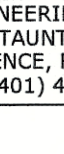


1. **ELECTRICIAN TO VERIFY ALL WORK SHOWN ON PLAN INCLUDING WIRE GAUGES, DROPS, ETC.**
2. **ELECTRICIAN TO VERIFY ADEQUATE POWER FOR NEW SERVICE AND EXISTING SERVICE.**
3. **ELECTRICIAN SHALL APPLY AND PAY FOR ALL PERMITS (ADA ONLY \$171,000.)**
4. **THIS SHALL BE A TURN KEY PROJECT WHERE ANY AND ALL MATERIALS, LABOR, EQUIPMENT SHALL BE INCLUDED IN THE BID PRICE.**
5. **ELECTRICIAN TO INCORPORATE AN ON/OFF SWITCH AND TIMER FOR LIGHTS ON OR NEAR PEDESTAL**

1862-2012		150 YEARS
CITY OF EAST PROVIDENCE DEPARTMENT OF PUBLIC WORKS ENGINEERING DIVISION 145 TAUNTON AVENUE EAST PROVIDENCE, RHODE ISLAND 02914 (401) 435-7703		
<div style="border: 1px solid black; height: 140px; width: 100%;"></div>		
Professional Engineer Stamp		
<div style="border: 1px solid black; height: 140px; width: 100%;"></div>		
Professional Land Surveyor Stamp		
Rhode Island State Law (Statute Chapter 39-1.2, Section 1) requires that Dig-Safe be notified 48 hours prior to any excavation. 1-888-DIG-SAFE / 1-888-344-7233 or 811 <u>EMERGENCY NUMBERS</u> Gas-National Grid (1-800-936-7000) Water-EPD/PW/Water Dept (435-7741) Sewer-Suez (433-6363)		

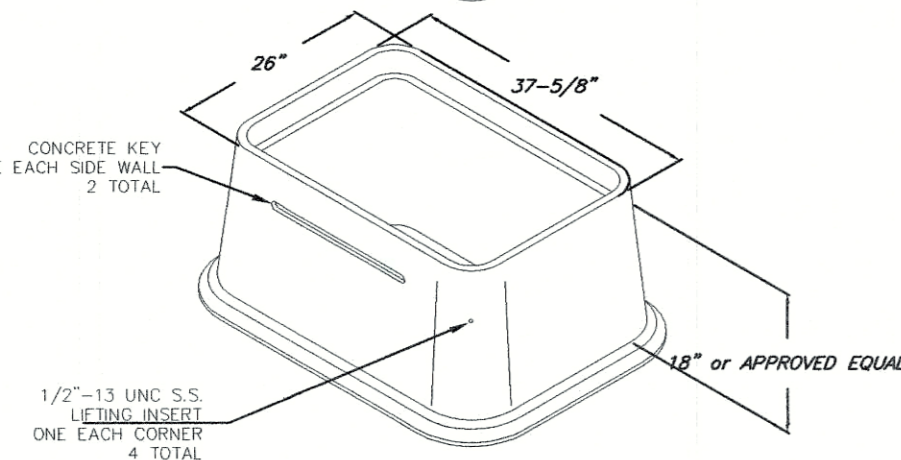
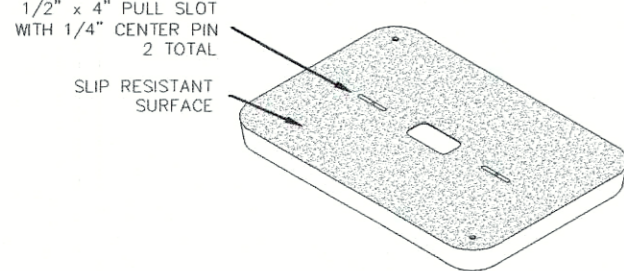
PROPOSED LIGHTING
at the Senior Center Complex
Map 406 Block 5 Parcel 1
Waterman Avenue
East Providence, Rhode Island

EX. COND. DRAWN BY:	EGIV
EX. COND. CHECKED BY:	EGS
DATE DRAWN:	12 JAN 2021
DESIGNED BY:	EGS
DESIGN DRAWN BY:	EGIV
DESIGN CHECKED BY:	EGS
APPROVED BY:	EGS
DATE SURVEYED:	11 JAN 2021
SURVEYED BY:	EGIV
SCALE:	1"=30'
FILENAME:	2021010

[illegible]

1
SHEET NUMBER 1 OF 1
PROJECT NUMBER 2021010

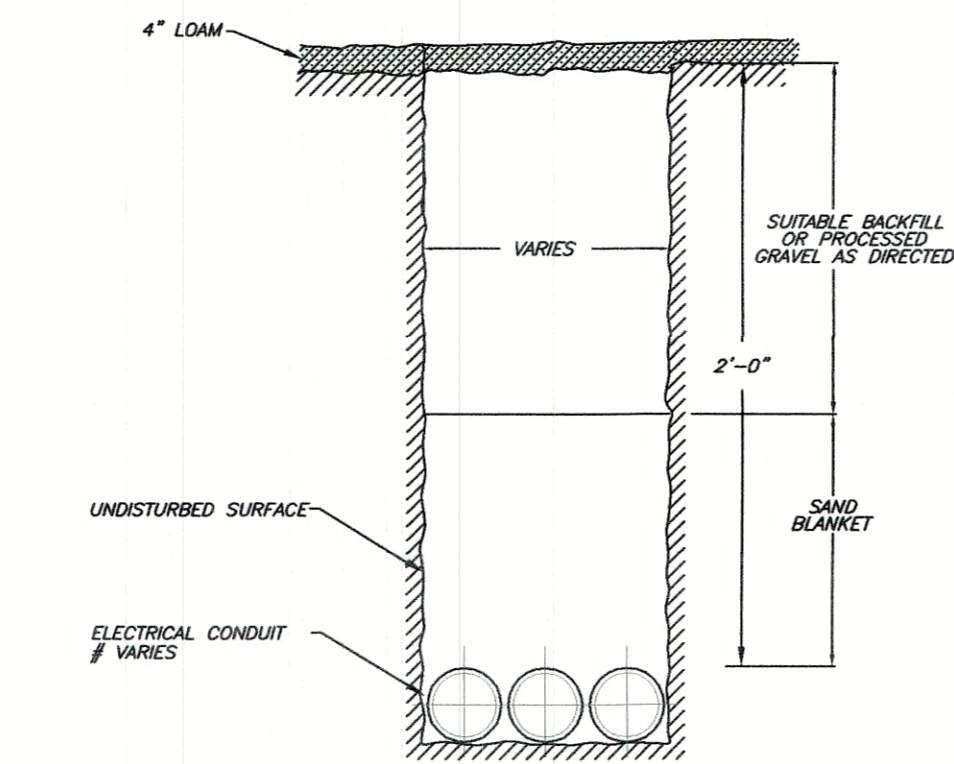
PG&E APPROVED. POLYMER CONCRETE FRAME AND NON-SKID COVER FOR STRENGTH. "FRP" FIBERGLASS REINFORCED BODY FOR LIGHT WEIGHT FLARED AT BASE TO PROVIDE ADDITIONAL WORK SPACE. MEETS ALL REQUIREMENTS OF W.U.C.



NOMINAL DIMENSIONS	PG&E CODE NO.	DESCRIPTION	APPROX. WT. LBS.
24"x36"x18"	04-0940	BOX AND COVER ASSEMBLY	258
24"x36"x18"	04-0930	BOX ONLY	158
24"x36"x4"	04-0118	4" EXTENSION	90
	04-3724	LID ONLY	100

DESIGN LOAD: STATIC DESIGN LOAD OF 8000 LBS.
OVER A 10" X 10" AREA.

FOR COMPLETE DESIGN AND PRODUCT INFORMATION
CONTACT JENSEN PRECAST.

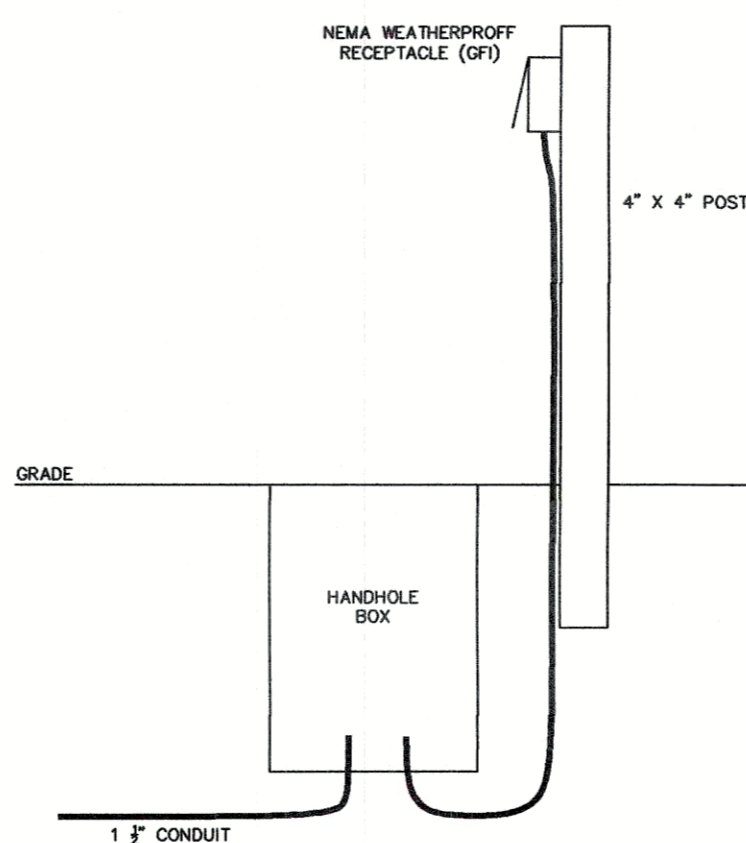


NOTE:
1. MINIMUM DEPTH OF COVER SHALL BE 2'-0"

REV. BY	DATE	REV. BY	DATE	DRAWN BY: E. GERMANI	DATE: 4/6/21
				APPROVED BY: ERIK G. SKADBERG, P.E.	DATE: 4/6/21
				CITY ENGINEER/DEPUTY D.P.W.	SCALE: N.T.S.



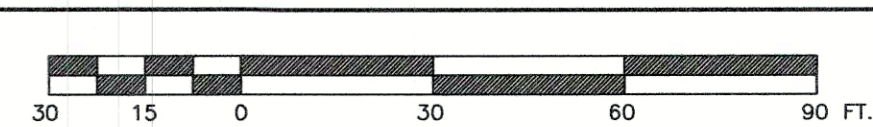
T-07

[illegible]

HORIZONTAL DATUM
RHODE ISLAND STATE PLANE COORDINATE (RISPC-NAD83)

VERTICAL DATUM
NORTH AMERICAN VERTICAL DATUM OF 1988 (NAVD88)

BENCHMARK
TOP OF RHODE ISLAND HIGHWAY BOUND APPROXIMATELY 50 FEET SOUTH OF
UTILITY POLE 151 ALONG PAWTUCKET AVENUE, OPPOSITE HIGH SCHOOL
STUDENT PARKING LOT ENTRANCE.
ELEVATION = 62.36



CITY OF EAST PROVIDENCE - DEPARTMENT OF PUBLIC WORKS - ENGINEERING DIVISION