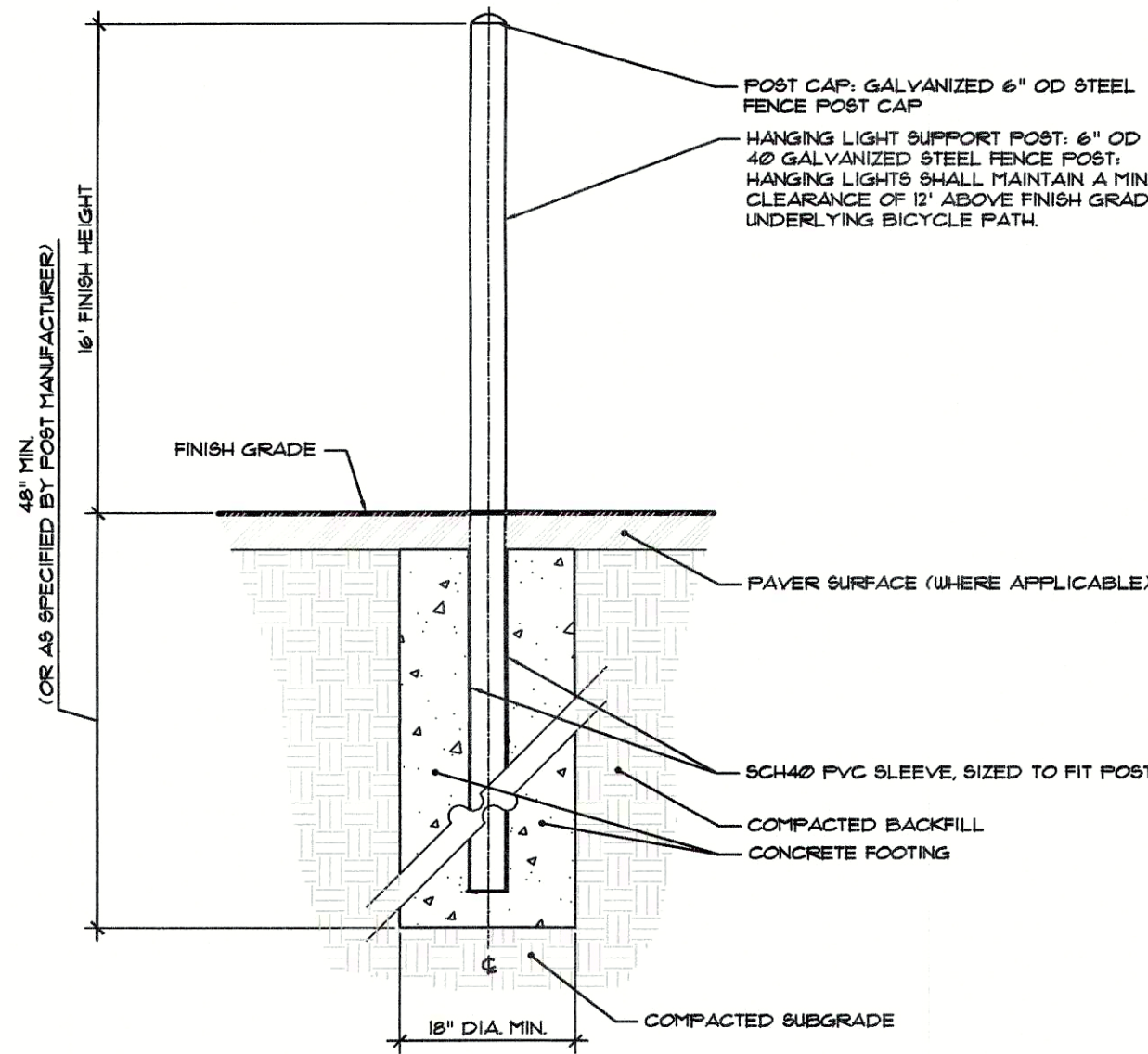


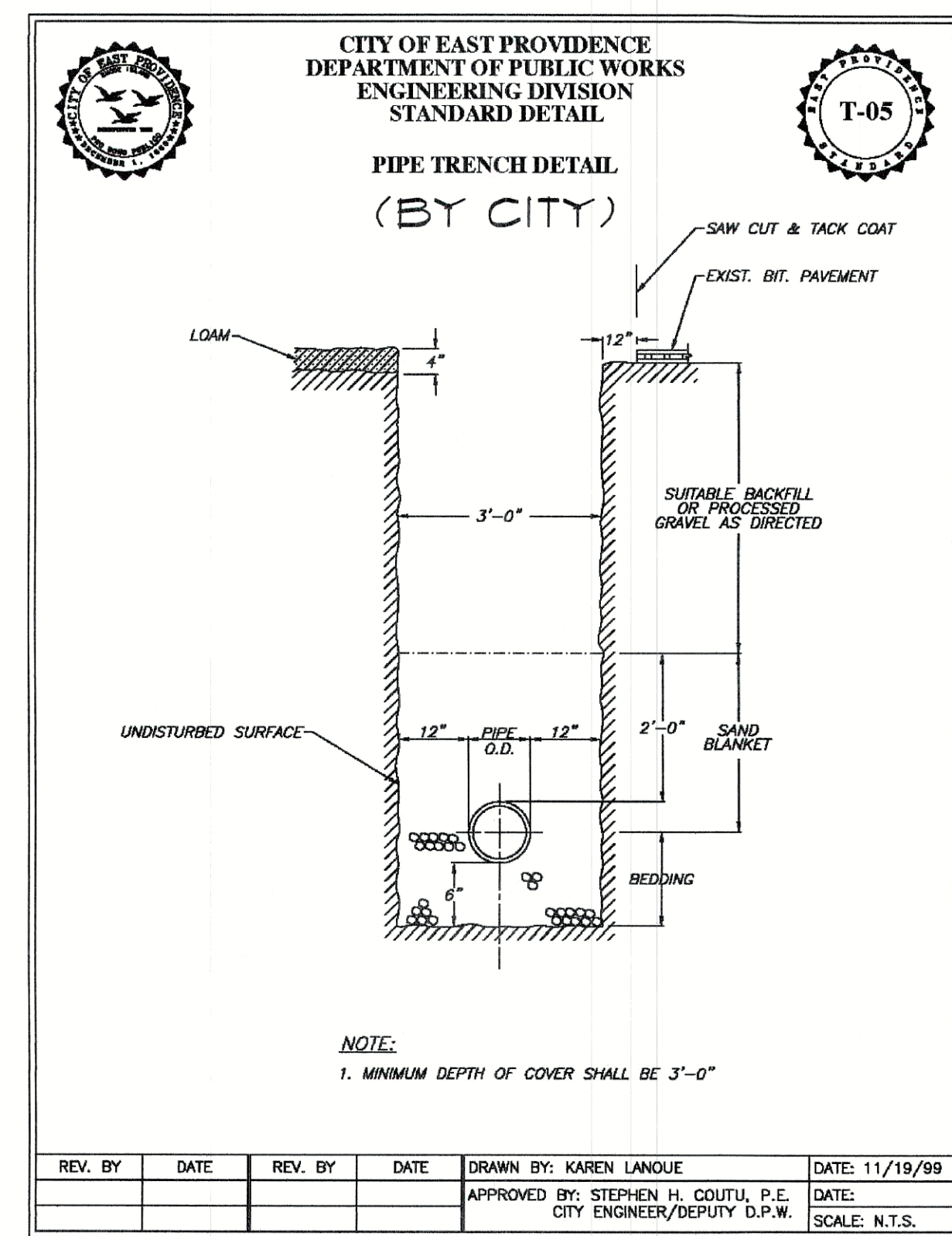
NOTES:

1. CONSTRUCTION SHALL BE IN ACCORDANCE WITH THE WATER QUALITY TREATMENT REQUIREMENTS OF STANDARD 3, OF THE RI STORMWATER DESIGN AND INSTALLATION STANDARDS MANUAL, PREPARED BY RIDEM AND RICHIC.
2. CONSTRUCTION SHALL BE IN ACCORDANCE WITH MANUFACTURER'S SPECIFICATIONS FOR PERMEABLE INTERLOCKING CONCRETE PAVERS.

1 PERVIOUS CONCRETE PAVER SURFACE NOT TO SCALE



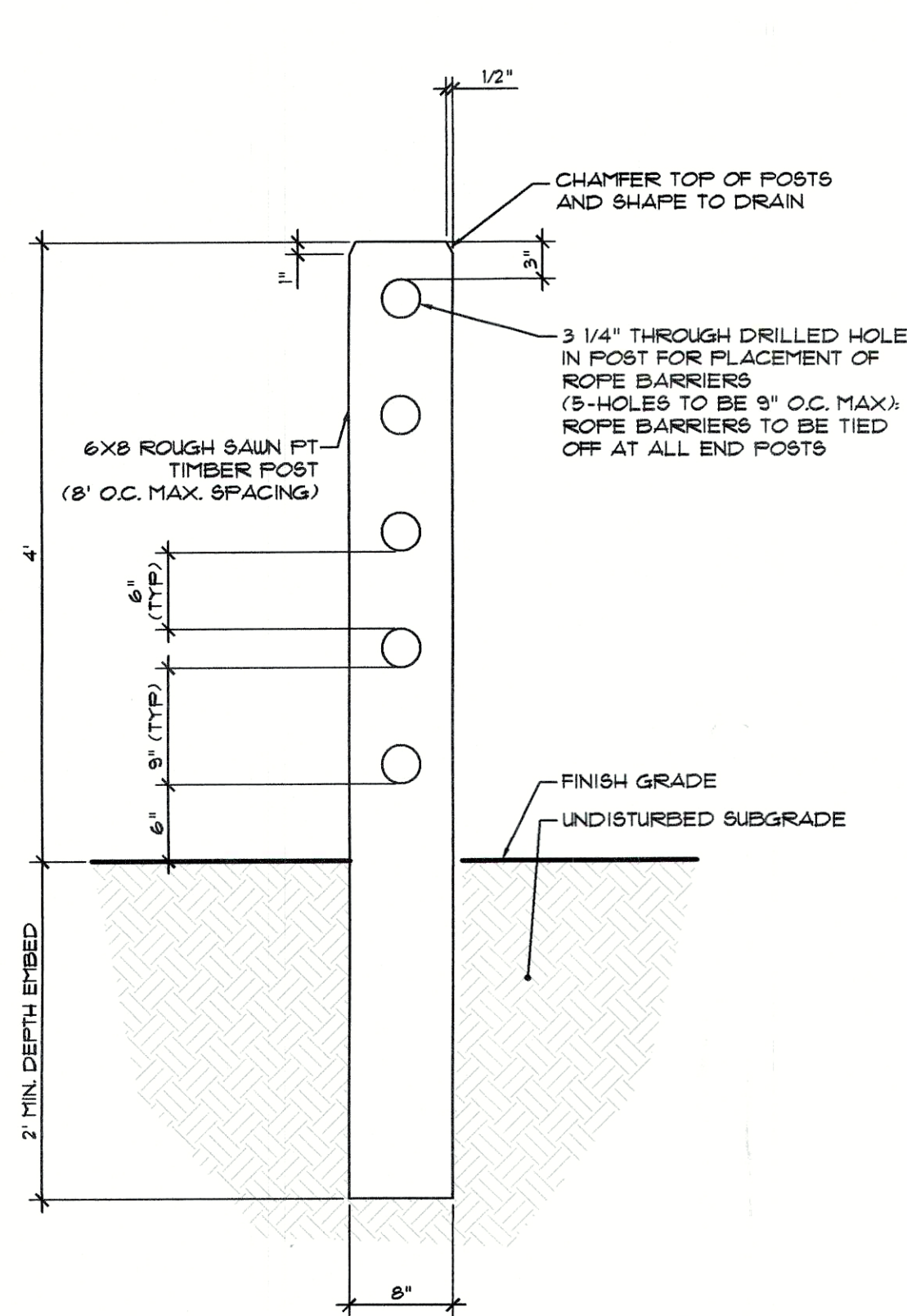
2 BICYCLE PATH HANGING LIGHT POST (BY CITY) NOT TO SCALE



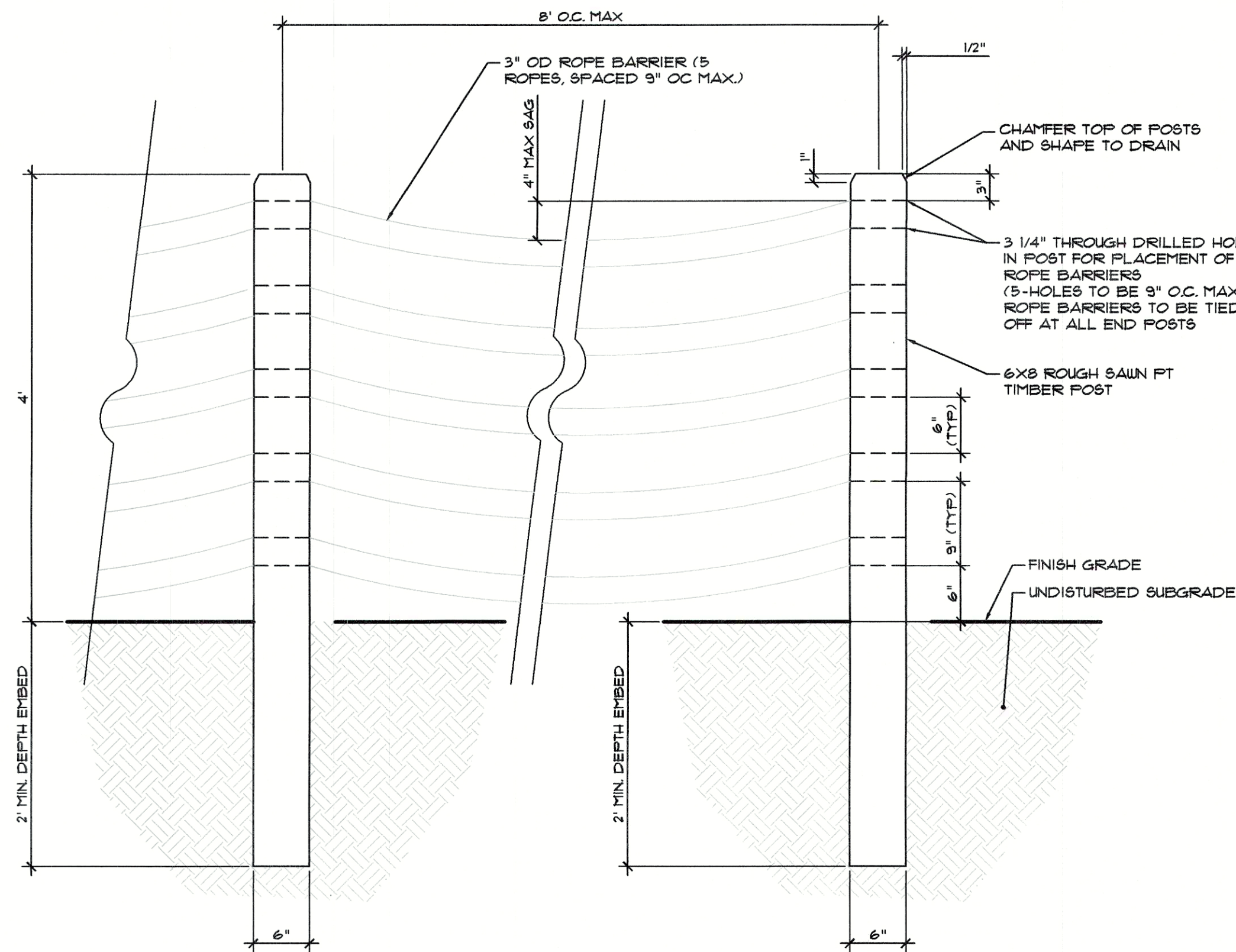
NOTE:

1. MINIMUM DEPTH OF COVER SHALL BE 3'-0"

REV. BY	DATE	REV. BY	DATE	DRAWN BY: KAREN LANQUE	DATE: 11/19/99
				APPROVED BY: STEPHEN H. COULT, P.E. CITY ENGINEER/DEPUTY D.P.W.	DATE: SCALE: N.T.S.



PROFILE VIEW

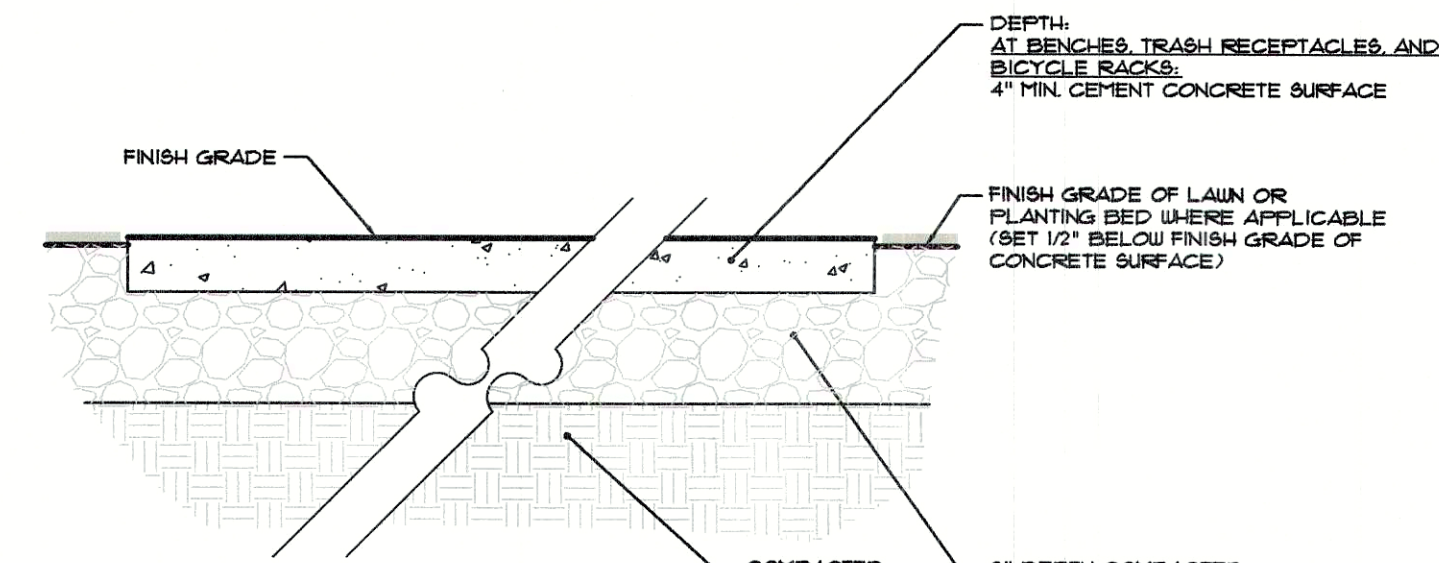


FRONT VIEW

NOTE:

1. ALL POSTS TO BE ROUGH SAWN 6 X 8 FT SOUTHERN YELLOW PINE W/ EASED EDGES
2. ALL ROPE TO BE 3\"/>

3 WOOD POST AND ROPE BARRIER (BY CITY) NOT TO SCALE



NOTE:

1. CONCRETE SURFACE SHALL BE IN ACCORDANCE WITH SECTION 909 OF THE RI STANDARD SPECIFICATIONS AND THE REQUIREMENTS OF THE CITY OF EAST PROVIDENCE HIGHWAY DEPARTMENT.
2. BENCHES, TRASH RECEPTACLES, AND BICYCLE RACKS SHALL BE SURFACE MOUNTED WITH TAMPER RESISTANT HARDWARE IN ACCORDANCE WITH THE BENCH, TRASH RECEPTACLE, AND BICYCLE RACK MANUFACTURER'S SPECIFICATIONS.

4 CONCRETE PAD SURFACE (BY CITY) NOT TO SCALE

REVISION HISTORY:

DATE	REVISION
4/8/20	February 6, 2020 RIDOT PAPA Review Comment Responses
5/28/20	May 22, 2020 RIDEM/RIDOT Comment Responses
8/28/20	July 29, 2020 Supplemental RIDEM Comments on Barrier Design
9/10/20	RIDEM Supplemental Comments: Additional Barrier Limits Notes
4/26/21	Addition Sculpture Details and Adjusted Locations

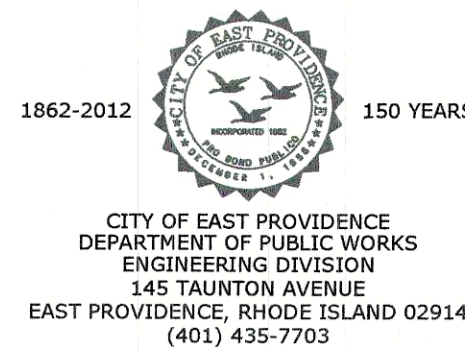
REFERENCES:

1. Plan Entitled, 'LIMITED TOPOGRAPHICAL SURVEY RIVERSIDE SQUARE IMPROVEMENTS', Sheet 1 of 1; Dated 7/19/19, w/Revisions through 3/6/20; Scale: 1\"/>

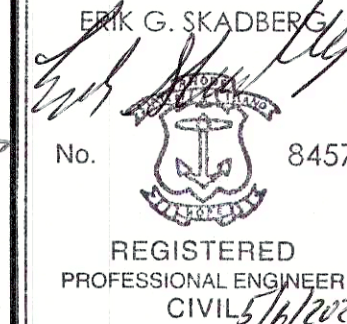
Riverside Square Improvements Project

Map 312, Block 9, Parcel 5  
Bullocks Point Avenue  
East Providence, RI

Prepared For:



Kevin M. Alverson  
LANDSCAPE ARCHITECTURE  
360 Annaquatucket Road  
Wickford, RI 02852  
401 338 0044  
KevinMAlversonLA.com



Details 1

Project #: 2.134.268

Sheet 5 of 7

Scale: As Shown

Drawn By: KMA

Checked By: KMA

Date: December 2, 2019

5