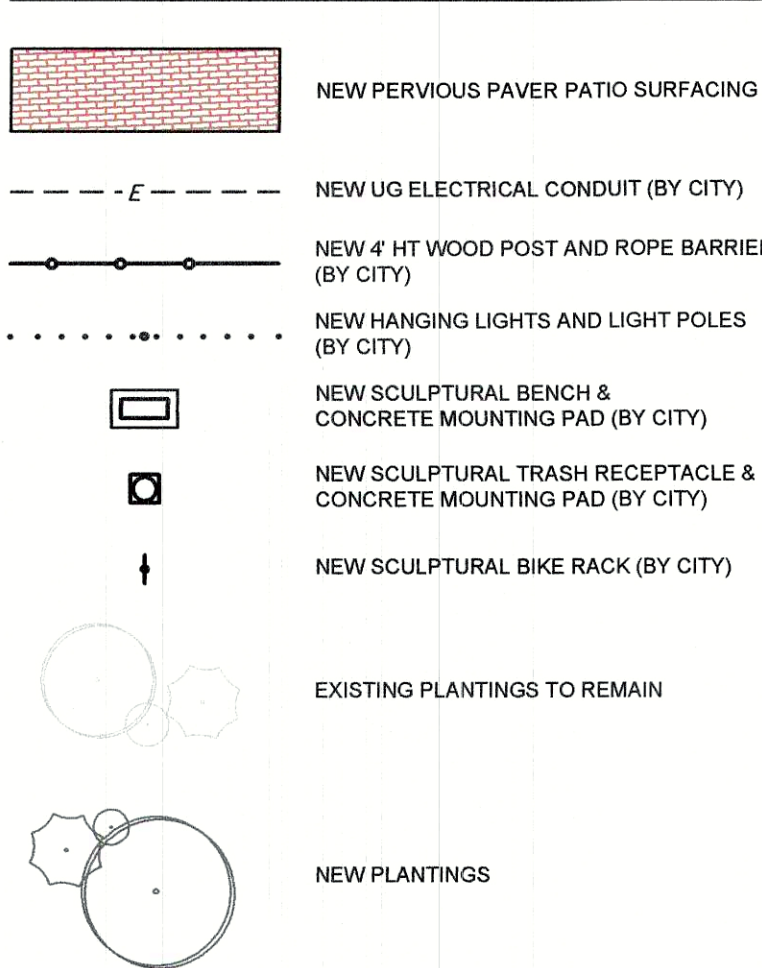


RI State Plane Coordinate
(Leica GS14 GNSS Rover)

PLANT SCHEDULE:

KEY	Scientific Name Common Name	QTY	Size Comment	Spacing
CA'H	Clethra alnifolia 'Hummingbird' Hummingbird Summersweet	21	#3 (3 Gal.) Container	As Shown
CC	Cercis canadensis Eastern Redbud	3	2.5"-3" Cal. B&B	As Shown
CS'AF	Cornus sericea 'Tarrow' ARCTIC FIRE Arctic Fire Compact Redtwig Dogwood	9	#3 (3 Gal.) Container	As Shown
HA'A	Hydrangea arborescens 'Abetwo' Incrediball White Mophead Hydrangea	27	#3 (3 Gal.) Container	As Shown
H'HR	Hemerocallis 'Happy Returns' Lemon Yellow Continuous Bloom Daylily	78	#1 (1 Gal.) Container	18" O.C.
IG'S	Ilex glabra 'Shamrock' Shamrock Compact Inkberry	39	#3 (3 Gal.) Container	As Shown
IV'RS	Ilex verticillata 'Nana' RED SPRITE Red Sprite Compact Winterberry	3	#3 (3 Gal.) Container	As Shown
JV'H	Juniperus virginiana 'Hillspire' Hillspire Easter Red Cedar	8	5'-6" B&B	As Shown
LT	Liriodendron tulipifera Tulip Tree	1	2"-2.5" Cal. B&B	As Shown
PV'N	Panicum virgatum 'Northwind' Northwind Upright Switchgrass	16	#1 (1 Gal.) Container	30" O.C.
RF'LG	Rudbeckia 'Little Goldstar' Compact Black-Eyed Susan	65	#1 (1 Gal.) Container	18" O.C.
SS'SO	Schizachyrium scoparium 'Standing Ovation' Standing Ovation Little Bluestem	26	#1 (1 Gal.) Container	30" O.C.

LEGEND



LANDSCAPE NOTES:

- THE CONTRACTOR SHALL INSTALL ALL PLANT MATERIAL AND LOAM AND SEED IN CONFORMANCE WITH THE RHODE ISLAND DEPARTMENT OF TRANSPORTATION STANDARD SPECIFICATIONS FOR ROAD AND BRIDGE CONSTRUCTION, LATEST EDITION, AND THE CURRENT PLANTING PROCEDURES ESTABLISHED BY THE AMERICAN NURSERY & LANDSCAPE ASSOCIATION, FORMERLY THE AMERICAN ASSOCIATION OF NURSERYMEN, STANDARDS FOR NURSERY STOCK, LATEST EDITION, AND ITS AMENDMENTS. PLANT ONLY DURING SEASONS NORMAL TO THE PARTICULAR VARIETY.
- ALL PLANT MATERIAL SHALL MEET THE AMERICAN NURSERY & LANDSCAPE ASSOCIATION, FORMERLY THE AMERICAN ASSOCIATION OF NURSERYMEN, STANDARDS FOR NURSERY STOCK, LATEST EDITION, AND ITS AMENDMENTS. PLANT ONLY DURING SEASONS NORMAL TO THE PARTICULAR VARIETY.
- THE CONTRACTOR SHALL PERFORM ALL WORK IN ACCORDANCE WITH ALL LOCAL, STATE, AND FEDERAL REGULATIONS, AND SHALL OBTAIN ALL NECESSARY PERMITS FOR THE PROJECT.
- THE CONTRACTOR IS RESPONSIBLE FOR KEEPING THE SITE CLEAR OF MISCELLANEOUS DEBRIS THROUGHOUT THE CONSTRUCTION PERIOD. ALL WASTE MATERIAL IS TO BE LEGALLY DISPOSED OF IMMEDIATELY TO AN OFF-SITE LOCATION, UNLESS OTHERWISE INDICATED ON THE PLANS.
- PROTECTION OF EXISTING PLANTINGS: PROTECT TREES OR OTHER PLANT SPECIMENS WHICH ARE OUTSIDE OF THE PROPOSED LIMIT OF DISTURBANCE. PROTECTIVE BARRIERS ARE TO BE INSTALLED, WHEN NECESSARY, AROUND EACH PLANT AND/OR GROUP OF PLANTS THAT ARE TO REMAIN ON THE SITE. BARRIERS SHALL NOT BE SUPPORTED BY THE PLANTS THEY ARE PROTECTING, BUT SHALL BE SELF-SUPPORTING. THEY SHALL BE A MINIMUM OF FOUR FEET (4') HIGH AND CONSTRUCTED OF A DURABLE MATERIAL, SUCH AS SNOW OR SILT FENCE, THAT WILL LAST UNTIL CONSTRUCTION IS COMPLETED.
- ANY ACCIDENTALLY DAMAGED ROOTS SHALL BE PRUNED BY A LICENSED ARBORIST
- ANY ACCIDENTAL DISTRIBUTION OF NON-VEGETATIVE DEBRIS, LIQUID, OR REFUSE WITHIN OR AROUND THE ROOT PROTECTION ZONE OF VEGETATION TO REMAIN SHALL BE IMMEDIATELY CLEANED AND REMOVED FROM SITE LEGALLY AND IN ACCORDANCE WITH ALL LOCAL, STATE, AND FEDERAL REGULATIONS TO PREVENT CHANGES TO THE SOIL STRUCTURE OR NATURAL ENVIRONMENT OF PROTECTED VEGETATION.
- ALL PLANTINGS SHALL BE SIZED IN ACCORDANCE WITH THE SIZES INDICATED ON THE PLANT SCHEDULE, UNLESS OTHERWISE APPROVED BY CITY'S REPRESENTATIVE. SPECIFIED PLANT VARIETIES, QUANTITIES, AND SIZES ARE SUBJECT TO AVAILABILITY AT TIME OF ORDERING AND INSTALLATION. ALL PLANT SUBSTITUTIONS AND/OR CHANGES IN PLANT LOCATION OR SIZE MUST BE APPROVED BY THE CITY'S REPRESENTATIVE.
- MAINTENANCE AND WARRANTY:
 - ALL PLANTINGS SHALL BE MAINTAINED BY THE CITY FROM THE TIME OF PLANTING UNTIL THE PLANTINGS ARE ESTABLISHED. MAINTENANCE DURING THIS PERIOD SHALL INCLUDE WATERING OF TREES AS NECESSARY TO ENSURE PROPER ESTABLISHMENT OF PLANTINGS.
 - CONTRACTOR SHALL PROVIDE A ONE (1) YEAR WARRANTY ON ALL NEW PLANTINGS. SHOULD NEW PLANT MATERIAL DIE (OR DECLINE TO THE POINT WHERE PLANT IS EXPECTED TO DIE) WITHIN THIS WARRANTY PERIOD (OTHER THAN DUE TO NATURAL FACTORS, NATURAL DISASTER, OR NEGLIGENCE), CONTRACTOR SHALL REMOVE THE PLANT AND REPLACE SAID PLANT MATERIAL WITH NEW PLANTINGS IN ACCORDANCE WITH THE SIZE AND VARIETY SPECIFIED. ALL REPLACEMENT PLANT MATERIAL SHALL CARRY A NEW ONE (1) YEAR WARRANTY STARTING FROM THE DATE OF REPLACEMENT.
- FINAL LOCATIONS OF ALL NEW PLANTINGS SHALL BE ADJUSTED AS NECESSARY BASED ON FINAL AS-BUILT LOCATIONS OF ALL NEW AND EXISTING UTILITIES AND OTHER SITE IMPROVEMENTS.
- ON-SITE TOPSOIL: NO REMOVAL OF TOPSOIL OR UNNECESSARY GRADING/DISTURBANCE OF THE SITE SHALL OCCUR DURING CONSTRUCTION UNLESS NECESSARY FOR SUCCESSFUL IMPLEMENTATION OF IMPROVEMENTS. TOPSOIL THAT MUST BE MOVED DURING CONSTRUCTION PROCEDURES AND/OR GRADING NECESSARY FOR CONSTRUCTION, SHALL BE REMOVED AND STOCKPILED ON-SITE FOR RE-USE. DO NOT MIX TOPSOIL WITH SUBSOIL. PROTECT ALL STOCKPILES FROM EROSION AND SEDIMENTATION WITH APPROPRIATE SOIL EROSION AND SEDIMENTATION CONTROLS IN CONFORMANCE WITH THE ENGINEER'S PLANS (SEE REFERENCES).
- PLANTABLE SOIL: ALL LOAM USED AS PLANTABLE SOIL SHALL HAVE A SANDY LOAM TEXTURE RELATIVELY FREE OF SUBSOIL MATERIAL, STONES, ROOTS, LUMPS OF SOIL, TREE LIMBS, TRASH, CONSTRUCTION DEBRIS, OR OTHER OBJECTIONABLE MATERIAL. NEW PLANTING BEDS SHALL BE AMENDED WITH WELL-AGED COMPOST. LOAM SHALL BE AMENDED WITH COMPOST AS NEEDED TO PRODUCE A PLANTABLE SOIL CONTAINING A MINIMUM OF 30% ORGANIC MATTER. ON-SITE NATIVE LOAM MAY BE UTILIZED FOR PLANTABLE SOIL, BUT SHALL BE AMENDED, SCREENED, AND/OR RAKED AS NECESSARY TO CONFORM TO THE REQUIREMENTS OF ANY OFF-SITE LOAM.
- COMPOST SHALL BE A WELL DECOMPOSED, STABLE, WEED FREE ORGANIC MATTER SOURCE. IT SHALL BE DERIVED FROM AGRICULTURAL, FOOD, AND/OR YARD TRIMMINGS. THE PRODUCT SHALL CONTAIN NO SUBSTANCES TOXIC TO PLANTS AND SHALL BE REASONABLY FREE (LESS THAN 1 PERCENT BY DRY WEIGHT) OF MAN-MADE FOREIGN MATTER.
- THOROUGHLY WATER ALL PLANTS WHEN 2/3 OF BACKFILL HAS BEEN PLACED TO ENSURE ALL AIR POCKETS ARE REMOVED. FIRMLY TAMP SOIL AROUND PLANT. ENSURE PROPER WATERING OF PLANT MATERIAL UNTIL ESTABLISHMENT.
- PRUNING: ALL PLANTING MATERIAL SHALL BE PRUNED IN ACCORDANCE WITH GOOD HORTICULTURAL PRACTICES, AND IN SUCH A MANNER AS TO MAINTAIN THE NATURAL FORM OF THE PLANT. PRUNING SHALL BE COMPLETED UTILIZING ONLY CLEAN SHARP TOOLS. USE OF AXES FOR PRUNING IS UNACCEPTABLE.
- PRUNE ALL PLANT MATERIAL TO REMOVE ANY AND ALL DEADWOOD.
- MULCH: ALL PLANTINGS SHALL BE MULCHED AS INDICATED ON DRAWINGS. PLANTINGS INSTALLED IN CLUSTERS, OR WITHIN PLANTING BEDS SHALL BE MULCHED AS SUCH, INSTALLING MULCH THROUGHOUT THE ENTIRE PLANTING BED. MULCH TO BE 3"-4", OR AS OTHERWISE NOTED, IN DEPTH AND REDUCED TO LESS THAN 1" AT ROOT FLARE OF EACH PLANT.
- MULCH SHALL BE WELL-AGED, SHREDED PINE BARK MULCH, NATURAL DARK BROWN IN COLOR AND NON-DYED.
- LOAM AND SEED:
 - LOAM AND SEED ALL DISTURBED AREAS. ALL NEW LAWN AREAS SUBJECT TO EROSION SHALL BE STABILIZED UTILIZING JUTE MESH OR APPROVED EQUAL.
 - LOAM UTILIZED OR RETAINED FOR LAWN AREAS SHALL BE SANDY LOAM, CONTAINING A MINIMUM OF 5% ORGANIC MATTER, 6" IN DEPTH, AND CONFORMING TO THE REQUIREMENTS OF THE USDA FOR LAWN PLANTINGS. ON-SITE NATIVE LOAM MAY BE UTILIZED FOR LAWN AREAS, BUT SHALL BE AMENDED, SCREENED, AND/OR RAKED AS NECESSARY TO CONFORM TO THE REQUIREMENTS OF ANY OFF-SITE LOAM.
 - IF INSTALLING SEED UTILIZING HYDROSEEDER DEVICE, PROVIDE FIBER MULCH AND FERTILIZER MIX.
 - IF BROADCAST SEEDING, TOPDRESS WITH 2" STRAW MULCH, FOLLOWING SPREADING OF SEED.
- SEED MIXES:
 - SEED MIX UTILIZED FOR LAWN AREAS SHALL BE SIMILAR TO 'Endophyte Enhanced Mix' AS AVAILABLE THROUGH ALLEN'S SEED, EXETER, RI, OR EQUAL, DROUGHT TOLERANT, DEEP-ROOTING GRASS SEED, CONTAINING A MINIMUM OF 30% BY WEIGHT OF TURF-TALL FESCUE
 - POLLINATOR HABITAT MEADOWS: AREAS TO BE DELINEATED BY WEATHER RESILIENT MARKERS 40" O.C., AND MOWED AS OUTLINED IN VEGETATION MANAGEMENT PLAN. SEED MIX TO BE SIMILAR TO 'Showy Northeast Native Wildflower and Grass Mix', AS AVAILABLE THROUGH ERNST SEED COMPANY, OR APPROVED EQUAL. INSTALL SEED AT RATES IN ACCORDANCE WITH SEED SUPPLIER'S RECOMMENDATIONS. SEED MIXTURE SHALL GENERALLY CONFORM TO THE FOLLOWING GUIDELINES:

Mix Composition
39.5% Schizachyrium scoparium, Fort Indiantown Gap-PA Ecotype (Little Bluestem, Fort Indiantown Gap-PA Ecotype)
23.1% Bouteloua curtipendula, 'Stair' (Sidebloss Grass, 'Butter')
14.0% Elymus virginicus, PA Ecotype (Virginia Wildrye, PA Ecotype)
3.9% Echinochloa purpurea (Purple Coneflower)
3.0% Chamaecrista fasciculata, PA Ecotype (Partridge Pea, PA Ecotype)
3.0% Careopsis lanceolata (Lanceleaf Coreopsis)
3.0% Rudbeckia hirta (Black-eyed Susan)
2.5% Asclepias tuberosa, PA Ecotype (Butterfly Milkweed, PA Ecotype)
2.5% Liatris spicata (Marsh (Dense) Blazing Star (Spiked Gayfeather))
2.0% Helianthus scaberrimus, PA Ecotype (Dwarf Sunflower, PA Ecotype)
1.0% Zizia aurea (Golden Alexander)
0.5% Aster laevis, PA Ecotype (Lowrie's Blue Wood Aster, PA Ecotype)
0.5% Rudbeckia fulgida var. 'Goldglow', Northern VA Ecotype (Orange Coneflower, Northern VA Ecotype)
0.5% Solidago juncea, PA Ecotype (Early Goldenrod, PA Ecotype)
0.4% Aster novae-angliae (Syrphothrix n. l.) PA Ecotype (New England Aster, PA Ecotype)
0.2% Aster perennifolius, PA Ecotype (Spotted Aster, PA Ecotype)
0.2% Solidago bicolor, PA Ecotype (White (Silver Rod) Goldenrod, PA Ecotype)
0.1% Penstemon hirsutus (Hairy Beardtongue)
0.1% Senecio maritima (Maryland Senecio)

REVISION HISTORY:

DATE	REVISION
4/8/20	February 6, 2020 RIDOT PAPA Review Comment Responses
5/28/20	May 22, 2020 RIDOT/RIDOT Comment Responses
8/28/20	July 29, 2020 Supplemental RIDOT Comments on Barrier Design
9/10/20	RIDOT Supplemental Comments: Additional Barrier Limits Notes
4/26/21	Addition Sculpture Details and Adjusted Locations

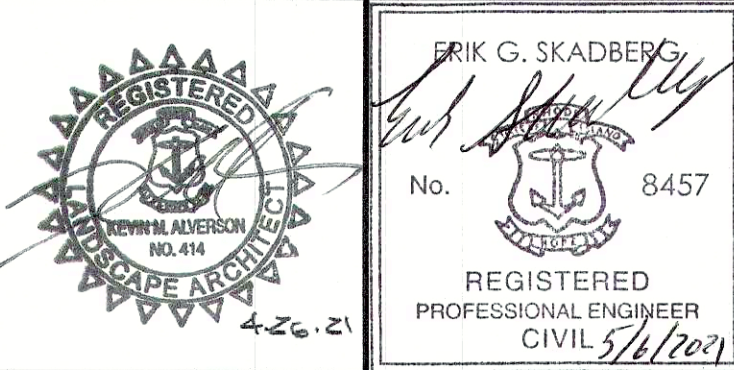
REFERENCES:

- Plan Entitled, 'LIMITED TOPOGRAPHICAL SURVEY RIVERSIDE SQUARE IMPROVEMENTS', Sheet 1 of 1, Dated 7/19/19, w/Revisions through 3/6/20; Scale: 1"=20', as Prepared by CITY OF EAST PROVIDENCE - DEPARTMENT OF PUBLIC WORKS - ENGINEERING DIVISION

Riverside Square Improvements Project

Map 312, Block 9, Parcel 5
Bullocks Point Avenue
East Providence, RI

Prepared For:



Landscape Plan

Project #: 2.134.268

Sheet 4 of 7

Scale: As Shown

Drawn By: KMA

Checked By: KMA

Date: April 8, 2020

4

