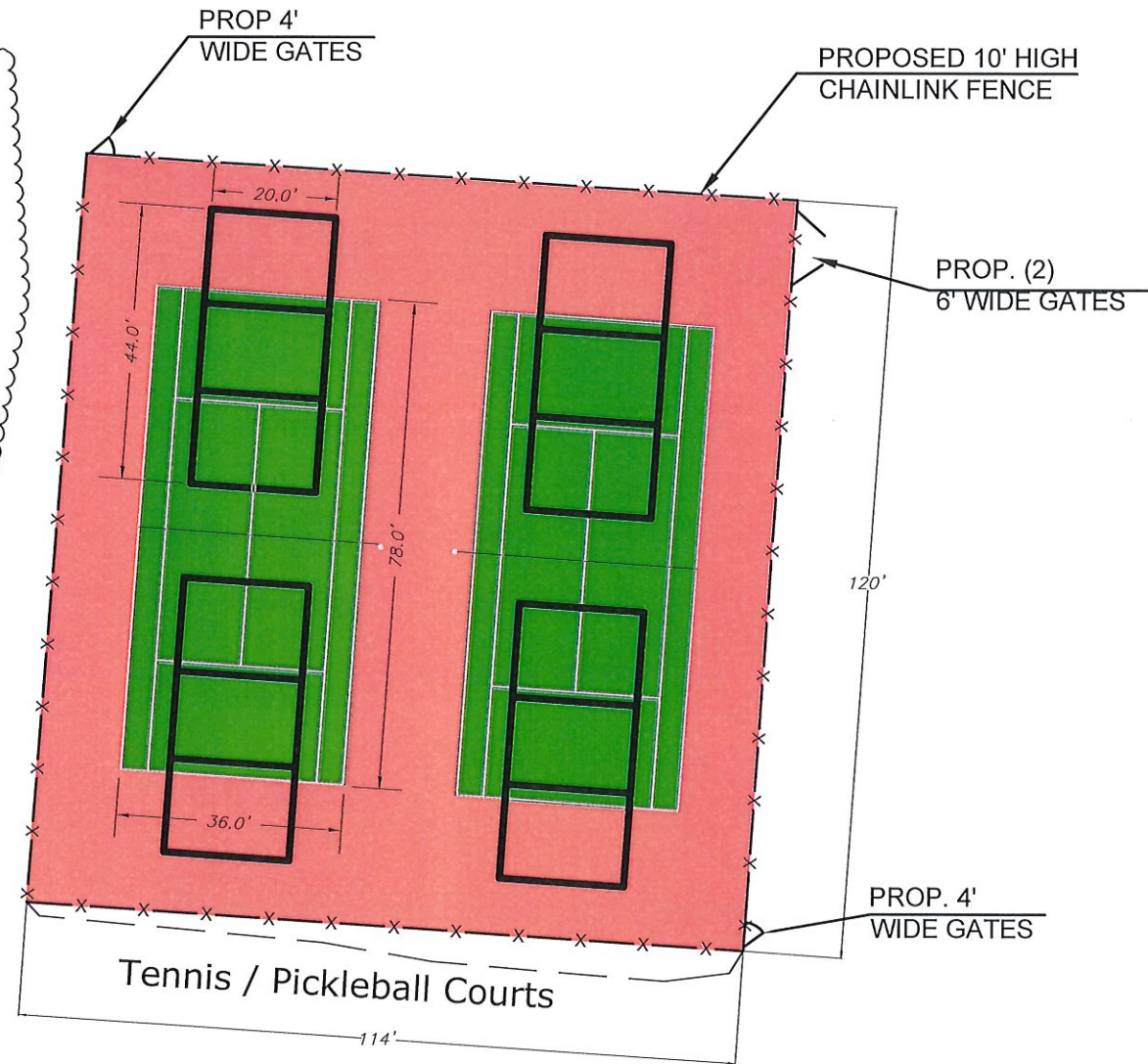
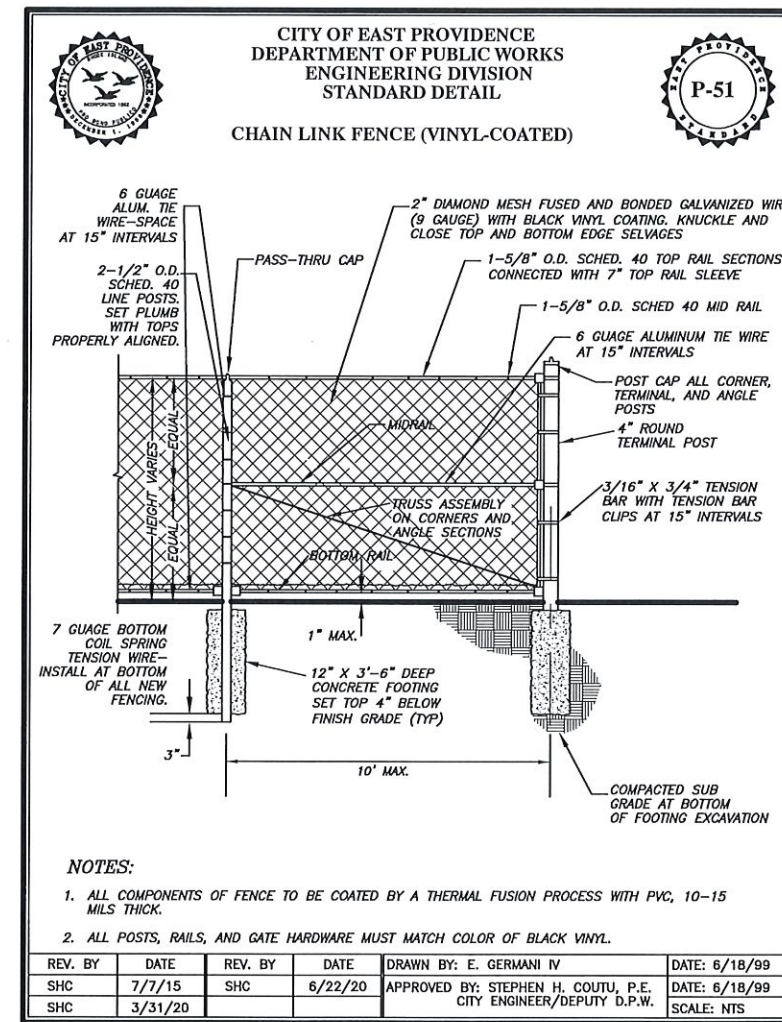


LOCUS MAP
NOT TO SCALE



Tennis / Pickleball Courts



1862-2012 150 YEARS

CITY OF EAST PROVIDENCE
DEPARTMENT OF PUBLIC WORKS
ENGINEERING DIVISION
145 TAUNTON AVENUE
EAST PROVIDENCE, RHODE ISLAND 02914
(401) 435-7703

Professional Engineer Stamp

Professional Land Surveyor Stamp

Rhode Island State Law
(Statute Chapter 39-1.2, Section 1)
requires that Dig-Safe shall be notified
48 hours prior to any excavation.
1-888-DIG-SAFE / 1-888-344-7333 or 811
EMERGENCY NUMBERS:
Gas-National Grid (1-800-936-7000)
Water-EPDPW/Water Dept (435-7741)
Sewer-Suez (433-6363)

TENNIS/PICKLEBALL COURT
GRASSY PLAINS PARK
Map 511 Block 2 Parcel 1
Estrell Drive
East Providence, Rhode Island

EX. COND. DRAWN BY:	EGV
EX. COND. CHECKED BY:	NYR
DATE DRAWN:	xx OCT 2020
DESIGNED BY:	N/A
DESIGN DRAWN BY:	N/A
DESIGN CHECKED BY:	N/A
APPROVED BY:	EGS
DATE SURVEYED:	xx OCT 2020
SURVEYED BY:	EGV
SCALE:	1"=40'
FILENAME:	2020242

#	Date	Revision	By
1	2/26/21	PROP FENCE	KL

3

SHEET NUMBER 1 OF 1
PROJECT NUMBER 2020242

CITY OF EAST PROVIDENCE - DEPARTMENT OF PUBLIC WORKS - ENGINEERING DIVISION