

In this 3D model, facets appear as semi-transparent to reveal overhangs.

TABLE OF CONTENTS

- Images 1
- Length Diagram 4
- Pitch Diagram 5
- Area Diagram 6
- Notes Diagram 7
- Penetrations Diagram 8
- Report Summary 9

MEASUREMENTS

- Total Roof Area = 35,615 sq ft
- Total Roof Facets = 44
- Predominant Pitch = 0/12
- Number of Stories > 1
- Total Ridges/Hips = 489 ft
- Total Valleys = 298 ft
- Total Rakes = 161 ft
- Total Eaves = 682 ft
- Total Penetrations = 57
- Total Penetrations Perimeter = 404 ft
- Total Penetrations Area = 311 sq ft

Measurements provided by www.eagleview.com



Certified Accurate

www.eagleview.com/Guarantee.aspx

IMAGES

The following aerial images show different angles of this structure for your reference.

Top View

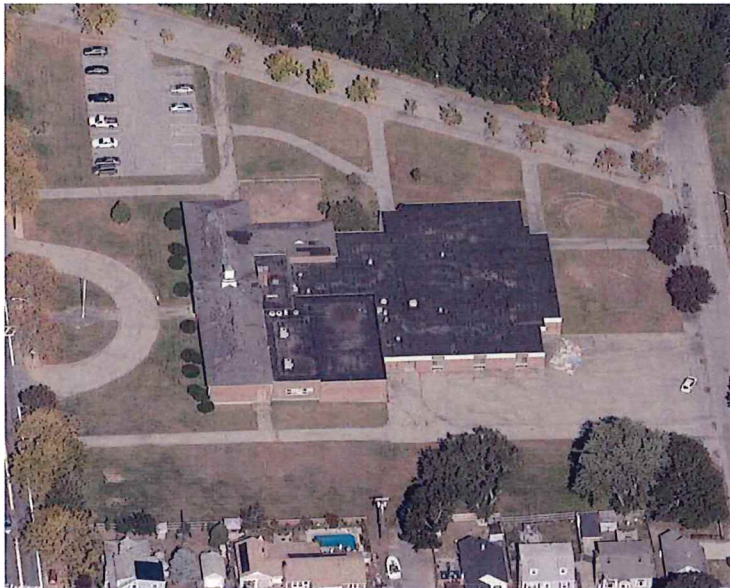


IMAGES

North Side



South Side



IMAGES

East Side

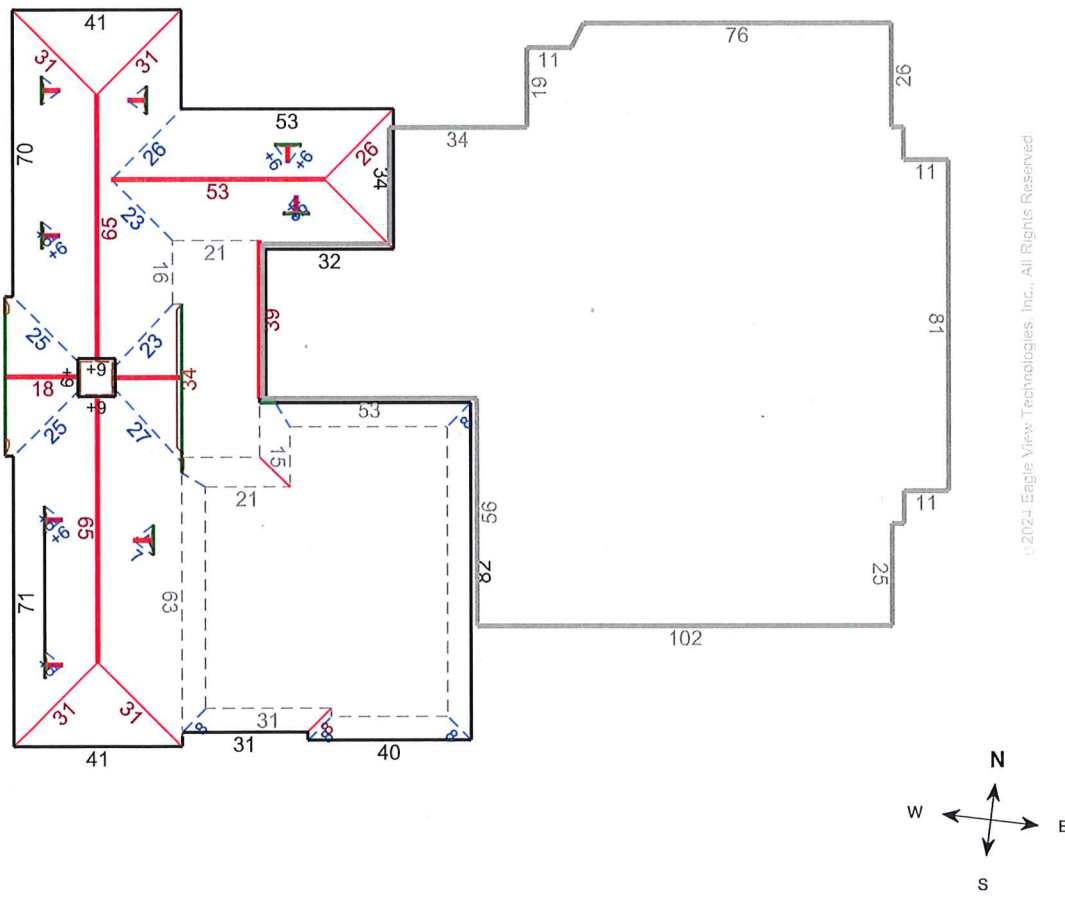


West Side



LENGTH DIAGRAM

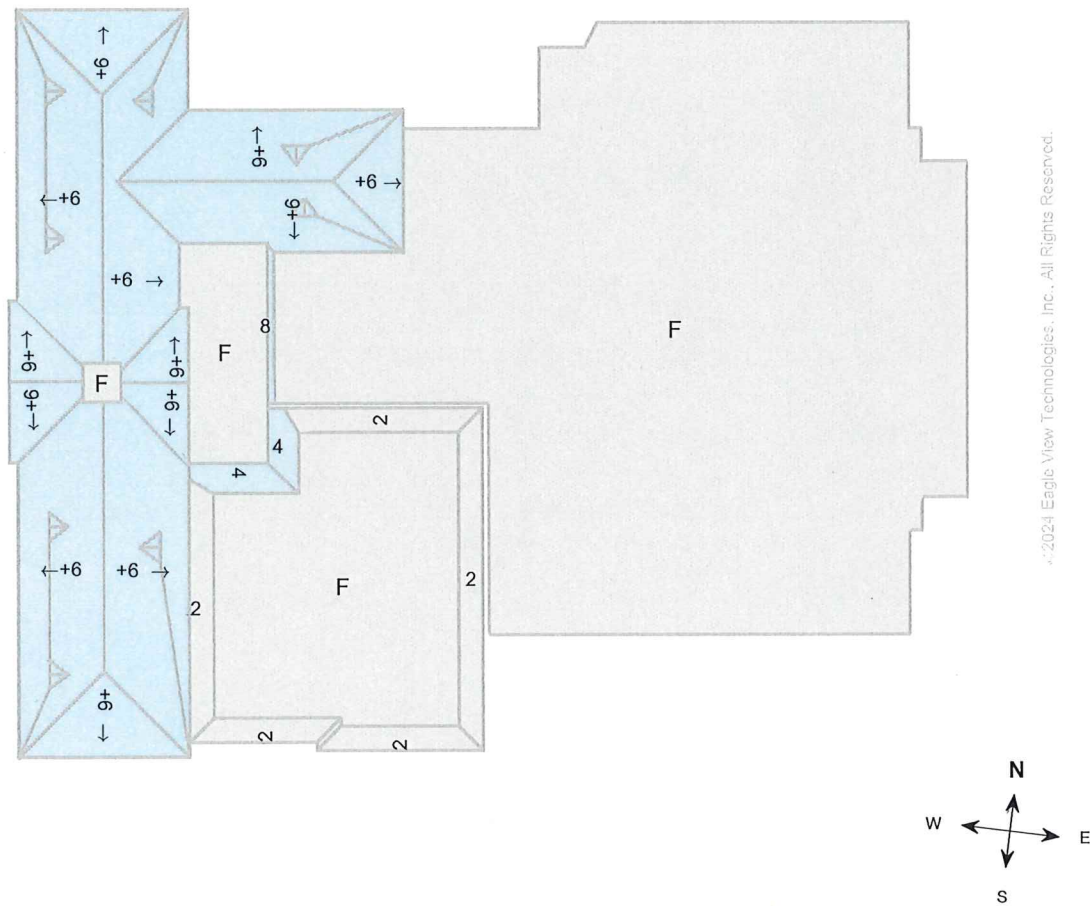
Total Line Lengths: Ridges = 294 ft Hips = 195 ft	Valleys = 298 ft Rakes = 161 ft Eaves = 682 ft	Flashing = 81 ft Step flashing = 75 ft Parapets = 631 ft
--	--	--



Note: This diagram contains segment lengths (rounded to the nearest whole number) over 5.0 Feet. In some cases, segment labels have been removed for readability. Plus signs preface some numbers to avoid confusion when rotated (e.g. +6 and +9).

PITCH DIAGRAM

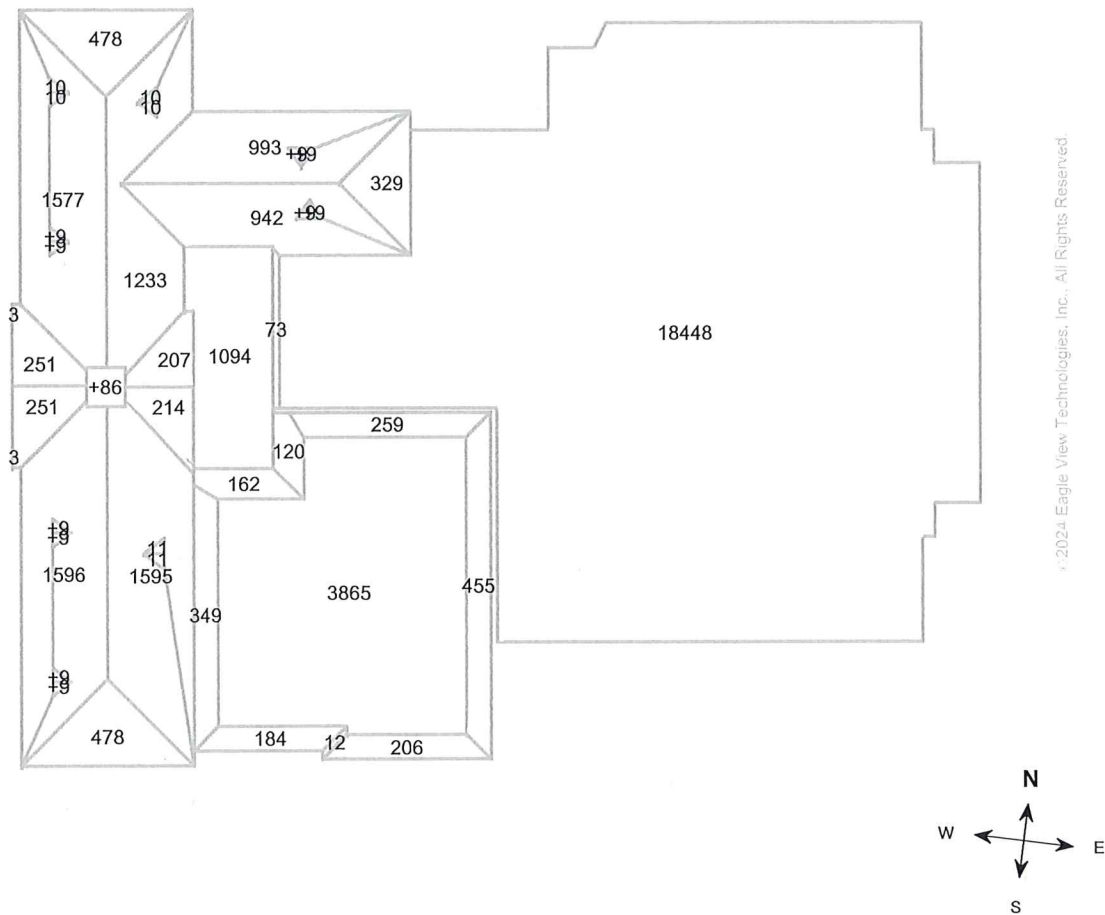
Pitch values are shown in inches per foot, and arrows indicate slope direction. The predominant pitch on this roof is 0/12



Note: This diagram contains labeled pitches for facet areas larger than 20.0 square feet. In some cases, pitch labels have been removed for readability. Blue shading indicates a pitch of 3/12 and greater. Gray shading indicates flat, 1/12 or 2/12 pitches. If present, a value of "F" indicates a flat facet (no pitch).

AREA DIAGRAM

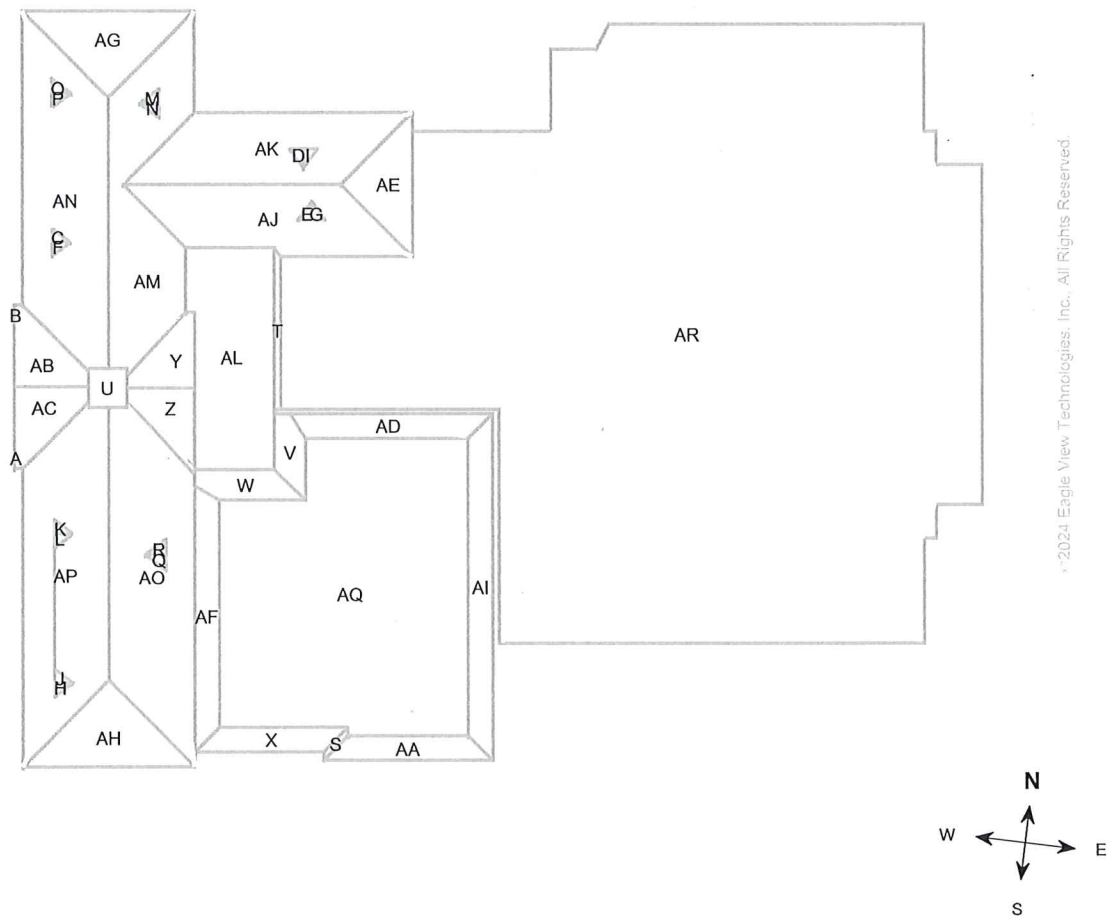
Total Area = 35,615 sq ft, with 44 facets.



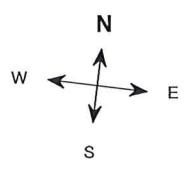
Note: This diagram shows the square feet of each roof facet (rounded to the nearest Foot). The total area in square feet, at the top of this page, is based on the non-rounded values of each roof facet (rounded to the nearest square foot after being totaled).

NOTES DIAGRAM

Roof facets are labeled from smallest to largest (A to Z) for easy reference.



© 2024 Eagle View Technologies, Inc. All Rights Reserved.



PENETRATIONS NOTES DIAGRAM

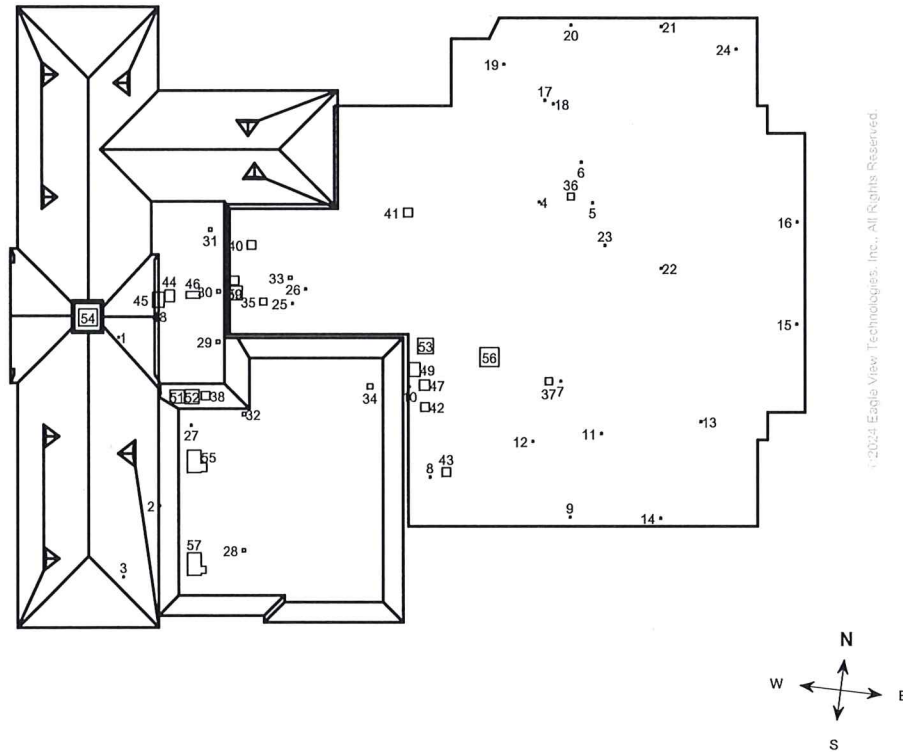
Penetrations are labeled from smallest to largest for easy reference.

Total Penetrations = 57

Total Penetrations Area = 311 sq ft

Total Penetrations Perimeter = 404 ft

Total Roof Area Less Penetrations = 35,304 sq ft



REPORT SUMMARY

All Structures

Areas per Pitch					
Roof Pitches	0/12	2/12	4/12	6/12	8/12
Area (sq ft)	23493.1	1464.1	281.7	10150.0	225.4
% of Roof	66%	4.1%	0.8%	28.5%	0.6%

The table above lists each pitch on this roof and the total area and percent (both rounded) of the roof with that pitch.

Structure Complexity		
Simple	Normal	Complex

Waste Calculation										
NOTE: This waste calculation table is for asphalt shingle roofing applications. All values in table below only include roof areas of 3/12 pitch or greater. For total measurements of all pitches, please refer to the Lengths, Areas, and Pitches section below.										
Waste %	0%	1%	6%	9%	11%	13%	16%	21%	26%	
Area (Sq ft)	10658	10765	11298	11618	11831	12044	12364	12897	13430	
Squares *	106.66	107.66	113.00	116.33	118.33	120.66	123.66	129.00	134.33	
	Measured				Suggested					

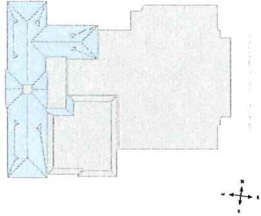
* Squares are rounded up to the 1/3 of a square

Additional materials needed for ridge, hip, and starter lengths are not included in the above table. The provided suggested waste factor is intended to serve as a guide—actual waste percentages may differ based upon several variables that EagleView does not control. These waste factor variables include, but are not limited to, individual installation techniques, crew experiences, asphalt shingle material subtleties, and potential salvage from the site. Individual results may vary from the suggested waste factor that EagleView has provided. The suggested waste is not to replace or substitute for experience or judgment as to any given replacement or repair work.

Penetrations	1-27	28-33	34	35-37	38-42	43	44	45	46	47
Area (sq ft)	0.3	1	2.3	4	6.2	6.3	8	9	10	8
Perimeter (ft)	2	4	6	8	10	10	12	12	12.6	13
	48	49	50	51	52	53	54	55	56	57
Area (sq ft)	11.3	12	16	16.4	17.6	20.2	27.5	30.2	28.9	30.1
Perimeter (ft)	14	14	16	16.2	16.8	18	21	22	24	24.2

Any measured penetration smaller than 3.0x3.0 Feet may need field verification. Accuracy is not guaranteed. The total penetration area is not subtracted from the total roof area.

All Structures Totals



Lengths, Areas and Pitches

Ridges = 294 ft (14 Ridges)
 Hips = 195 ft (8 Hips).
 Valleys = 298 ft (29 Valleys)
 Rakes[†] = 161 ft (23 Rakes)
 Eaves/Starter[‡] = 682 ft (24 Eaves)
 Drip Edge (Eaves + Rakes) = 843 ft (47 Lengths)
 Parapet Walls = 631 (20 Lengths).
 Flashing = 81 ft (21 Lengths)
 Step flashing = 75 ft (31 Lengths)
 Total Penetrations Area = 311 sq ft
 Total Roof Area Less Penetrations = 35,304 sq ft
 Total Penetrations Perimeter = 404 ft
 Predominant Pitch = 0/12
Total Area (All Pitches) = 35,615 sq ft

Property Location

Longitude = -71.3595377
 Latitude = 41.7608444

Notes

This was ordered as a commercial property. There were no changes to the structure in the past four years.

Total Roof Facets = 44
 Total Penetrations = 57

Parapet Wall Area Table							
Wall Height (ft)	1	2	3	4	5	6	7
Vertical Wall Area	631	1262	1893	2524	3155	3786	4417

This table provides common parapet wall heights to aid you in calculating the total vertical area of these walls. Note that these values assume a 90 degree angle at the base of the wall. Allow for extra materials to cover cant strips and tapered edges.

† Rakes are defined as roof edges that are sloped (not level).
 ‡ Eaves are defined as roof edges that are not sloped and level.

640 Bullocks Point Ave, Riverside, RI 02915

Report: 58438874

IMPORTANT LEGAL NOTICE AND DISCLAIMER**Notice and Disclaimer**

No Warranty: The Copyrighted Materials are provided to you "as is," and you agree to use it at your own risk.

EagleView Technologies makes no guarantees, representations or warranties of any kind, express or implied, arising by law or otherwise, including but not limited to, content, quality, accuracy, completeness, effectiveness, reliability, fitness for a particular purpose, usefulness, use or results to be obtained from the Copyrighted Materials.

Contractors agree to always conduct a preliminary site survey to verify Roof Report ordered. In the event of an error in a Report, your sole remedy will be a refund of the fees paid by you to obtain this Report.