



**NORTHEAST
COLLABORATIVE
ARCHITECTS**

650 Ten Rod Road
North Kingstown, RI 02852
v. 401.846.9583

Civil Engineers
Joe Casali Engineering
300 Post Road
Warwick, RI 02888
Phone: (401) 944-1300

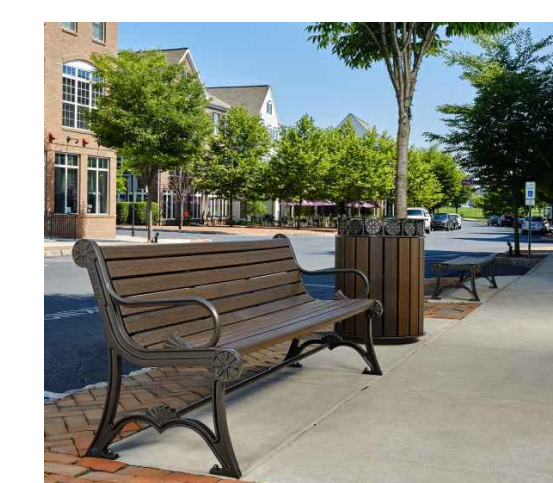
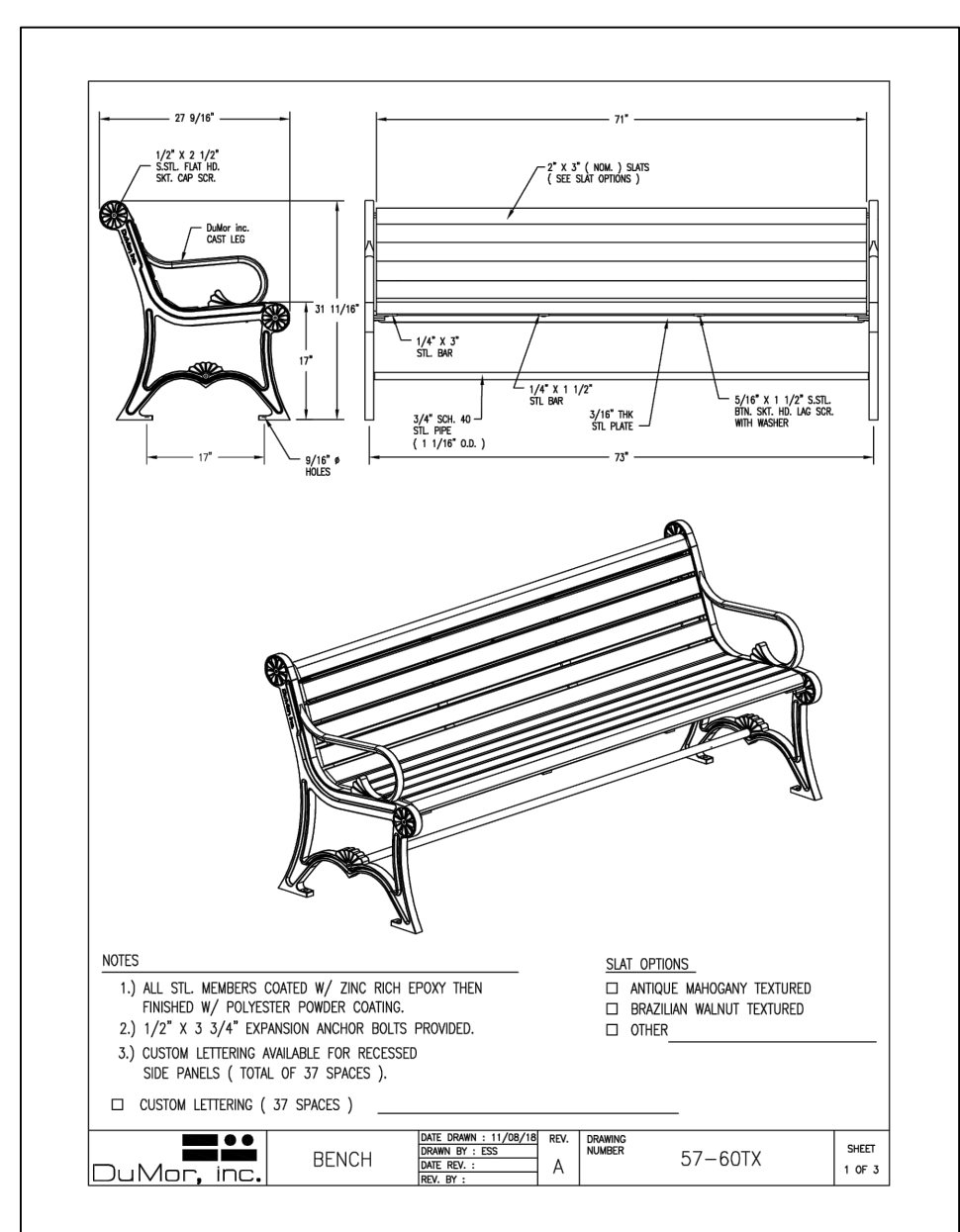
**Mechanical, Electrical,
Plumbing Engineers:**
Andre Gill Engineering
North Smithfield, RI 02896
Phone: (401) 441-3414

Structural Engineers:
C.A. Fretzer Associates
50 Freeway Drive
Cranston, RI 02920
Phone: (401) 785-2690

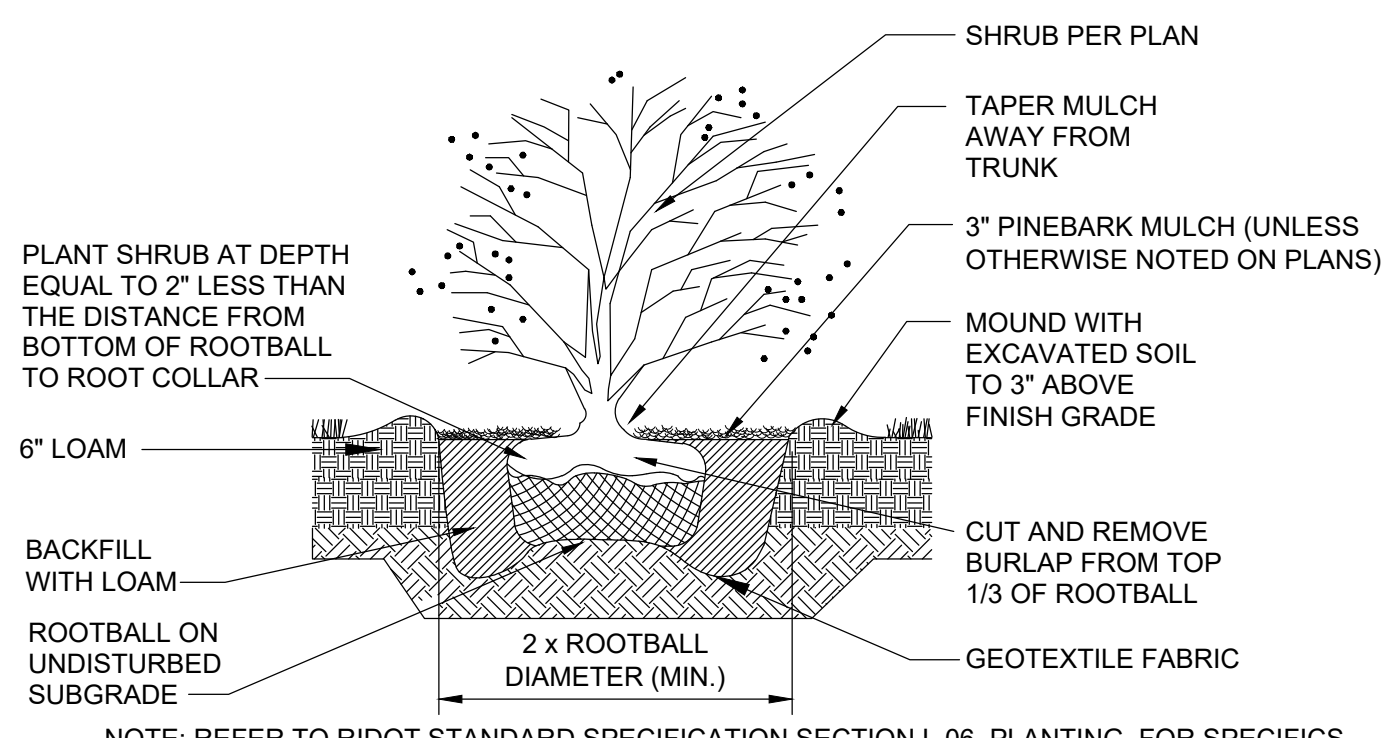
Landscape Architects:
Diane C. Soule & Associates
422 Farnum Pike
Smithfield, Rhode Island
Phone: (401) 231-0736

PLANT SCHEDULE

SYMBOL	CODE	BOTANICAL / COMMON NAME	SIZE	CONTAINER	QTY	DETAIL	REMARKS
SHRUBS							
	CH	Clethra alnifolia 'Hummingbird' / Summersweet	5 gal	CONT.	3		
	HM2	Hydrangea macrophylla 'Nikko Blue' / Nikko Blue Hydrangea	3 gal.	CONT.	11		



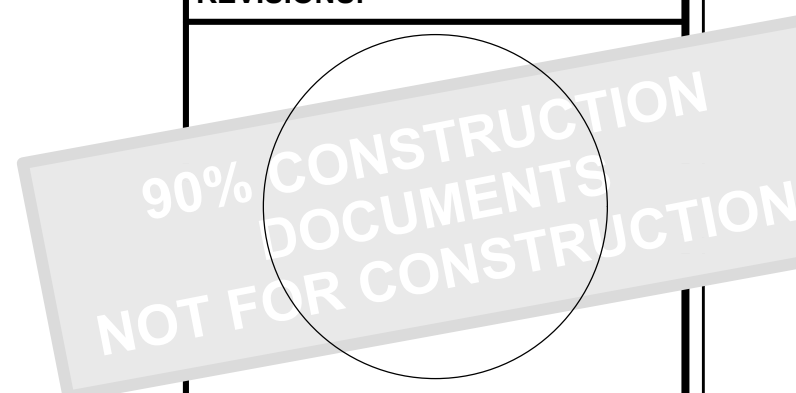
BENCH



SHRUB PLANTING DETAIL
no scale

**CRESCENT PARK
NEW PUBLIC BATHROOMS
CITY OF EAST PROVIDENCE
701 BULLOCKS POINT AVENUE
RIVERSIDE, RI 02915**

REVISIONS:



LANDSCAPE PLAN

Diane C. Soule & Associates, ASLA
Landscape Architecture
422 Farnum Pike
Smithfield, Rhode Island 02917
www.dianesoulesandassociates.com
401.231.0736
email: dsoule@dcsa.wa

DATE: 10/21/24

NCA/JCE JOB NO.: 23100/23-32

DRAWING NO.:

L1.1