

CITY OF EAST PROVIDENCE, RI  
DEPARTMENT OF PUBLIC WORKS

# WATER POLLUTION CONTROL FACILITY IMPROVEMENTS AND CONCRETE LINING

DECEMBER 2022

MAYOR ROBERTO L. DASILVA

**DANIEL BORGES**  
DIRECTOR OF PUBLIC WORKS



PROJECT LOCATION

PROJECT LOCATION  
NOT TO SCALE

INDEX TO DRAWINGS

SHEET NO.	DISCIPLINE NO.	DESCRIPTION
1	G-000	COVER SHEET, INDEX OF DRAWINGS
2	C-001	LEGENDS AND GENERAL NOTES
3	C-002	SITE PLAN/BYPASS LAYOUT
4	C-003	BYPASS PLAN I
5	C-004	BYPASS PLAN II
6	C-005	BYPASS PLAN III
7	C-006	BYPASS PLAN IV
8	C-007	BYPASS PLAN V
9	C-008	BYPASS DETAILS I
10	C-009	BYPASS DETAILS II
11	S-01	GENERAL NOTES AND DESIGN CRITERIA
12	S-02	1-HEADWORKS TOP PLAN AND INTERIOR ELEVATION WALL A
13	S-03	1-HEADWORKS INTERIOR ELEVATION WALLS
14	S-04	1-HEADWORKS INTERIOR ELEVATION WALLS AND SECTIONS
15	S-05	3 & 5 - PRIMARY CLARIFIERS EFFLUENT CHANNELS TOP PLANS AND INTERIOR ELEVATIONS
16	S-06	3 & 5 - PRIMARY CLARIFIERS EFFLUENT CHANNELS INTERIOR WALL ELEVATIONS
17	S-07	3 & 5 - PRIMARY CLARIFIERS EFFLUENT CHANNELS ELEVATIONS AND SECTIONS
18	S-08	8 - AERATION TANKS SPLITTER BOX PLANS AND INTERIOR WALL ELEVATIONS
19	S-09	8 - AERATION TANKS SPLITTER BOX INTERIOR WALL ELEVATIONS
20	S-10	8 - AERATION TANKS SPLITTER BOX SECTIONS
21	S-11	2 - PRIMARY CLARIFIER SPLITTER STRUCTURE, 7 - PRIMARY CLARIFIER RAISED MANHOLE AND MAHOLES 4 & 6 PLANS AND INTERIOR ELEVATIONS
22	S-12	TYPICAL REPAIR DETAILS
23	S-13	TYPICAL COATING/LINING DETAILS





## GENERAL NOTES

1. THE CONTRACTOR SHALL VERIFY ALL EXISTING CONDITIONS IN THE FIELD AND REPORT ANY DISCREPANCIES BETWEEN PLANS AND ACTUAL CONDITIONS TO THE OWNER'S REPRESENTATIVE PRIOR TO THE START OF WORK
2. THE ACCURACY AND COMPLETENESS OF UNDERGROUND UTILITIES AS SHOWN ON THE PLANS ARE NOT GUARANTEED. IT SHALL BE THE CONTRACTOR'S RESPONSIBILITY TO DETERMINE EXACT LOCATION, SIZE, TYPE, ETC. OF ALL UNDERGROUND UTILITIES THAT MAY BE AFFECTED BY THE WORK. AT LEAST 72 HOURS BEFORE DIGGING BEGINS THE CONTRACTOR IS REQUIRED TO CALL DIGSAFE AND THE PROPER LOCAL AUTHORITIES OR RESPECTIVE UTILITY COMPANIES TO CONFIRM THE LOCATION OF ALL EXISTING UTILITIES. ANY DAMAGE DUE TO FAILURE OF THE CONTRACTOR TO CONTACT THE PROPER AUTHORITIES SHALL BE BORNE BY THE CONTRACTOR.
3. THE CONTRACTOR IS HEREBY NOTIFIED THAT ADDITIONAL WORK WITHIN THE PROJECT LIMITS MAY BE PERFORMED BY OTHERS.
4. ALL UTILITY SERVICES SHALL REMAIN ACTIVE AT ALL TIMES EXCEPT AS MAY BE APPROVED BY THE ENGINEER.
5. CONTRACTOR SHALL INSTALL TEMPORARY CONSTRUCTION FENCE AS REQUIRED.
6. THE CONTRACTOR IS RESPONSIBLE FOR THE PROTECTION OF THE EXISTING FEATURES AND STRUCTURES WITHIN AND ADJACENT TO THE WORK. IN THE EVENT OF DAMAGE, THE REPAIRS OR REPLACEMENT SHALL BE COMPLETED AT THE CONTRACTOR'S EXPENSE AS APPROVED BY THE ENGINEER.
7. THE CONTRACTOR IS RESPONSIBLE FOR SEQUENCING OF ALL WORK TO AVOID CONFLICTS BETWEEN ALL PROPOSED WORK.
8. THE CONTRACTOR IS RESPONSIBLE FOR PERFORMING ALL WORK AS INDICATED ON THE DRAWINGS, IN THE SPECIFICATIONS AND AS DIRECTED BY THE ENGINEER IN CONFORMANCE WITH ALL APPLICABLE CODES AND IN A PROPER AND WORKMANLIKE MANNER.
9. THE CONTRACTOR SHALL BE RESPONSIBLE FOR OBTAINING ALL NECESSARY PERMITS AND COORDINATING INSPECTIONS AS REQUIRED. PERMIT FEES SHALL BE PAID DIRECTLY BY THE CONTRACTOR AND SHALL BE INCLUDED IN THE BID.
10. WHERE AN EXISTING UTILITY IS FOUND TO CONFLICT WITH THE PROPOSED WORK, THE LOCATION, ELEVATION AND SIZE OF THE UTILITY SHALL BE ACCURATELY DETERMINED WITHOUT DELAY BY THE CONTRACTOR, AND THE INFORMATION FURNISHED TO THE OWNER'S REPRESENTATIVE FOR RESOLUTION OF THE CONFLICT.
11. IT IS THE CONTRACTOR'S RESPONSIBILITY TO VERIFY ALL EXISTING CONDITIONS AT THE SITE.
12. CONTRACTOR TO REMOVE AND DISPOSE OF ALL ITEMS IDENTIFIED TO BE REMOVED ON DRAWINGS IN ACCORDANCE WITH ALL LOCAL AND STATE REGULATIONS.

## ABBREVIATIONS

ADA	AMERICANS WITH DISABILITIES ACT	HH	HAND HOLE
ASSF	AREA SUBJECT TO STORMFLOW	HP	HIGH PRESSURE
ALP	AIR LOW PRESSURE	INV	INVERT
BF	BLIND FLANGE	MO	MAIL BOX
BIT. CONC.	BITUMINOUS CONCRETE	ML	MIXED LIQUOR
BOTT.	BOTTOM	OV	OVERFLOW
CB	CATCHBASIN	PE	PRIMARY EFFLUENT
CL	CENTERLINE	P	PROPERTY LINE
CMP	CORRUGATED METAL PIPE	PSC	PRIMARY SCUM
CONC.	CONCRETE	PVC	POLYVINYLCHLORIDE
D	DRAIN	PW	PROCESS WATER
DI	DUCTILE IRON	RAS	RETURN ACTIVATED SLUDGE
DIA	DIAMETER	RCP	REINFORCED CONCRETE PIPE
DMH	DRAIN MANHOLE	S	SEWER
DWGS	DRAWINGS	SC	SCUM
E	ELECTRIC	SE	SECONDARY EFFLUENT
EMH	ELECTRIC MANHOLE	SMH	SEWER MANHOLE
EXIST.	EXISTING	T.O.P.	TOP OF PIPE
FH	FIRE HYDRANT	T.O.W.	TOP OF WALL
FM	FORCEMAIN	W	WATER
FT	FEET	WG	WATER GATE
		WAS	WASTE ACTIVATED SLUDGE

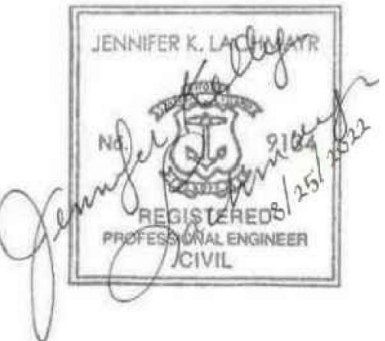
## LEGEND

BUILDING	
EDGE OF PAVEMENT	
CHAIN LINK FENCE	
PROPERTY LINE	
EASEMENT	
CONTOUR (INDEX)	
CONTOUR (INTERMEDIATE)	
SPOTELEVATION	
MANHOLE (DRAIN, ELECT, SEWER)	
UTILITY WATER	
UTILITY SEWER	
UTILITY FORCE MAIN	
UTILITY DRAIN	
UTILITY ELECTRIC	
UTILITY GAS	
DIRECTION OF FLOW	
GAS GATE	
WATER GATE	
HYDRANT	
UTILITY POLE	
CATCH BASIN	
WETLANDS BOUNDRY	
WETLANDS	
TREE LINE	
TREE WITH SIZE/TYPE	
SHRUB	
BOULDER	
GATE VALVE	



LEGAL ENTITY:  
ARCADIS U.S., INC.

## CONSULTANTS



CITY OF EAST PROVIDENCE, RI  
DEPARTMENT OF  
PUBLIC WORKS

# WATER POLLUTION CONTROL FACILITY IMPROVEMENTS AND CONCRETE LINING

**ARCADIS PROJ. NO. 30003179/00702**

NO.	DATE	ISSUED FOR	BY

COPYRIGHT: ARCADIS U.S., INC.  
2022

DATE: DECEMBER 2022

PROJECT NO.: 30003179/00702

FILE NAME: C-001

DESIGNED BY: E. RAFFI

DRAWN BY: H. BASAVANAND

CHECKED BY: W. CASEY

## SHEET TITLE

CIVIL

## LEGENDS AND GENERAL NOTES

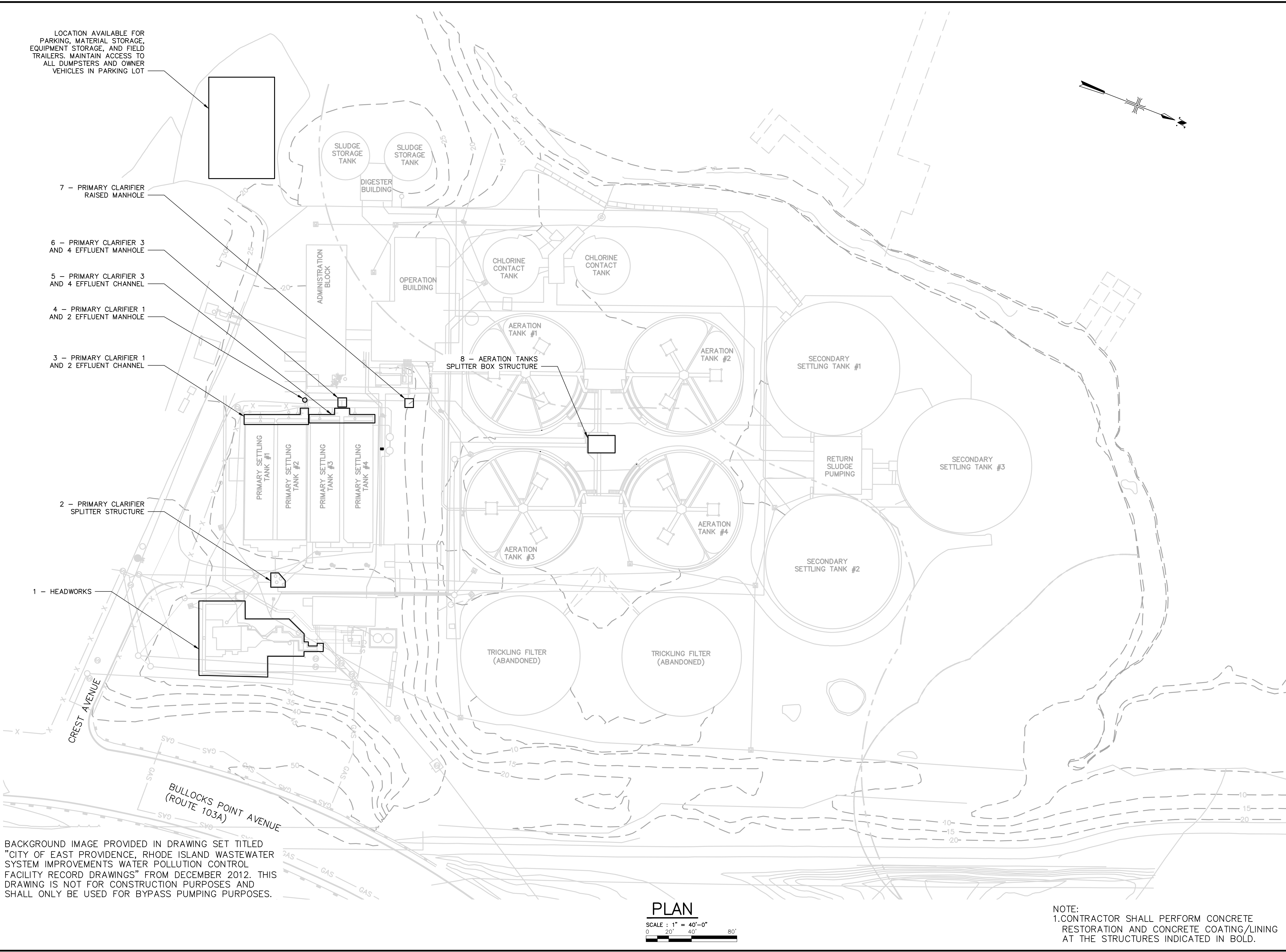
SCALE: AS SHOWN


C-001

SHEET 2 OF 23



User: J:\OSAMATB7017 Spec: AUS-NS5MOD File: C:\USERS\HOSAMATB7017\ARCADIS\30003179 - 06421002.0000- WASTEWATER OPERATING CONTRACT - PROJECT DOCUMENTS\GEC CAD DOCUMENTS\GEC CAD DOCUMENTS\D02-DRAWINGS\SHEETS\CIVIL\G-002.DWG Scale: 1:1 Saved Date: 8/23/2022 Time: 13:40 Plot Date: Hosamth, Basavanand, 12/1/2022, 13:40






LEGAL ENTITY:  
ARCADIS U.S., INC.

CONSULTANTS

SEALS



JENNIFER K. LACHY  
REGISTERED PROFESSIONAL ENGINEER  
CIVIL

CITY OF EAST PROVIDENCE, RI  
DEPARTMENT OF  
PUBLIC WORKS

WATER POLLUTION  
CONTROL FACILITY  
IMPROVEMENTS  
AND CONCRETE LINING

ARCADIS PROJ. NO. 30003179/00702

NO.	DATE	ISSUED FOR	BY

COPYRIGHT: ARCADIS U.S., INC.  
2022

DATE: DECEMBER 2022

PROJECT NO.: 30003179/00702

FILE NAME: C-002

DESIGNED BY: E. RAFFI

DRAWN BY: H. BASAVANAND

CHECKED BY: W. CASEY

SHEET TITLE

CIVIL  
SITE PLAN

SCALE: AS SHOWN

C-002

SHEET 3 OF 23





1. FOR LEGEND, ABBREVIATION AND GENERAL NOTES SEE SHEET C-001.
2. SEWAGE FLOW TO HEADWORKS TO BE BYPASSED AS INDICATED AND SPECIFIED TO PROVIDE A DRY WORK SPACE. SCREENINGS REMOVAL OF ALL FLOW IS REQUIRED..
3. CONTRACTOR IS RESPONSIBLE FOR REMOVAL AND REINSTALLATION OF ALL GRATES, PLATES, AND COVERS FOR STRUCTURES REQUIRING ACCESS AND/OR RESTORATION. CONTRACTOR MUST COORDINATE WITH OWNER ACCORDINGLY.
4. IMPLEMENT LEAK PREVENTION MEASURES SUCH AS SAND BAGS, INFLATABLE PLUGS, AND SUMP PUMPS IN ORDER TO MAINTAIN A DRY WORK SPACE.
5. SEE SHEET C-008B: BYPASS DETAILS I FOR MORE NOTES ON FLOW DIVERSION AT THE HEADWORKS.
6. FLOW RATES INDICATED ARE FROM WET WEATHER FLOW READINGS TAKEN BY THE OWNER'S CONTRACT OPERATIONS FIRM. FLOW RATES ARE INDICATED IN MILLION GALLONS PER DAY (MGD). CONTRACTOR TO PROVIDE BYPASS PUMPING PROVISIONS FOR THE MAXIMUM FLOW RATES SPECIFIED IN SECTION 01 14 16 - COORDINATION WITH OWNER'S OPERATIONS.

