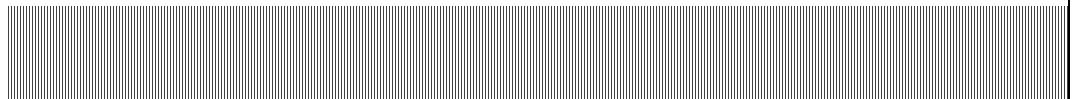
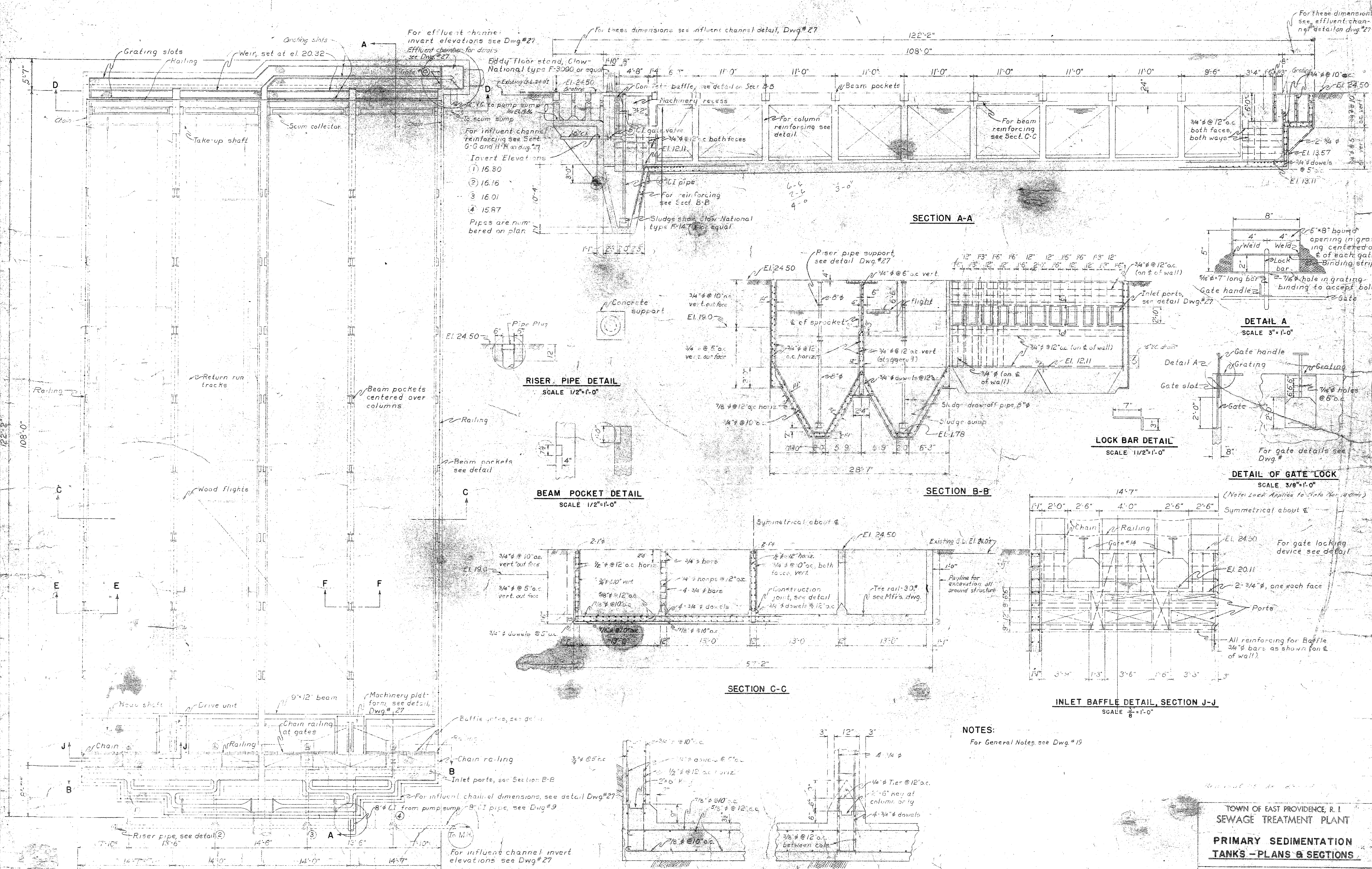

Appendix D – Excerpts of Referenced Documents

- **Excerpts from Sewage Treatment Plant Drawings, 1951**
Primary Clarifiers 1&2 Original – 3 sheets
- **Excerpt from WPCF Secondary Treatment Drawings, 1973**
Primary Clarifiers 1&2 – 1sheet
Primary Clarifiers 3&4 – 1 sheet
Barrington Sewer and Raised Manhole – 3 sheets
Primary Clarifier Splitter Structure – 1 sheet
Aeration Tanks 1&2 – 1 sheet
Aeration Tanks 3&4 – 1 sheet
Raw Sewage Pump Station – 2 sheets





PLAN

SECTION A-A

RISER PIPE DETAIL
SCALE 1/2"=1'-0"

BEAM POCKET DETAIL
SCALE 1/2"=1'-0"

SECTION B-B

DETAIL A
SCALE 3"=1'-0"

LOCK BAR DETAIL
SCALE 1 1/2"=1'-0"

DETAIL OF GATE LOCK
SCALE 3/8"=1'-0"

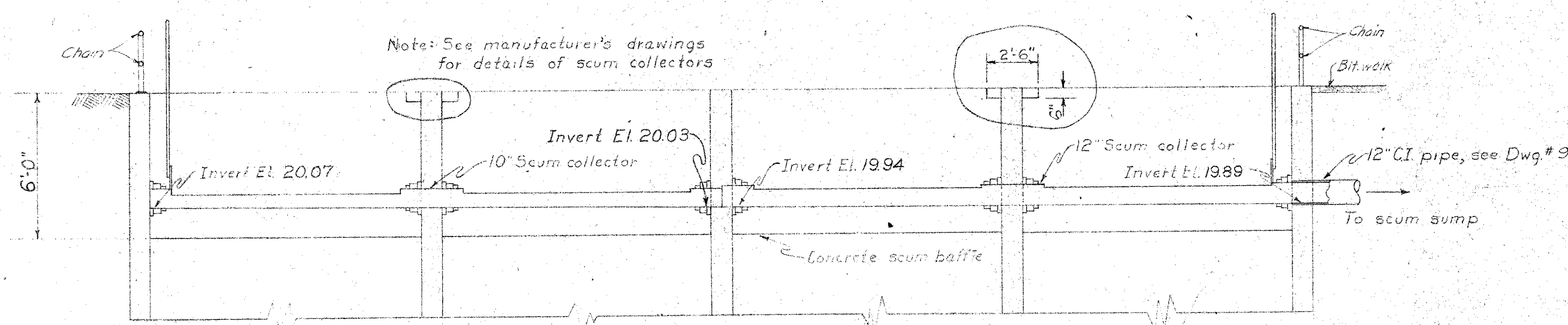
SECTION C-C

INLET BAFFLE DETAIL, SECTION J-J
SCALE 3/8"=1'-0"

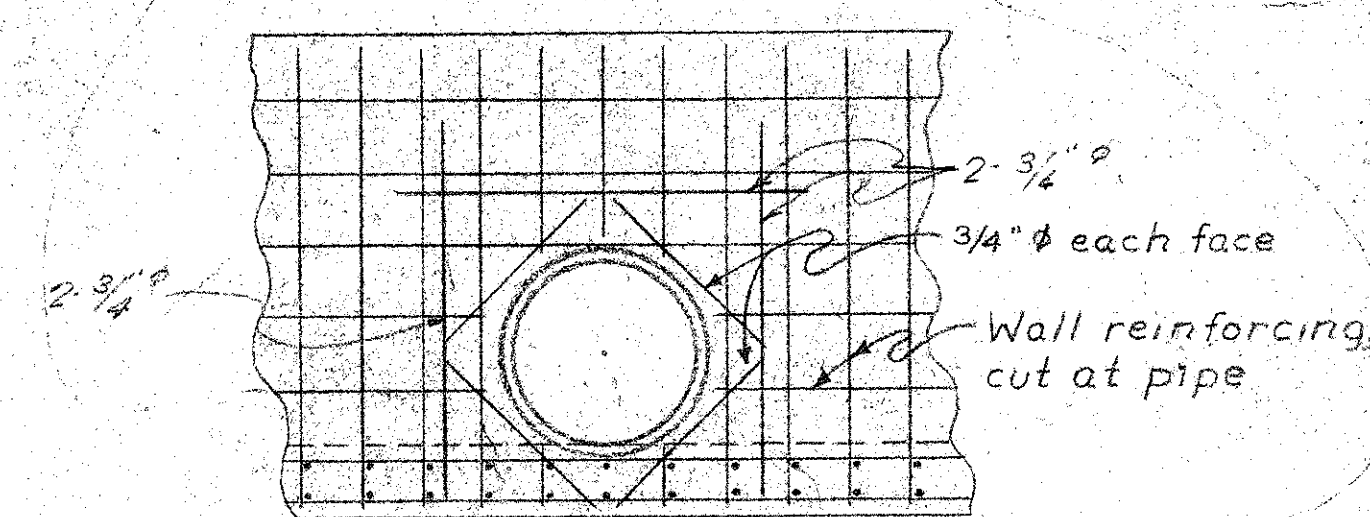
NOTES:
For General Notes see Dwg. #19

SECTION E-E
(SECTION AT CENTER WALL-SIMILAR)
SCALE 3/4"=1'-0"

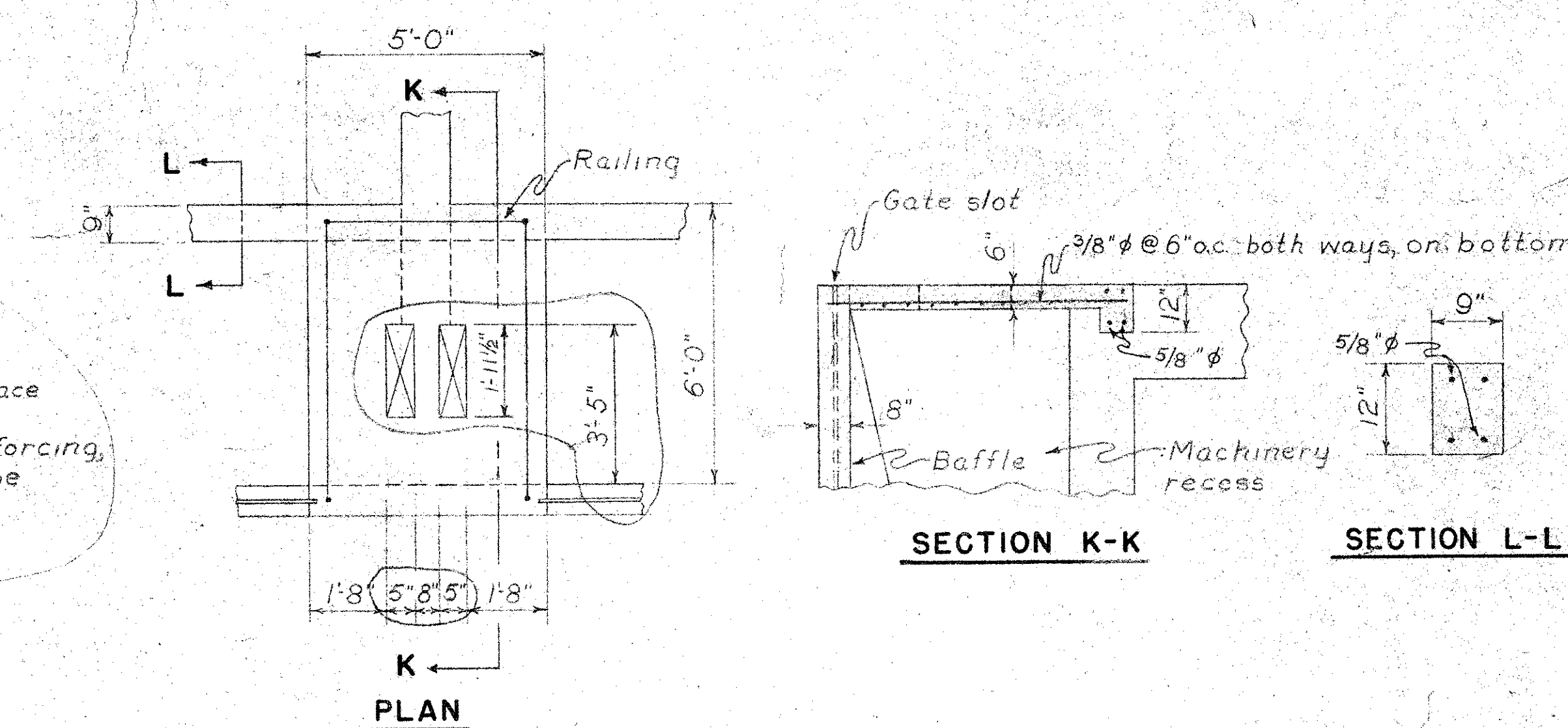
SECTION F-F
SCALE 3/4"=1'-0"



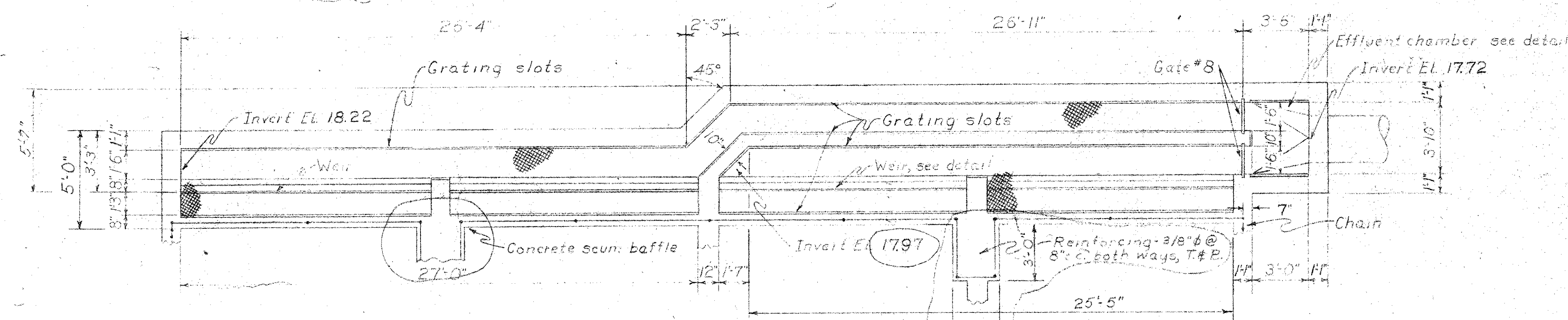
SECTION D-D
SCALE $\frac{1}{4}" = 1'-0"$



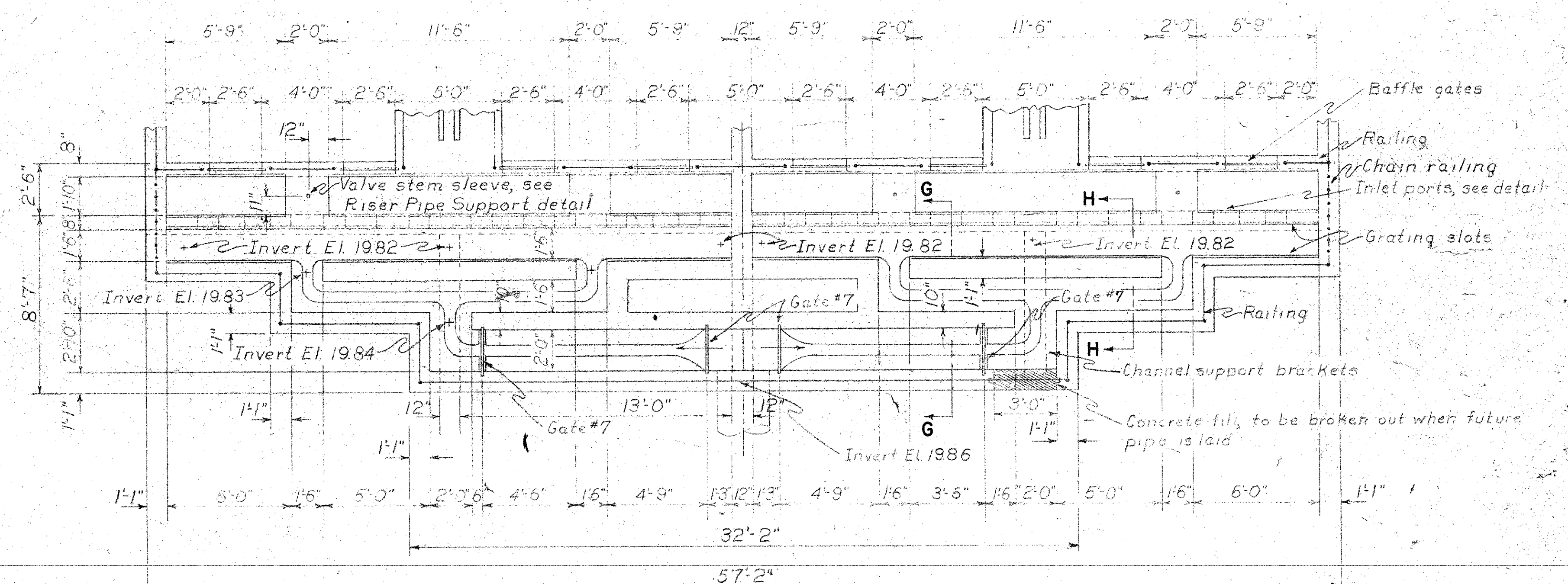
DETAIL OF REINFORCING AROUND PIPES
(TYPICAL)
SCALE $\frac{3}{8}" = 1'-0"$



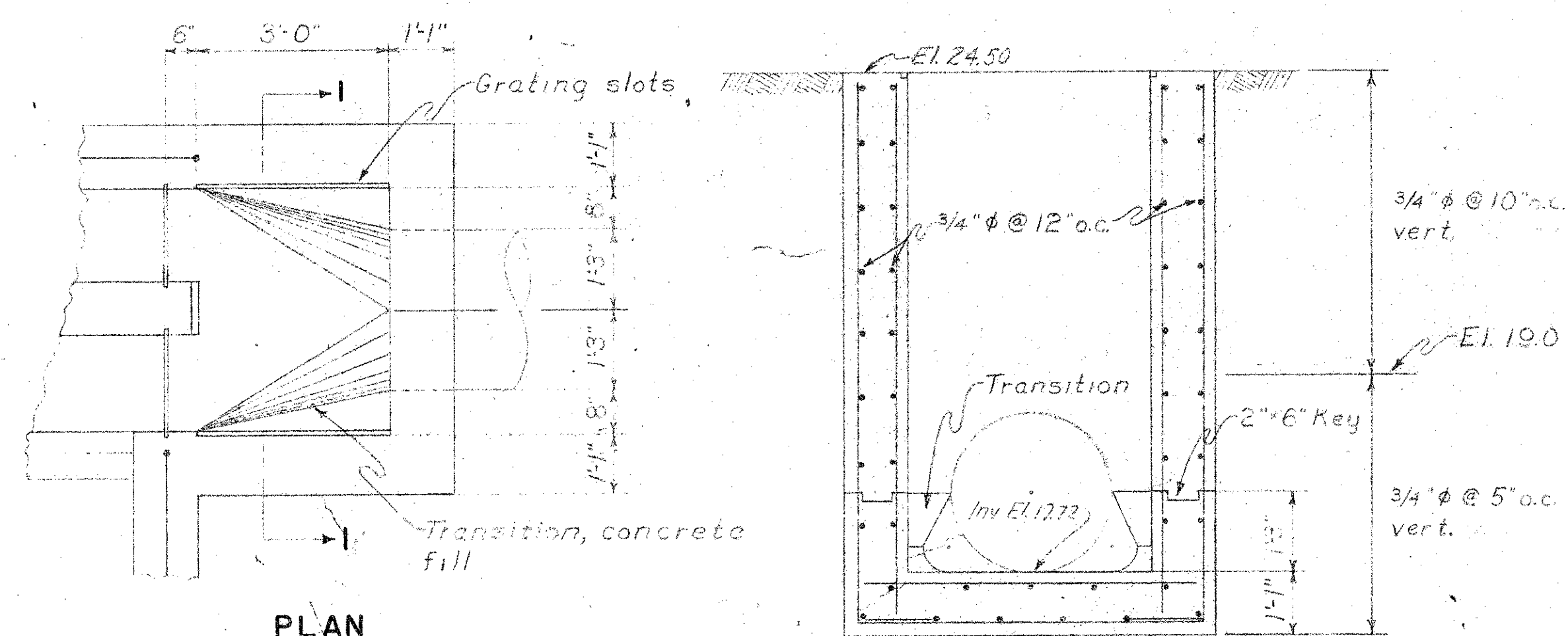
DETAIL OF MACHINERY PLATFORM
SCALE $\frac{3}{8}" = 1'-0"$



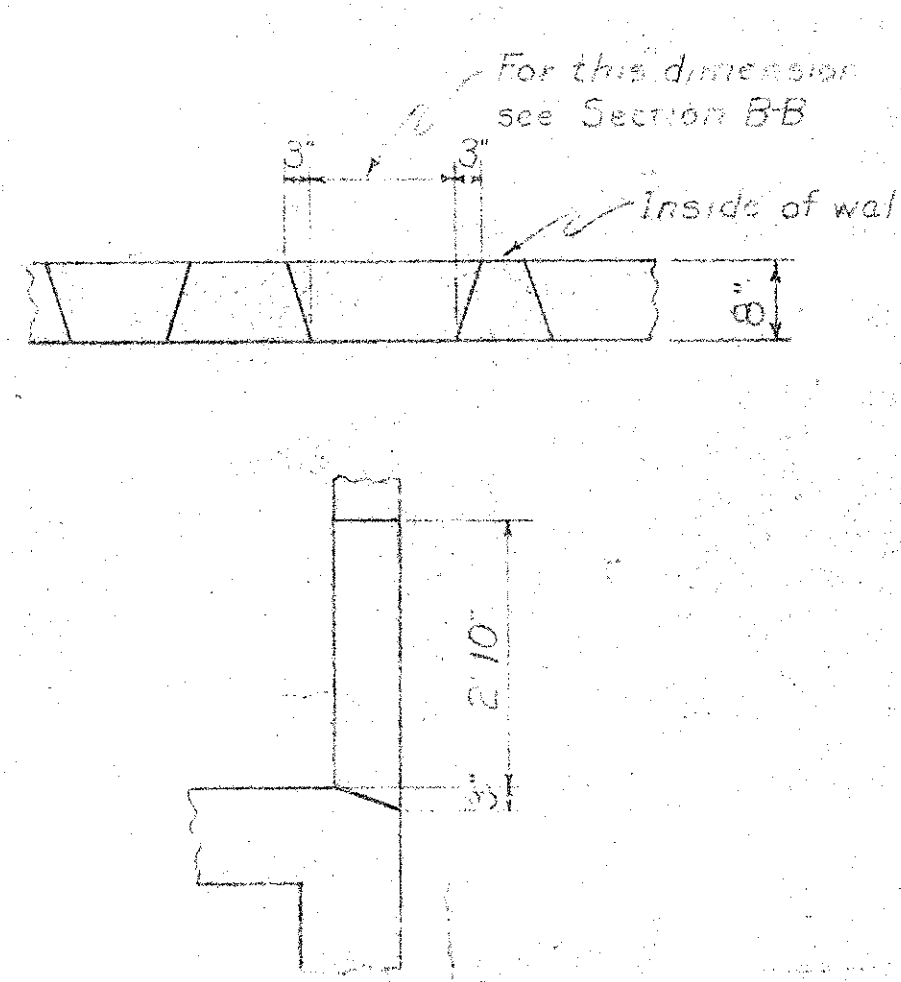
EFFLUENT CHANNEL DETAIL
SCALE $\frac{1}{4}" = 1'-0"$



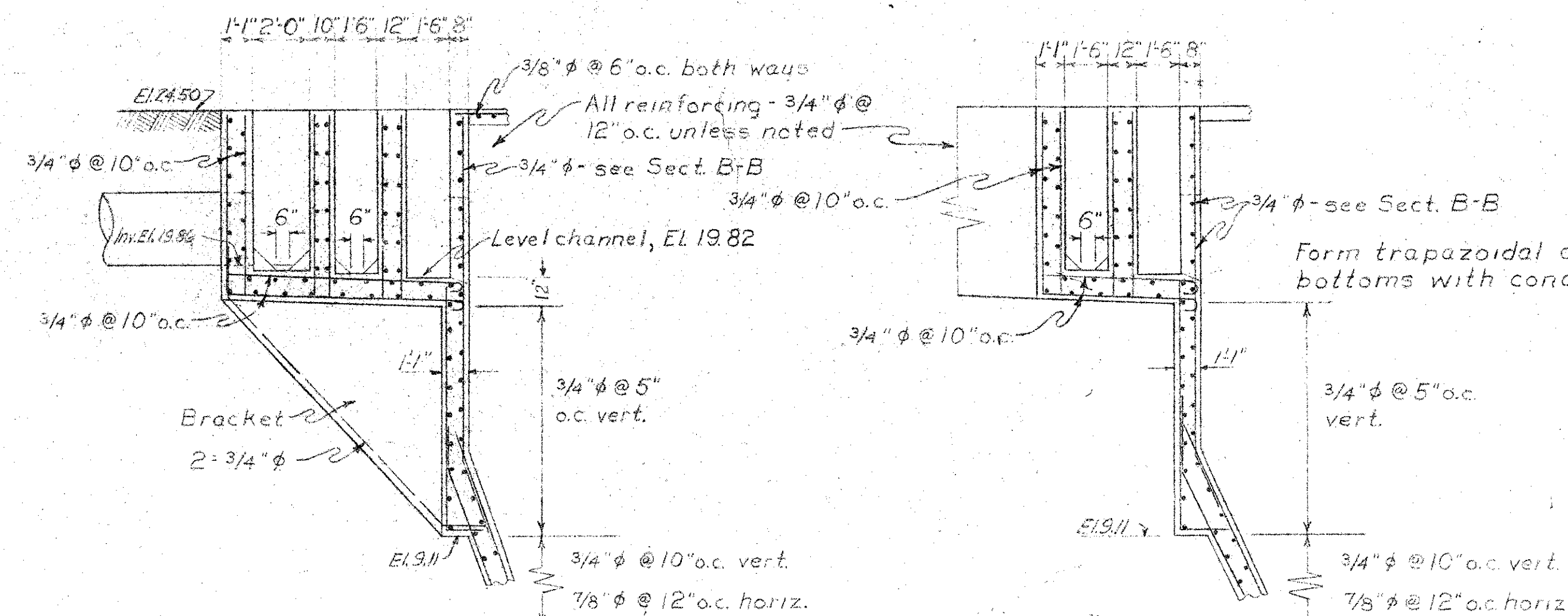
PLAN



EFFLUENT CHAMBER DETAIL
SCALE $\frac{1}{2}" = 1'-0"$

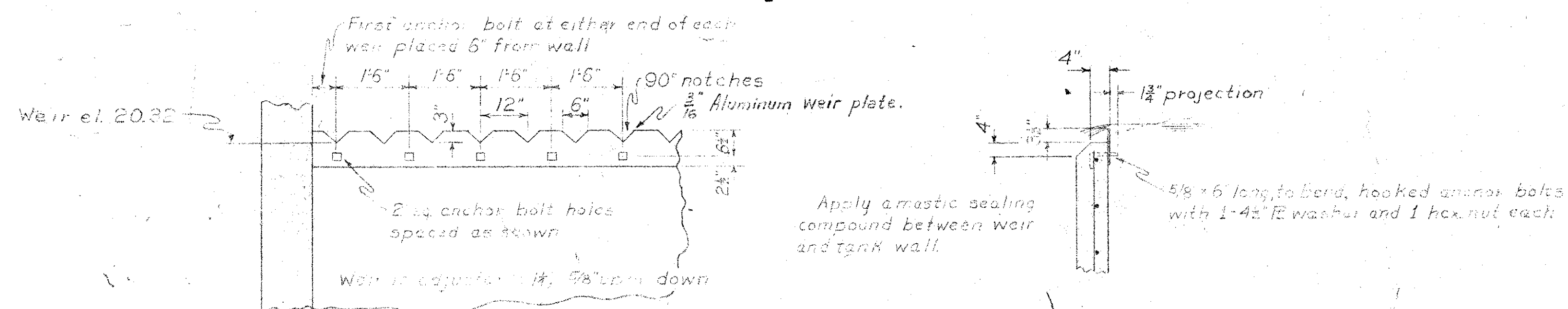


INLET PORT DETAIL
SCALE $\frac{1}{2}" = 1'-0"$

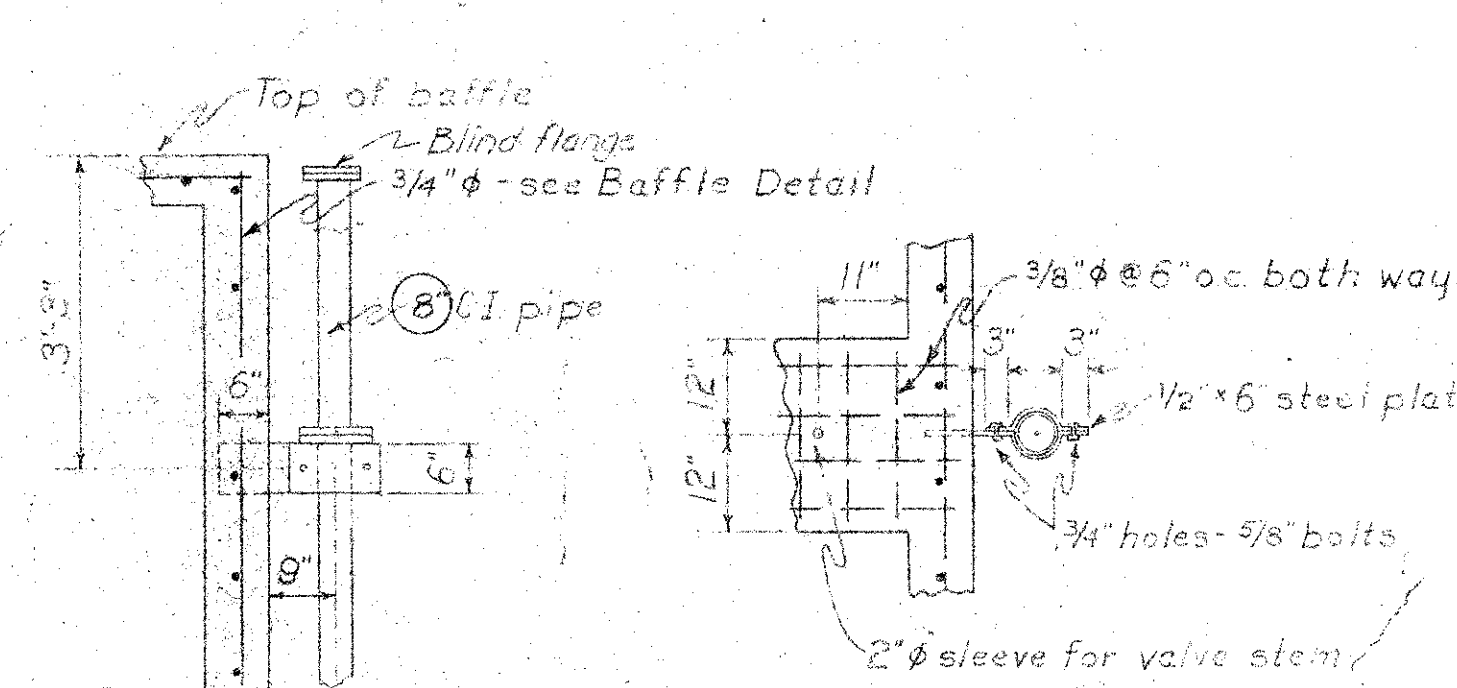


SECTION G-G

SECTION H-H



WEIR AND WEIR ANCHORAGE DETAIL
SCALE $\frac{1}{2}" = 1'-0"$



RISER PIPE SUPPORT DETAIL
SCALE $\frac{1}{2}" = 1'-0"$

INFLUENT CHANNEL DETAIL
SCALE $\frac{1}{4}" = 1'-0"$

NOTES:
For General Notes see Dwg. #19.

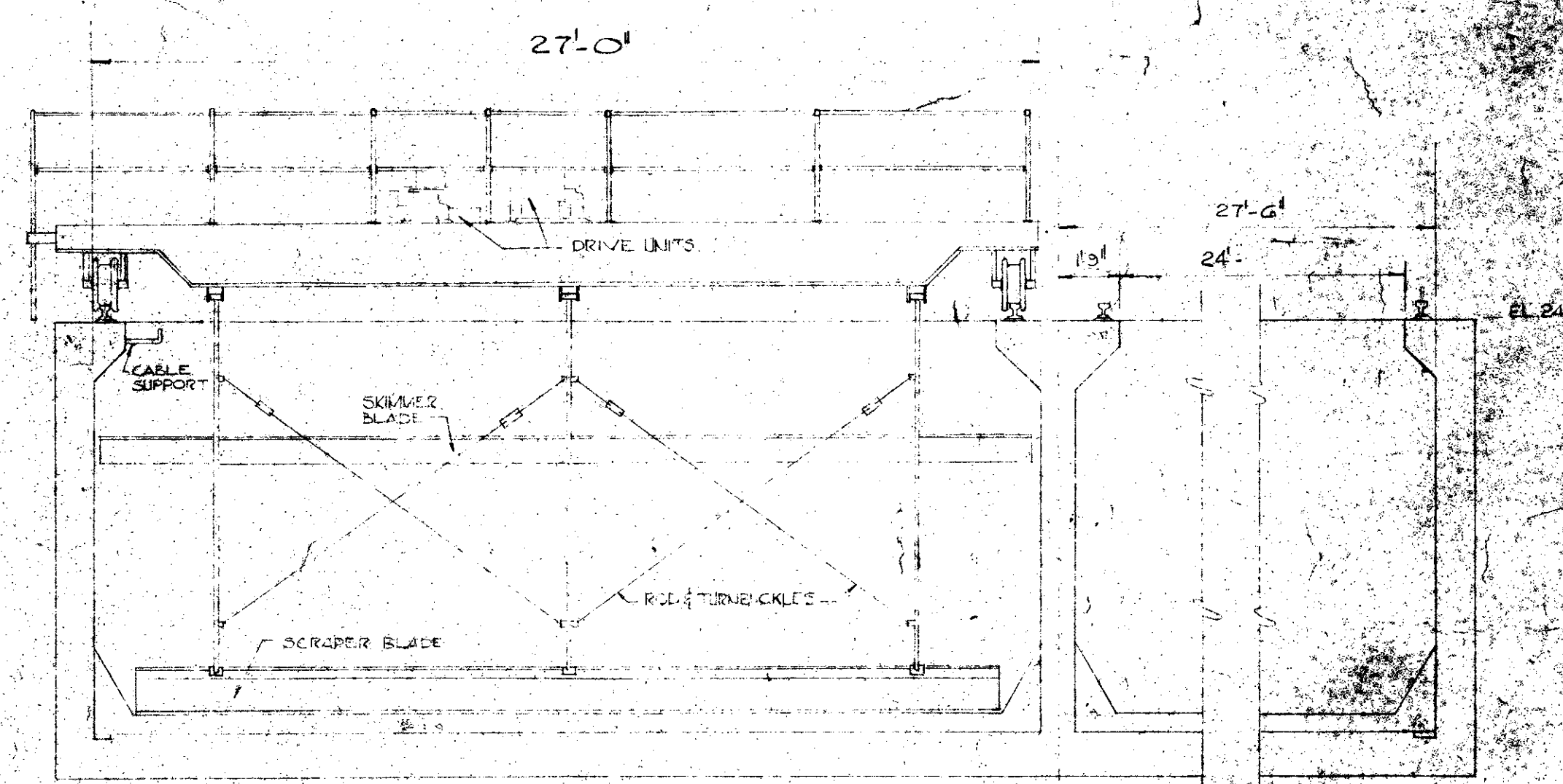
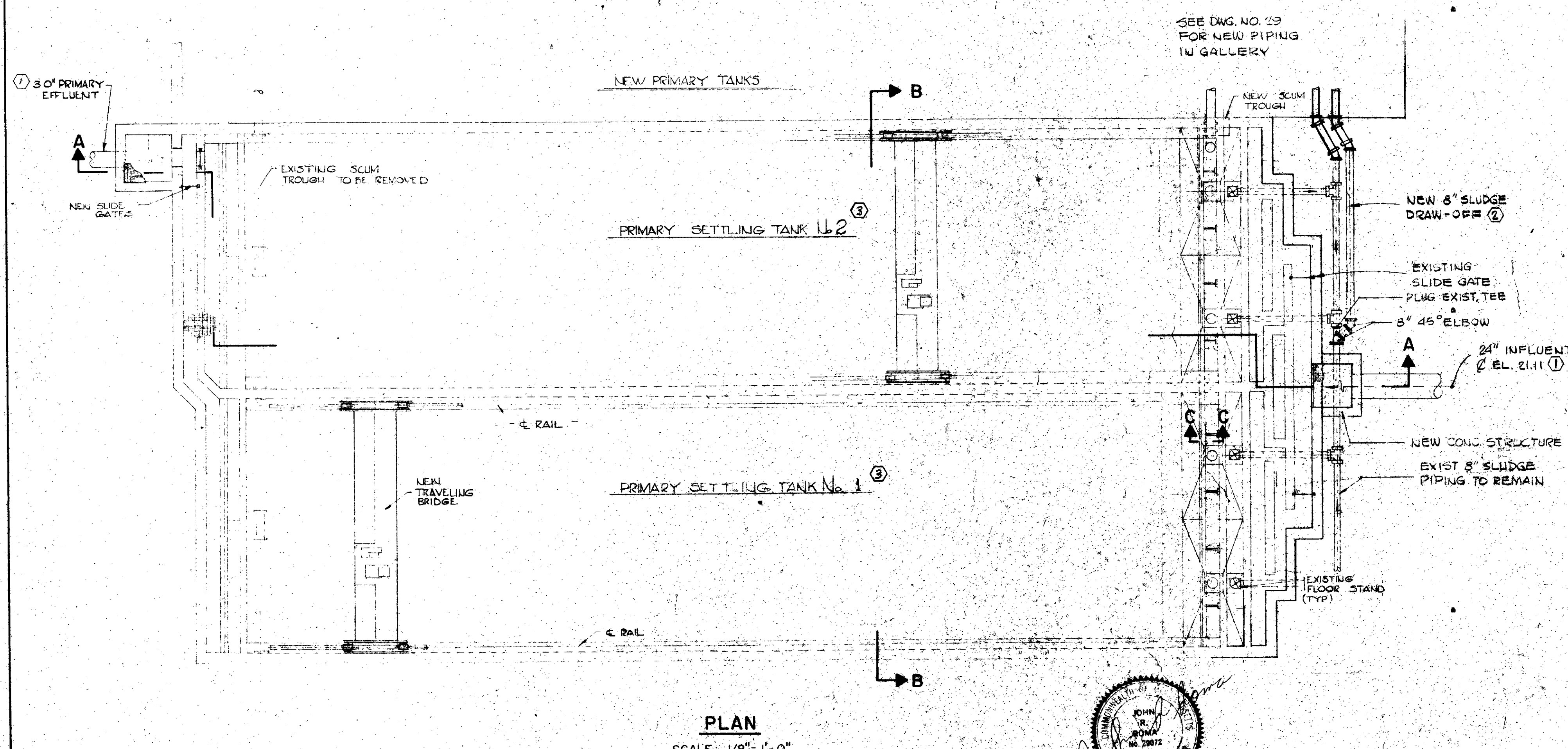
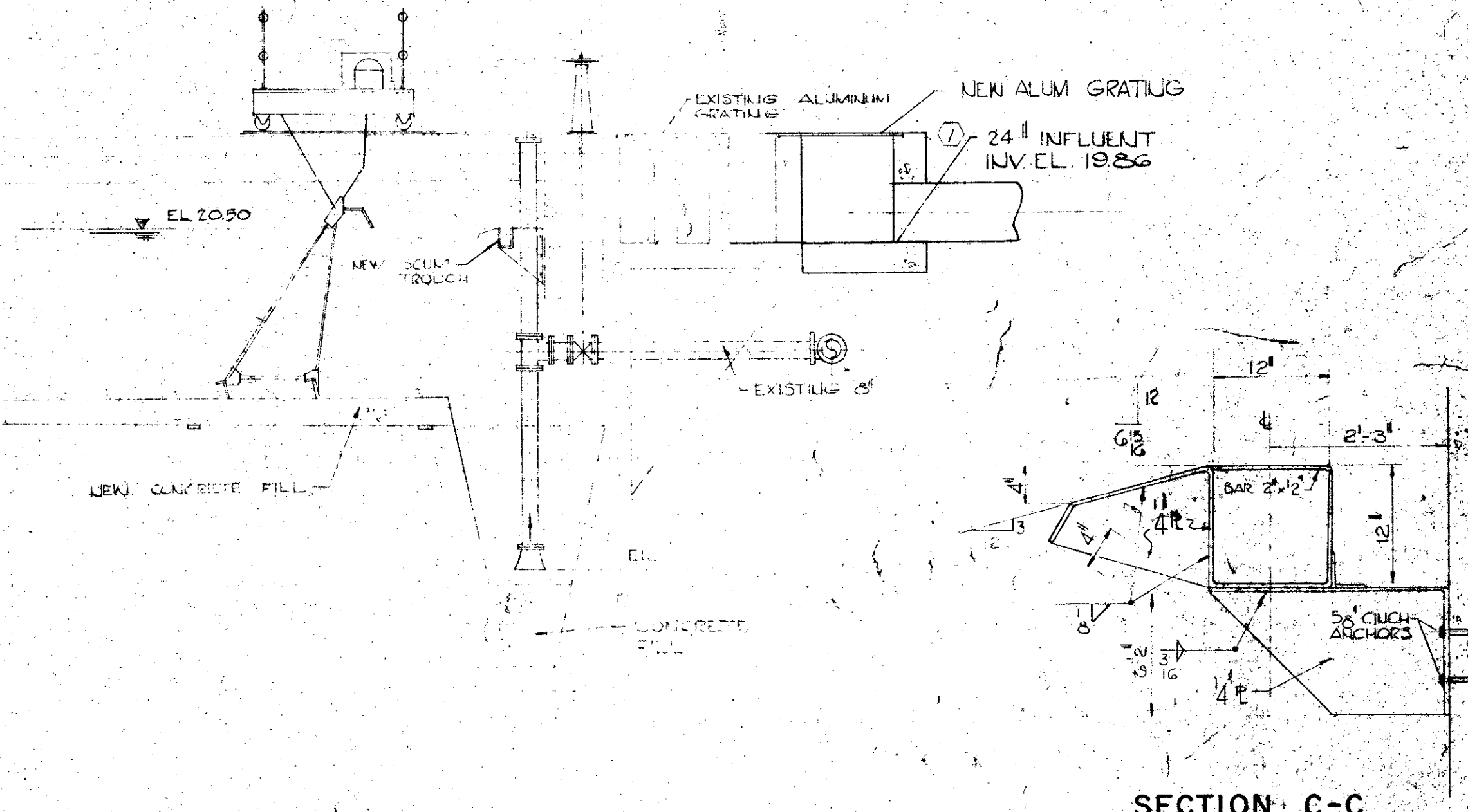
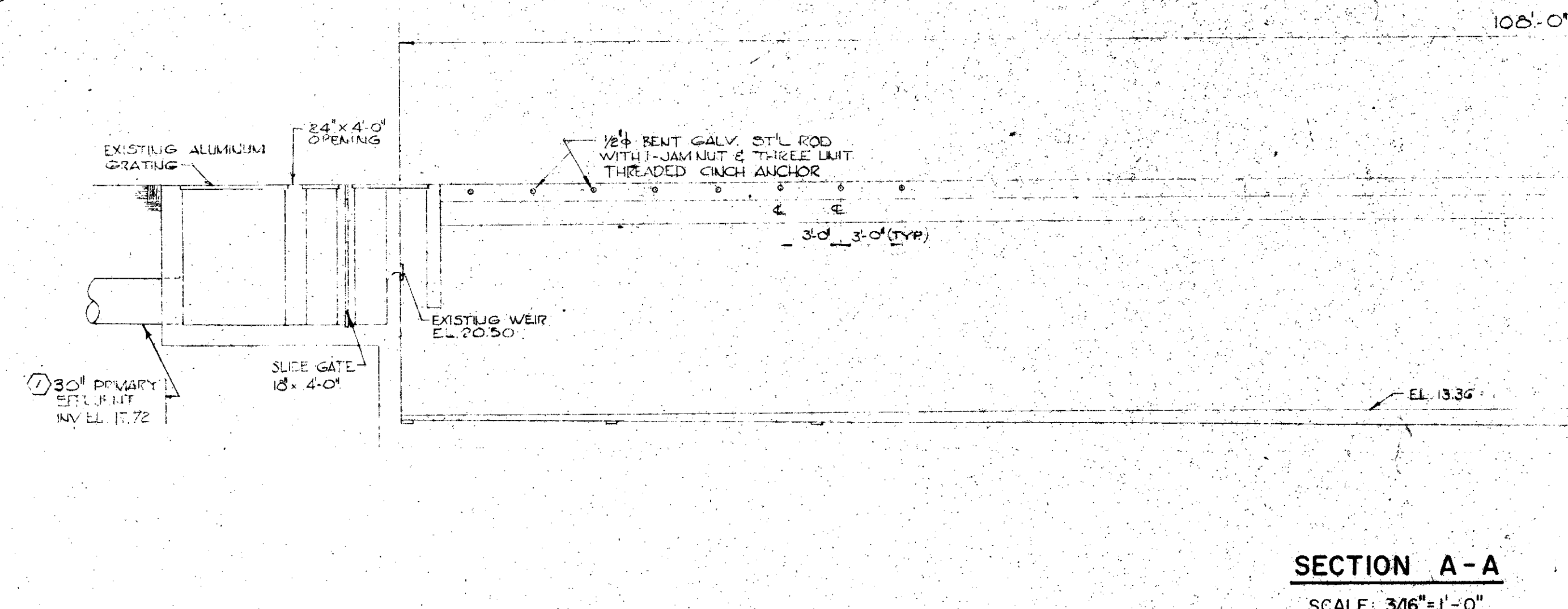
Revisions 5/17/51 As indicated
Revisions 7/16/51 as indicated

TOWN OF EAST PROVIDENCE, R. I.
SEWAGE TREATMENT PLANT
PRIMARY SEDIMENTATION
TANKS - DETAILS

CHARLES A. MAGUIRE & ASSOCIATES
ENGINEERS
PROVIDENCE, R. I. BOSTON, MASS.

DRAWN RCM
CHECKED
SCALE AS SHOWN
DATE FEB 20 1957

FILE NO.
477-1
DWG. NO.
27



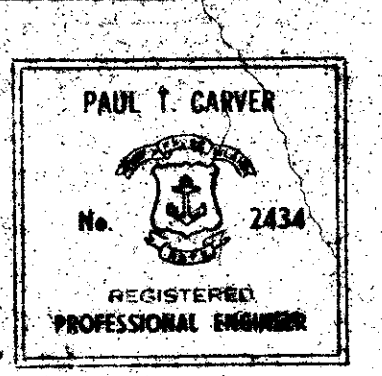
SECTION B-B
SCALE: 1/4"=1'-0"

NOTES:
1. FOR STRUCTURAL DETAILS SEE DWG. NO. 26 AND 27.
2. FOR LOCATION SEE DWG. 2 AND 10.

PLAN
SCALE: 1/8"=1'-0"



REVISION NUMBER	DESCRIPTION	INT.	DATE	REVISION NUMBER	DESCRIPTION	INT.	DATE
	REVISED TO AS-BUILT			3	REVERSED PRIMARY TANK #1 AND PRIMARY TANK #2 IN CALL OUT ONLY	142	1/3/75
				2	ADDED NEW 8" SLUDGE DRAW-OFF PIPING TO PRIMARY SETTLING TANK #1	142	1/3/75
				1	IN PLAN # IN SECTION A-A CHANGED 30" INFLUENT TO 24" & CHANGED 30" PRIMARY EFFLUENT TO 36" ADDENDUM NO. 3	142	7/1/73



DRAWN: T. MELLO DESIGNED: H. CAMPBELL
CHECKED: H. CAMPBELL APPROVED: P. CARVER
DATE: MAY, 1973

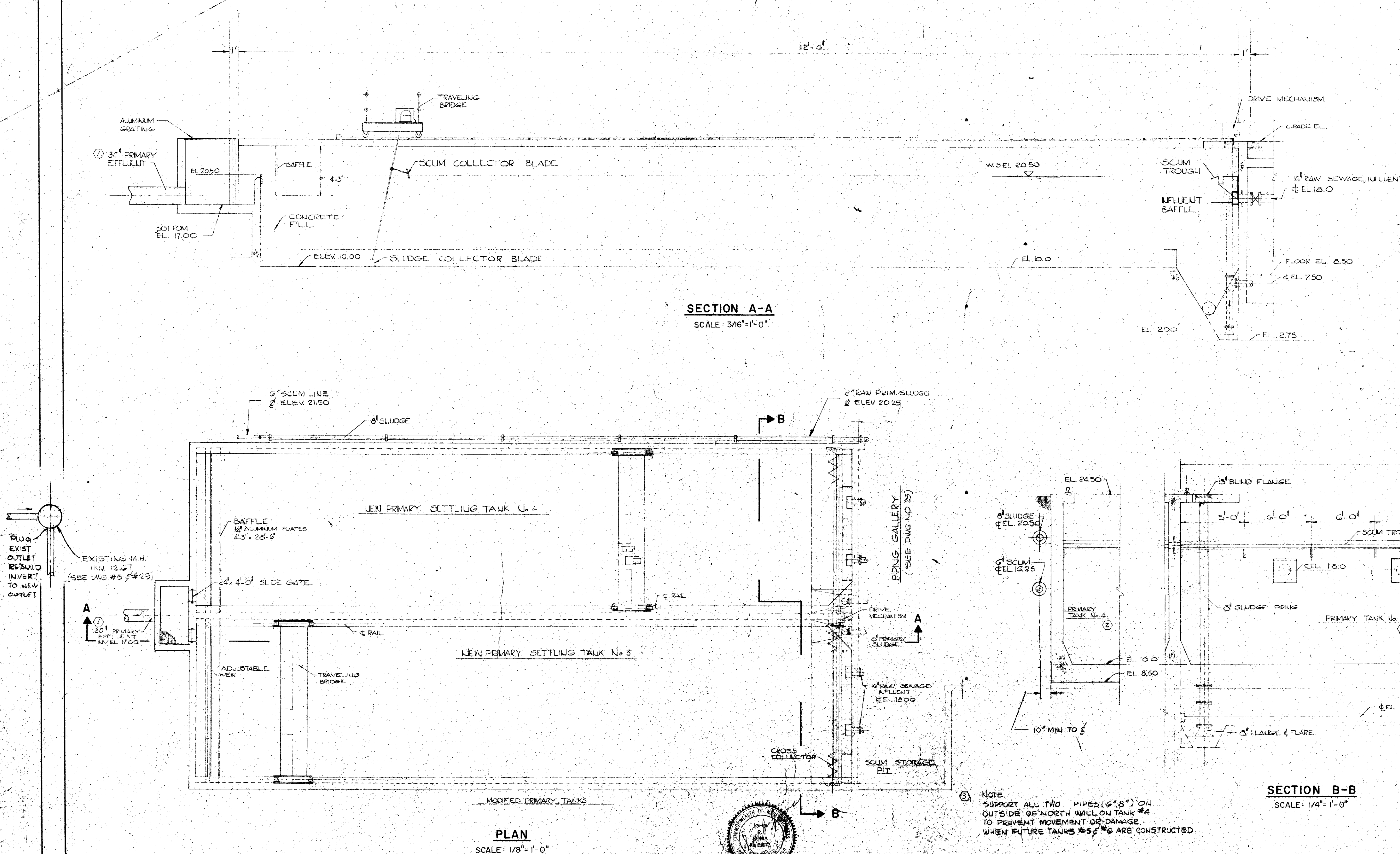
CE MAGUIRE, INC.
ENGINEERS
PROVIDENCE, R.I. WETHERSFIELD, CONN. WALTHAM, MASS.

APPROVED
Valley Engineering
CITY OF EAST PROVIDENCE

CITY OF EAST PROVIDENCE, RHODE ISLAND
SYSTEM OF SEWERS
CONTRACT NO. 1


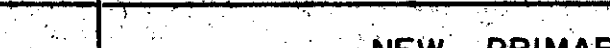
MODIFIED PRIMARY SETTLING TANKS
EQUIPMENT & PIPING
PLAN & SECTIONS

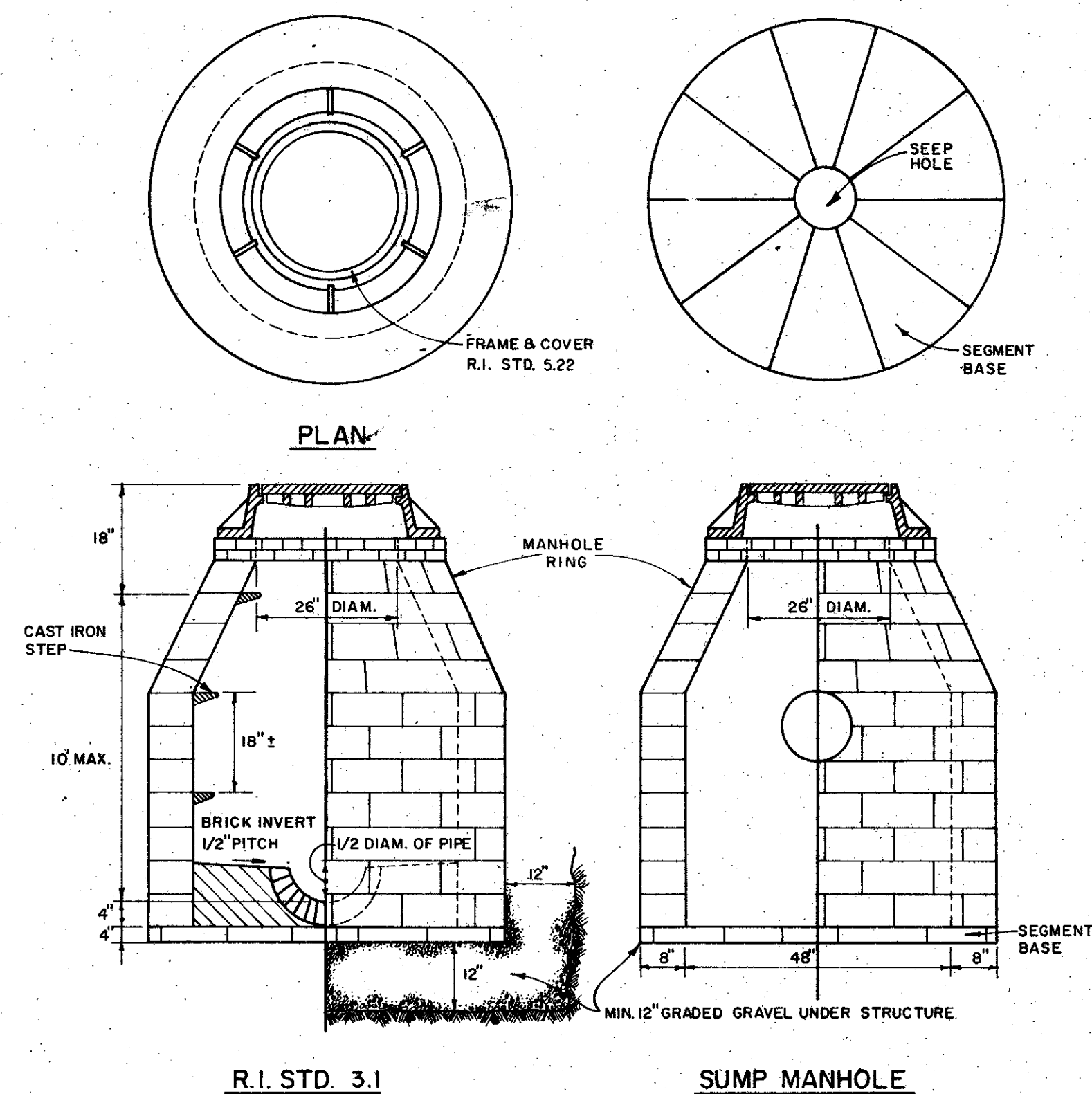
SCALE AS NOTED
C.A.M. No. 1349
DRAWING NO. **25**



- NOTES:
1. FOR REFERENCE SEE STRUCTURAL DWG. NO. 31 AND 32.
 2. FOR MODIFIED PRIMARY TANKS SEE DWG. NO. 27.
 3. SEE YARD PIPING DWG. NO. 10 FOR REFERENCE.
 4. SEE DWGS. NO. 29 AND 30 FOR PIPING GALLERY DETAIL.
 5. FOR WEIR DETAIL SEE DWG. NO. 17.
 6. FOR SCUM TROUGH DETAIL SEE DWG. 25.

NOTE
SUPPORT ALL TWO PIPES (6" & 8") ON OUTSIDE OF NORTH WALL ON TANK #4 TO PREVENT MOVEMENT OR DAMAGE WHEN FUTURE TANKS #5 & #6 ARE CONSTRUCTED.

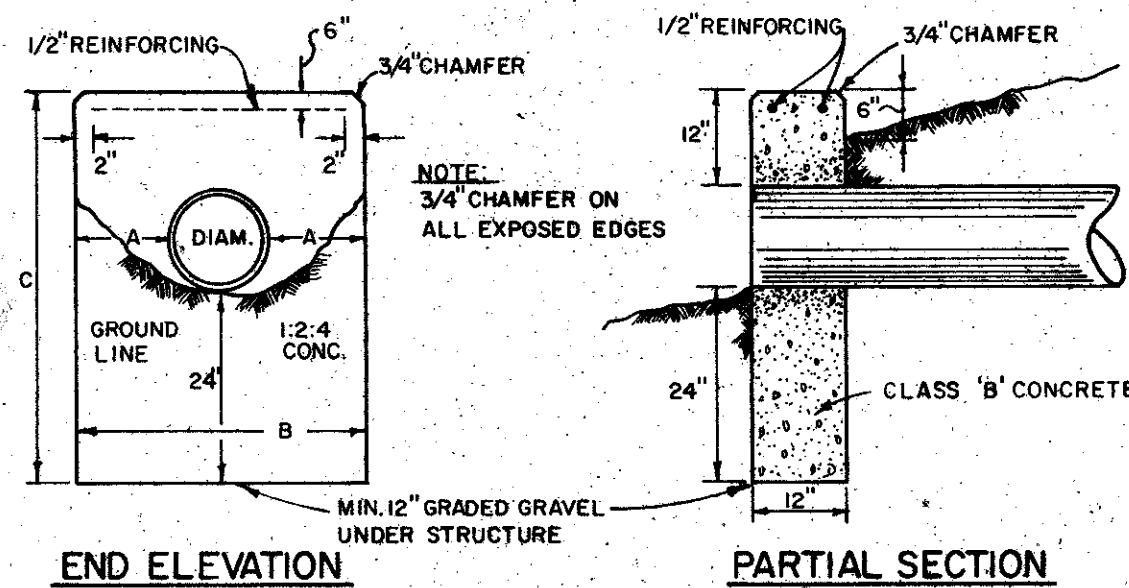
						REVISED TO AS-BUILT	EAT	2-5-73		DRAWN: T. MELLO	DESIGNED: H. CAMPBELL		CITY OF EAST PROVIDENCE, RHODE ISLAND	SCALE AS NOTED			
				①	ADDED NOTE FOR SUPPORT OF PIPE	SAZ	7-25-75	CHECKED: H. CAMPBELL		APPROVED: P. CARVER	CE MAGUIRE, INC. ENGINEERS PROVIDENCE, R.I. WETHERSFIELD, CONN. WALTRAM, MASS.				APPROVED	SYSTEM OF SEWERS CONTRACT NO. 1	DRAWING NO. 28
				②	IN "SECTION B-B CHANGED PRIMARY TANK NP3 TO NP4 & CHANGED PRIMARY TANK NP4 TO NP3 - ADDENDUM NP3	DA	7-19-73										
				③	IN "PLAN F IN SECTION AA" CHANGED 24" PRIMARY EFFLUENT TO 30" - ADDENDUM, NP3	DA	7-19-73										
REVISION NUMBER		DESCRIPTION	INT.	DATE	REVISION NUMBER	DESCRIPTION	INT.	DATE					NEW PRIMARY SETTLING TANKS EQUIPMENT & PIPING PLAN & SECTIONS				



R.I. STD. 3.1

SUMP MANHOLE

MANHOLE BLOCK CONSTRUCTION
NOT TO SCALE



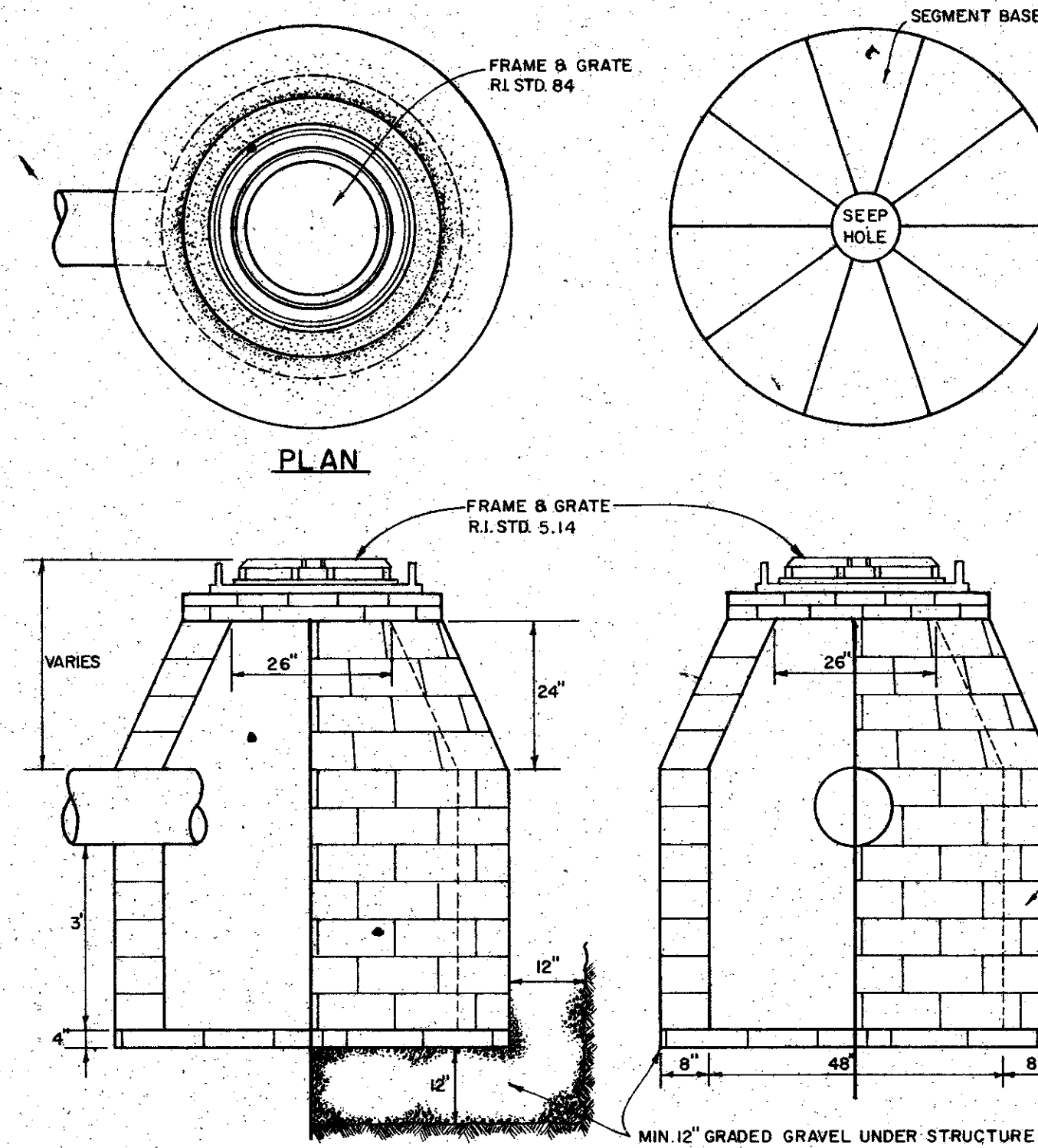
END ELEVATION

PARTIAL SECTION

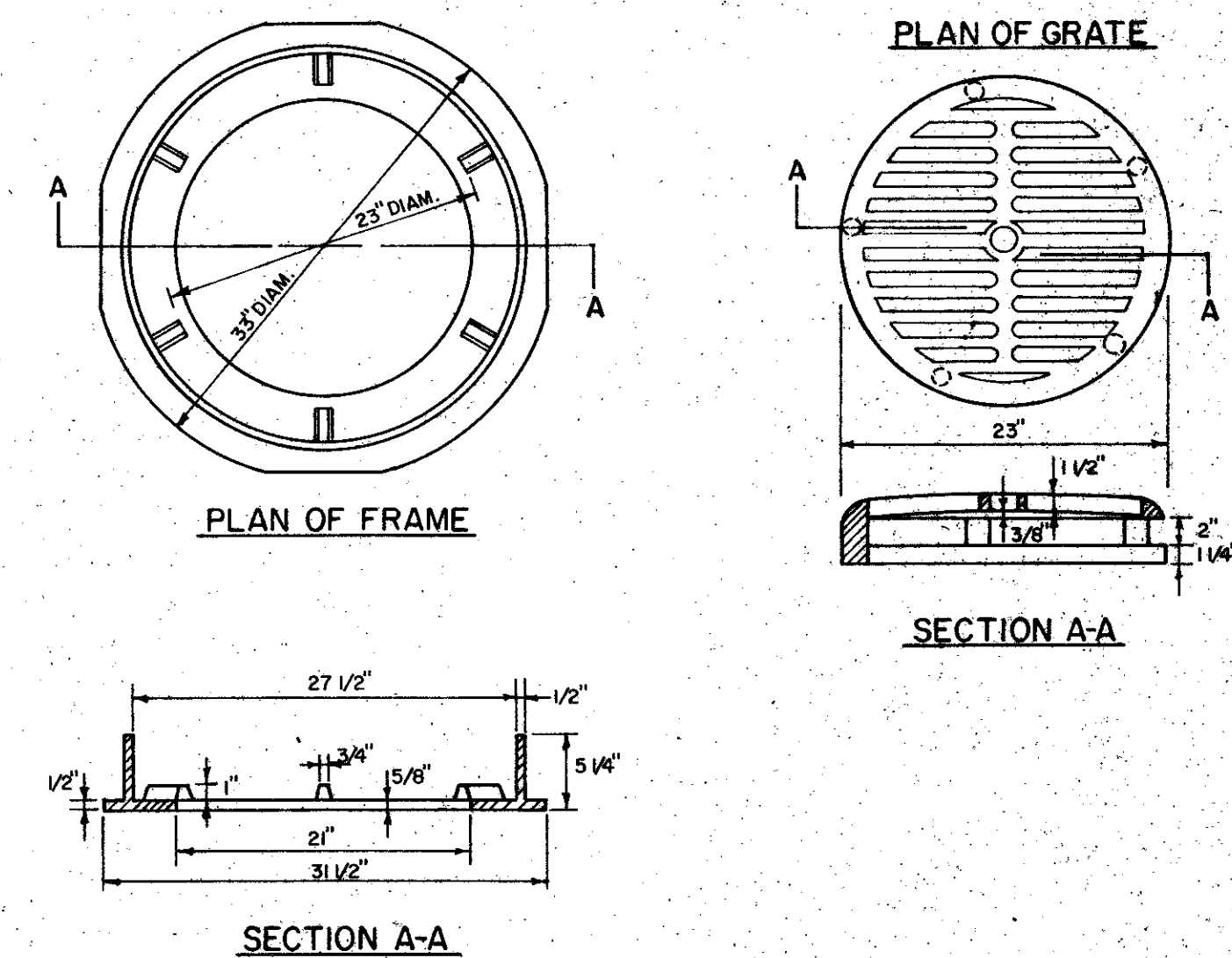
"B" BASED ON 1 1/2:1 SLOPE

DIAM. OF PIPE	A	B	C
8"	0'-8"	2'-0"	3'-8"
12"	1'-0"	3'-0"	4'-0"
15"	1'-3"	3'-6"	4'-3"
18"	1'-6"	4'-0"	4'-6"
24"	2'-0"	6'-0"	5'-0"

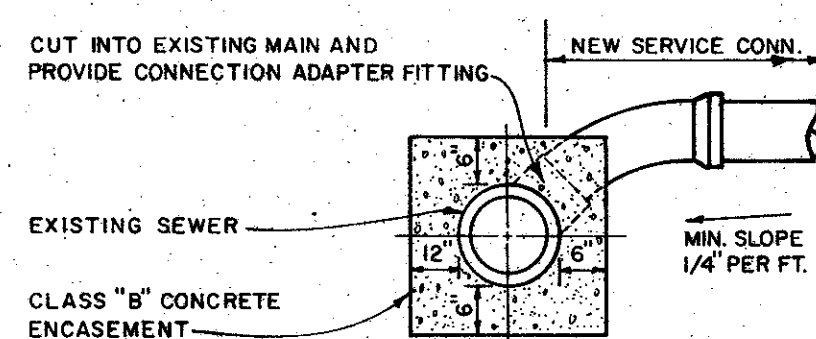
STANDARD HEADWALLS
(R.I. STD. 2.1)
NOT TO SCALE



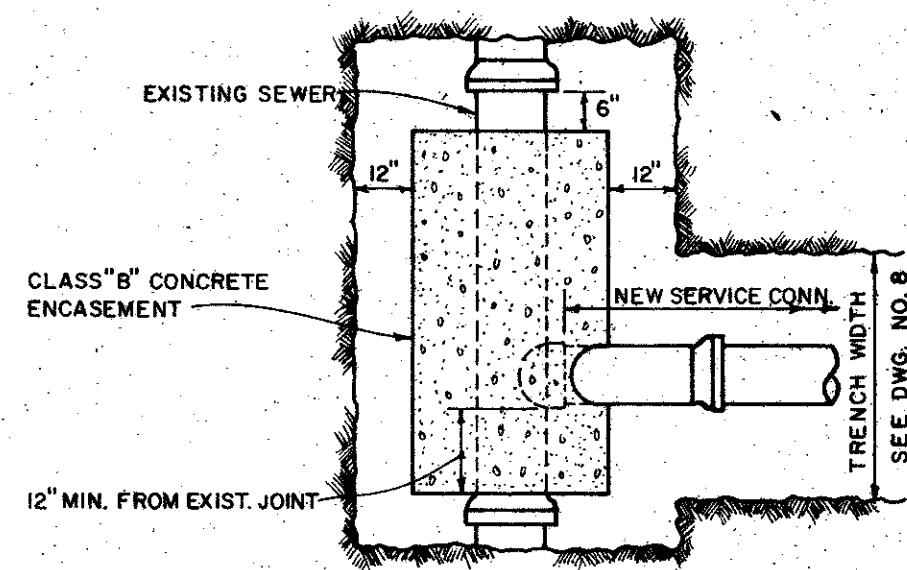
TYPE "F"
ROUND CATCH BASIN
(R.I. STD. 4.3)
NOT TO SCALE



CAST IRON
ROUND FRAME AND GRATE
(R.I. STD. 5.14)
NOT TO SCALE



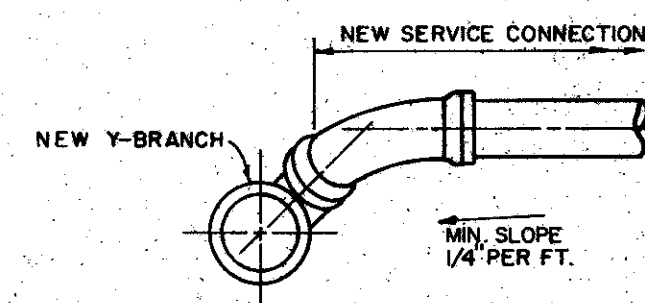
ELEVATION



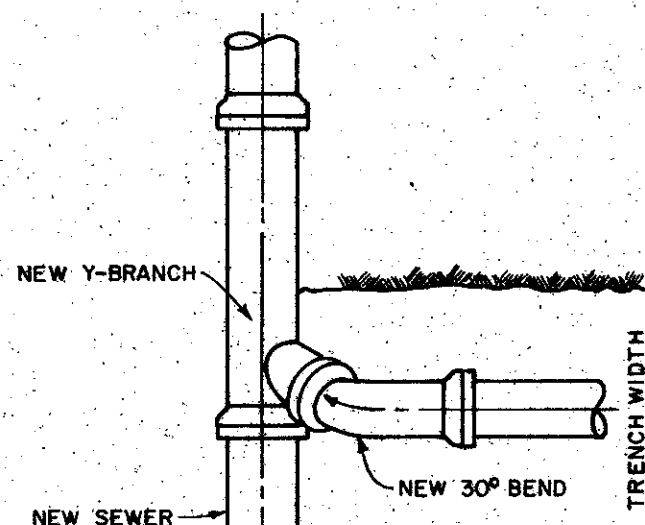
PLAN

NOTE: THE CONTRACTOR SHALL BE RESPONSIBLE FOR PROVIDING TEMPORARY SUPPORTS FOR THE EXISTING PIPING AND FOR PLACING CONCRETE ENCASMENT IN A MANNER AND SEQUENCE TO PREVENT DAMAGE AND/OR DISPLACEMENT OF EXISTING PIPING.

TYPICAL SERVICE CONNECTION CUT-IN
NOT TO SCALE

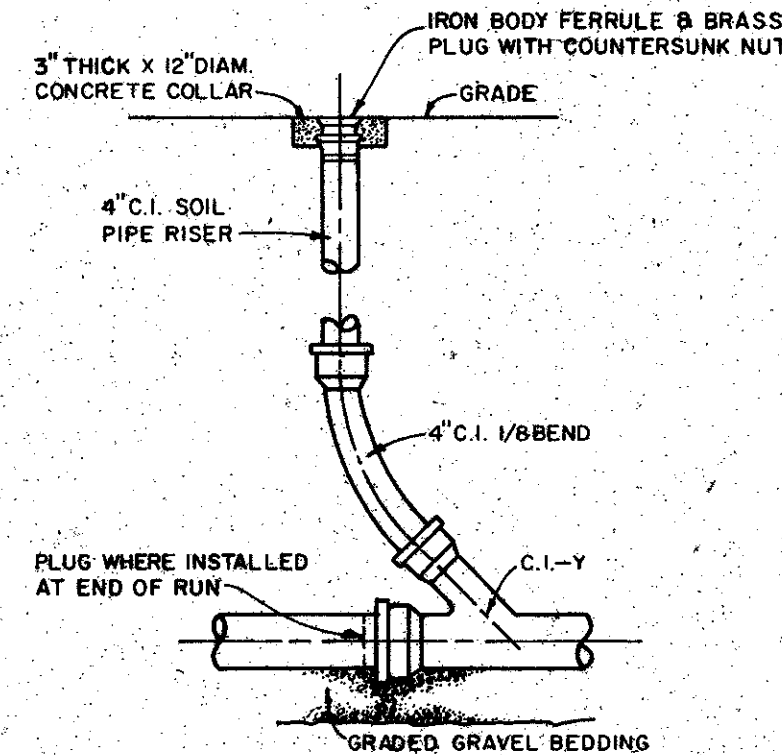


ELEVATION

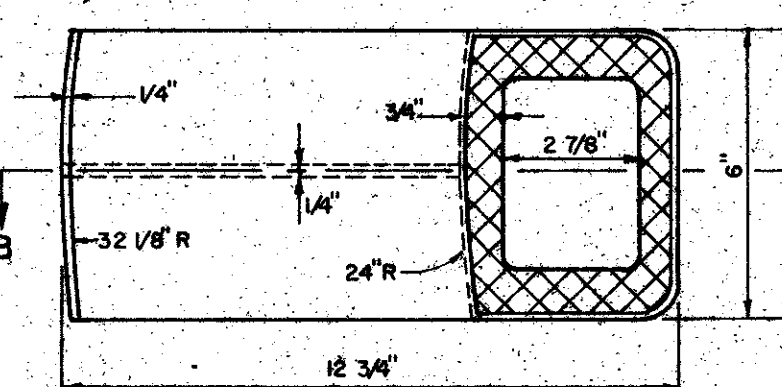


PLAN

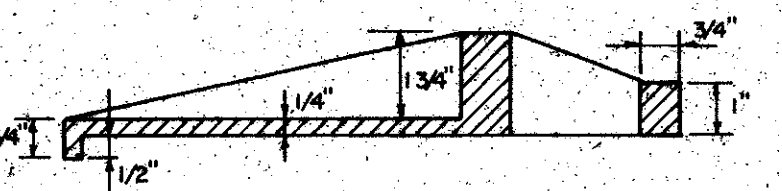
TYPICAL SERVICE CONNECTION
NOT TO SCALE



CLEANOUT DETAIL
NOT TO SCALE

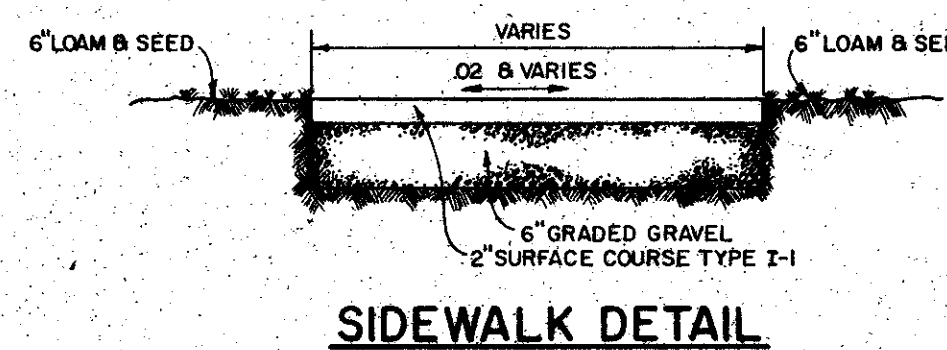


PLAN

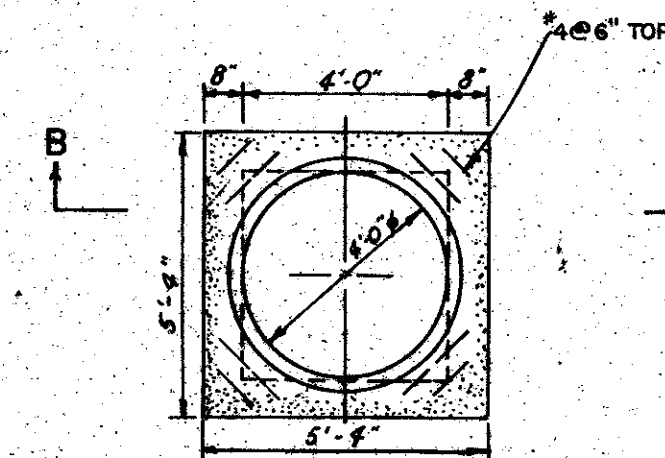


SECTION B-B

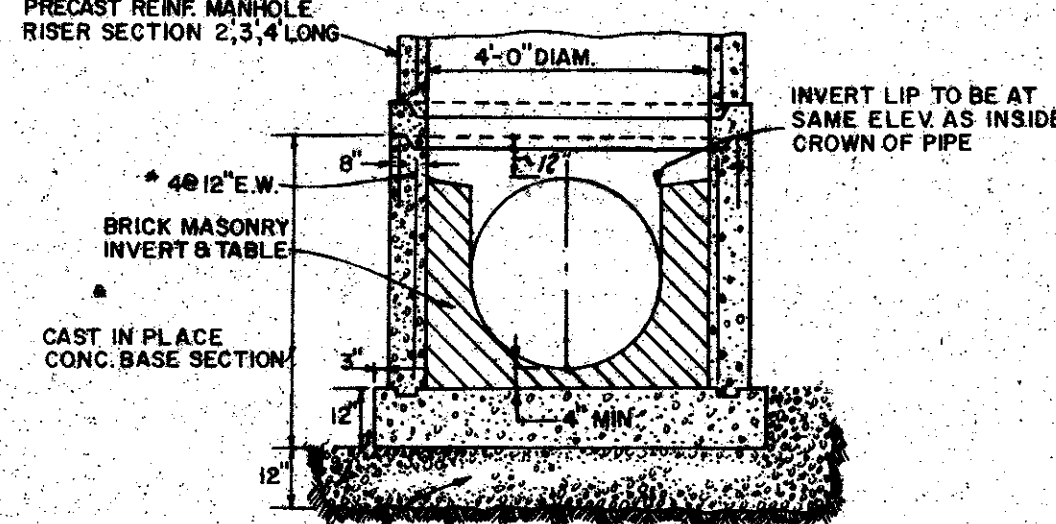
CAST IRON STEP
CATCH BASIN AND MANHOLE
(R.I. STD. 5.31)
NOT TO SCALE



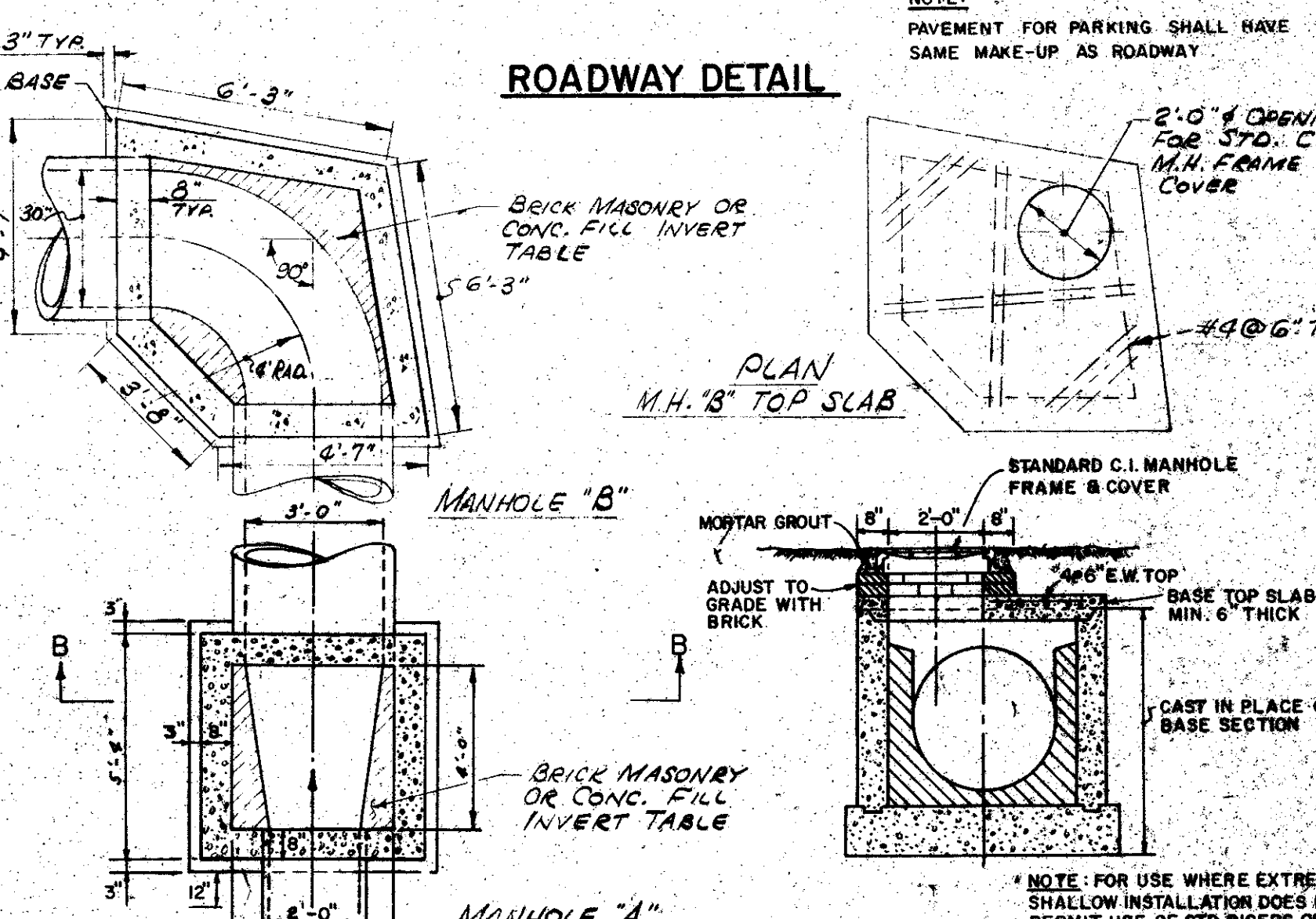
SIDEWALK DETAIL



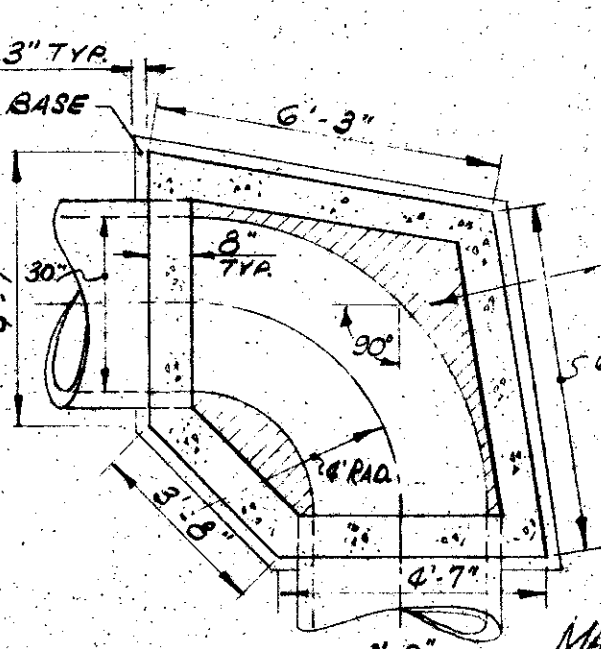
PLAN
BASE TOP SLAB



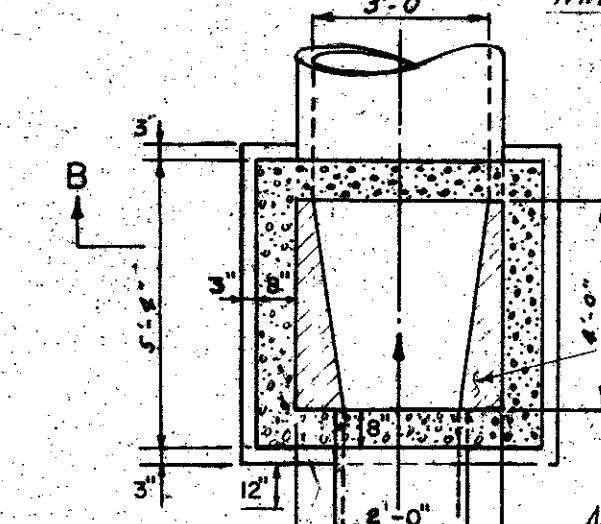
SECTION B-B



ROADWAY DETAIL



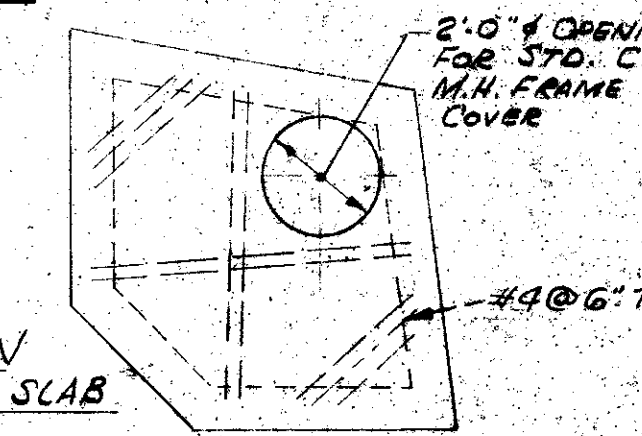
MANHOLE "B"



MANHOLE "A"

PLAN
INVERT TABLE

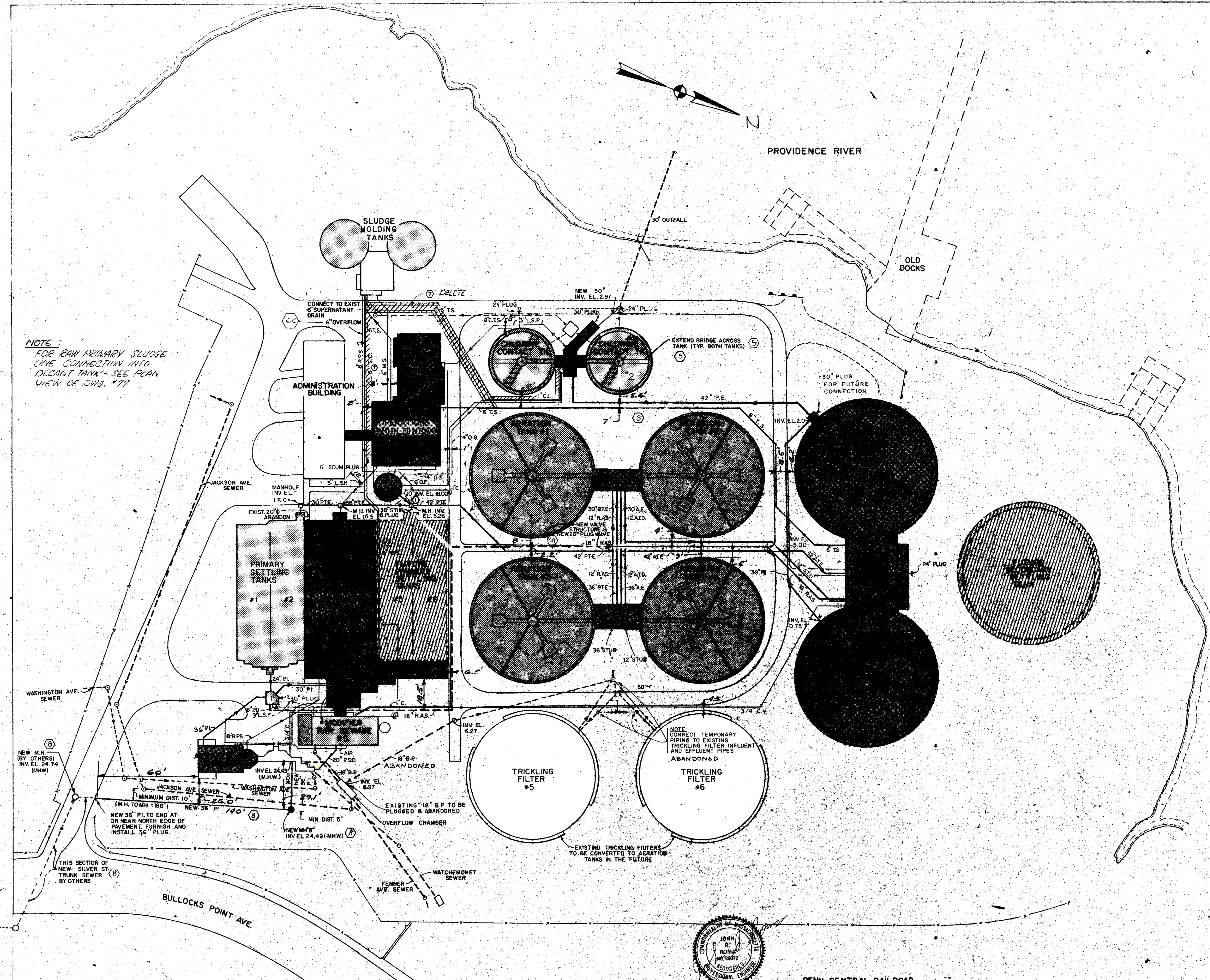
TYPE B MANHOLE
NOT TO SCALE



BASE TOP SLAB
ALTERNATE

NOTE: ALL DIMENSIONS ARE SUBJECT TO CHANGE TO FIT ACTUAL FIELD CONDITIONS.

				REVISED TO AS-BUILT				DRAWN: T. DRURY				DESIGNED: J. TONDREAU			
				REVISED "TYPE B MANHOLE" DETAIL				CHECKED: J. TONDREAU				APPROVED: W. SCHWANER			
				REVISED "TYPE B MANHOLE" DETAIL				DATE: MAY 1973							
								CE MAGUIRE, INC.				APPROVED			
								ENGINEERS				CITY OF EAST PROVIDENCE			
								PROVIDENCE, R.I.				WETHERSFIELD, CONN.			
												CITY OF EAST PROVIDENCE, RHODE ISLAND			
												SYSTEM OF SEWERS			
												CONTRACT NO. 1			
												GENERAL			
												SITE DETAILS NO. 2			
												SCALE			
												AS NOTED			
												C.A.M. NO. 1349			
												DRAWING NO.			
												7			



NOTE:
FOR RAW PRIMARY SLUDGE
LINE CONNECTION INTO
DECANT TANK - SEE PLAN
VIEW OF DWG. #77

- LEGEND**
- EXISTING STRUCTURE TO BE MODIFIED
 - NEW STRUCTURE
 - EXISTING STRUCTURE
 - FUTURE STRUCTURE
 - PROPOSED PIPING
 - PIPING BY OTHERS
 - EXISTING PIPING
 - GATE VALVE
 - P.I. PLANT INFLUENT (R.C.P.)
 - P.S.D. PUMPING STATION DISCHARGE (D.I.)
 - P.T.E. PRIMARY TANK EFFLUENT (D.I.)
 - P.E. PLANT EFFLUENT (R.C.P.)
 - R.A.S. RETURN ACTIVATED SLUDGE (D.I. AND C.I.)
 - A.T.E. AERATION TANK EFFLUENT (D.I.)
 - D.S. DECANTED SLUDGE (C.I.)
 - C.T.S. CHLORINE TANK SOLIDS
 - T.S. THICKENED WASTE ACTIVATED SLUDGE (C.I.)
 - AIR AIR (GALV. STEEL)
 - SC. SCUM (P.V.C.)
 - D.T.E. DECANT TANK EFFLUENT (C.I.)
 - B.P. BY PASS (D.I.)
 - R.P.S. RAW PRIMARY SLUDGE (C.I.)
 - A.T.D. AERATION TANK DRAIN (C.I.)
 - C. CHLORINE (P.V.C.)
 - O.G. OBNOXIOUS GASES (COATED STEEL PIPE)
 - C.R. CHLORINE RESIDUAL (P.V.C.)
 - EXISTING MANHOLE
 - PROPOSED MANHOLE
 - O.F. SLUDGE HOLDING TANK OVERFLOW (C.I.)
 - M.S. MIXED SLUDGE (C.I.)
 - A.E. AERATED EFFLUENT (D.I.)
 - R.S. RAW SLUDGE (C.I.)
 - L.S.P. LIQUID SAMPLER PIPING (C.I.)
 - TEMPORARY PIPING

- NOTES:**
- WHEN NEW PIPE TIES INTO EXISTING PIPE OR EXISTING MANHOLE EXISTING INVERTS SHALL BE VERIFIED BY THE CONTRACTOR PRIOR TO INSTALLATION.
 - ALL STUBS SHALL BE PLUGGED AT THE ENDS EXPOSED TO EARTH R.C.P. - 8" BRICK WITH 3/4" PARGE ON EXTERIOR FACE. C.I.P. - (a) PRESSURE LINES - MECHANICAL JOINT C.I. CAPS OR PLUGS. (b) GRAVITY LINES - STD. CALKED C.I. CAPS OR PLUGS.
 - ALL PIPING IS CAST IRON UNLESS OTHERWISE NOTED.
 - FOR WASH WATER AND FROTH SPRAY SYSTEM SEE DWG. NOS. 15 & 35
 - FOR PLANT SEWER SEE DWG. NO. 4
 - SEE EXISTING CONTRACT DWGS., DATED FEB. 1954, FOR EXISTING PIPING & UTILITIES.
 - FOR DETAILS OF EXISTING OVERFLOW CHAMBER SEE DWG. NO. 77
 - DATUM - CITY OF EAST PROVIDENCE, R.I. MEAN HIGH WATER EL. = 0.00
 - HURRICANE HIGH TIDE SEPT. 21, 1938 EL. 15.70
 - FOR LOCATION AND ELEVATION OF PIPING AT TANKS AND BUILDINGS REFER TO RESPECTIVE EQUIPMENT AND SHOP OR SETTING DRAWINGS.

REVISED TO AS-BUILT				BRT 2-5-79			
⑧	RELOCATED, REDESIGNED SILVER ST. TRUNK SEWER M.H. "B" ELIMINATED 24" V.C. PIPE & MANHOLE "A"	J.Z.	12-19-75	④	REINSTATED M.H. "B" IN NEW LOCATION	OH	3-25-79
⑦	DELETED PORTION OF 6" T.S. AND 6" S.C. TO DIGESTERS	J.Z.	12-5-74	③	ADDED ADDITIONAL TEMPORARY PIPING	J.E.	9-8-74
⑥	2. STRUCTURE AND VALVE TO REVISED 18" RAS 3. ADDED 18" RAS PRIMARY DRAIN 6. ADDED 6" OVERFLOW FROM DIGESTERS TO M.H. #3	J.Z.	11-3-74	②	RELOCATED SILVER ST. TRUNK SEWER, ADDED 24" P.I. 1" ADDED NEW INLET STRUCTURE IN PLACE OF M.H. "B"	OH	11-26-73
⑤	EXTENDED BRIDGE ACROSS CHLORINE CONTACT TANK 6. DRAUGHTS 4" D.G. FROM SLUDGE HOLDING TANKS TO CL. TANK	J.Z.	11-13-74	①	ADDED 10" DECANT TANK OVERFLOW INVERT EL. 18.0' CHANGED PRIMARY TANKS #4 & EFFLUENT MANHOLE INVERT FROM 18.5 TO 16.5	OH	10-18-73
REVISION NUMBER	DESCRIPTION	INT.	DATE	REVISION NUMBER	DESCRIPTION	INT.	DATE

PAUL T. CARVER
REGISTERED PROFESSIONAL ENGINEER

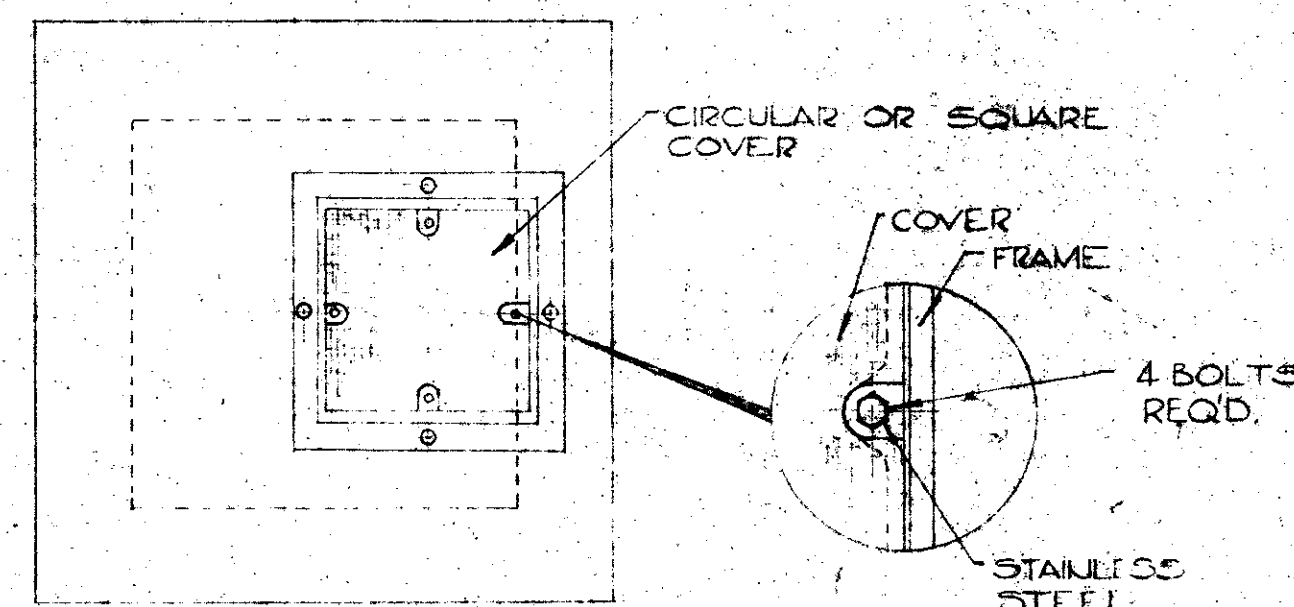
CE MAGUIRE, INC.
ENGINEERS

PROVIDENCE, R.I. WETHERSFIELD, CONN. WALTHAM, MASS.

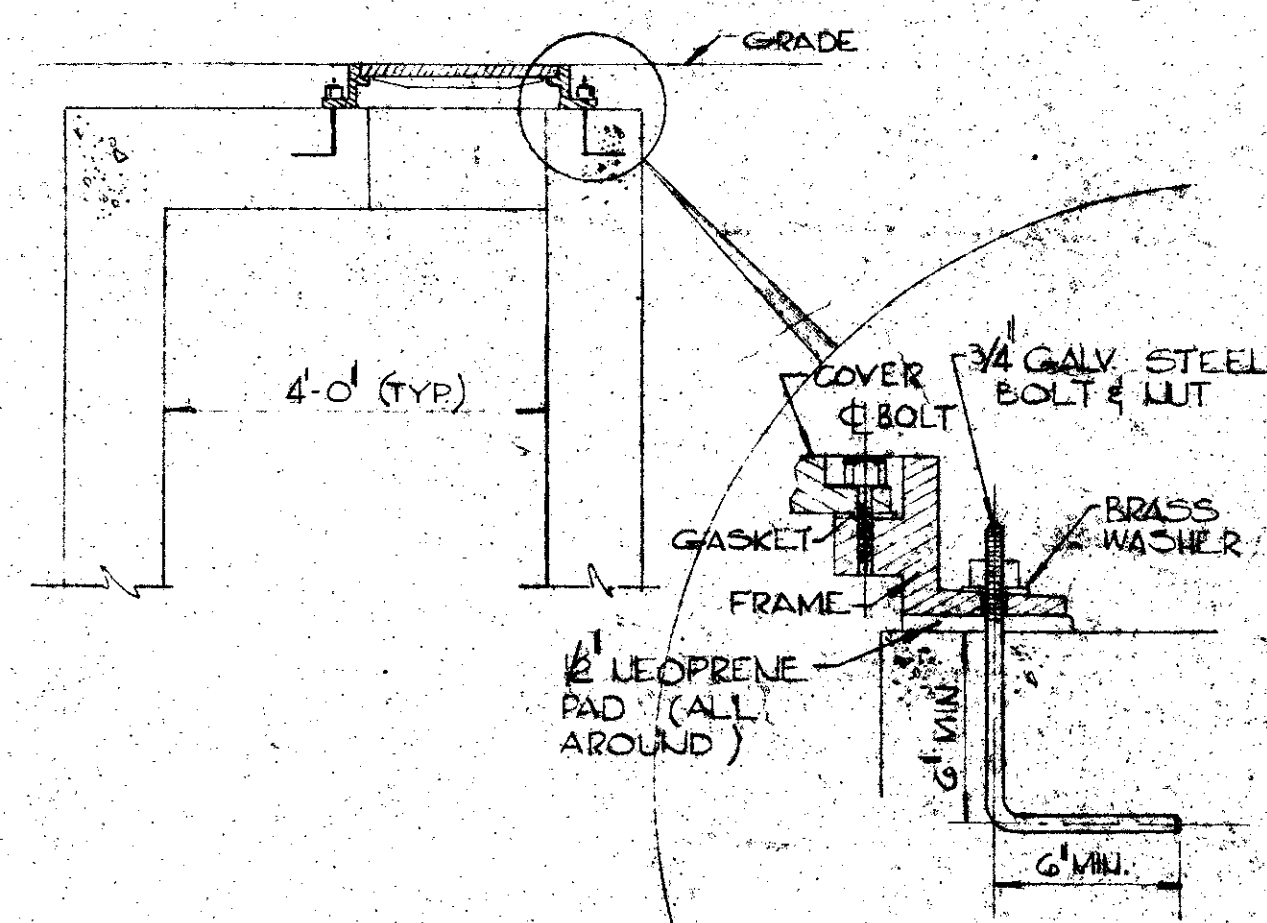
APPROVED

Paul T. Carver
CITY OF EAST PROVIDENCE

CITY OF EAST PROVIDENCE, RHODE ISLAND SYSTEM OF SEWERS CONTRACT NO. 1 GENERAL YARD PIPING	SCALE 1" = 40' C.A.M. NO. 1349 DRAWING NO. 10
---	--



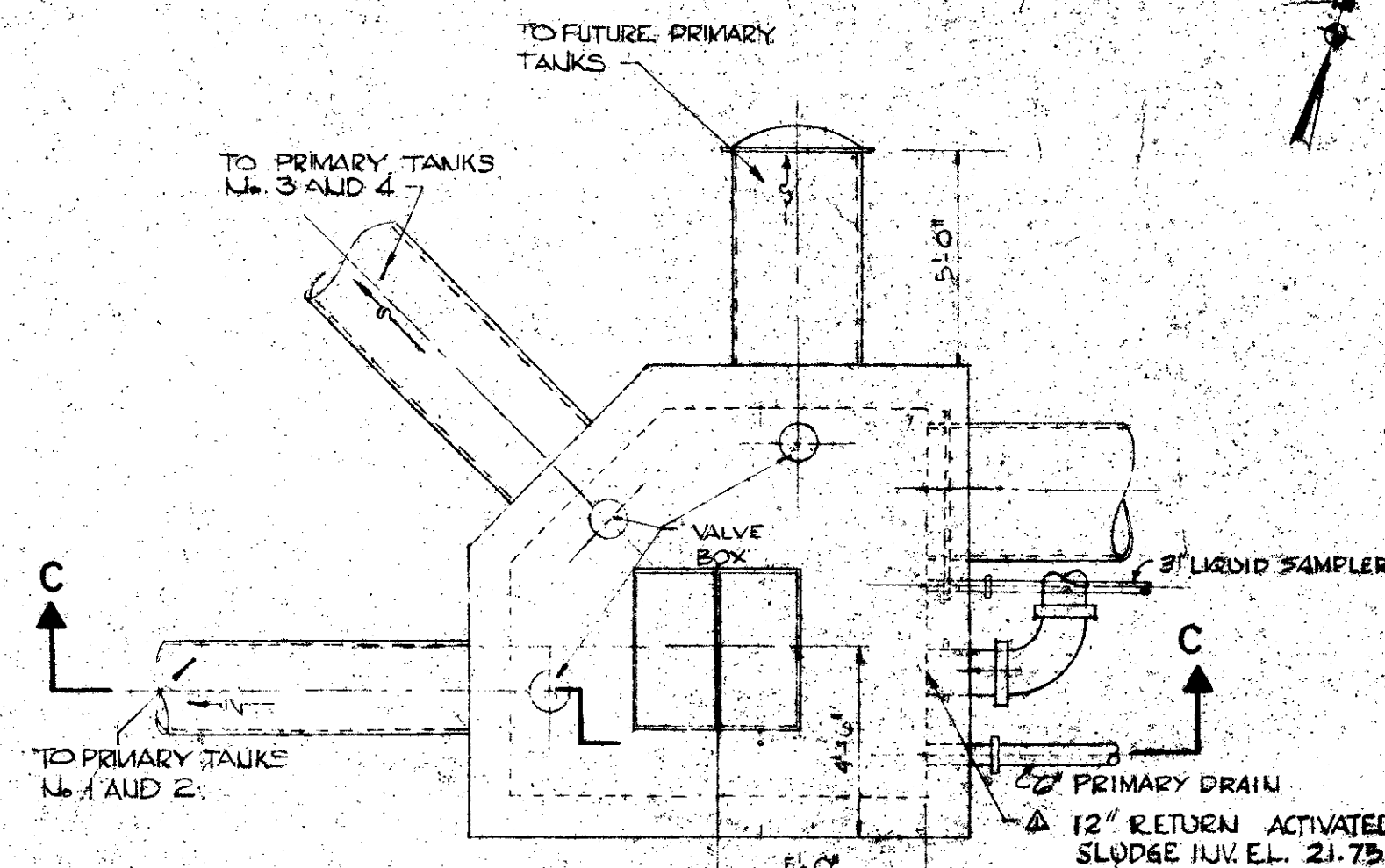
PLAN



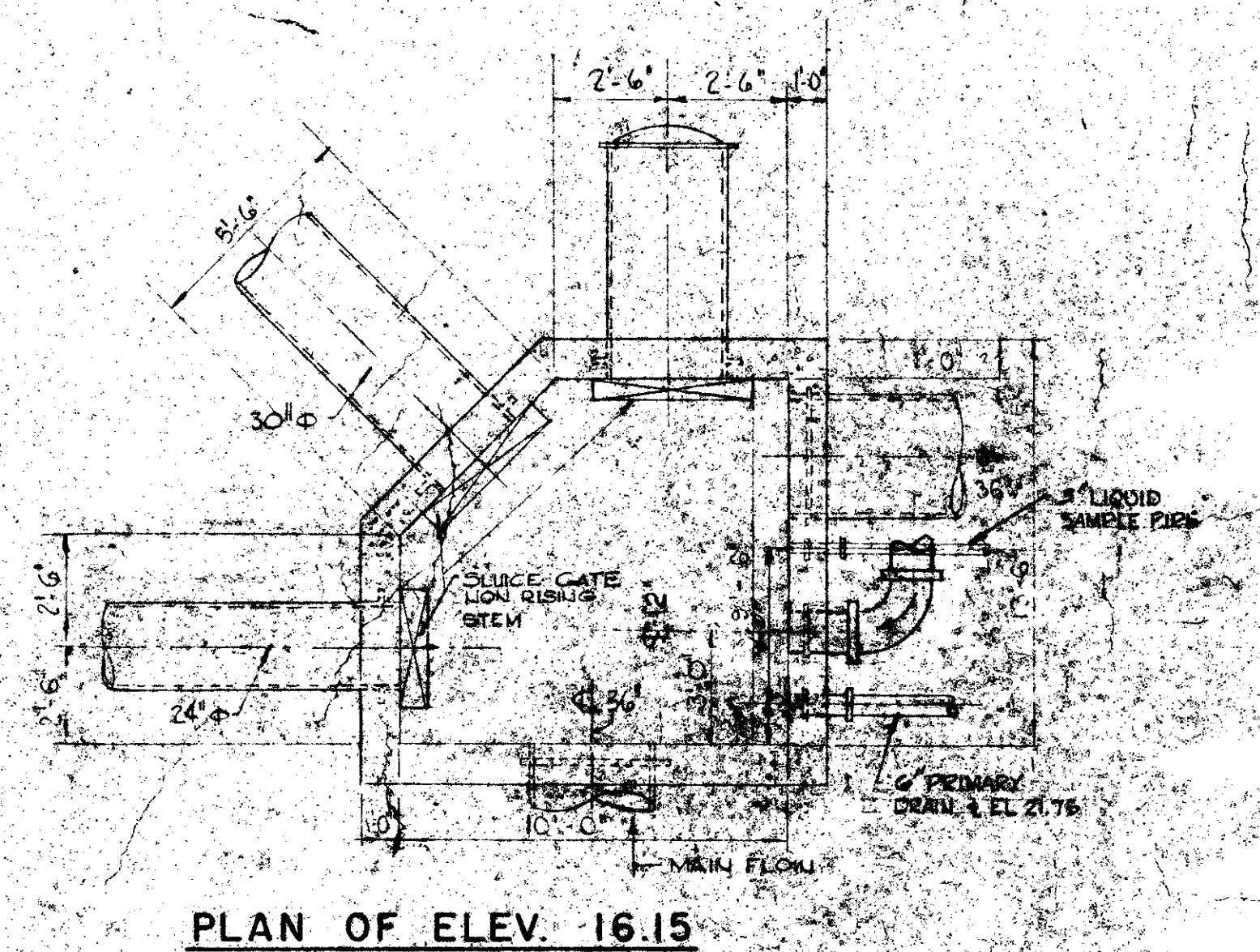
WATERTIGHT MANHOLE

COVER DETAIL
FOR PRESSURE SEWERS

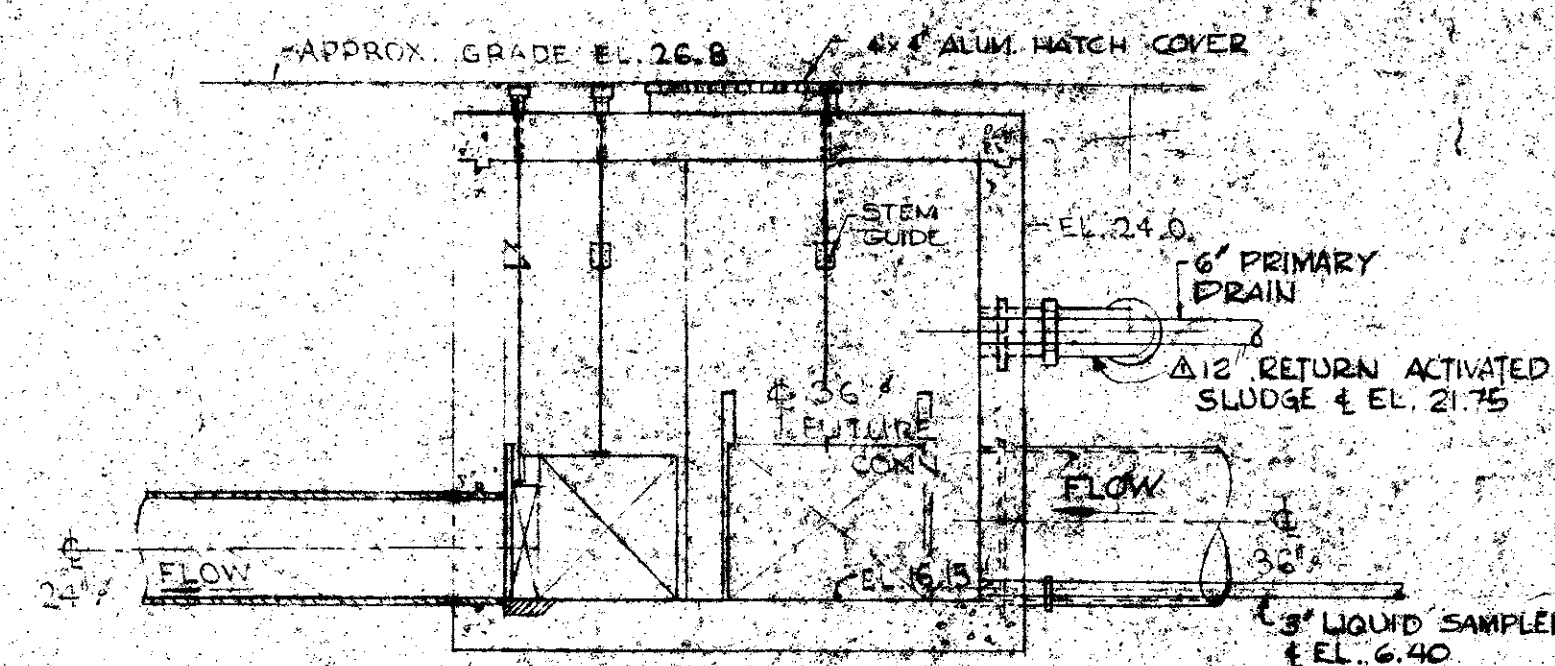
NOTE: FOR REFERENCE SEE DWG. 10 FOR
LOCATION OF MANHOLES.



PLAN

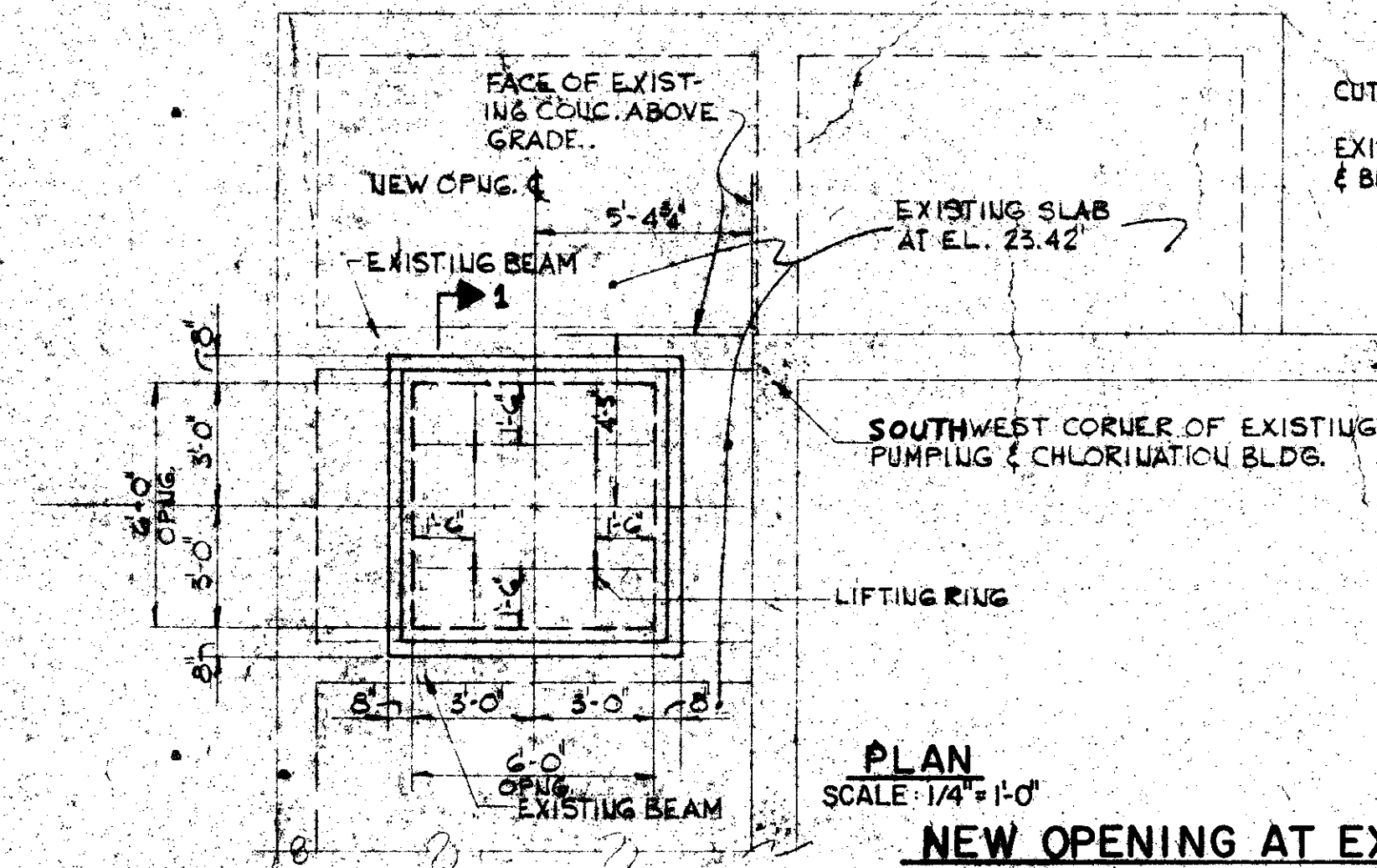
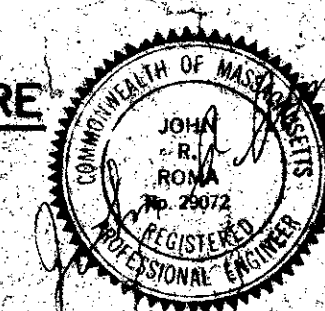


PLAN OF ELEV. 16.15



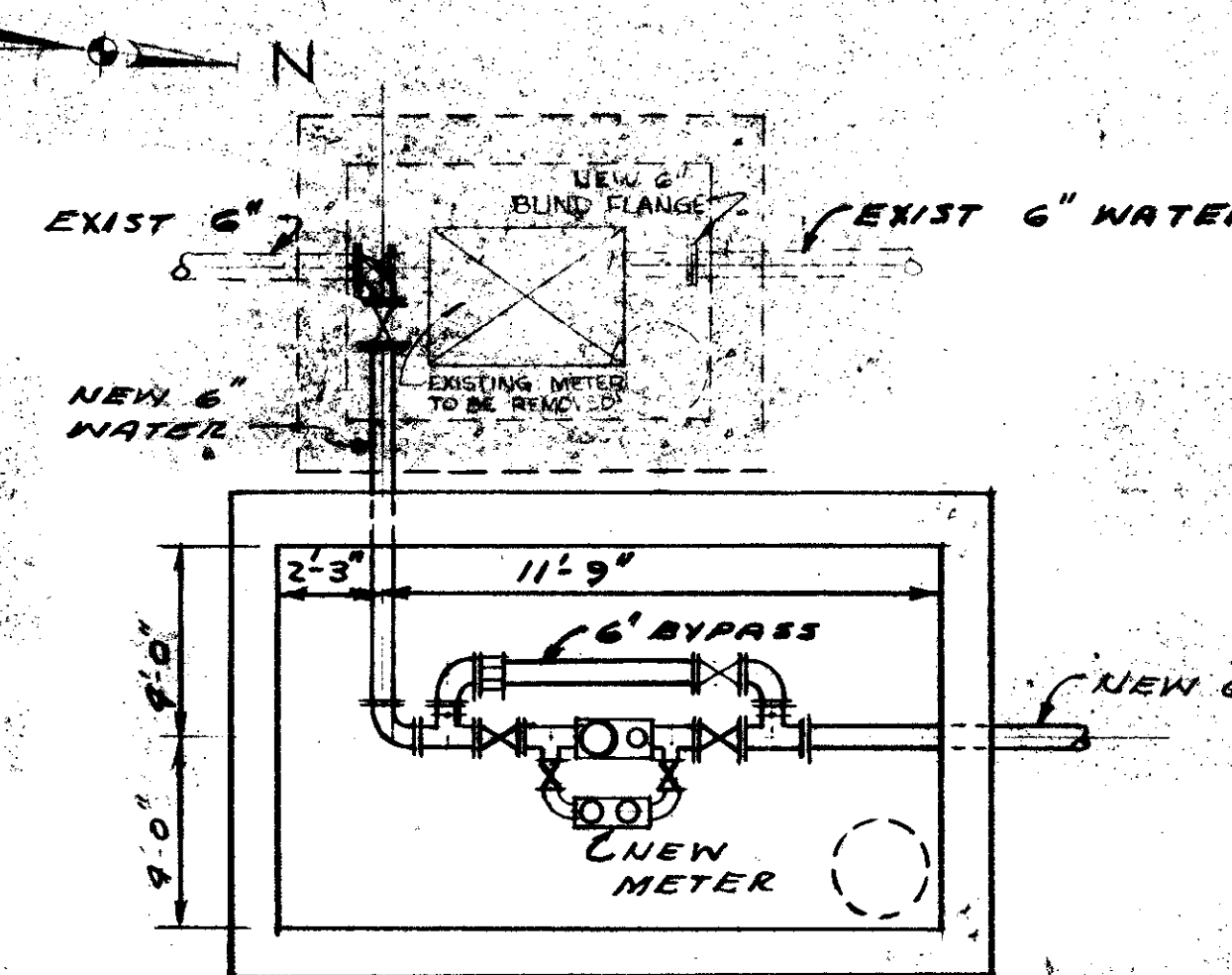
SECTION C-C

SPLITTER-BOX STRUCTURE
MH NO. 1

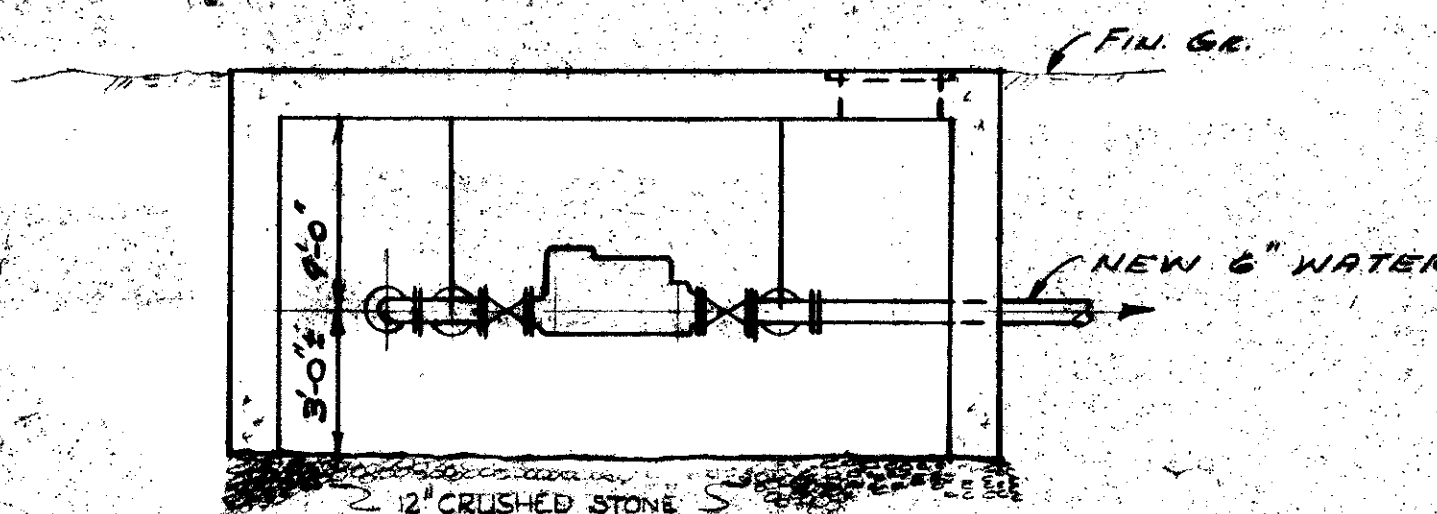


PLAN
SCALE: 1/4" = 1'-0"

NEW OPENING AT EXISTING PUMPING & CHLORINATION BLDG.

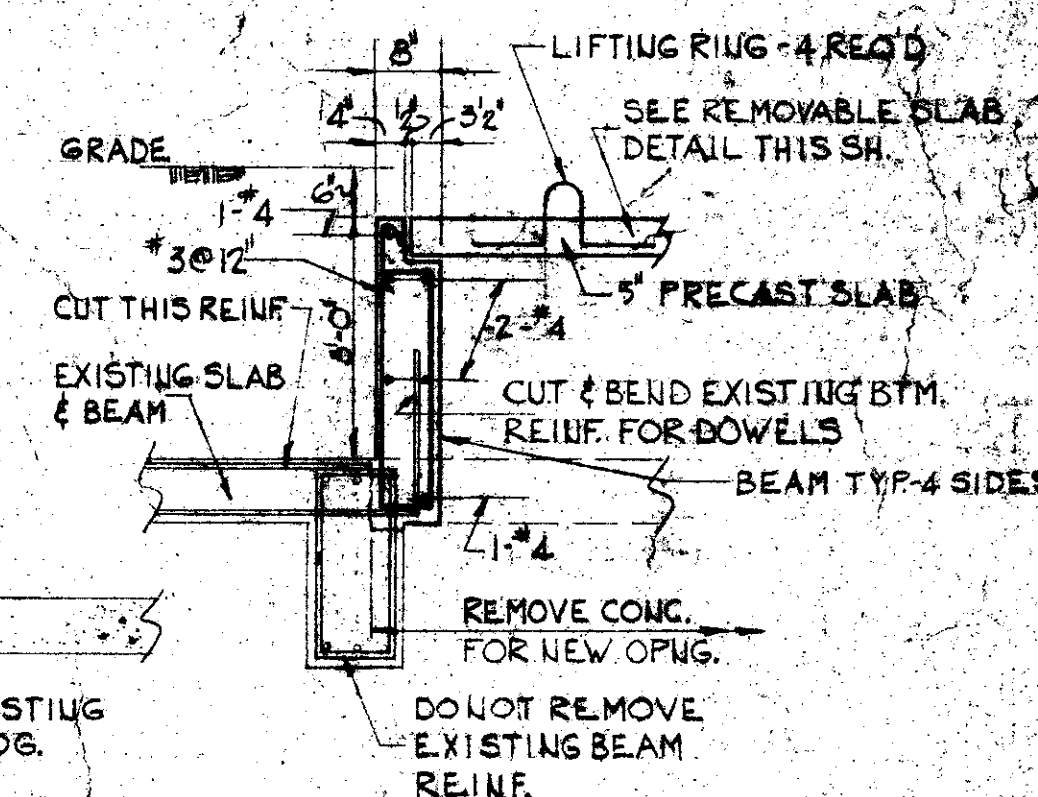


PLAN

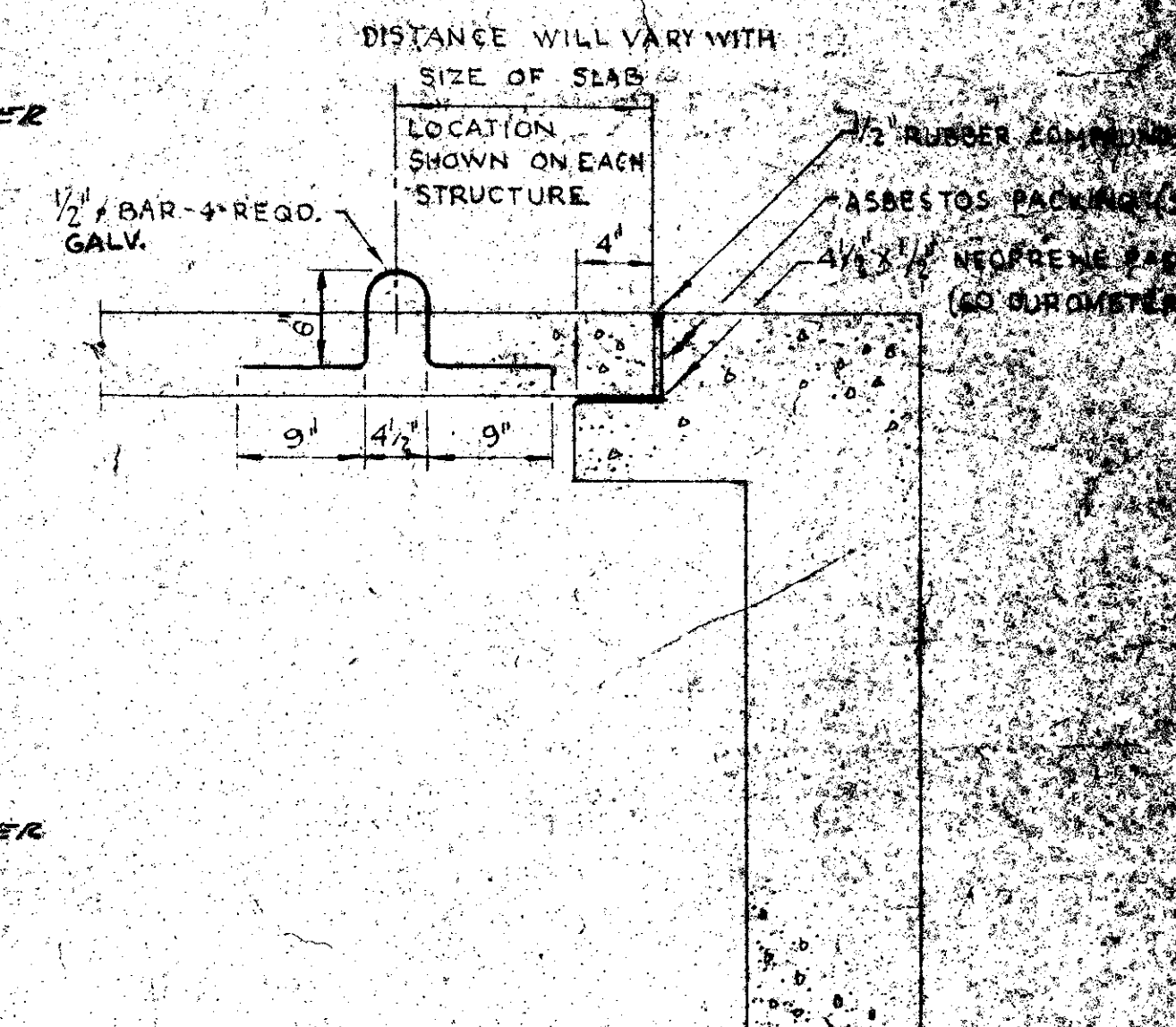


ELEV.

NEW WATER METER INSTALLATION



SECTION 1-1
SCALE: 1/2" = 1'-0"



REMOVABLE SLAB DETAIL

SCALE: 1" = 1'-0"

REVISION NUMBER	DESCRIPTION	INT.	DATE	REVISION NUMBER	DESCRIPTION	INT.	DATE	<div data-bbox="1370 1669 1513 1806" data-label="Image"> </div>	DRAWN: C. BERGSEN DESIGNED: J. KEANEY CHECKED: J. KEANEY APPROVED: P. CARVER DATE: MAY, 1978 CE MAGUIRE, INC. ENGINEERS PROVIDENCE, R.I. WETHERFIELD, CONN. WILTHAM, MASS.	APPROVED: <i>Paul T. Carver</i> CITY OF EAST PROVIDENCE	CITY OF EAST PROVIDENCE, RHODE ISLAND SYSTEM OF SEWERS CONTRACT NO. 1 GENERAL MISCELLANEOUS STRUCTURES	SCALE: 1/4" = 1'-0" C.A.M. NO. 1365 DRAWING NO. 15
					CHANGED 16" WASTED RETURN ACTIVATED SLUDGE INV. EL. 20.40 TO 12" RETURN ACTIVATED SLUDGE @ INV. EL. 20.40 ADD NEW 6" PRIMARY DRAIN PIPE, EL. 21.75		10-20-74					
					REVISED TO AS-BUILT		2-5-79					