

2023 CITY ROADWAY IMPROVEMENTS

APPENDIX G

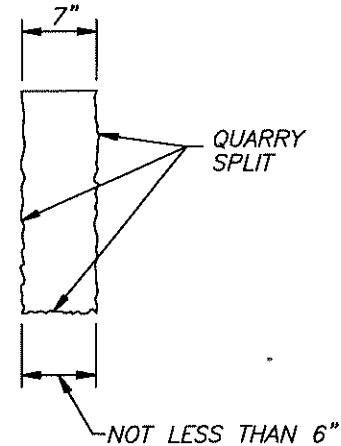
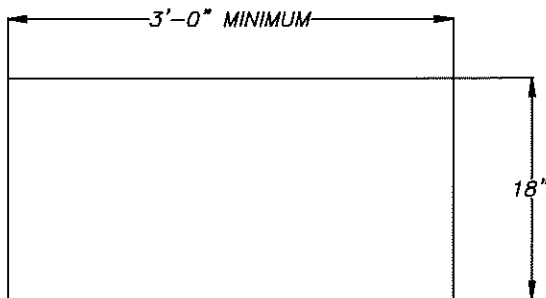
- A. Granite Curb Quarry Split
East Providence Standard R-31A
- B. Granite Curb-Quarry Split Inlet Stone
East Providence Standard R-33
- C. Wheelchair Ramp Detail
East Providence Standard R-63, R-64B and R-64A
- D. Sidewalk Detail
East Providence Standard R-65
- E. Roadway Detail
East Providence Standard R-51
- F. Square Frame & Grate
East Providence Standard C-52
- G. Sanitary Frame & Cover Detail C-59
- H. Bituminous Berm R-22A
- I. Typical Road Striping R-71B & R-71C
- J. Pre-cast Catch Basin
East Providence Standard C-07
- K. Trench Detail T-05
- L. Manhole Detail C-35
- M. Heavy Duty Precast Dry Well C-23



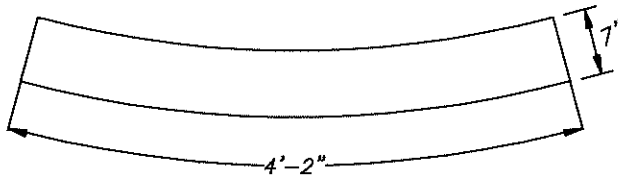
**CITY OF EAST PROVIDENCE
DEPARTMENT OF PUBLIC WORKS
ENGINEERING DIVISION
STANDARD DETAIL**



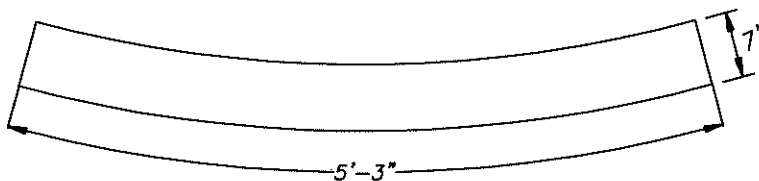
GRANITE CURB QUARRY SPLIT



CIRCULAR CURB



8' RADIUS



10' RADIUS

NOTES

1. MAXIMUM LENGTHS USING 8' & 10' RADII, WITH 90° ANGLE, ARE 4'-2" AND 5'-3" RESPECTIVELY.
2. MINIMUM LENGTH OF STRAIGHT OR CIRCULAR FILLER PIECES TO BE 3'-0"
3. TOP SURFACE TO BE DRESSED BY SAW.
4. CIRCULAR CURB IS REQUIRED ON CURVES WITH RADII OF 160' OR LESS. STRAIGHT CURB TO BE USED CURVES OF MORE THEN 160' RADIUS

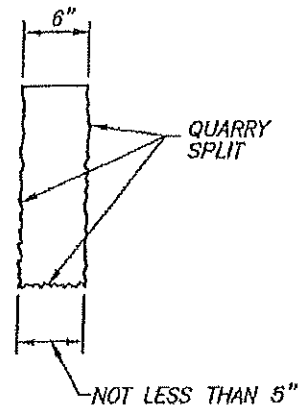
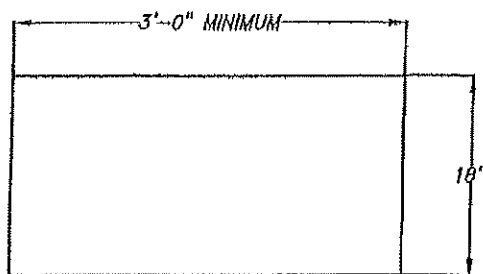
REV. BY	DATE	REV. BY	DATE	DRAWN BY: KAREN LANOUE	DATE: 7/24/01
				APPROVED BY: STEPHEN H. COUTU, P.E.	DATE: 7/24/01
				CITY ENGINEER/DEPUTY D.P.W.	SCALE: NTS



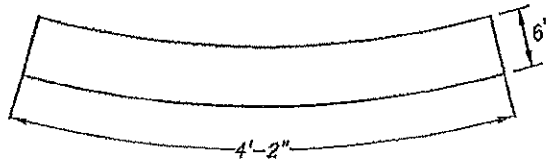
CITY OF EAST PROVIDENCE
DEPARTMENT OF PUBLIC WORKS
ENGINEERING DIVISION
STANDARD DETAIL



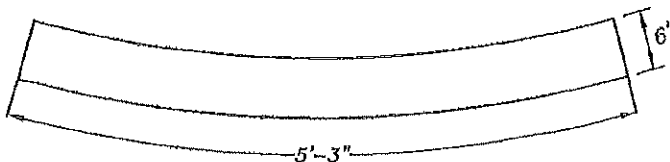
GRANITE CURB QUARRY SPLIT
(FOR SUBDIVISIONS ONLY)



CIRCULAR CURB



8' RADIUS



10' RADIUS

NOTES

1. MAXIMUM LENGTHS USING 8' & 10' RADII, WITH 90° ANGLE, ARE 4'-2" AND 5'-3" RESPECTIVELY.
2. MINIMUM LENGTH OF STRAIGHT OR CIRCULAR FILLER PIECES TO BE 3'-0"
3. TOP SURFACE TO BE DRESSED BY SAW.
4. CIRCULAR CURB IS REQUIRED ON CURVES WITH RADII OF 160' OR LESS. STRAIGHT CURB TO BE USED CURVES OF MORE THEN 160' RADIUS

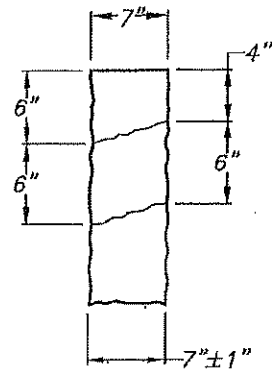
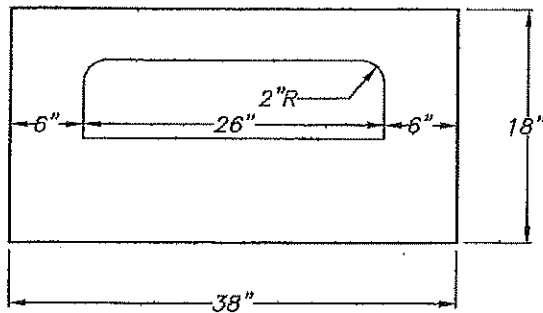
REV. BY	DATE	REV. BY	DATE	DRAWN BY: KAREN LANOUE	DATE: 8/2/99
K.L.L.	7/25/01			APPROVED BY: STEPHEN H. COUTU, P.E. CITY ENGINEER/DEPUTY D.P.W.	DATE: 8/2/99
					SCALE: NTS



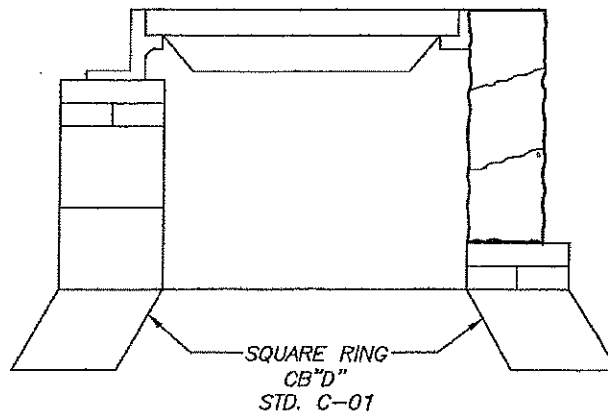
**CITY OF EAST PROVIDENCE
DEPARTMENT OF PUBLIC WORKS
ENGINEERING DIVISION
STANDARD DETAIL**



**GRANITE CURB-QUARRY SPLIT
INLET STONE**



NOTE:
TOP SURFACE TO BE DRESSED
BY SAW REMAINDER TO BE
QUARRY SPLIT.



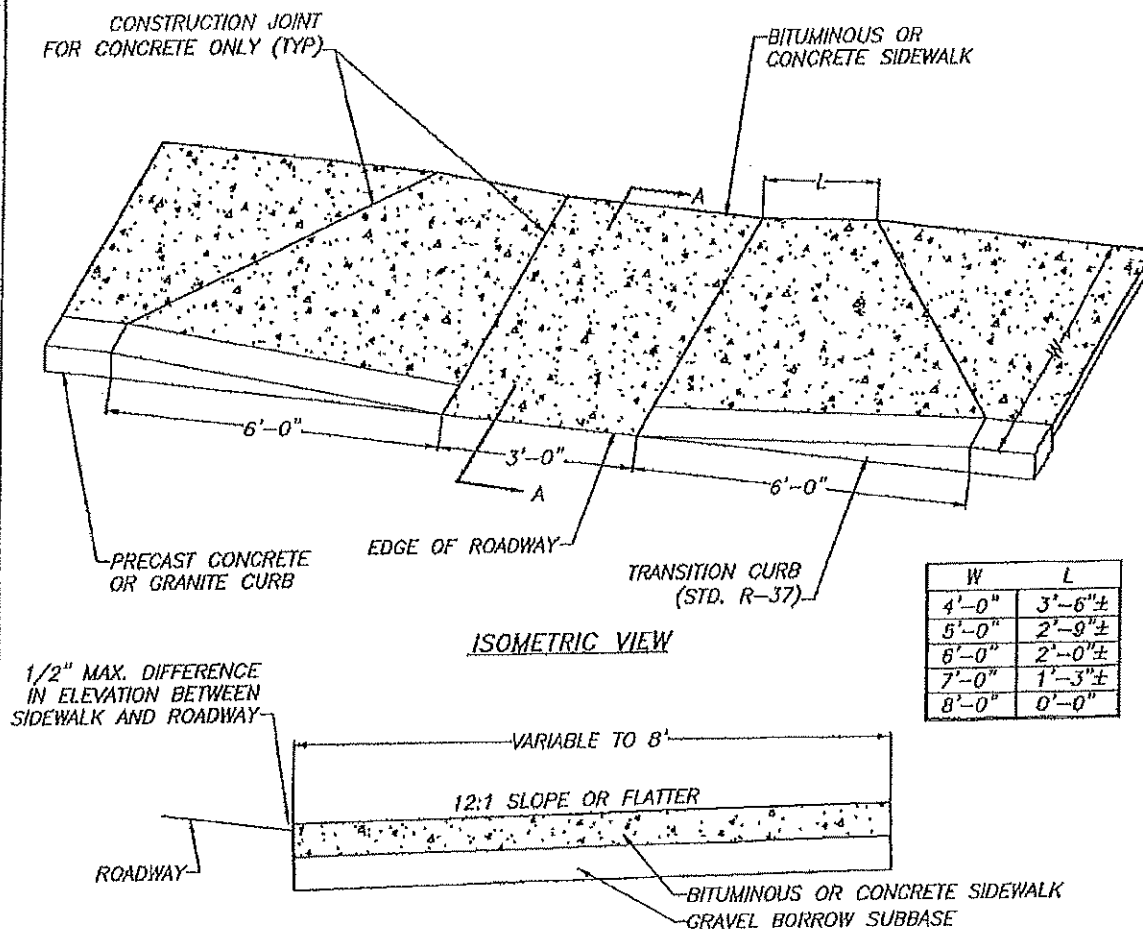
REV. BY	DATE	REV. BY	DATE	DRAWN BY: KAREN LANOUE	DATE: 7/20/99
K.L.L.	7/25/01			APPROVED BY: STEPHEN H. COUTU, P.E. CITY ENGINEER/DEPUTY D.P.W.	DATE:
					SCALE: NTS



**CITY OF EAST PROVIDENCE
DEPARTMENT OF PUBLIC WORKS
ENGINEERING DIVISION
STANDARD DETAIL**



WHEELCHAIR RAMP



ISOMETRIC VIEW

SECTION A-A

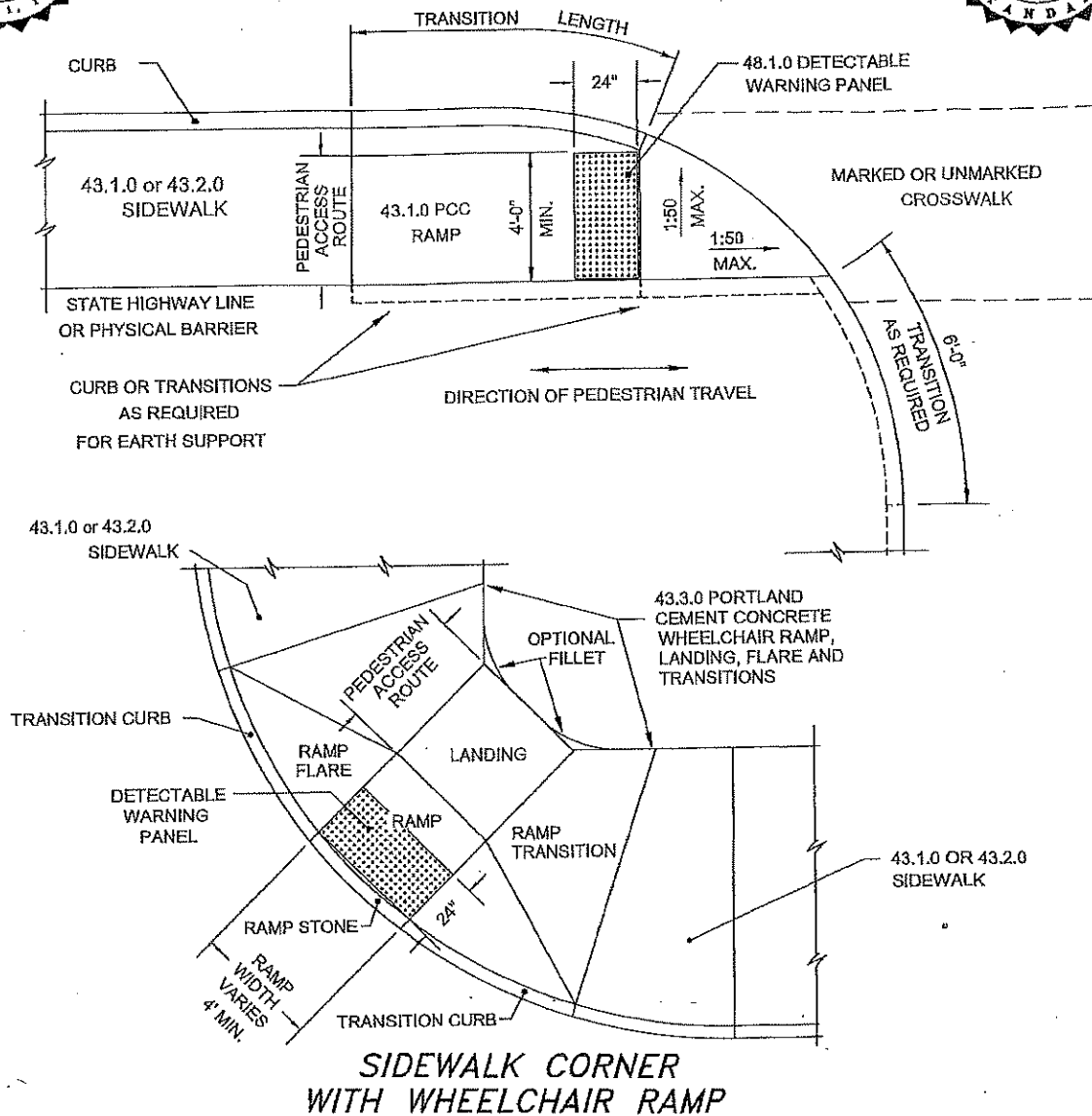
NOTES:

1. WHEN A UTILITY POLE LOCATED IN THE SIDEWALK FALLS WITHIN A CROSSWALK AREA, THE WHEELCHAIR RAMP WILL BE PLACED SUCH THAT THE POLE FALLS OUTSIDE THE RAMP.
2. AT NO TIME IS ANY PART OF THE WHEELCHAIR RAMP TO BE LOCATED OUTSIDE OF THE CROSSWALK, AND IT IS TO BE CENTERED WHENEVER POSSIBLE.
3. DRAINAGE FACILITIES ARE TO BE LOCATED UP-GRADE OF ALL WHEELCHAIR RAMPS.
4. LOCATION OF WHEELCHAIR RAMPS SHOWN ON CONTRACT DRAWINGS.

REV. BY	DATE	REV. BY	DATE	DRAWN BY: E. GERMANI IV	DATE: 3/25/99
K.L.L.	5/17/05			APPROVED BY: STEPHEN H. COUTU, P.E. CITY ENGINEER/DEPUTY D.P.W.	DATE: 3/25/99
					SCALE: NTS



CITY OF EAST PROVIDENCE
DEPARTMENT OF PUBLIC WORKS
ENGINEERING DIVISION
STANDARD DETAIL



NOTES:

1. WHEN A UTILITY POLE LOCATED IN THE SIDEWALK FALLS WITHIN A CROSSWALK AREA, THE WHEELCHAIR RAMP WILL BE PLACED SUCH THAT THE POLE FALLS OUTSIDE THE RAMP.
2. AT NO TIME IS ANY PART OF THE WHEELCHAIR RAMP TO BE LOCATED OUTSIDE OF THE CROSSWALK, AND IT IS TO BE CENTERED WHENEVER POSSIBLE.
3. DRAINAGE FACILITIES ARE TO BE LOCATED UP-GRADE OF ALL WHEELCHAIR RAMP.
4. DETECTABLE WARNING PANEL SHALL BE IN ACCORDANCE WITH SECTION 942 OF THE RHODE ISLAND STANDARD SPECIFICATIONS; PANEL TO MATCH RAMP WIDTH.

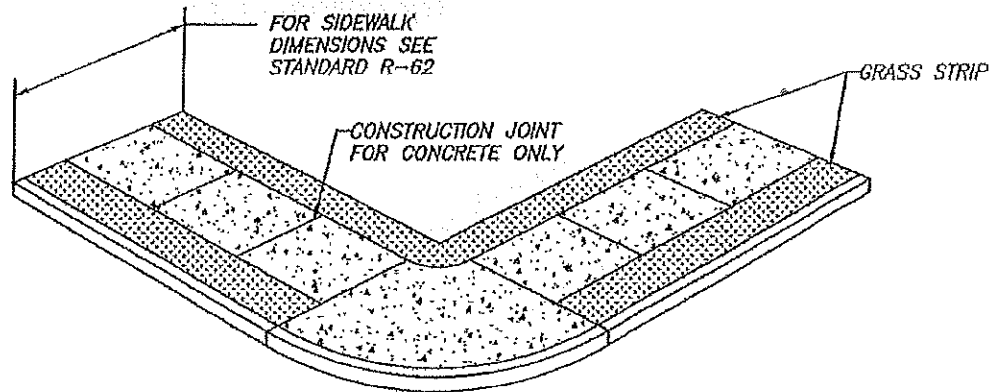
REV. BY	DATE	REV. BY	DATE	DRAWN BY: E. GERMANI IV	DATE:
				APPROVED BY: STEPHEN H. COUTU, P.E. CITY ENGINEER/DEPUTY D.P.W.	DATE:
					SCALE: NTS



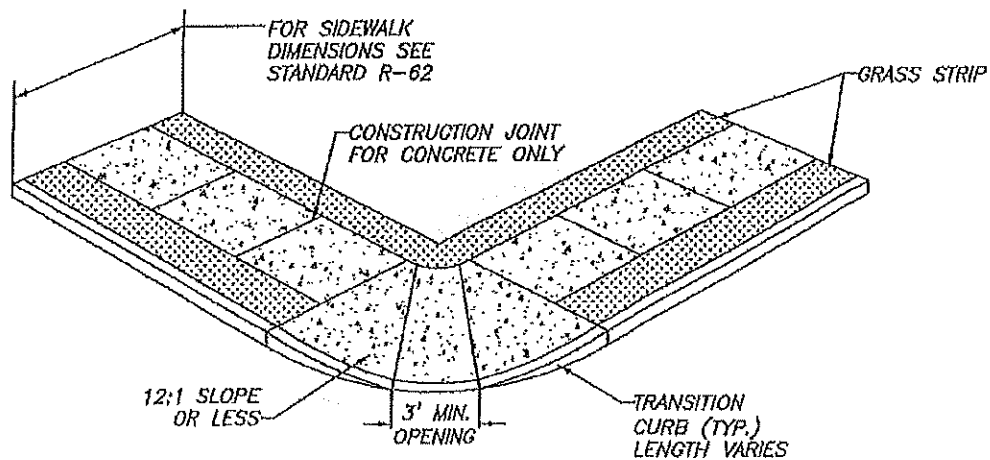
CITY OF EAST PROVIDENCE
DEPARTMENT OF PUBLIC WORKS
ENGINEERING DIVISION
STANDARD DETAIL



SIDEWALK CORNERS



SIDEWALK CORNER



SIDEWALK CORNER
WITH WHEELCHAIR RAMP

NOTES:

1. WHEN A UTILITY POLE LOCATED IN THE SIDEWALK FALLS WITHIN A CROSSWALK AREA, THE WHEELCHAIR RAMP WILL BE PLACED SUCH THAT THE POLE FALLS OUTSIDE THE RAMP.
2. AT NO TIME IS ANY PART OF THE WHEELCHAIR RAMP TO BE LOCATED OUTSIDE OF THE CROSSWALK, AND IT IS TO BE CENTERED WHENEVER POSSIBLE.
3. DRAINAGE FACILITIES ARE TO BE LOCATED UP-GRADE OF ALL WHEELCHAIR RAMPS.
4. LOCATION OF WHEELCHAIR RAMPS SHOWN ON CONTRACT DRAWINGS.

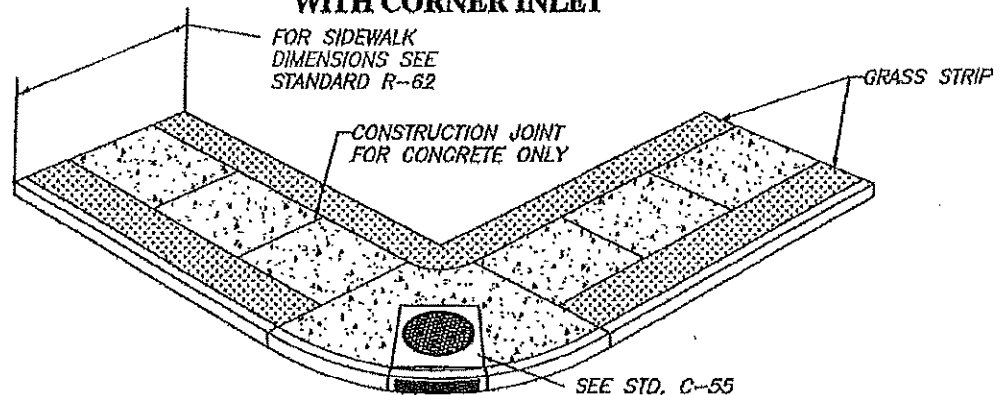
REV. BY	DATE	REV. BY	DATE	DRAWN BY: E. GERMANI IV	DATE: 5/12/99
				APPROVED BY: STEPHEN H. COUTU, P.E.	DATE: 5/12/99
				CITY ENGINEER/DEPUTY D.P.W.	SCALE: NTS



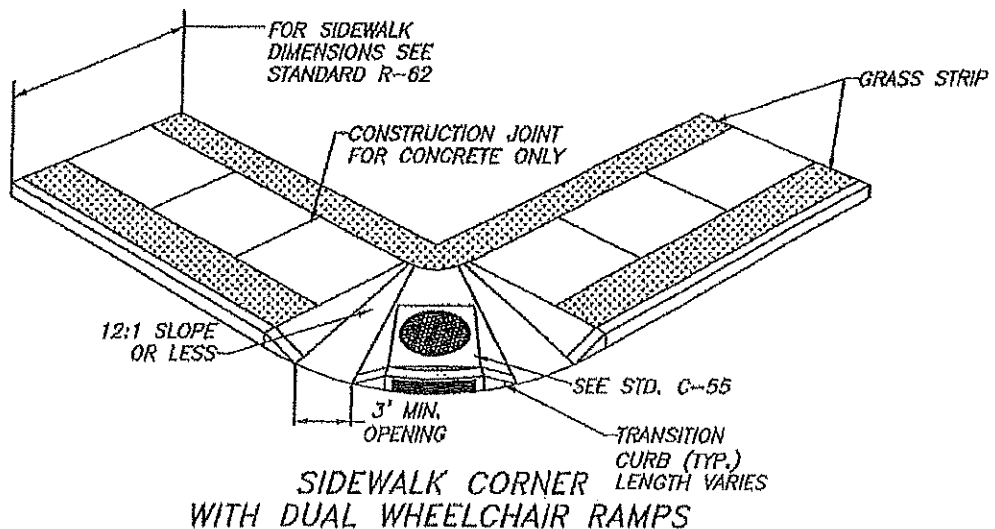
CITY OF EAST PROVIDENCE
DEPARTMENT OF PUBLIC WORKS
ENGINEERING DIVISION
STANDARD DETAIL



SIDEWALK CORNERS
WITH CORNER INLET



SIDEWALK CORNER



SIDEWALK CORNER
WITH DUAL WHEELCHAIR RAMPS

NOTES:

1. WHEN A UTILITY POLE LOCATED IN THE SIDEWALK FALLS WITHIN A CROSSWALK AREA, THE WHEELCHAIR RAMP WILL BE PLACED SUCH THAT THE POLE FALLS OUTSIDE THE RAMP.
2. AT NO TIME IS ANY PART OF THE WHEELCHAIR RAMP TO BE LOCATED OUTSIDE OF THE CROSSWALK, AND IT IS TO BE CENTERED WHENEVER POSSIBLE.
3. DRAINAGE FACILITIES ARE TO BE LOCATED UP-GRADE OF ALL WHEELCHAIR RAMPS.
4. LOCATION OF WHEELCHAIR RAMPS SHOWN ON CONTRACT DRAWINGS.

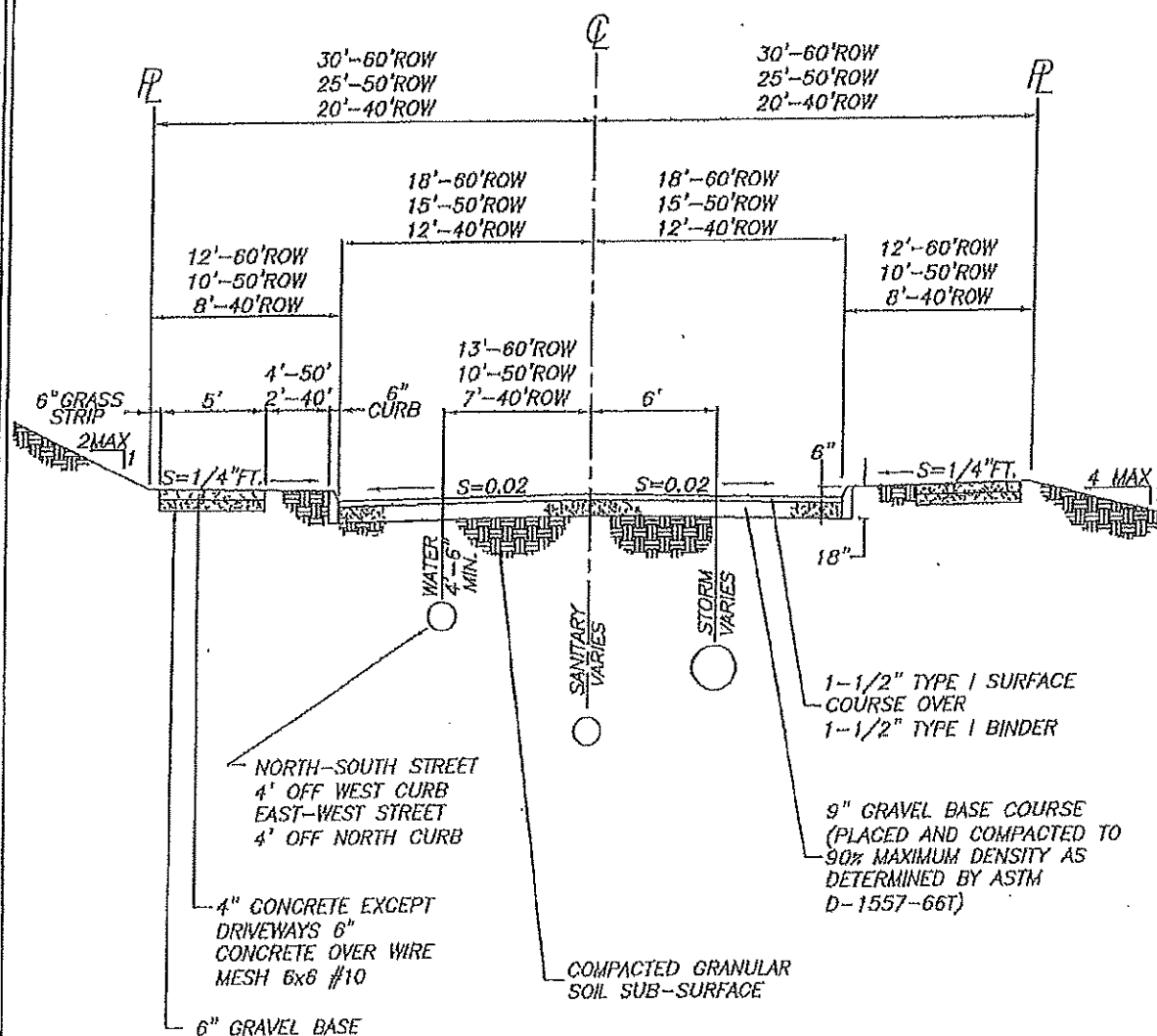
REV. BY	DATE	REV. BY	DATE	DRAWN BY: E. GERMANI IV	DATE: 5/12/99
				APPROVED BY: STEPHEN H. COUTU, P.E. CITY ENGINEER/DEPUTY D.P.W.	DATE: 5/12/99
					SCALE: NTS



CITY OF EAST PROVIDENCE
DEPARTMENT OF PUBLIC WORKS
ENGINEERING DIVISION
STANDARD DETAIL



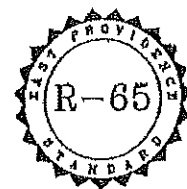
TYPICAL ROAD SECTION
RESIDENTIAL STREET



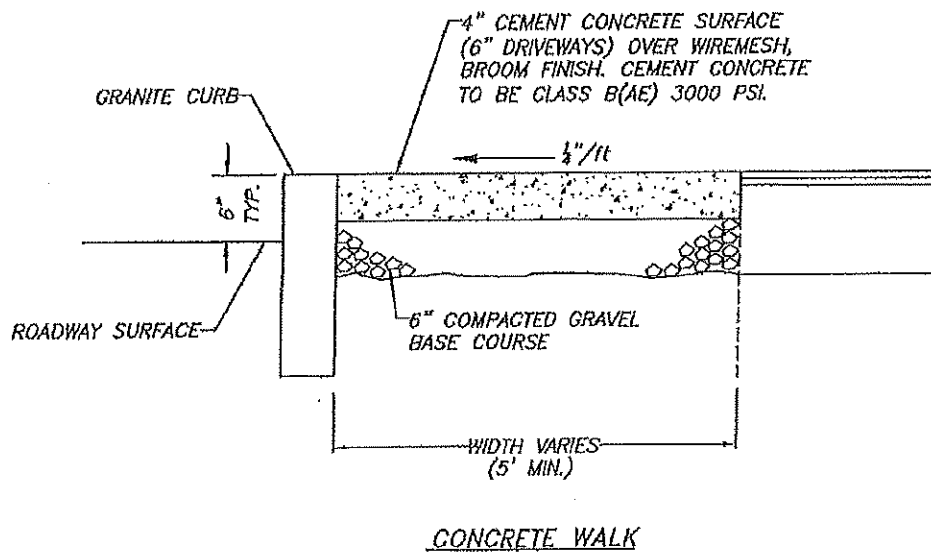
REV. BY	DATE	REV. BY	DATE	DRAWN BY: KAREN LANOUE	DATE: 10/05/99
EGS/eglv	11/8/13			APPROVED BY: STEPHEN H. COUTU, P.E. CITY ENGINEER/DEPUTY D.P.W.	DATE: 10/05/99
					SCALE: NTS



CITY OF EAST PROVIDENCE
DEPARTMENT OF PUBLIC WORKS
ENGINEERING DIVISION
STANDARD DETAIL



SIDEWALK DETAIL



NOTE:

GRAVEL BASE COURSE TO CONFORM TO STATE STANDARD
SPECIFICATIONS AS SHOWN IN COLUMN I, SUBSECTION M.01.09

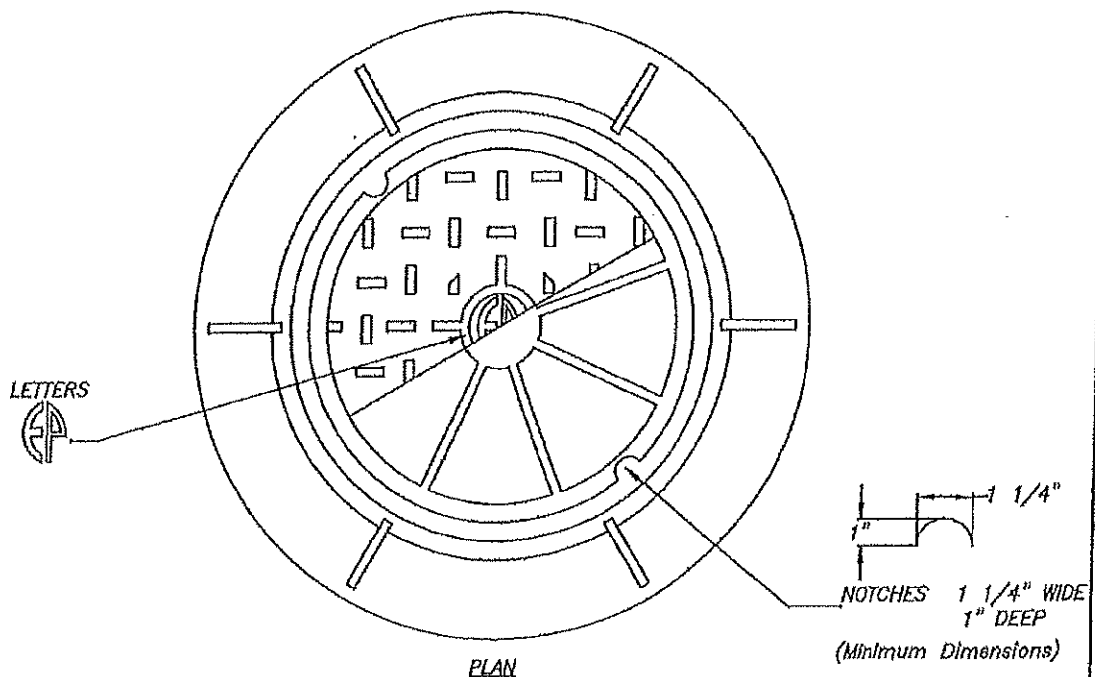
REV. BY	DATE	REV. BY	DATE	DRAWN BY: KAREN LANDUE	DATE: 01/09/03
K.L.L.	9/28/06			APPROVED BY: STEPHEN H. COUTU, P.E. CITY ENGINEER/DEPUTY D.P.W.	DATE: 01/09/03
					SCALE: NTS



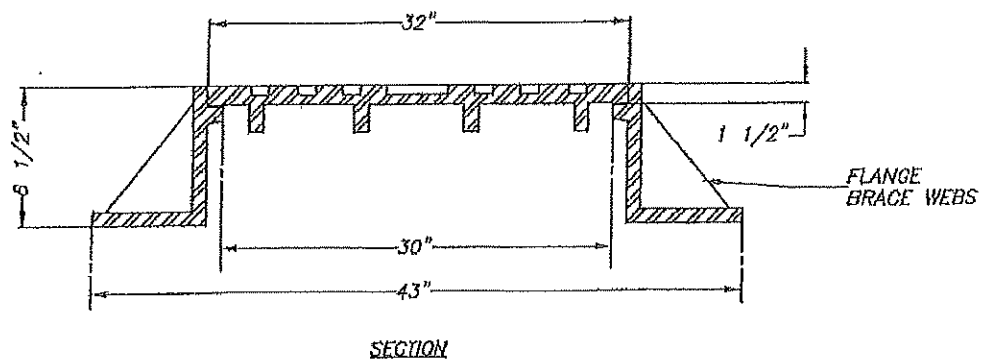
**CITY OF EAST PROVIDENCE
DEPARTMENT OF PUBLIC WORKS
ENGINEERING DIVISION
STANDARD DETAIL**



SANITARY FRAME AND COVER DETAIL



- NOTE:**
1. VENTILATION HOLES OF ANY SIZE ARE NOT ALLOWED
2. TOTAL WEIGHT = 590lbs.



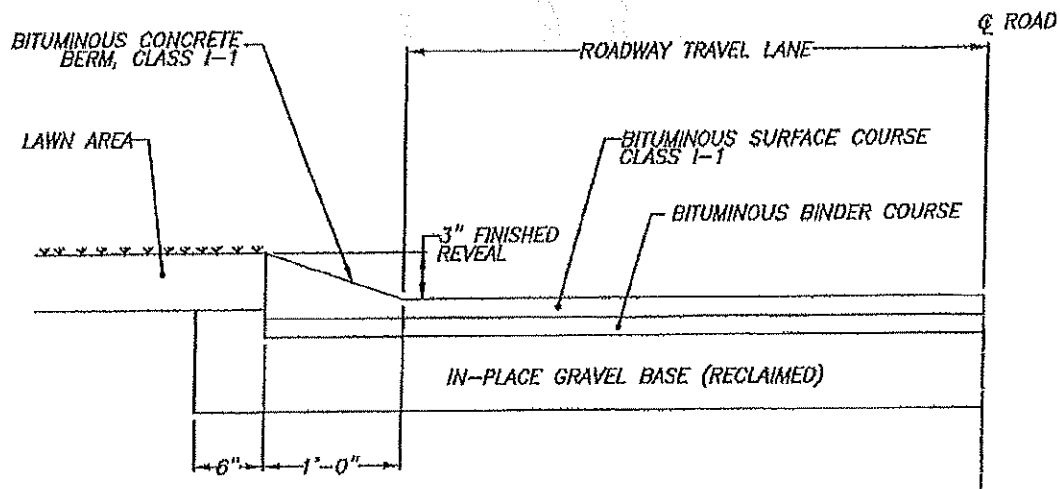
REV. BY	DATE	REV. BY	DATE	DRAWN BY: E GERMANI IV	DATE: 3/13/02
				APPROVED BY: ALAN M. CORVI, P.E. CITY ENGINEER/DEPUTY D.P.W.	DATE: 3/13/02
					SCALE: NTS



CITY OF EAST PROVIDENCE
DEPARTMENT OF PUBLIC WORKS
ENGINEERING DIVISION
STANDARD DETAIL



BITUMINOUS BERM



NOTES:

1. SHALL BE IN ACCORDANCE WITH SECTION 905 OF THE R.I.D.O.T. STANDARD SPECIFICATIONS.
2. BITUMINOUS BERM CAN BE PLACED AT THE SAME TIME THAT THE SURFACE COURSE LAYER IS PLACED ON THE PROJECT ROADWAY, OR IT CAN BE INSTALLED IN A SEPARATE OPERATION.

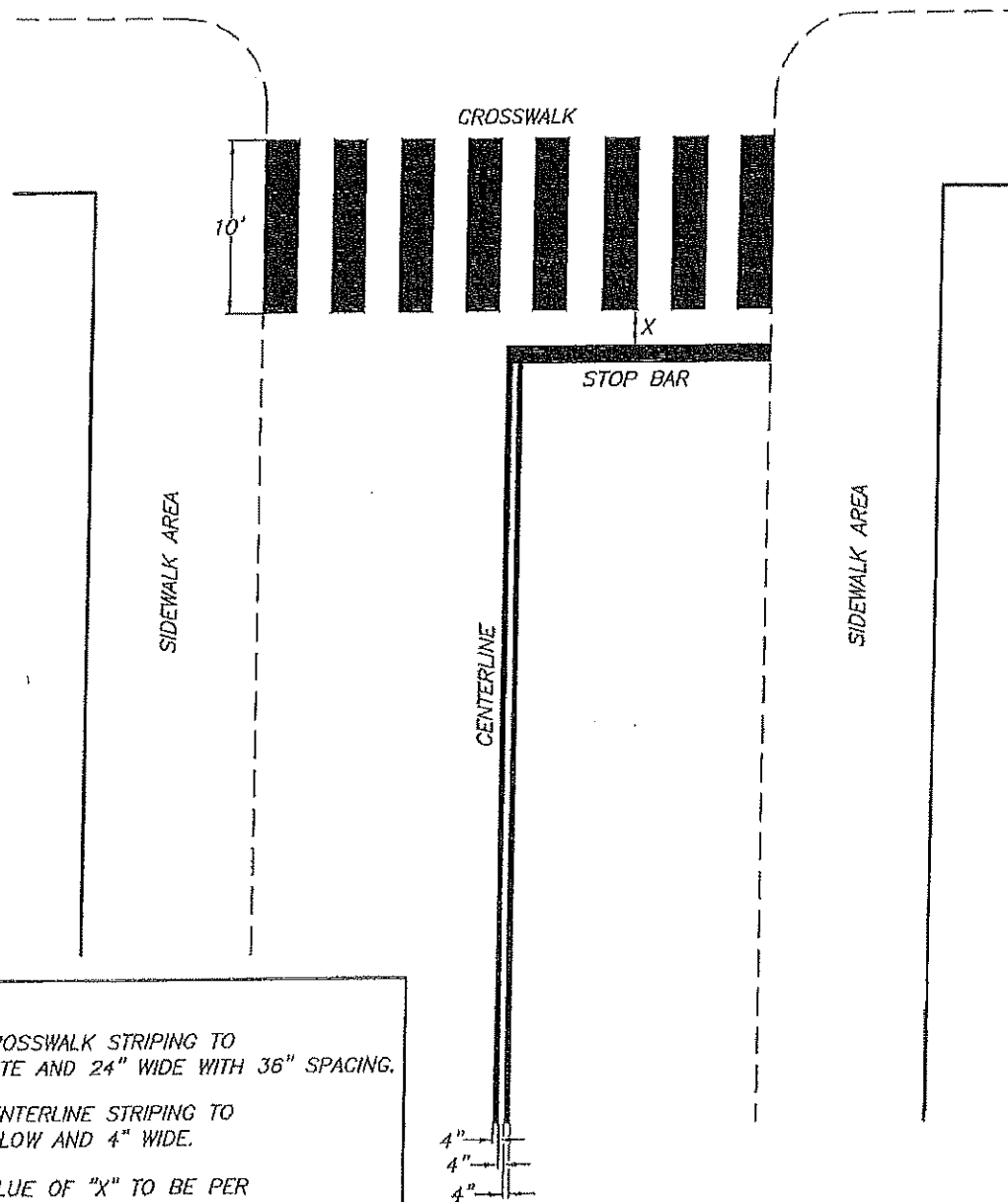
REV. BY	DATE	REV. BY	DATE	DRAWN BY: KAREN LANOUE	DATE: 04/19/02
				APPROVED BY: ALAN CORVI, P.E. CITY ENGINEER	DATE: 04/19/02
					SCALE: NTS



CITY OF EAST PROVIDENCE
DEPARTMENT OF PUBLIC WORKS
ENGINEERING DIVISION
STANDARD DETAIL



TYPICAL ROAD STRIPING (Continental Style)



NOTE:

ALL CROSSWALK STRIPING TO
BE WHITE AND 24" WIDE WITH 36" SPACING.

ALL CENTERLINE STRIPING TO
BE YELLOW AND 4" WIDE.

THE VALUE OF "X" TO BE PER
THE TRAFFIC ENGINEER'S DIRECTION
FOR MIDBLOCK CROSSINGS AND
3' FOR CROSSINGS AT INTERSECTIONS

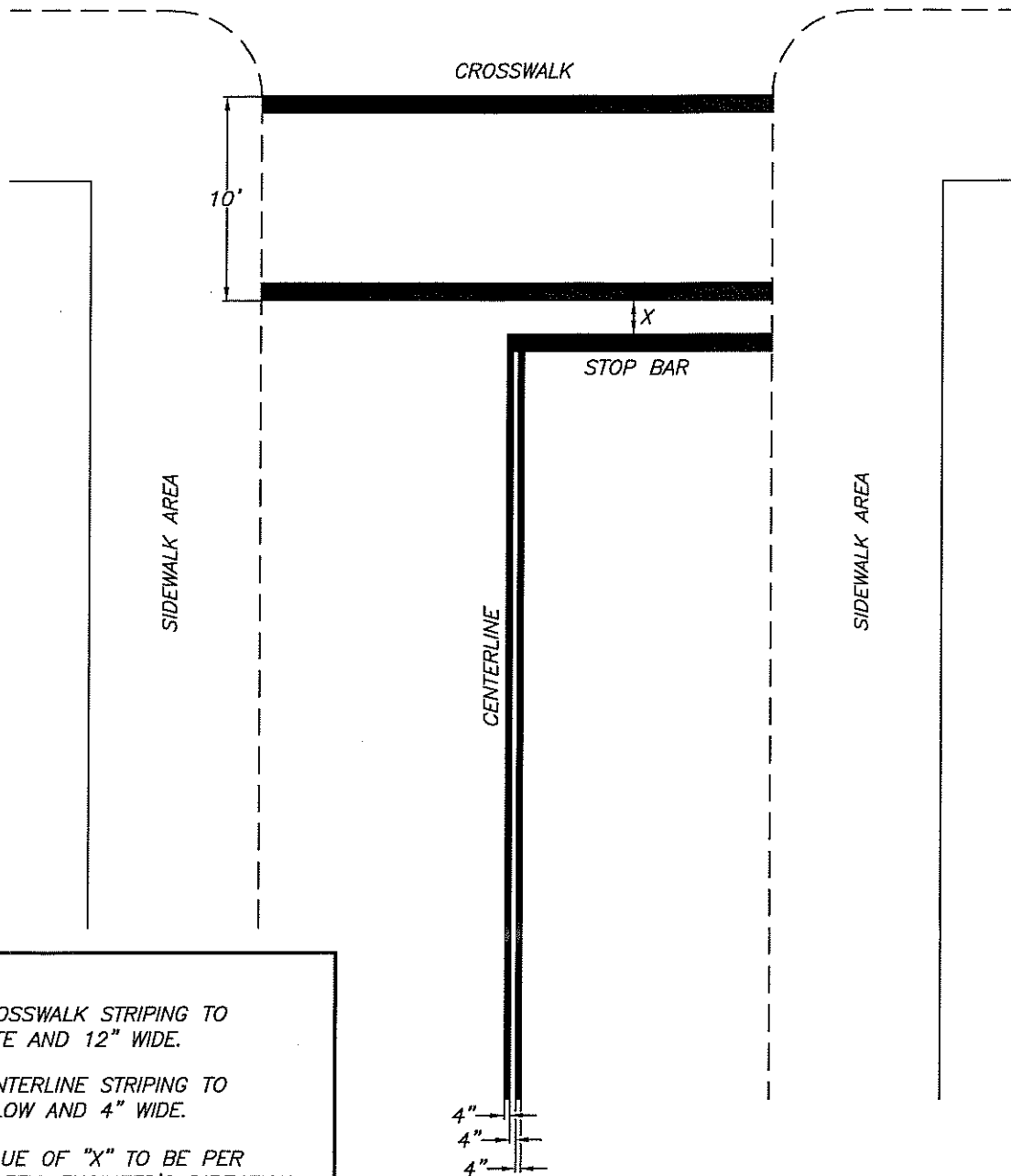
REV. BY	DATE	REV. BY	DATE	DRAWN BY: E. GERMANI IV	DATE: 11/19/14
				APPROVED BY: ERIK G. SKADBERG, P.E. CITY ENGINEER/DEPUTY D.P.W.	DATE: 11/19/14
					SCALE: NTS



**CITY OF EAST PROVIDENCE
DEPARTMENT OF PUBLIC WORKS
ENGINEERING DIVISION
STANDARD DETAIL**



TYPICAL ROAD STRIPING



NOTE:

ALL CROSSWALK STRIPING TO BE WHITE AND 12" WIDE.

ALL CENTERLINE STRIPING TO BE YELLOW AND 4" WIDE.

THE VALUE OF "X" TO BE PER THE TRAFFIC ENGINEER'S DIRECTION FOR MIDBLOCK CROSSINGS AND 3' FOR CROSSINGS AT INTERSECTIONS

REV. BY	DATE	REV. BY	DATE	DRAWN BY: E. GERMANI IV	DATE: 11/19/14
				APPROVED BY: ERIK G. SKADBERG, P.E.	DATE: 11/19/14
				CITY ENGINEER/DEPUTY D.P.W.	SCALE: NTS

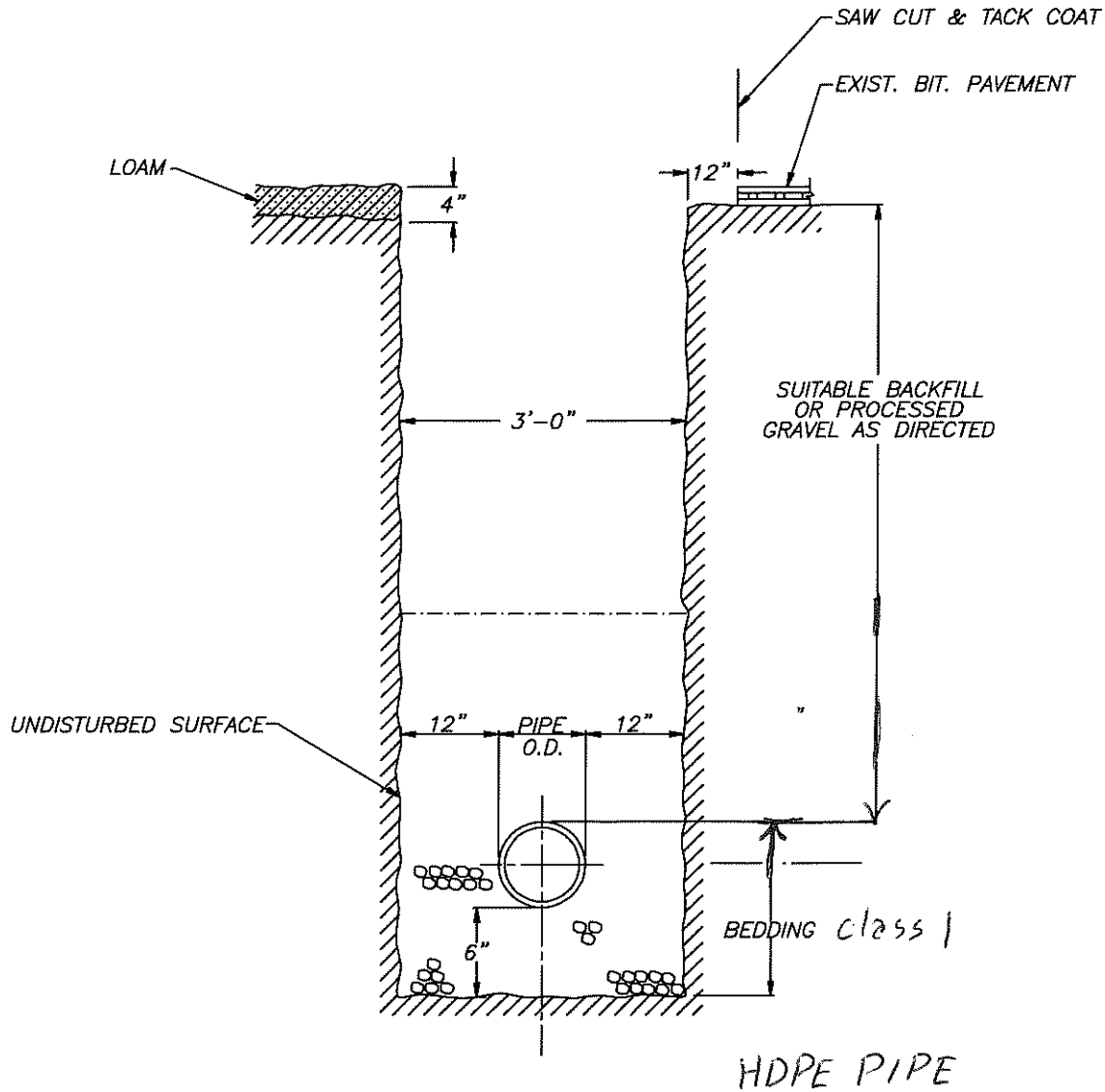
SCALE: NTS



**CITY OF EAST PROVIDENCE
DEPARTMENT OF PUBLIC WORKS
ENGINEERING DIVISION
STANDARD DETAIL**



PIPE TRENCH DETAIL



NOTE:

1. MINIMUM DEPTH OF COVER SHALL BE 1'-0"

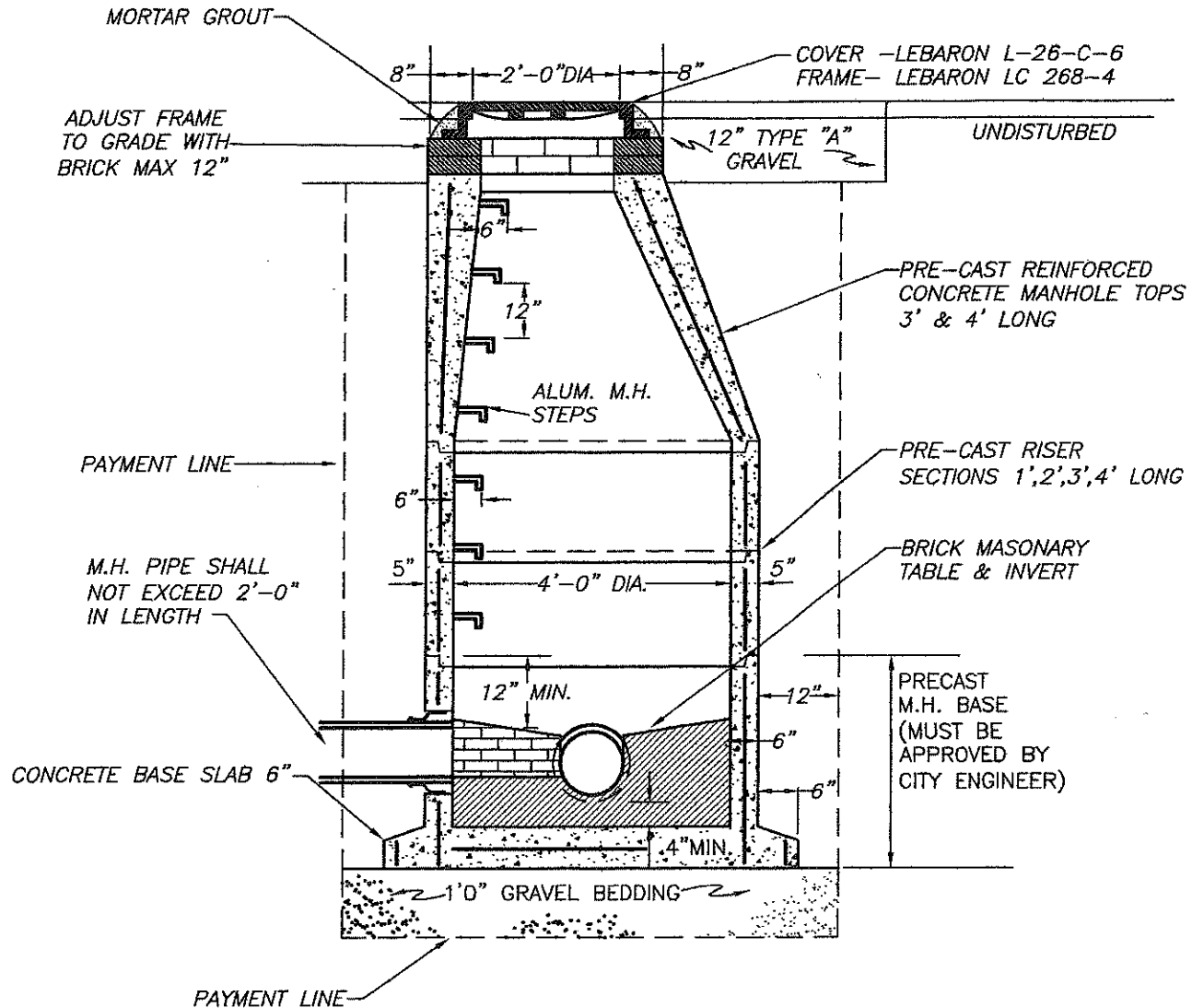
REV. BY	DATE	REV. BY	DATE	DRAWN BY: KAREN LANOUE	DATE: 11/19/99
				APPROVED BY: STEPHEN H. COUTU, P.E.	DATE:
				CITY ENGINEER/DEPUTY D.P.W.	SCALE: N.T.S.



**CITY OF EAST PROVIDENCE
DEPARTMENT OF PUBLIC WORKS
ENGINEERING DIVISION
STANDARD DETAIL**



MANHOLE DETAIL



NOTE: MANHOLE COVERS TO HAVE 2-3/4 INCH HOLES
AND THE LETTERS "EP" EMBOSSED THEREON. (SEE STD C-58)

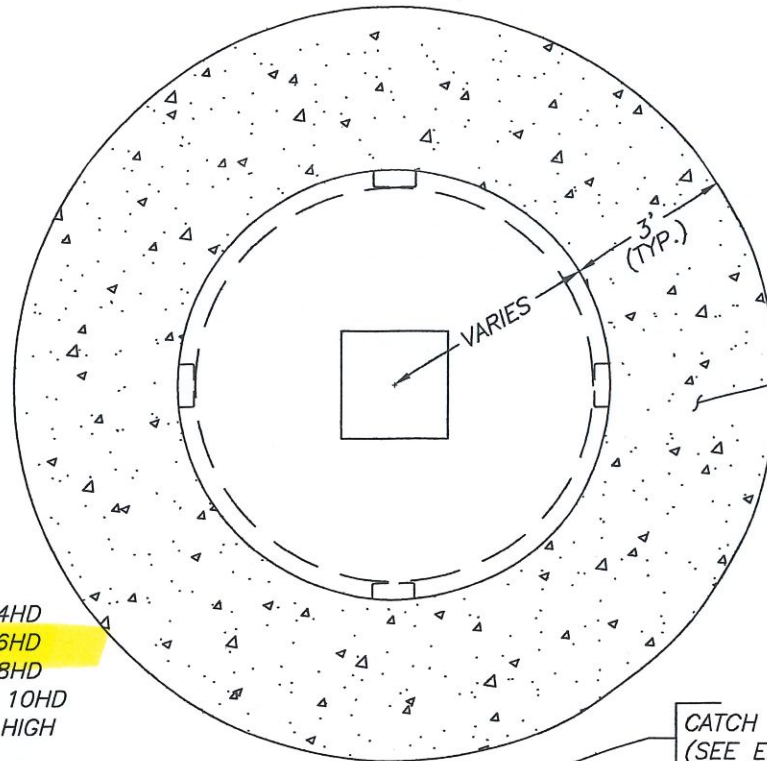
REV. BY	DATE	REV. BY	DATE	DRAWN BY: REBECCA J. CHAPLIN	DATE: 4/17/01
				APPROVED BY: STEPHEN H. COUTU, P.E.	DATE: 4/17/01
				CITY ENGINEER/DEPUTY D.P.W.	SCALE: NTS



**CITY OF EAST PROVIDENCE
DEPARTMENT OF PUBLIC WORKS
ENGINEERING DIVISION
STANDARD DETAIL**



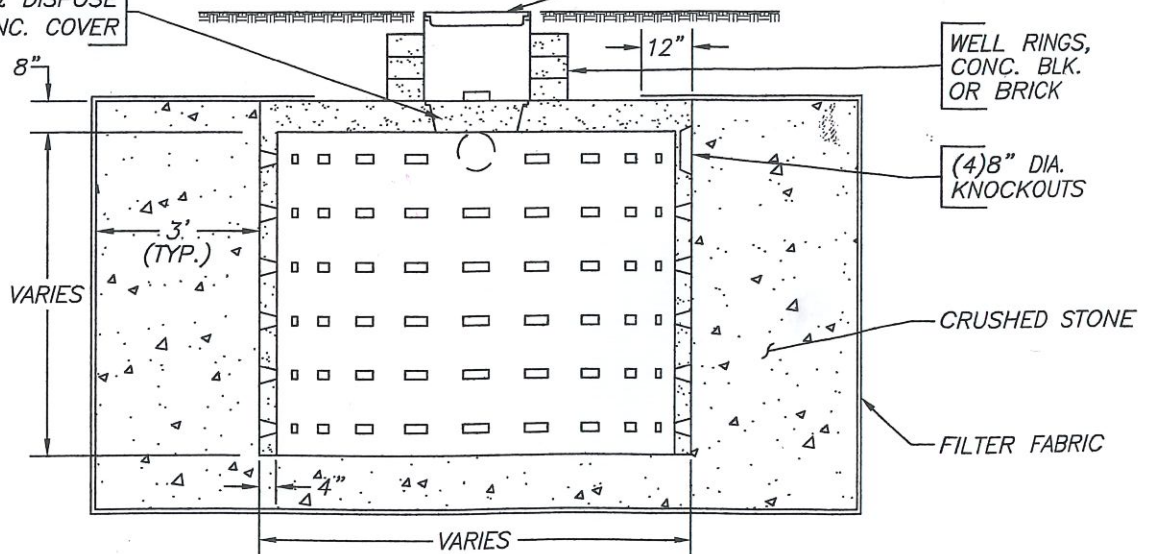
HEAVY DUTY PRECAST DRY WELL



NOTE

4'-0" ORDER NO. DW 4HD
6'-0" ORDER NO. DW 6HD
8'-0" ORDER NO. DW 8HD
10'-0" ORDER NO. DW 10HD
AVAILABLE 4', 6', 8' & 10' HIGH

REMOVE & DISPOSE
24" CONC. COVER



CONCRETE MINIMUM STRENGTH-4,000 P.S.I. @ 28 DAYS
STEEL REINFORCEMENT-ASTM A-615 GRADE 60, 1" MIN. COVER
DESIGN LOADING-AASHTO HS20-44

REV. BY	DATE	REV. BY	DATE	DRAWN BY: KAREN LANOUE	DATE: 4/27/00
				APPROVED BY: STEPHEN H. COUTU, P.E.	DATE: 4/27/00
				CITY ENGINEER/DEPUTY D.P.W.	SCALE: NTS