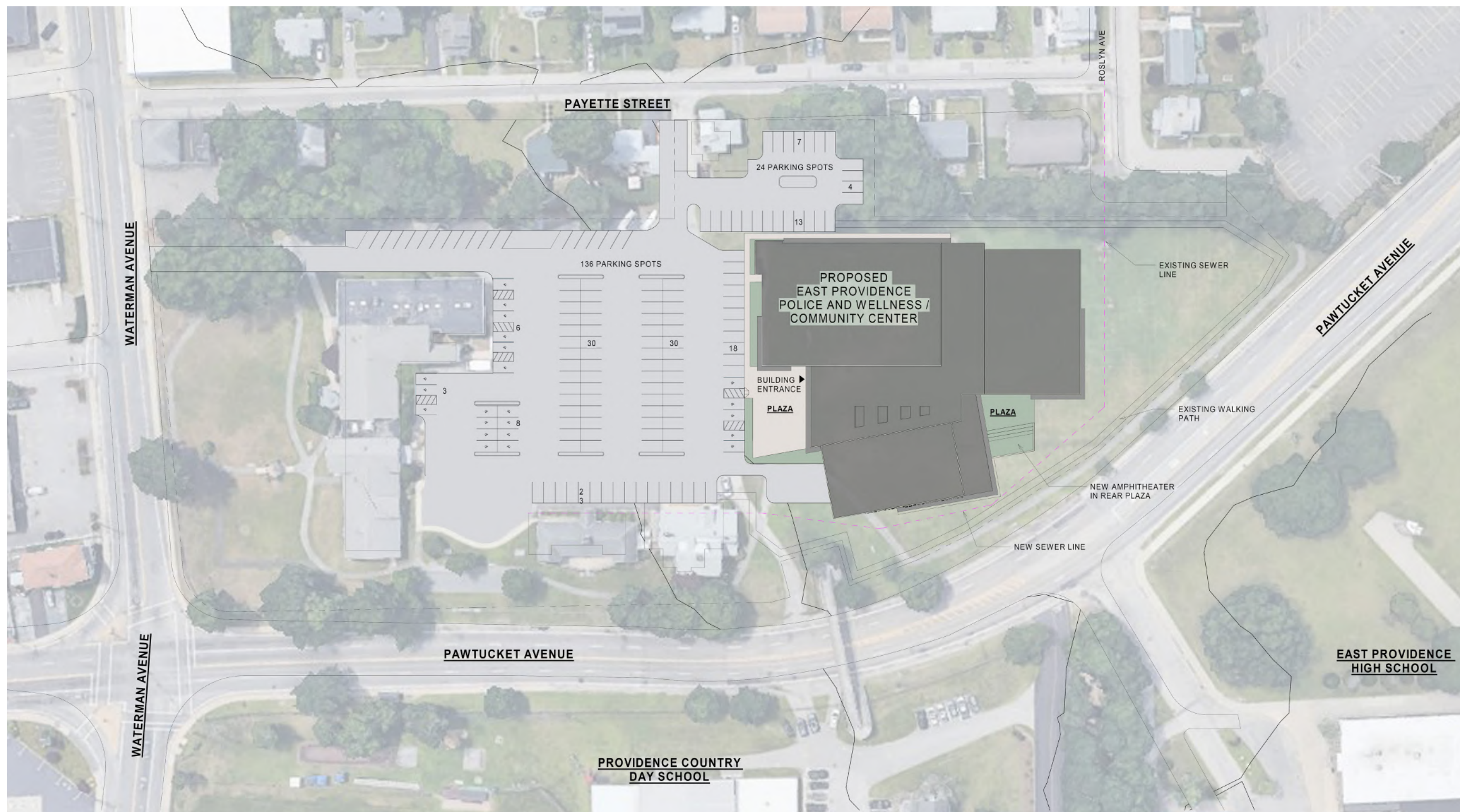


EAST PROVIDENCE COMMUNITY CENTER



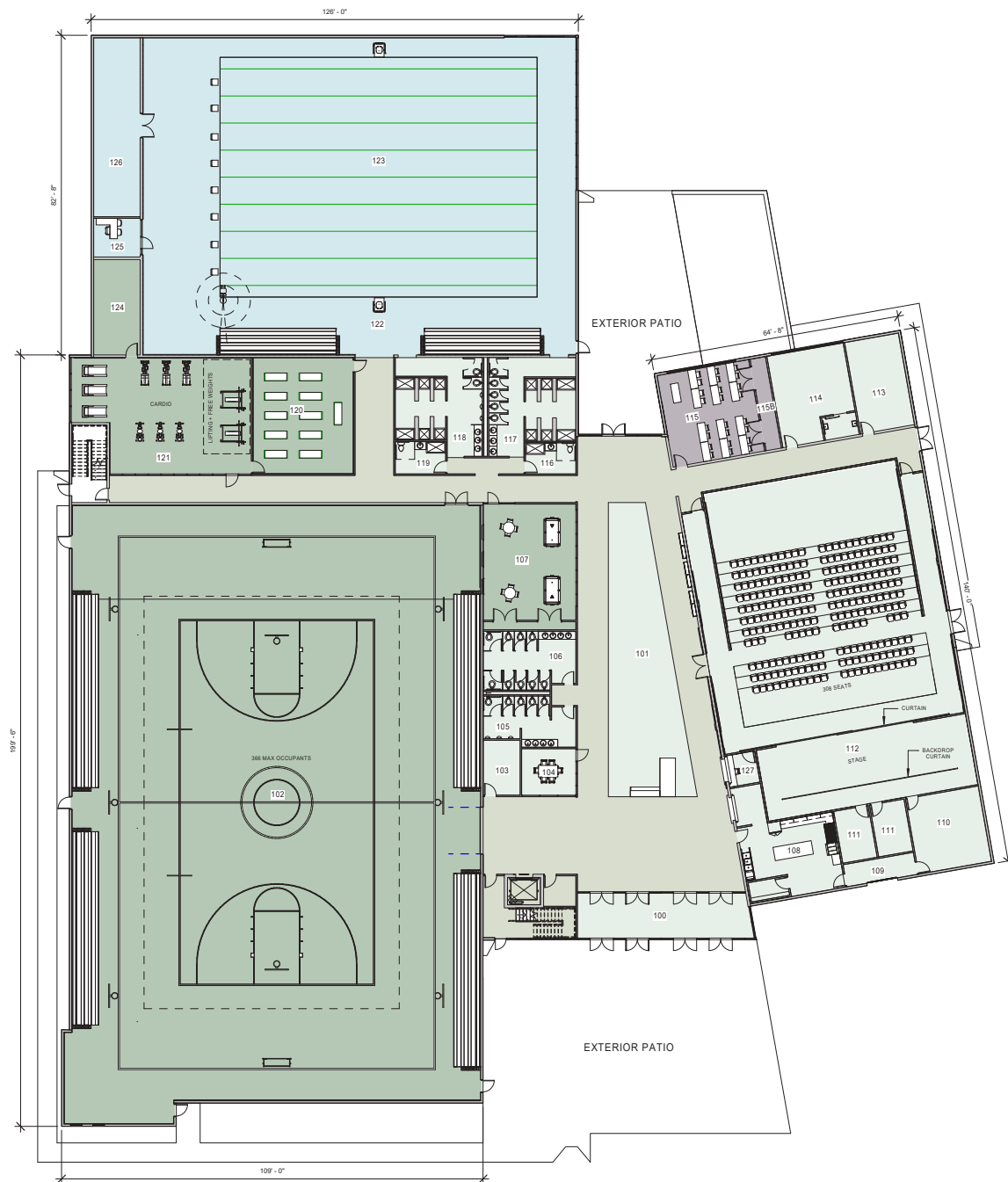


STARCK
ARCHITECTS

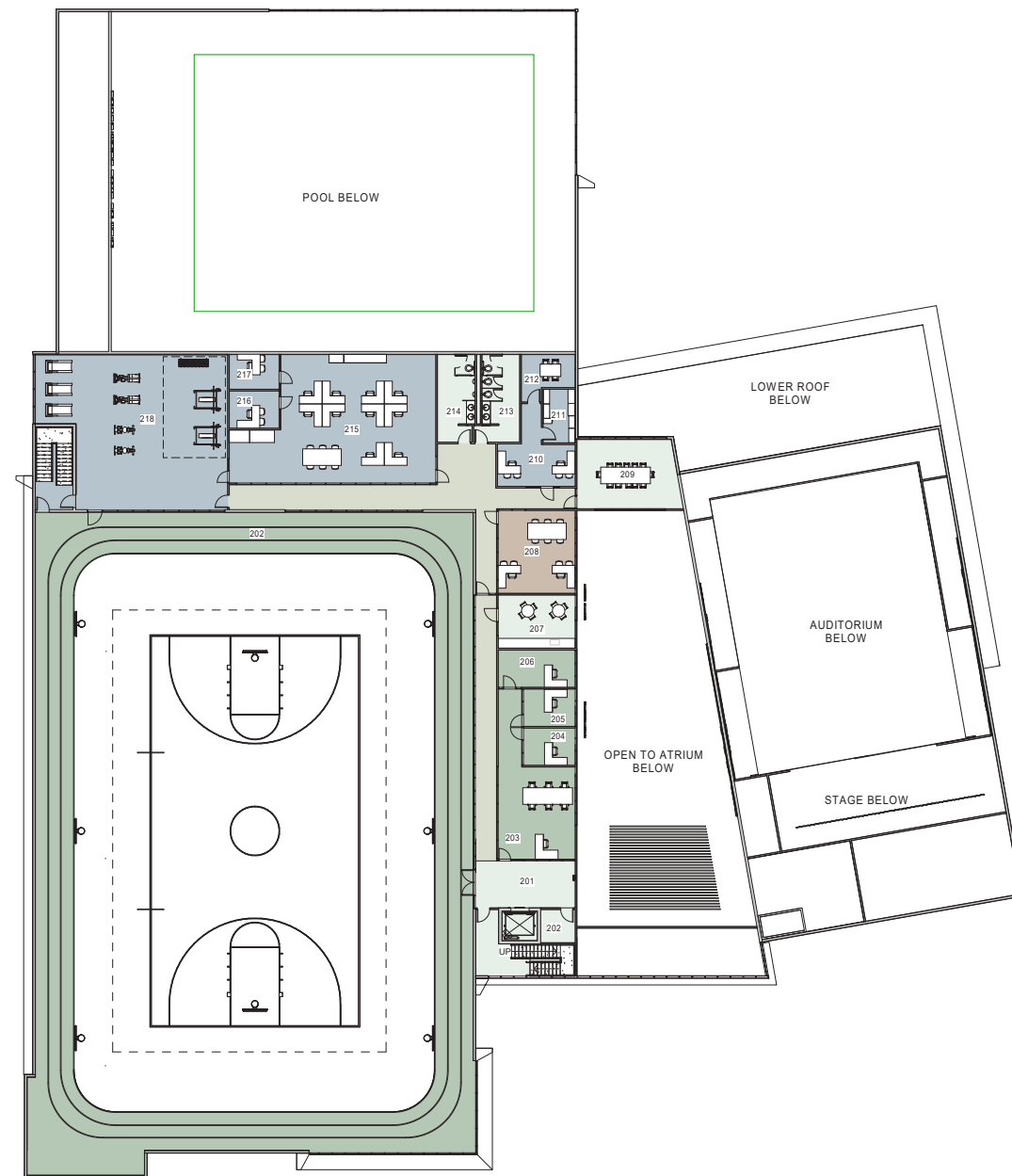




STARCK
ARCHITECTS



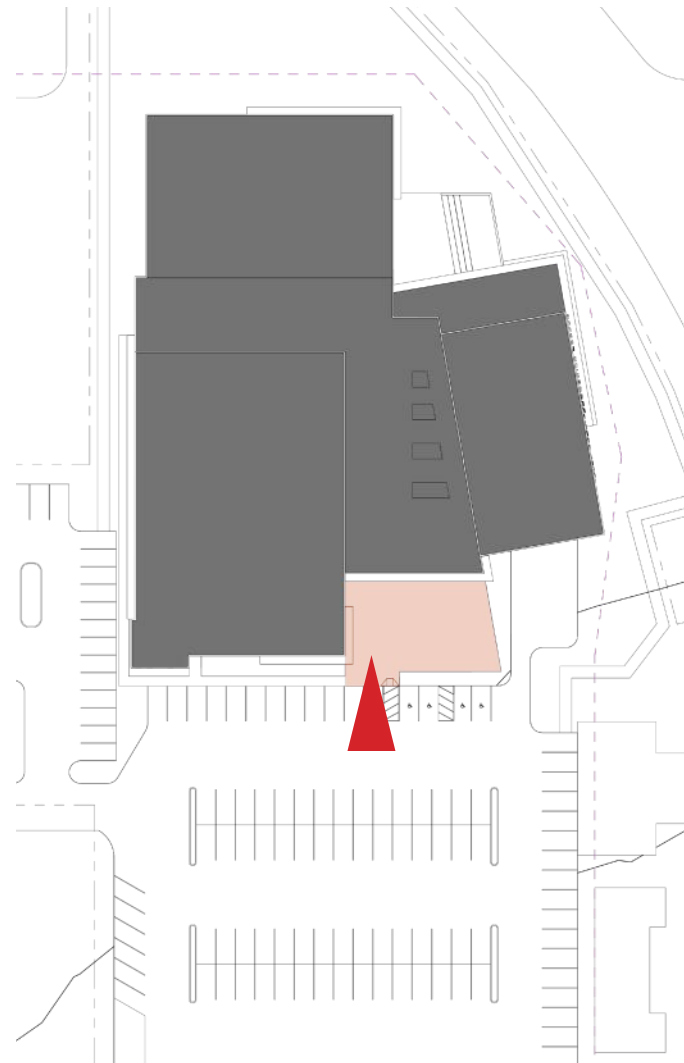
1 PROPOSED GROUND LEVEL
SCALE: 1/16" = 1'-0"
TOTAL FLOOR AREA: 48,560 SF



2 PROPOSED SECOND LEVEL
SCALE: 1/16" = 1'-0"
TOTAL FLOOR AREA: 13,440 SF

ROOM SCHEDULE		
NUMBER	NAME	AREA
CIRCULATION		
	LOWER CIRCULATION	5285 SF
	UPPER CIRCULATION	1045 SF
FIRE DEPARTMENT		
208	EMA READINESS OFFICE	372 SF
POLICE		
210	PROFESSIONAL STANDARDS OFFICE	238 SF
211	OPS STORAGE	100 SF
212	OPS MEETING ROOM	121 SF
215	POLICE OPEN OFFICE	1322 SF
216	POLICE SARGENT OFFICE	108 SF
217	P+T CAPTAIN'S OFFICE	101 SF
218	WORKFORCE TRAINING FACILITY	1734 SF
POOL		
122	POOL DECK	4121 SF
123	POOL	5084 SF
125	POOL OFFICE	120 SF
126	POOL STORAGE	555 SF
LIBRARY		
115	LIBRARIAN EDUCATOR PROGRAM SPACE	576 SF
115B	LIBRARY STORAGE	96 SF
RECREATION		
102	GYMNASIUM	16476 SF
107	GAME ROOM	778 SF
120	FITNESS STUDIO	782 SF
121	TRAINING FACILITY	1272 SF
124	STORAGE	296 SF
202	WALKING TRACK	4903 SF
203	ADMINISTRATION OPEN OFFICE	524 SF
204	CAROUSEL MANAGER'S OFFICE	113 SF
205	RECREATION SUPERVISOR'S OFFICE	113 SF
206	RECREATION DIRECTOR'S OFFICE	167 SF
SHARED		
100	VESTIBULE	510 SF
101	STREET SCAPE	1240 SF
103	STORAGE	135 SF
104	MEETING ROOM	168 SF
105	RESTROOM - MEN	272 SF
106	RESTROOM - WOMEN	348 SF
108	KITCHEN	564 SF
109	RECEIVING AREA	106 SF
110	AUDITORIUM STORAGE	377 SF
111	GREEN ROOM	250 SF
112	EDUCATION ENHANCEMENT AUDITORIUM	5197 SF
113	MECHANICAL ROOM	338 SF
114	CHILD CARE	480 SF
116	GENDER NEUTRAL RESTROOMS	104 SF
117	RESTROOM - WOMEN	520 SF
118	RESTROOM - MEN	516 SF
119	GENDER NEUTRAL RESTROOMS	109 SF
127	TICKET BOOTH	65 SF
201	LOBBY	643 SF
202	MECHANICAL ROOM	Redundant Room
207	BREAK ROOM	239 SF
209	MEETING ROOM	406 SF
213	RESTROOM - WOMEN	199 SF
214	RESTROOM - MEN	188 SF
TOTAL BUILDING AREA: 62,000 SF (GROSS)		

Entry / Exterior Space



KEY PLAN

- Farmer's Markets
- Outdoor Classroom
- Public Meetings
- Event Platform



STARCK
ARCHITECTS

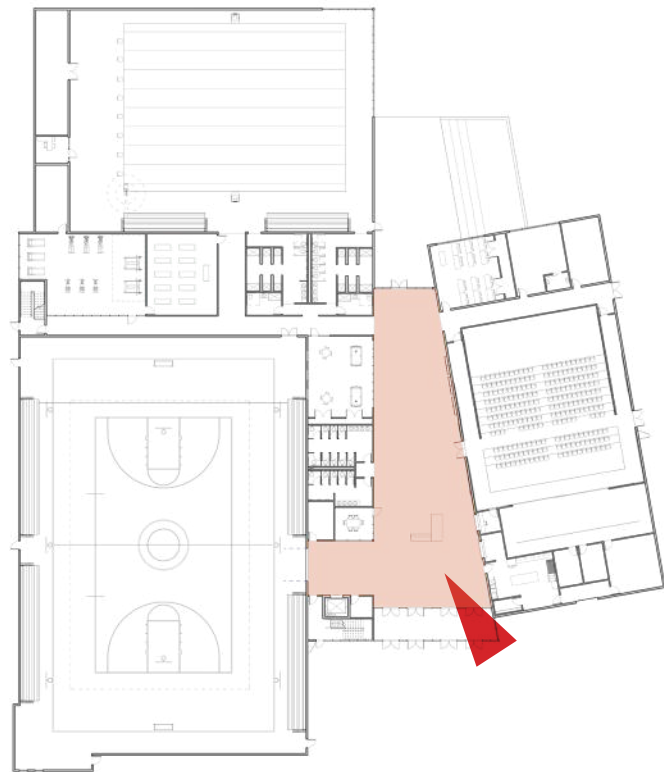




STARCK
ARCHITECTS



Interior “Streetscape”



KEY PLAN

Direct access to:

- Gymnasium
- Restrooms
- Recreation Multimedia Room
- Communal Commercial Kitchen
- Ticket Booth
- Community Performing Arts / Educational Seminar Space
- Pool Wing
- Educational Development Wing
- Stairwells / Elevator
- Health monitoring Flex. Space

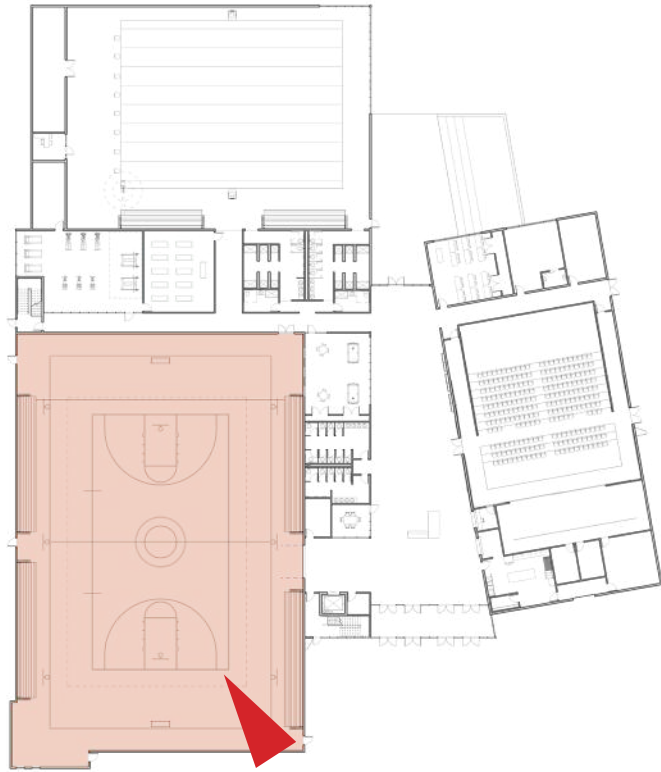


INTERIOR RENDER OF “STREETSCAPE”

Gymnasium



STARCK
ARCHITECTS



KEY PLAN

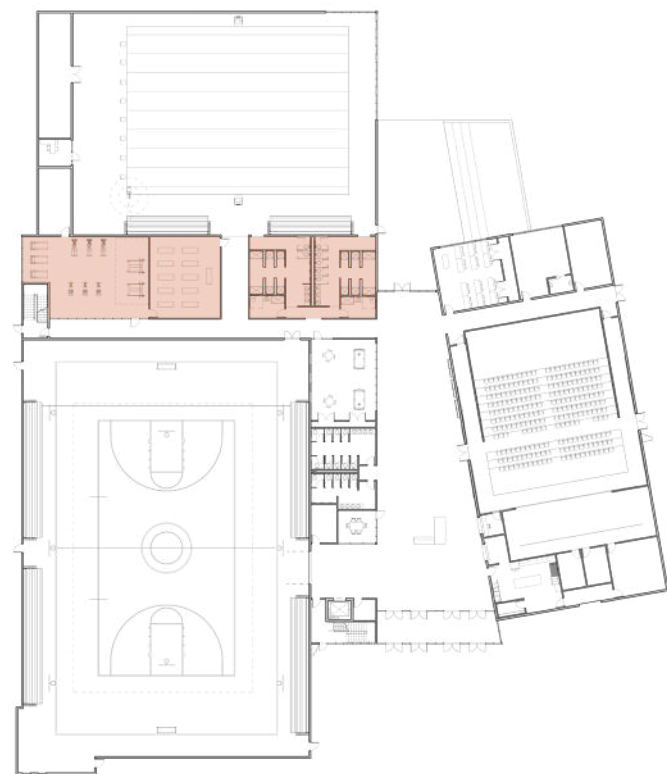
Provides for:

- 4 Basketball Courts
- 1 Futsal Court
- Mesh Net Divider
- Volleyball Court
- 4 Retractable Bleachers
- Upper Level Walking Track
- Public assemblies



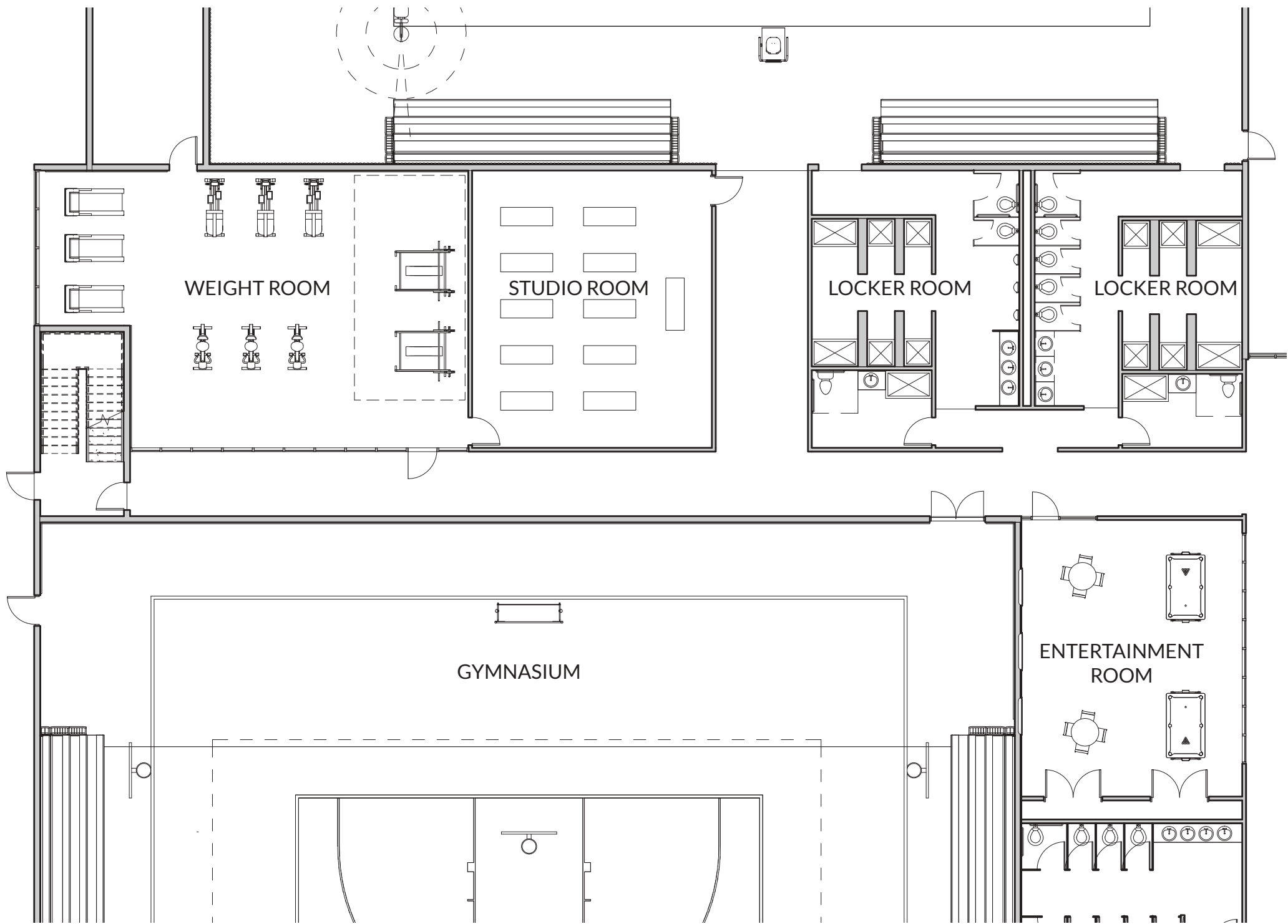
INTERIOR RENDER OF GYMNASIUM

Workforce Health Suite



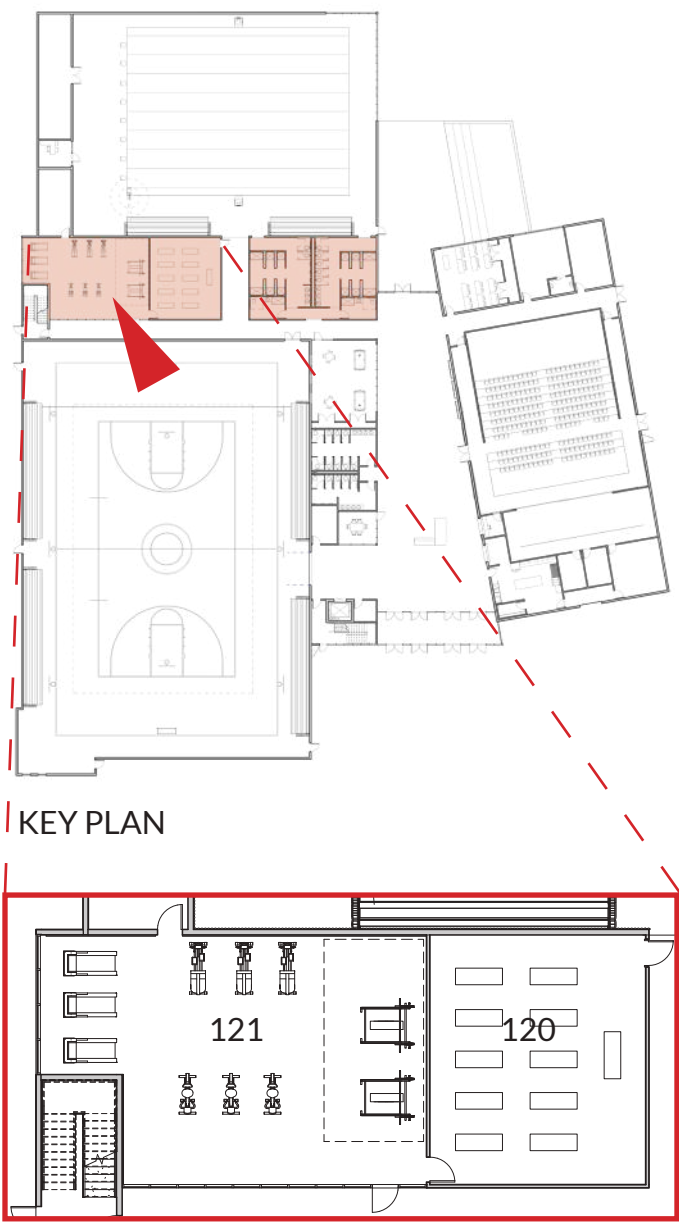
KEY PLAN

- 120 - Studio Room
121- Weight Room
- Includes: space for existing multi station weight apparatus, leg press, stair climber, treadmills and free weights
- Locker rooms - Provides for all gender restrooms and bathing facilities



GROUND FLOOR PLAN

Workforce Health Suite



120 - Studio Room

121- Weight Room

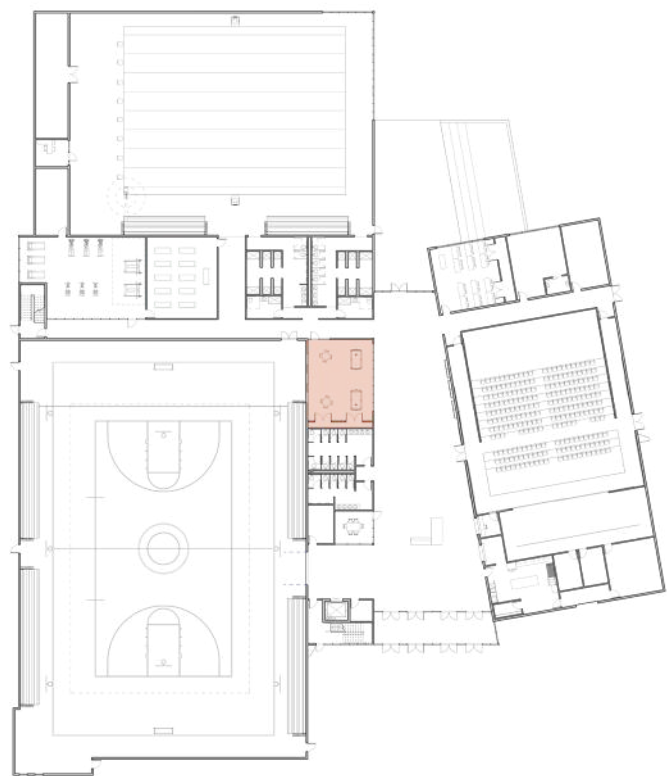
- Includes: space for existing multi station weight apparatus, leg press, stair climber, treadmills and free weights

Locker rooms - Provides for all gender restrooms and bathing facilities



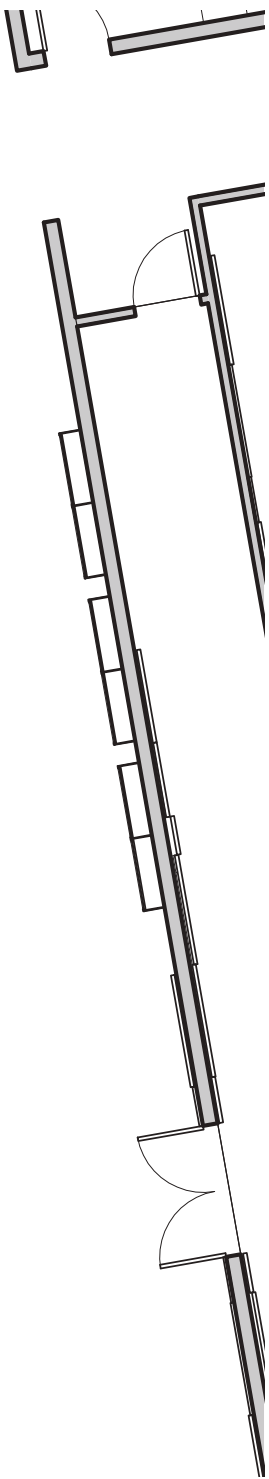
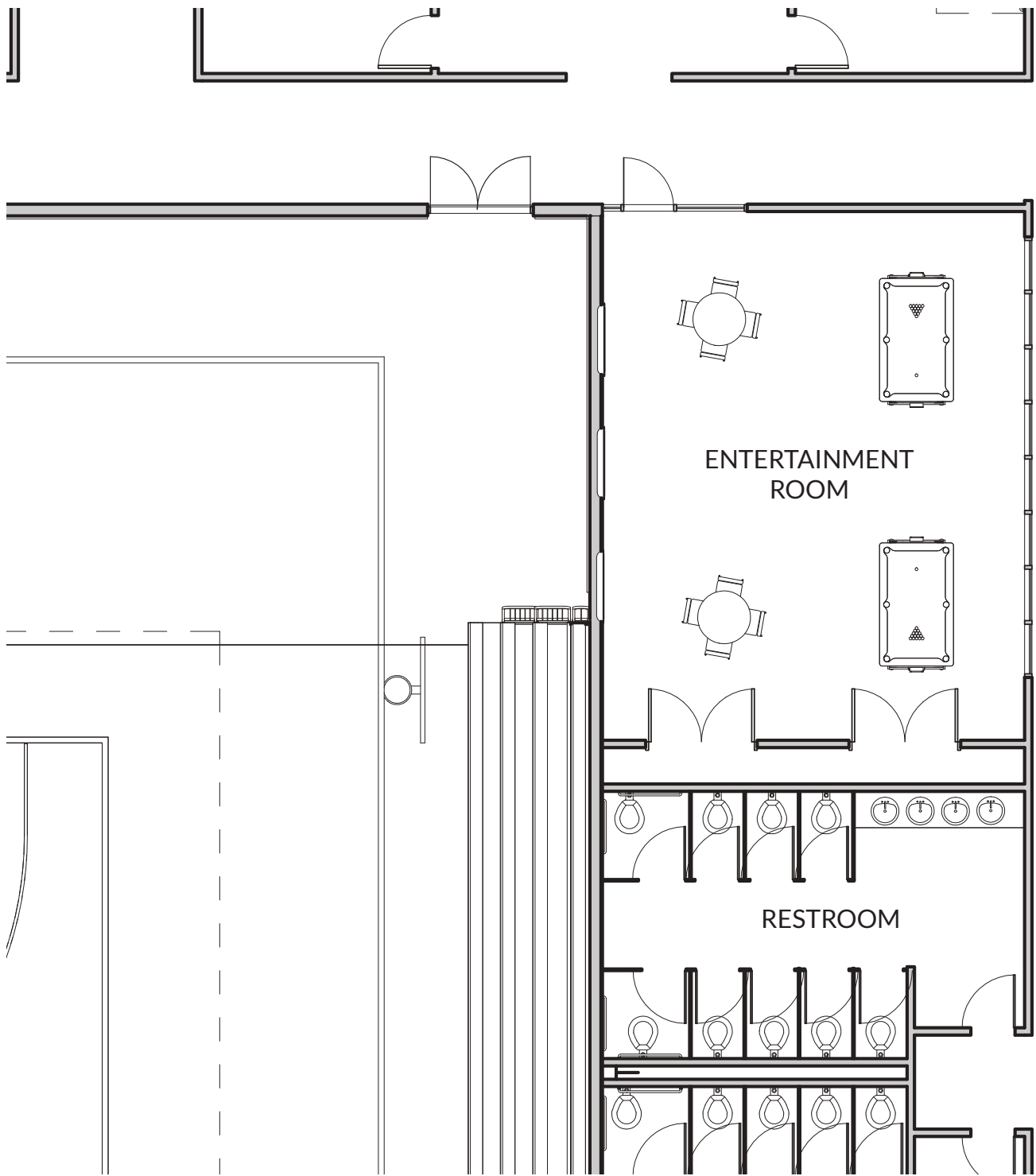
INTERIOR RENDER OF WEIGHT ROOM

Recreation Multimedia Room



KEY PLAN

- Recreation Multimedia Room
- Includes: space for existing pool and foosball tables, three wall mounted video game stations, table and seating area and storage for board games and assorted toys.

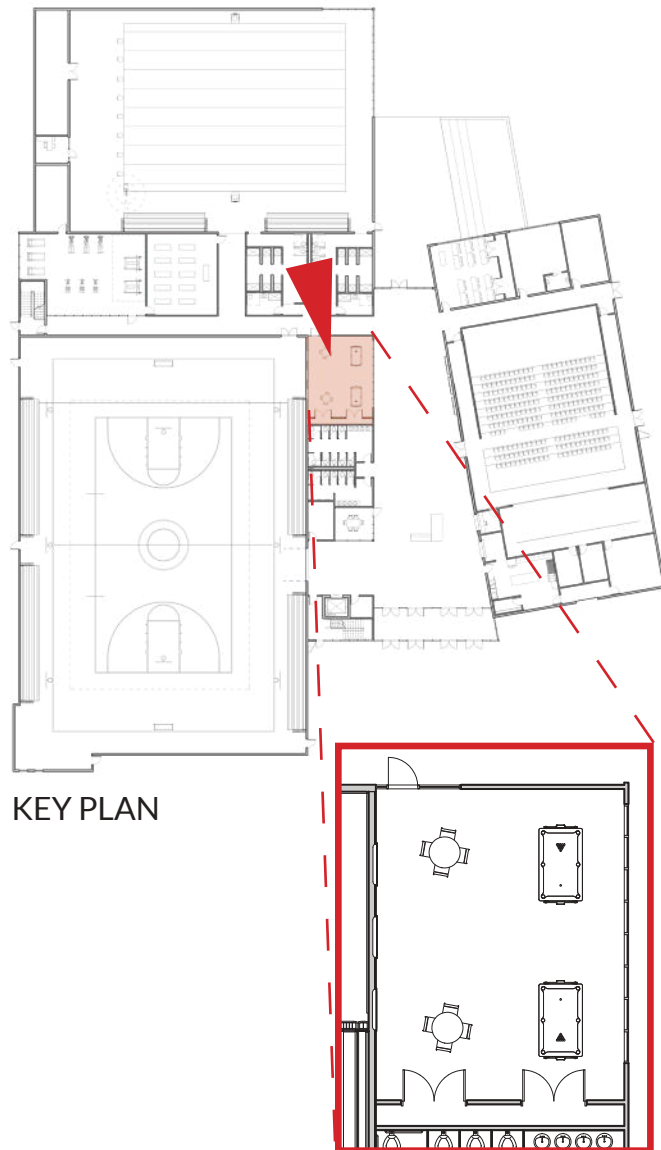


GROUND FLOOR PLAN

Recreation Multimedia Room



STARCK
ARCHITECTS



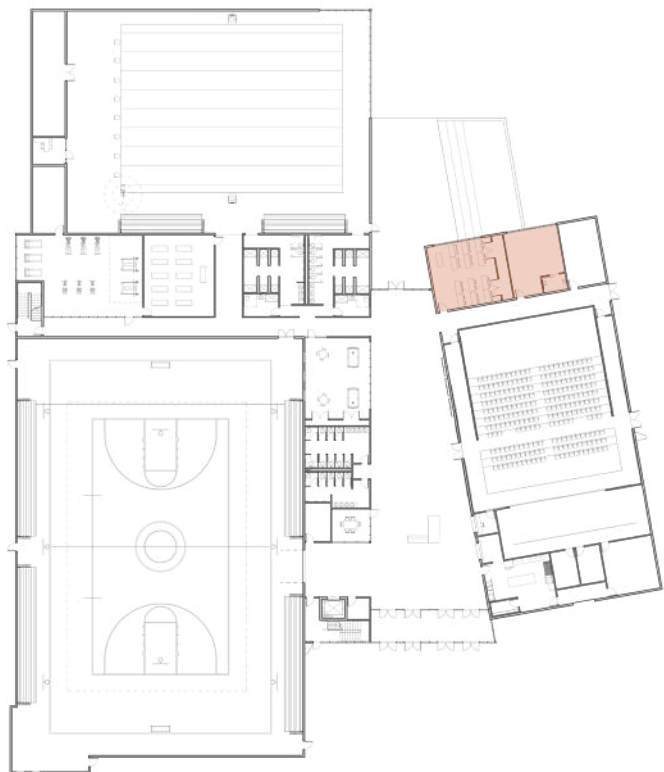
KEY PLAN

- Recreation Multimedia Room
- Includes: space for existing pool and foosball tables, three wall mounted video game stations, table and seating area and storage for board games and assorted toys.



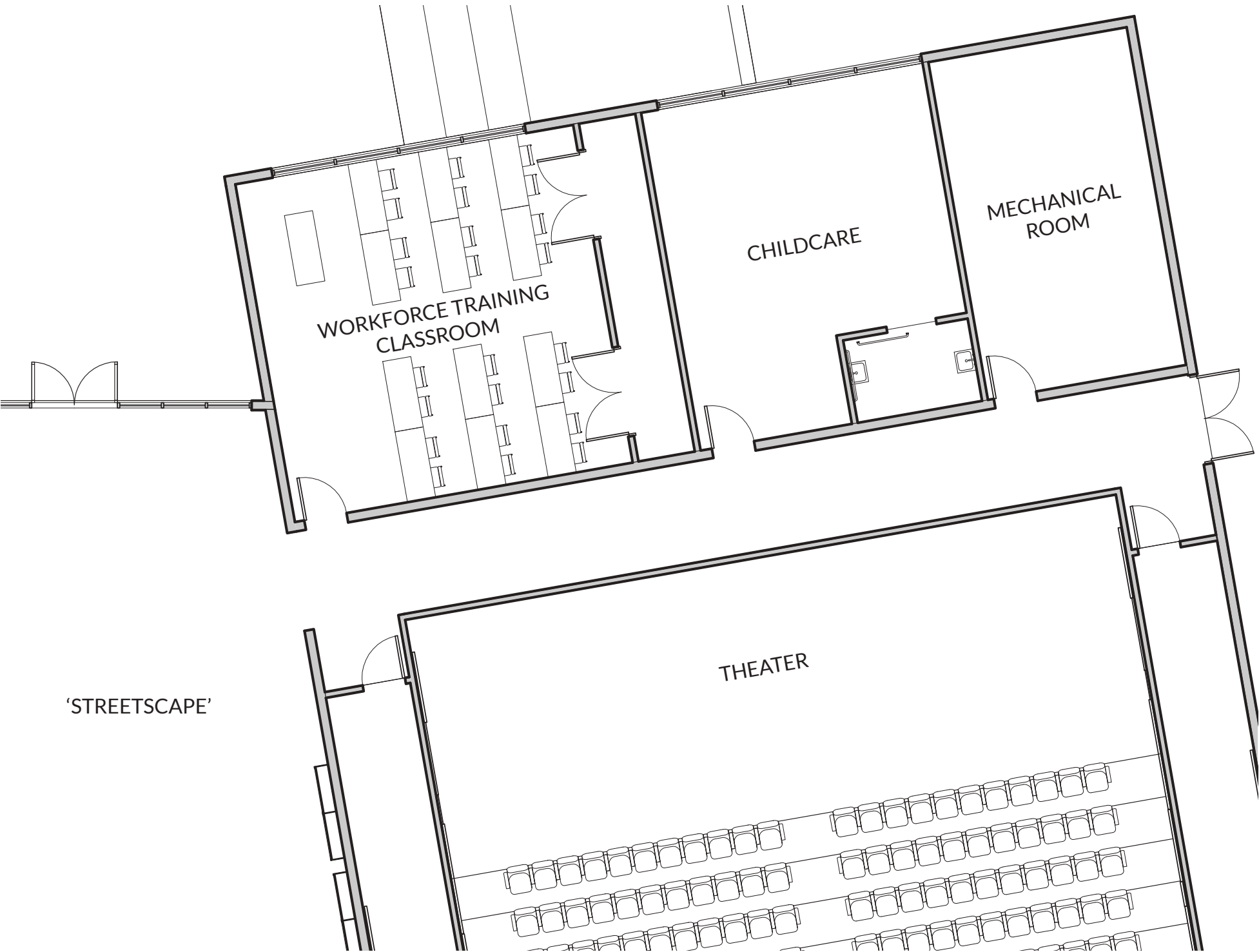
INTERIOR RENDER OF ENTERTAINMENT ROOM

Workforce Training + Educational Development



KEY PLAN

- Flexible space to support Recreational Department, Library, after school youth programs and job trainings.
- Includes: seating and desk space for 24 and storage space for furniture.

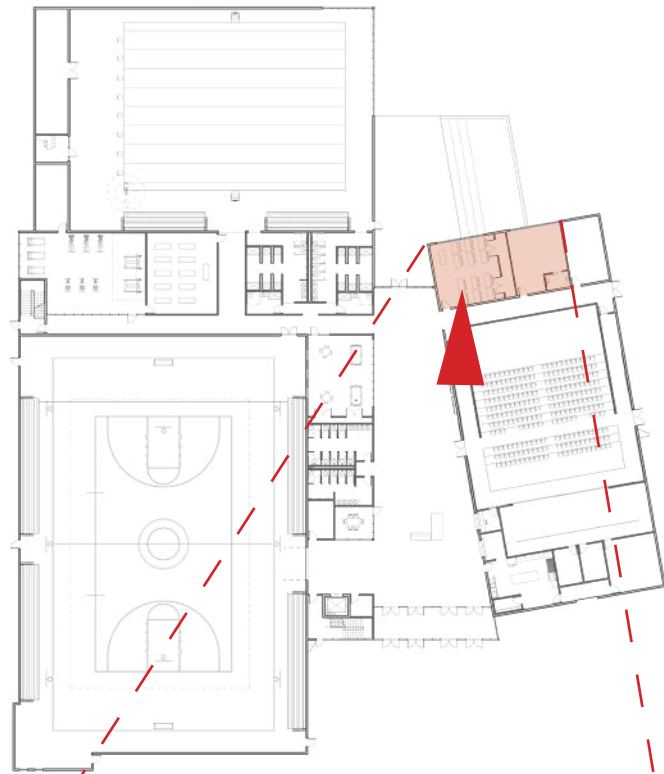


GROUND FLOOR PLAN

Workforce Training + Educational Development



STARCK
ARCHITECTS



KEY PLAN



WORKFORCE TRAINING SPACE



CHILDCARE SPACE

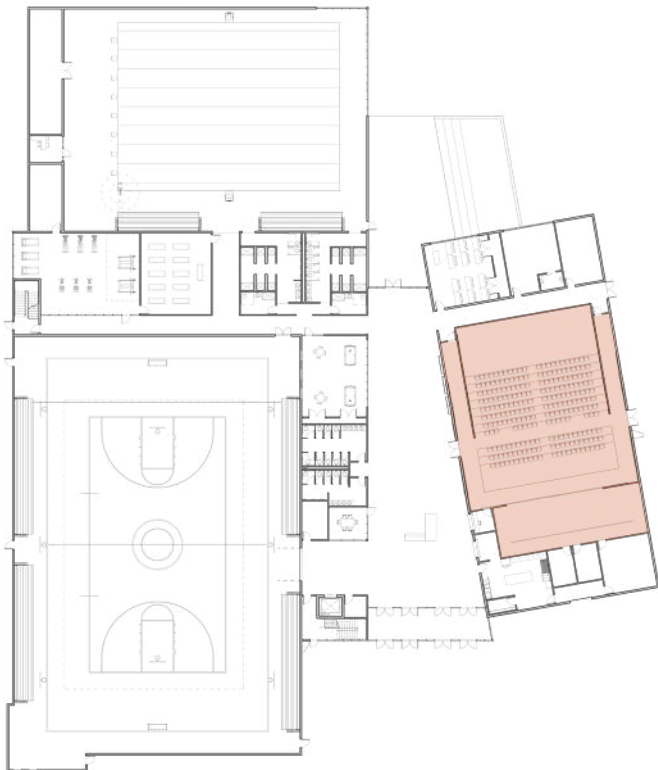
- Flexible space to support Recreational Department, Library, after school youth programs and job trainings.
- Includes: seating and desk space for 24 and storage space for furniture.



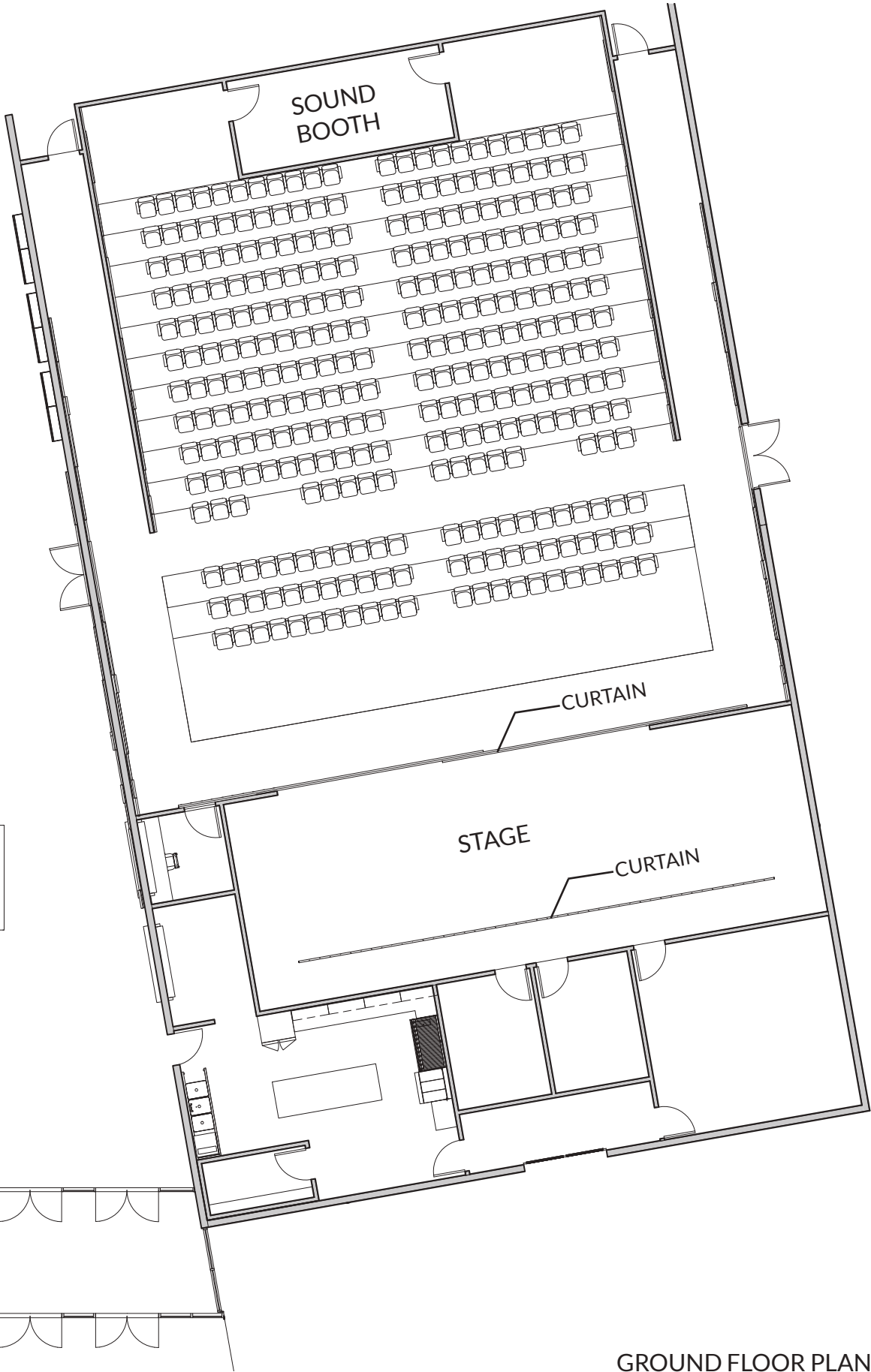
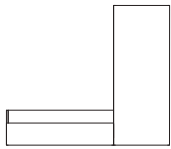
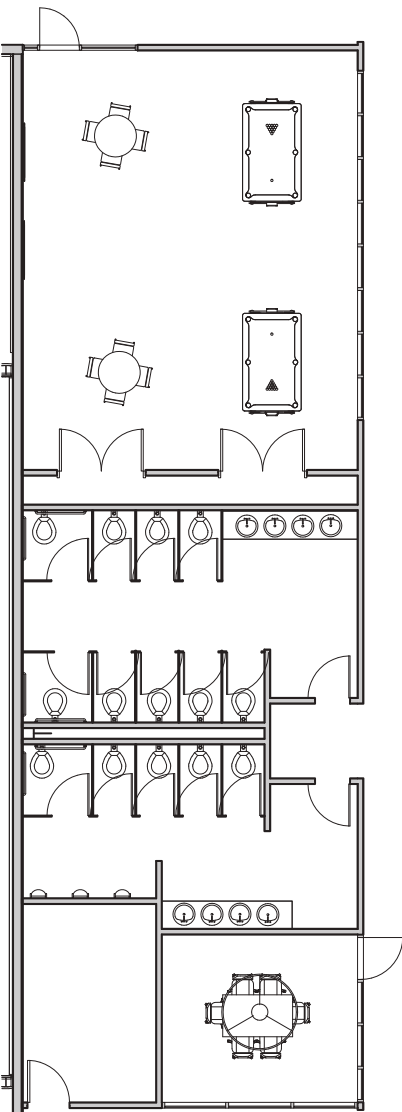
Community Performing Arts / Educational Seminar Space



STARCK
ARCHITECTS



KEY PLAN



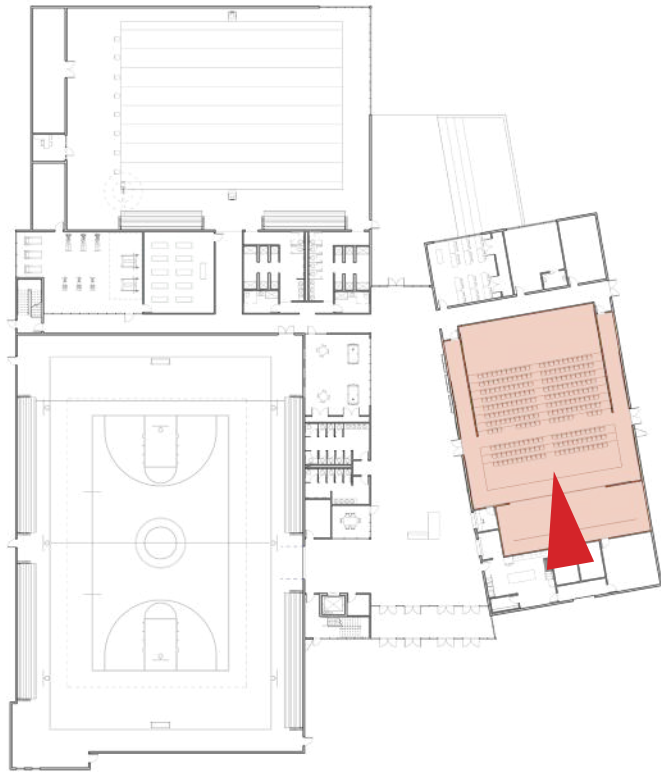
- Includes:
- 300+ Seat Auditorium
 - Sound Booth
 - 55' x 20' Stage
 - Sound absorbent wall and ceiling materials

GROUND FLOOR PLAN

Community Performing Arts / Educational Seminar Space



STARCK
ARCHITECTS



KEY PLAN

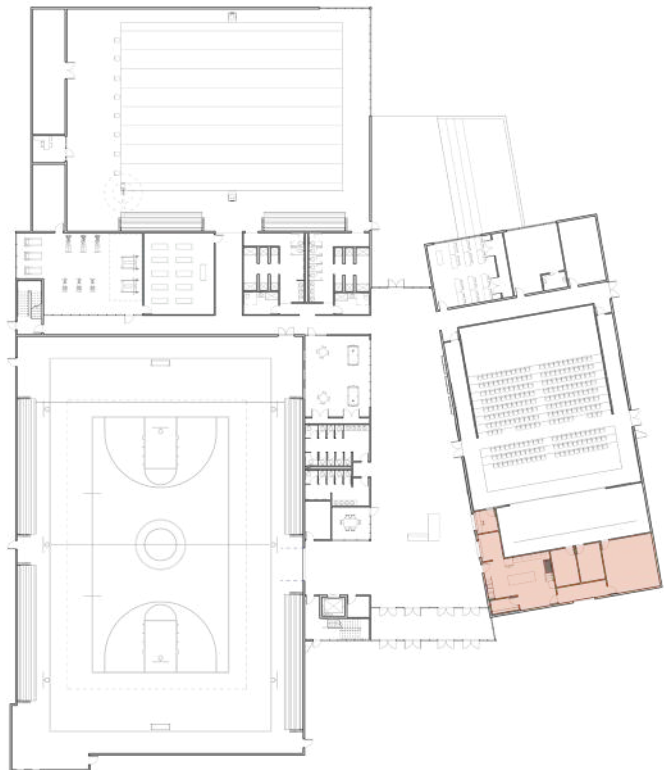
Includes:

- 300+ Seat Auditorium
- Sound Booth
- 55' x 20' Stage
- Sound absorbent wall and ceiling materials



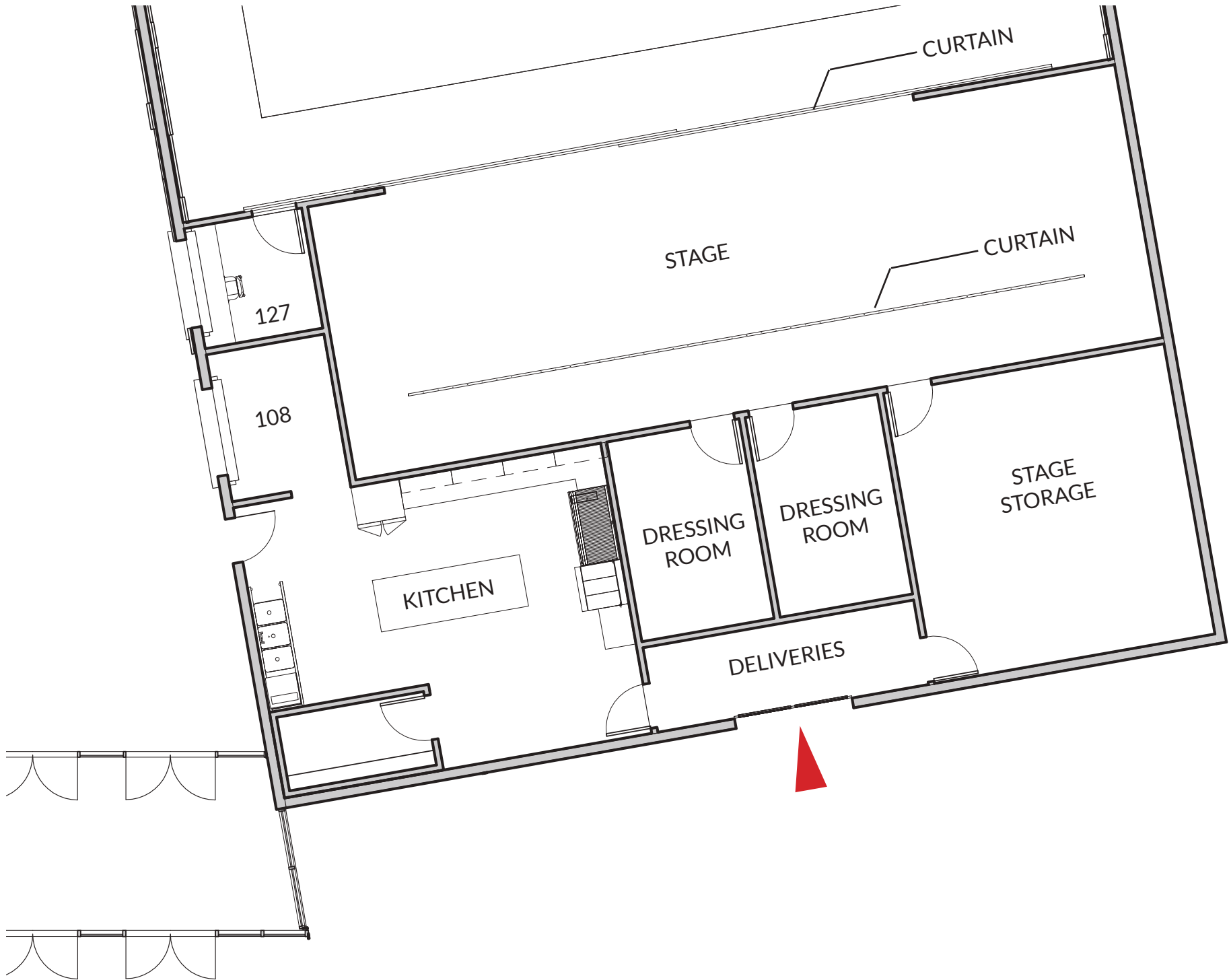
INTERIOR RENDER OF PERFORMING ARTS / SEMINAR SPACE

Community Development Support Spaces



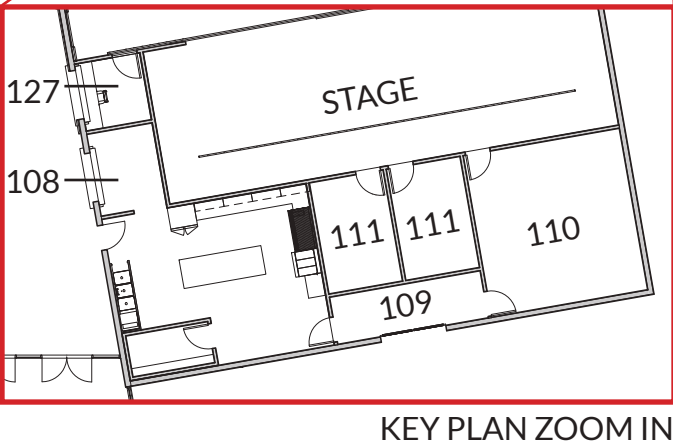
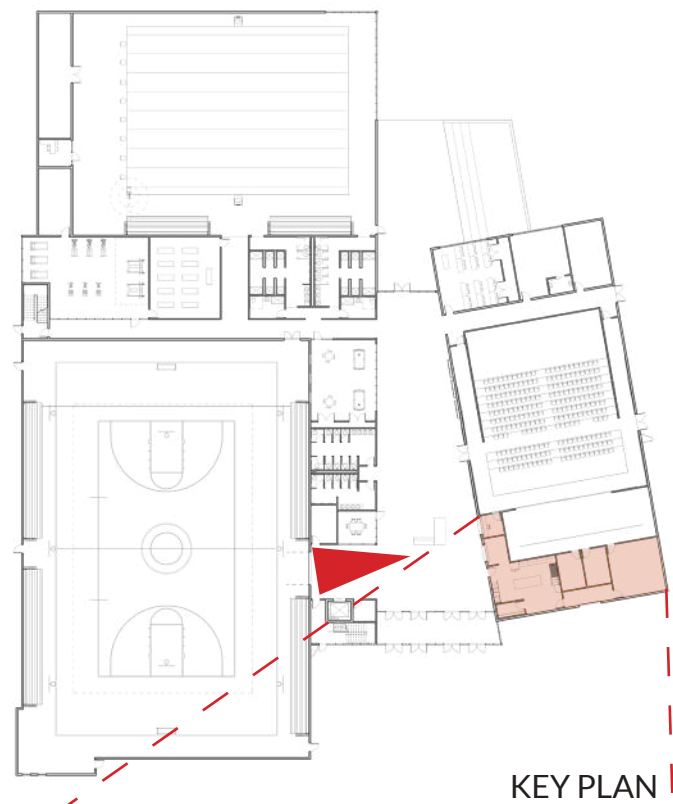
KEY PLAN

- 127 - Ticket Booth
- 108 - Commercial Kitchen and
Snack window
- 109 - Delivery Area
- 110 - Stage Storage
- 111 - Dressing rooms



GROUND FLOOR PLAN

Community Development Support Spaces



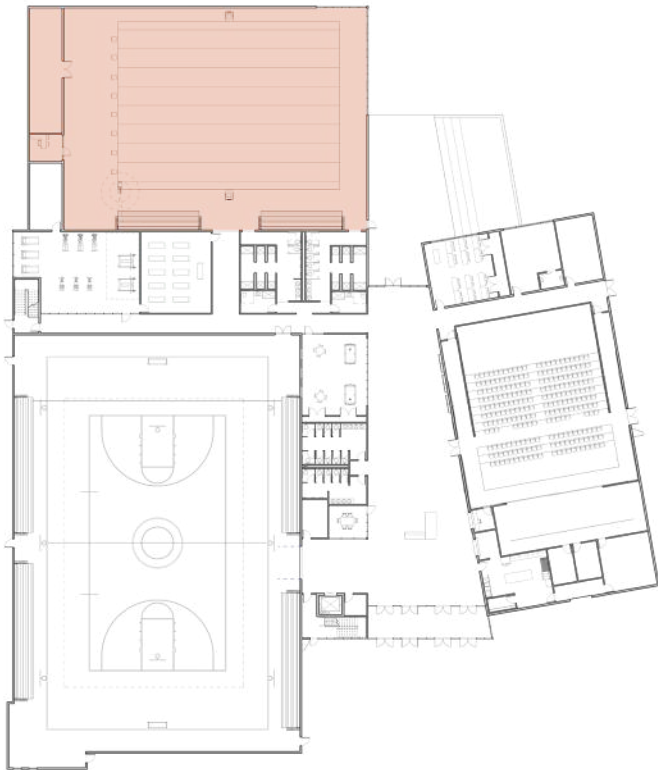
- 127 - Ticket Booth
- 108 - Commercial Kitchen and Snack window
- 109 - Delivery Area
- 110 - Stage Storage
- 111 - Dressing rooms



Aquatic Facility

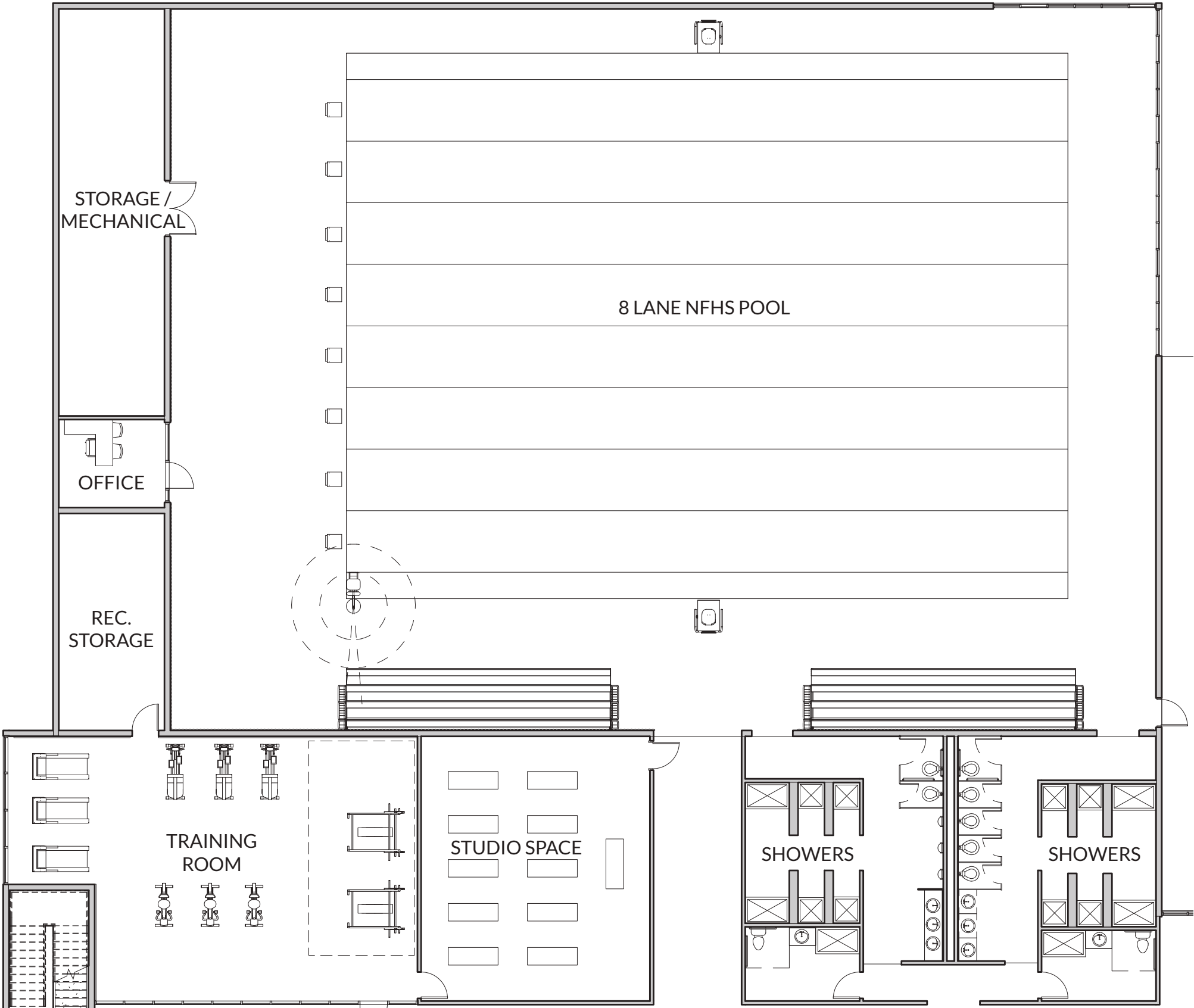


STARCK
ARCHITECTS



KEY PLAN

- NFHS regulated 8 lane pool
- Direct access to all gender restrooms and bathing facilities
- Administrative area for oversight
- Spectator Bleachers
- Lifeguard stations
- ADA aquatic lift

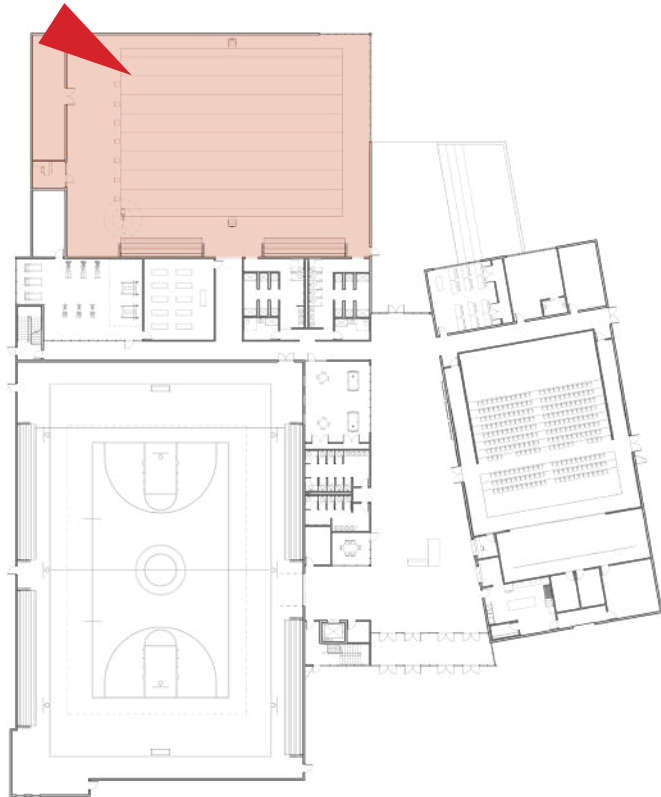


GROUND FLOOR PLAN

Aquatic Facility



STARCK
ARCHITECTS



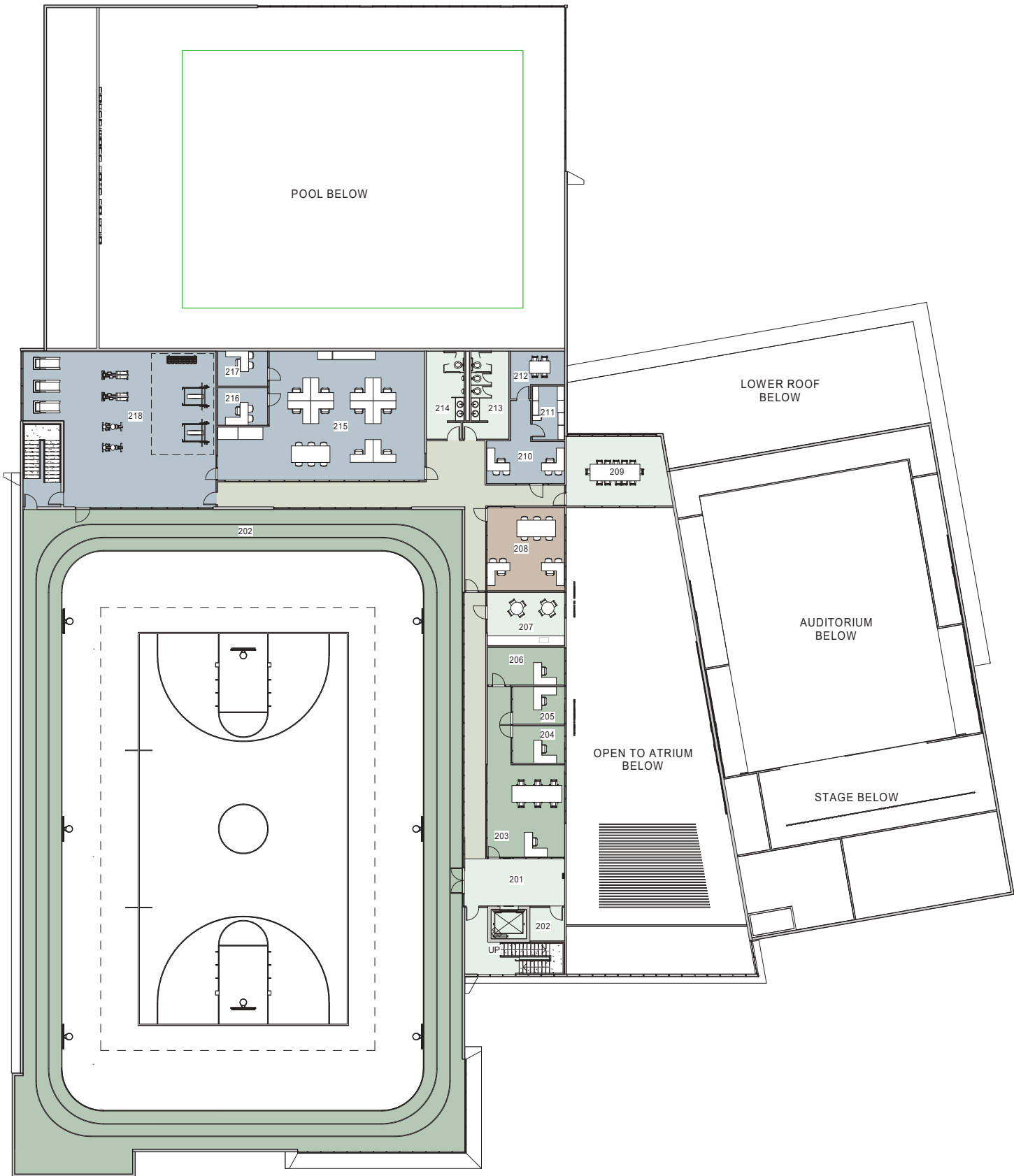
KEY PLAN

- NFHS regulated 8 lane pool
- Direct access to all gender restrooms and bathing facilities
- Administrative area for oversight
- Spectator Bleachers
- Lifeguard stations
- ADA aquatic lift

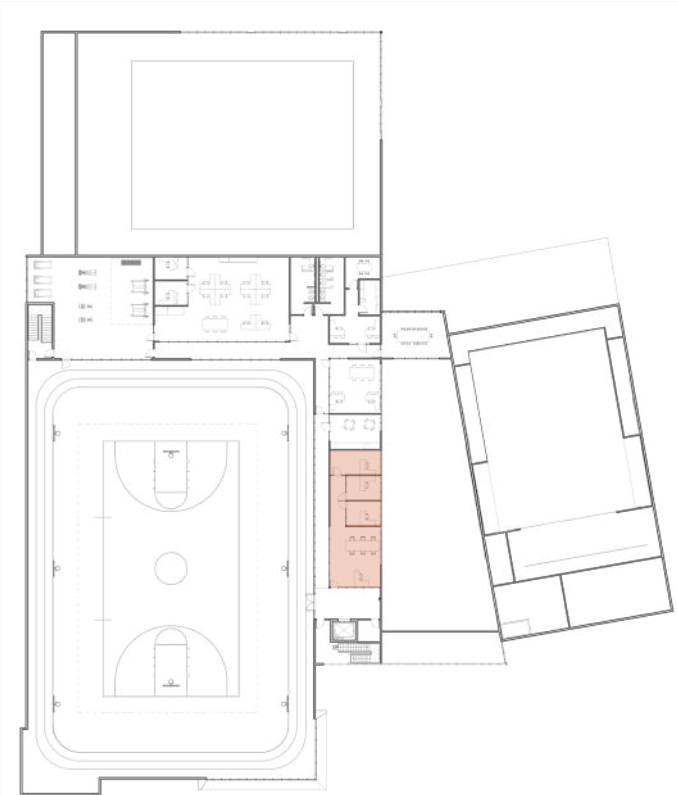


INTERIOR RENDER OF POOL

Proposed Second Floor Plan

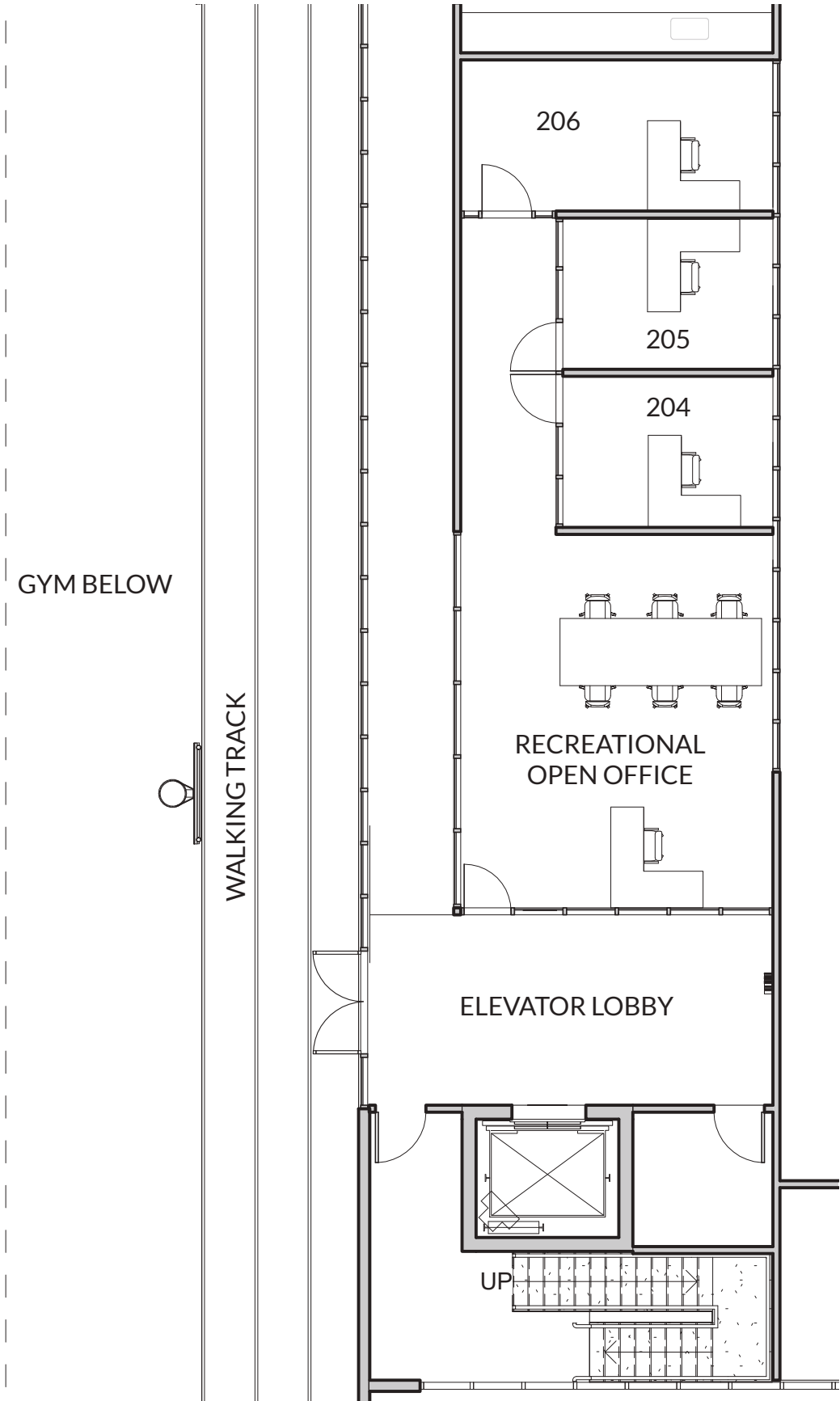


Recreational Offices



KEY PLAN

- 203 - Open office and work stations for PT staff/volunteers and administrative assistant
- 204 - Recreation Supervisor Office
- 205 - Carousel Manager Office
- 206 - Recreation Director Office

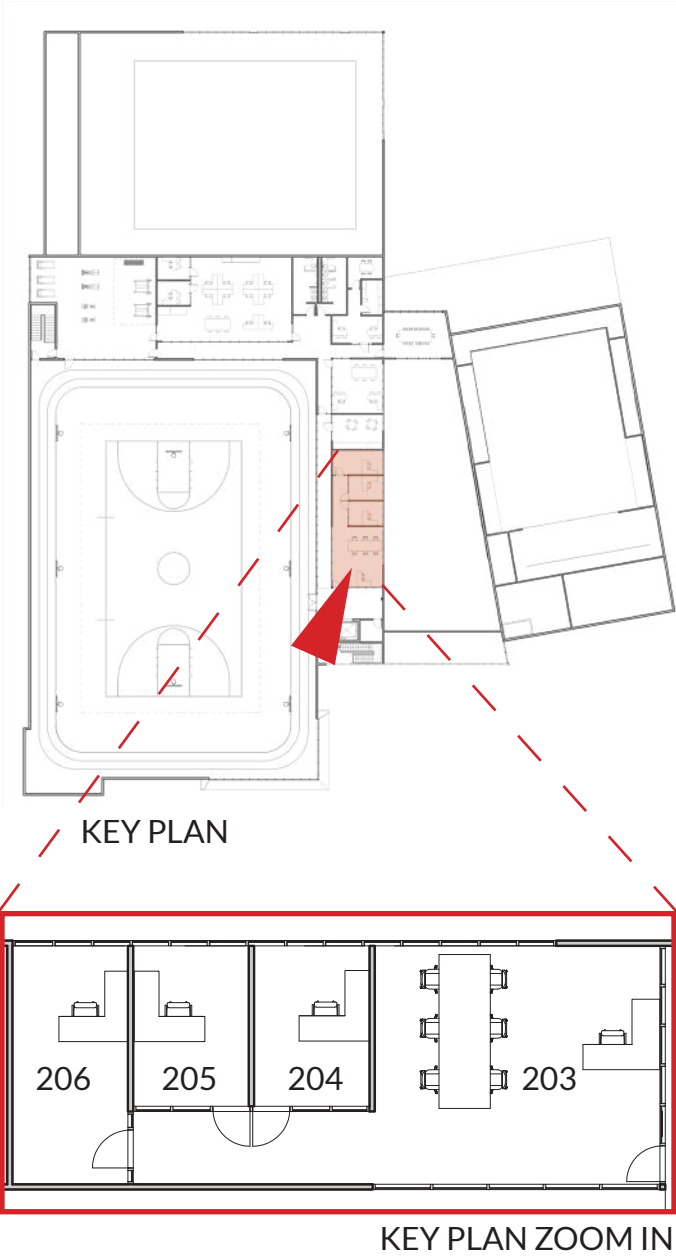


SECOND FLOOR PLAN

Recreational Offices



STARCK
ARCHITECTS



- 203 - Open office and work stations for PT staff/volunteers and administrative assistant
- 204 - Recreation Supervisor Office
- 205 - Carousel Manager Office
- 206 - Recreation Director Office

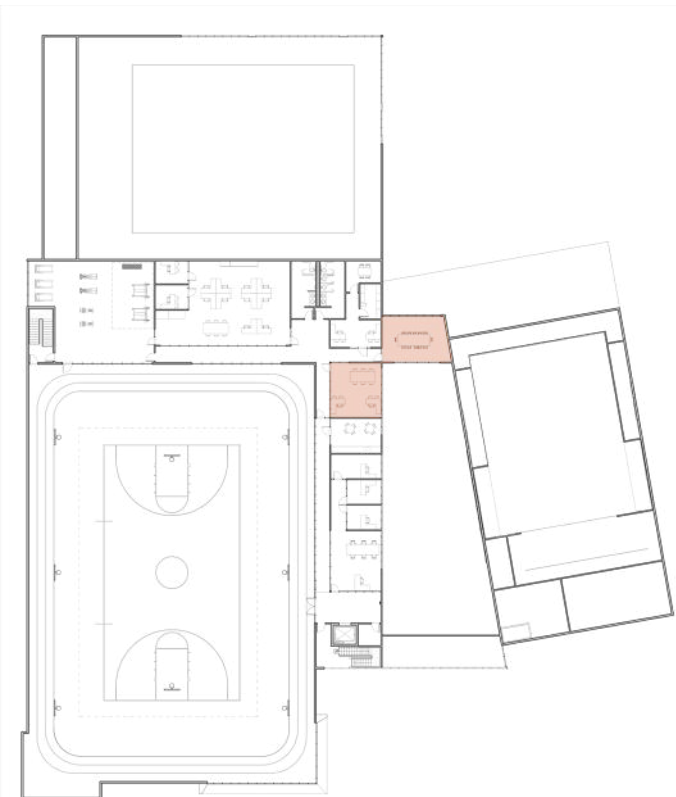


INTERIOR RENDER OF RECREATIONAL OFFICES

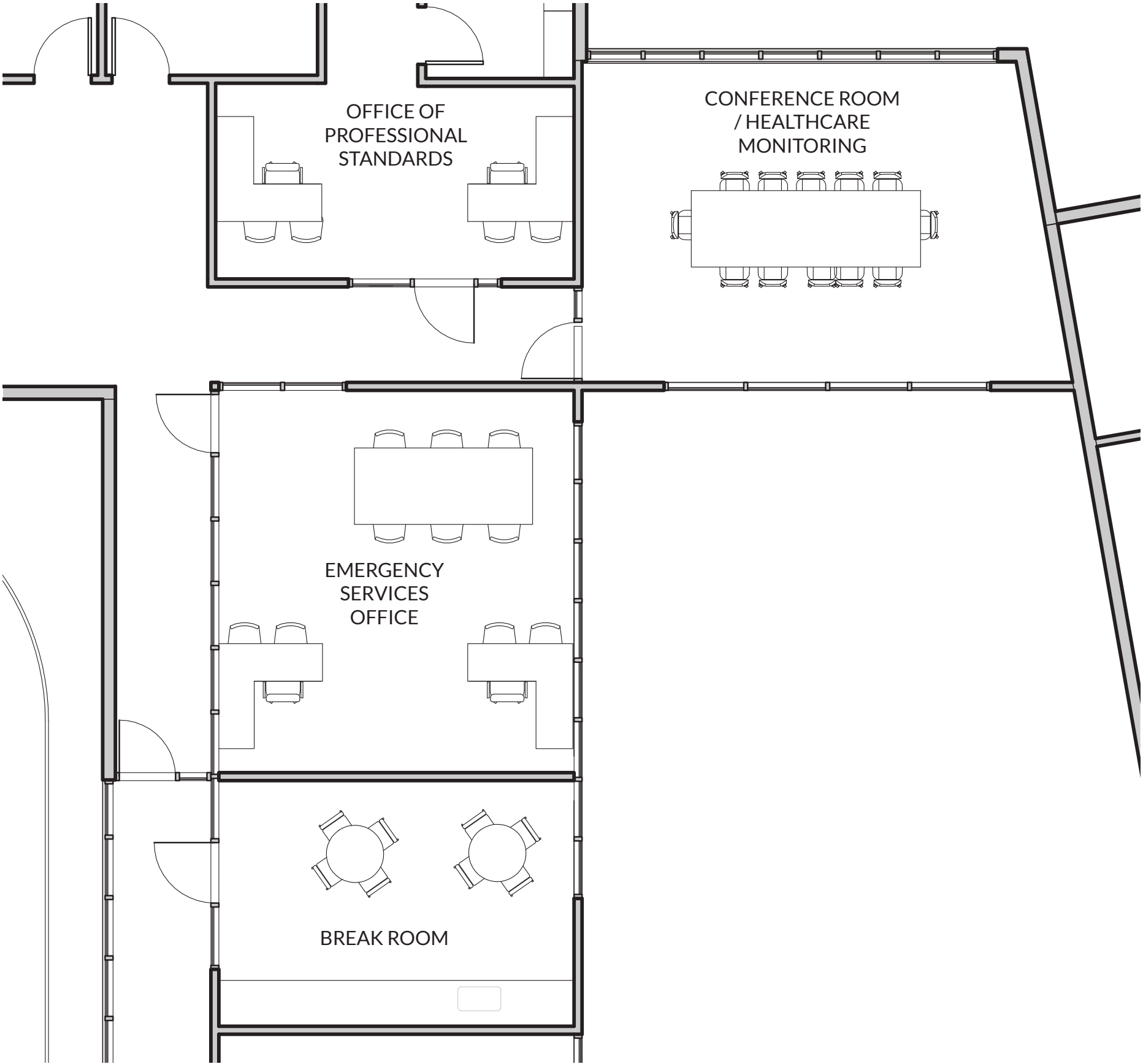
Emergency Management Office / Conference Room



STARCK
ARCHITECTS

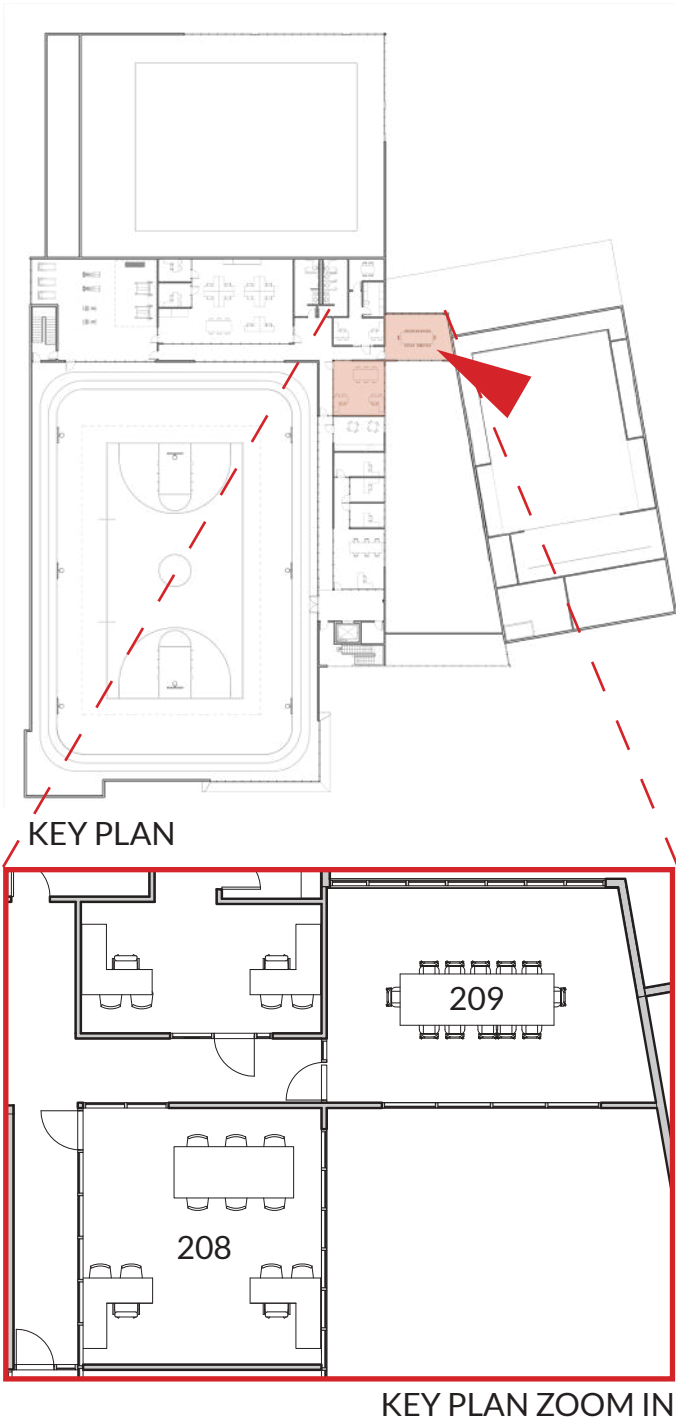


KEY PLAN



SECOND FLOOR PLAN

Emergency Management Office / Conference Room

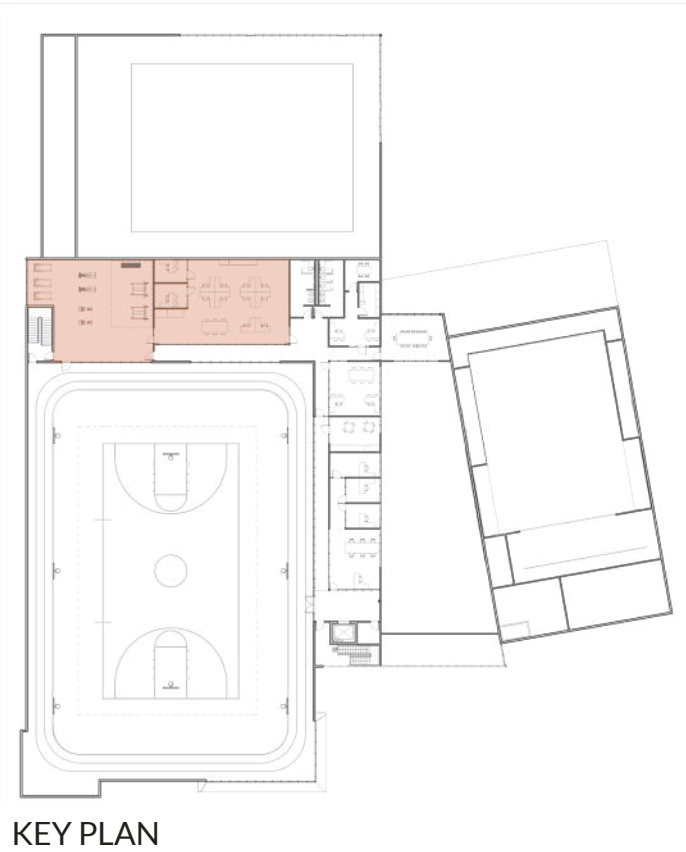


208 - EMA Office
209 - Flexible Conference room for 12
People

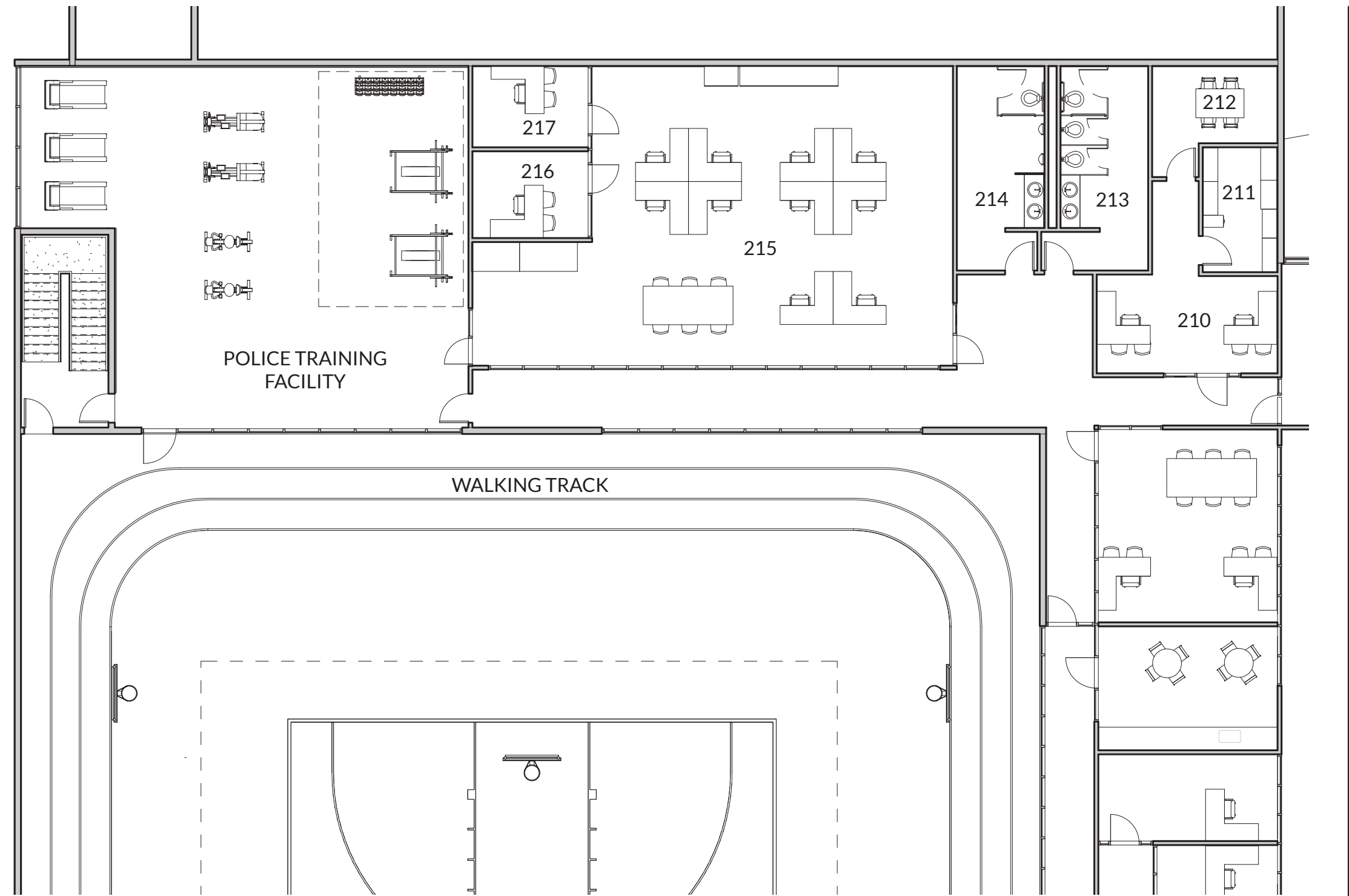


INTERIOR RENDER OF CONFERENCE ROOM

Public Safety - Police

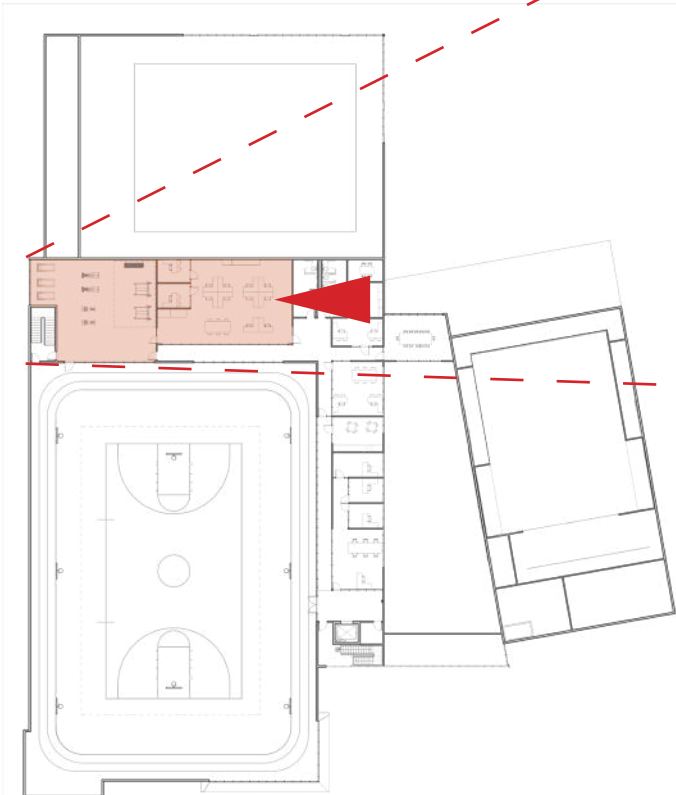


- 210 - Office of Professional Standards
- 211 - OPS Storage
- 212 - OPS Meeting Room
- 213 - Restroom
- 214 - Restroom
- 215 - Open office work stations
for Planning and Training Unit and
Community Policing Unit.
- 216 - Police Sargent's Office
- 217 - Planning and Training Captain's
Office
- 218 - Police Training Facility

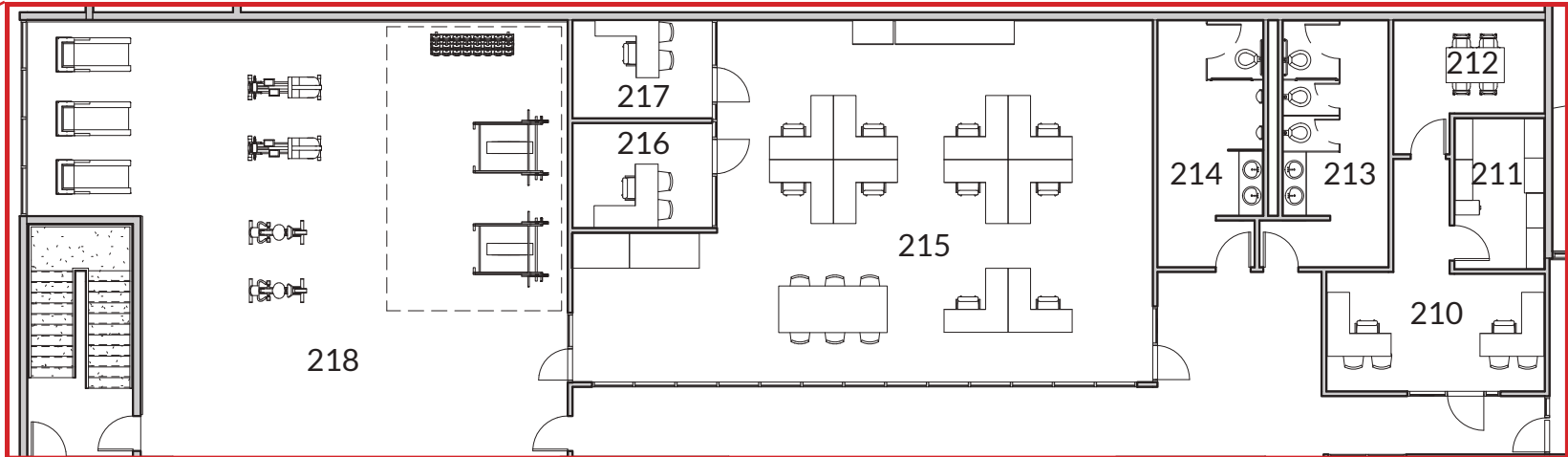


SECOND FLOOR PLAN

Public Safety - Police



KEY PLAN



KEY PLAN ZOOM IN

- 210 - Professional Standards Office
- 211 - OPS Storage
- 212 - OPS Meeting Room
- 213 - Restroom
- 214 - Restroom
- 215 - Open office work stations for Planning and Training Unit and Community Policing Unit.
- 216 - Police Sargent’s Office
- 217 - Planning and Training Captain’s Office
- 218 - Police Training Facility

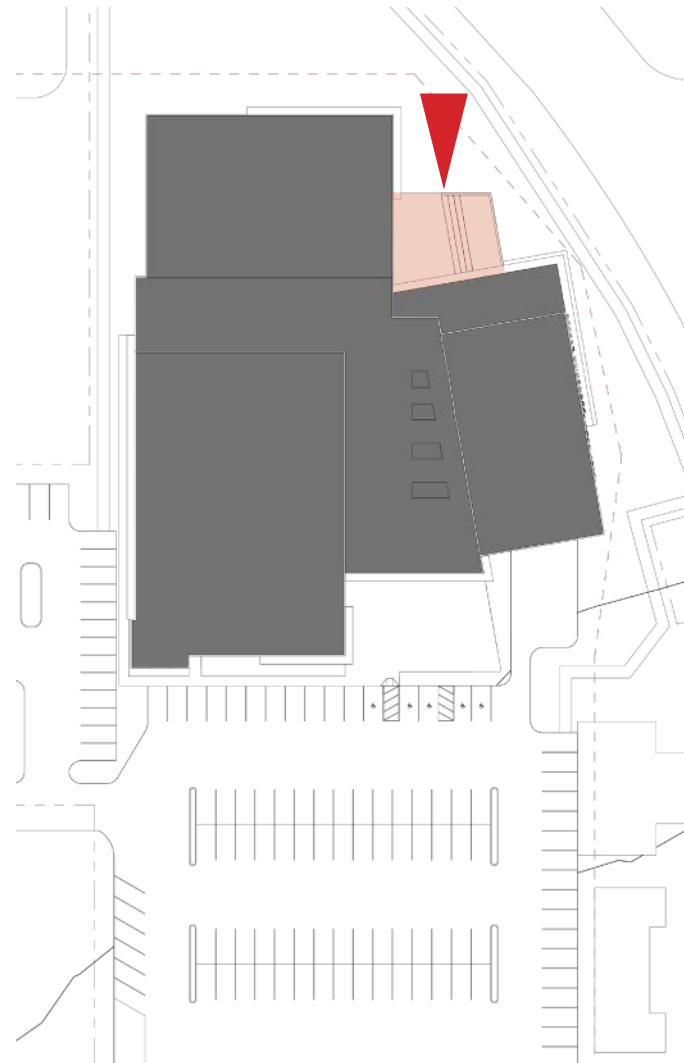


INTERIOR RENDER OF POLICE OPEN OFFICE

Exterior Patio / Amphitheater



STARCK
ARCHITECTS



KEY PLAN

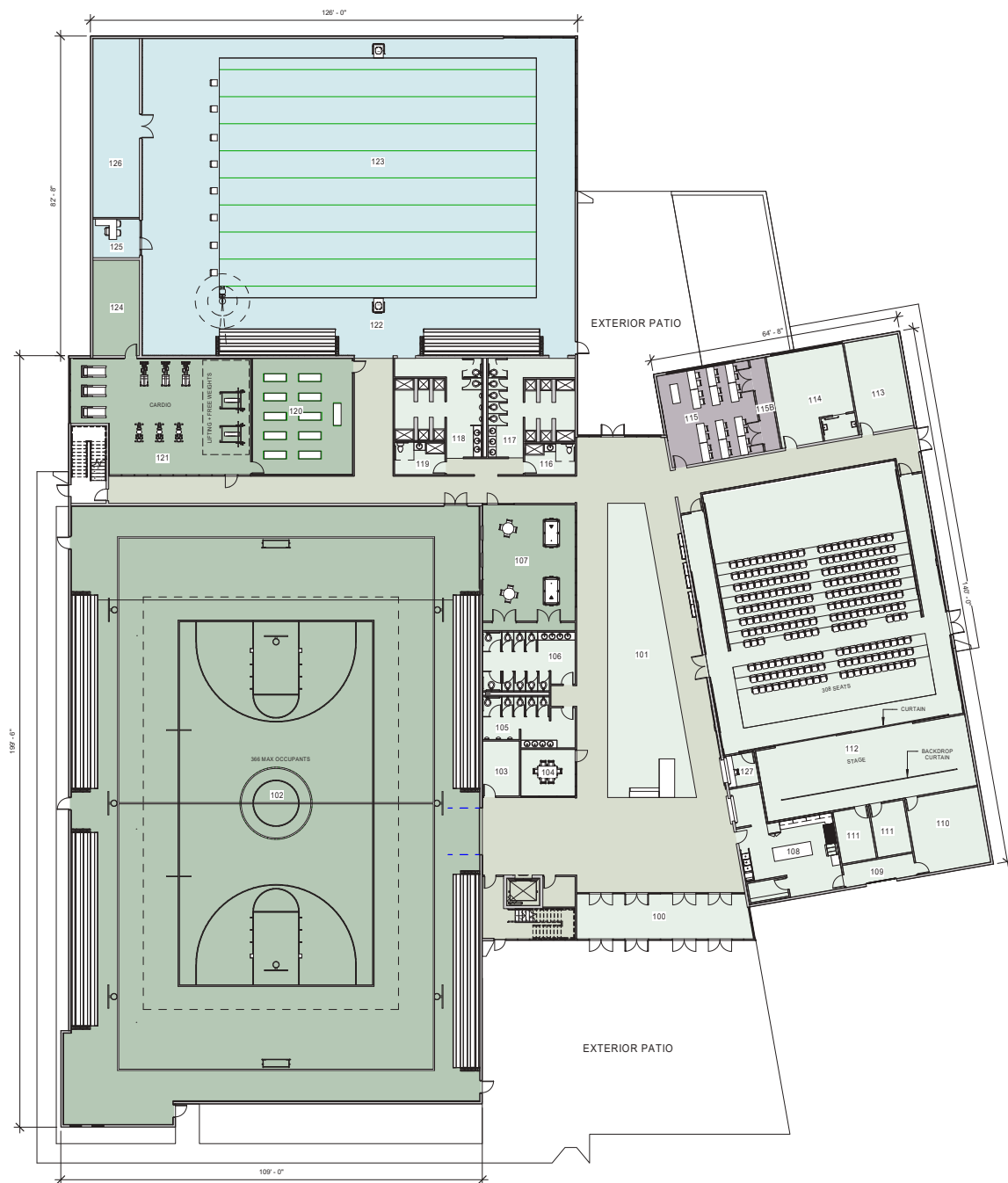


- Outdoor Classroom
- Public Meetings
- Event Platform

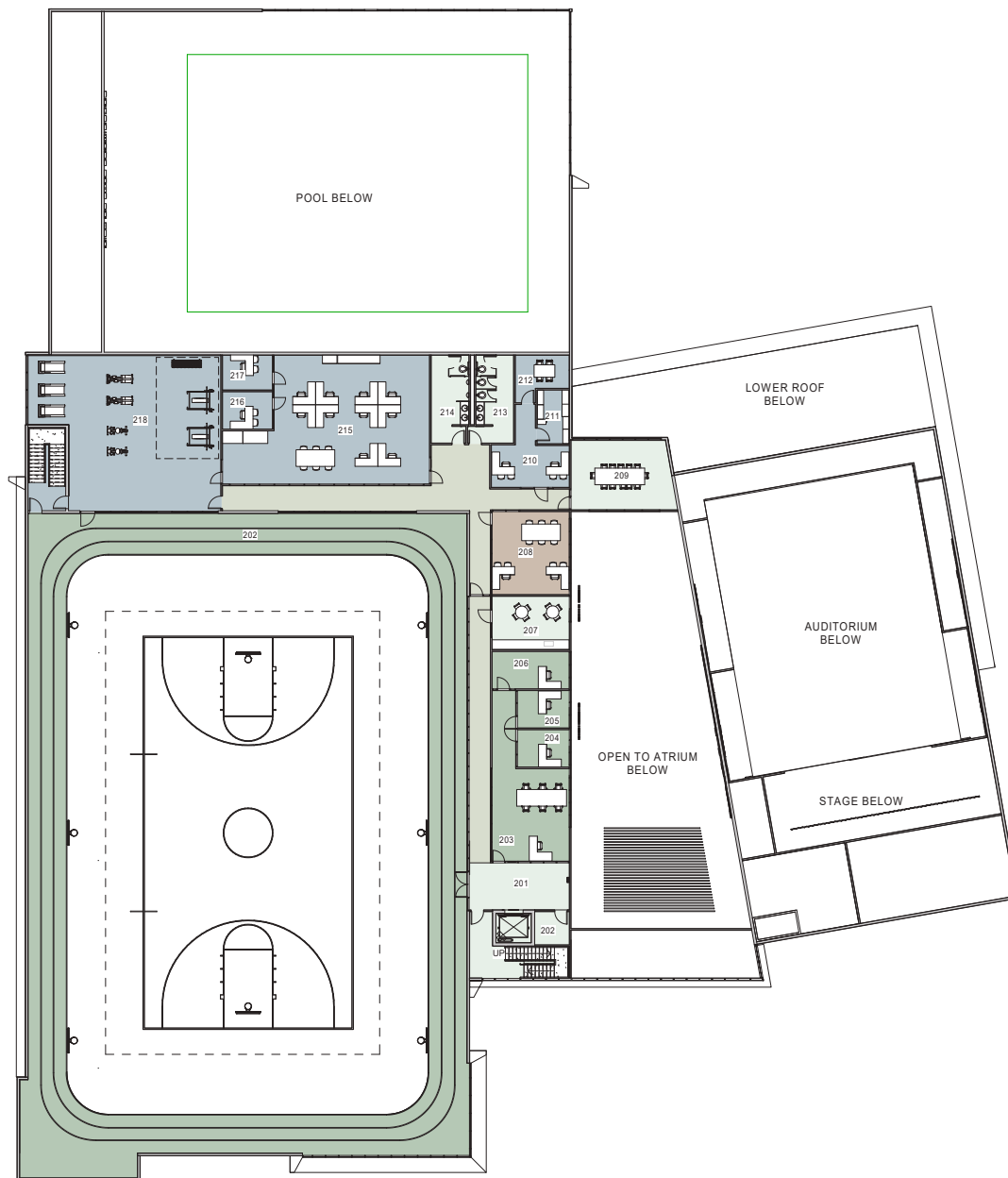
EXTERIOR RENDER OF AMPHITHEATER



STARCK
ARCHITECTS



1 PROPOSED GROUND LEVEL
SCALE: 1/16" = 1'-0"
TOTAL FLOOR AREA: 48,560 SF



2 PROPOSED SECOND LEVEL
SCALE: 1/16" = 1'-0"
TOTAL FLOOR AREA: 13,440 SF

ROOM SCHEDULE		
NUMBER	NAME	AREA
CIRCULATION		
	LOWER CIRCULATION	5285 SF
	UPPER CIRCULATION	1045 SF
FIRE DEPARTMENT		
208	EMA READINESS OFFICE	372 SF
POLICE		
210	PROFESSIONAL STANDARDS OFFICE	238 SF
211	OPS STORAGE	100 SF
212	OPS MEETING ROOM	121 SF
215	POLICE OPEN OFFICE	1322 SF
216	POLICE SARGENT OFFICE	108 SF
217	P+T CAPTAIN'S OFFICE	101 SF
218	WORKFORCE TRAINING FACILITY	1734 SF
POOL		
122	POOL DECK	4121 SF
123	POOL	5084 SF
125	POOL OFFICE	120 SF
126	POOL STORAGE	555 SF
LIBRARY		
115	LIBRARIAN EDUCATOR PROGRAM SPACE	576 SF
115B	LIBRARY STORAGE	96 SF
RECREATION		
102	GYMNASIUM	16476 SF
107	GAME ROOM	778 SF
120	FITNESS STUDIO	782 SF
121	TRAINING FACILITY	1272 SF
124	STORAGE	296 SF
202	WALKING TRACK	4903 SF
203	ADMINISTRATION OPEN OFFICE	524 SF
204	CAROUSEL MANAGER'S OFFICE	113 SF
205	RECREATION SUPERVISOR'S OFFICE	113 SF
206	RECREATION DIRECTOR'S OFFICE	167 SF
SHARED		
100	VESTIBULE	510 SF
101	STREET SCAPE	1240 SF
103	STORAGE	135 SF
104	MEETING ROOM	168 SF
105	RESTROOM - MEN	272 SF
106	RESTROOM - WOMEN	348 SF
108	KITCHEN	564 SF
109	RECEIVING AREA	106 SF
110	AUDITORIUM STORAGE	377 SF
111	GREEN ROOM	250 SF
112	EDUCATION ENHANCEMENT AUDITORIUM	5197 SF
113	MECHANICAL ROOM	338 SF
114	CHILD CARE	480 SF
116	GENDER NEUTRAL RESTROOMS	104 SF
117	RESTROOM - WOMEN	520 SF
118	RESTROOM - MEN	516 SF
119	GENDER NEUTRAL RESTROOMS	109 SF
127	TICKET BOOTH	65 SF
201	LOBBY	643 SF
202	MECHANICAL ROOM	Redundant Room
207	BREAK ROOM	239 SF
209	MEETING ROOM	406 SF
213	RESTROOM - WOMEN	199 SF
214	RESTROOM - MEN	188 SF
TOTAL BUILDING AREA: 62,000 SF (GROSS)		



STARCK
ARCHITECTS

Walk-through Animation

Location 1	Quantity	Unit Cost	Total Cost
AUDITORIUM	61,310 SF	\$114.24 / SF	\$7,004,349
03 CONCRETE		\$6.79 / SF	\$416,513
04 MASONRY		\$7.52 / SF	\$460,811
05 METALS		\$16.96 / SF	\$1,039,717
06 WOOD, PLASTICS, & COMPOSITES		\$1.06 / SF	\$64,804
07 THERMAL & MOISTURE PROTECTION		\$15.30 / SF	\$938,308
08 OPENINGS		\$8.05 / SF	\$493,786
09 FINISHES		\$12.40 / SF	\$760,465
10 SPECIALTIES		\$0.39 / SF	\$24,142
11 EQUIPMENT		\$8.16 / SF	\$500,559
12 FURNISHINGS		\$6.03 / SF	\$369,516
21 FIRE SUPPRESSION		\$1.03 / SF	\$62,918
22 PLUMBING		\$5.22 / SF	\$319,869
23 HEATING, VENTILATING, & AIR CONDITIONING (HVAC)		\$16.14 / SF	\$989,433
26 ELECTRICAL		\$8.07 / SF	\$494,839
27 COMMUNICATIONS		\$0.20 / SF	\$12,295
28 ELECTRONIC SAFETY & SECURITY		\$0.67 / SF	\$41,127
32 EXTERIOR IMPROVEMENTS		\$0.12 / SF	\$7,426
33 UTILITIES		\$0.13 / SF	\$7,822
FITNESS & ADMIN CENTER	61,310 SF	\$310.01 / SF	\$19,006,538
03 CONCRETE		\$19.08 / SF	\$1,169,869
04 MASONRY		\$9.16 / SF	\$561,451
05 METALS		\$43.64 / SF	\$2,675,430
06 WOOD, PLASTICS, & COMPOSITES		\$3.13 / SF	\$191,836
07 THERMAL & MOISTURE PROTECTION		\$52.50 / SF	\$3,218,600
08 OPENINGS		\$26.29 / SF	\$1,612,026
09 FINISHES		\$52.71 / SF	\$3,231,456
10 SPECIALTIES		\$2.29 / SF	\$140,128
11 EQUIPMENT		\$2.81 / SF	\$172,114
14 CONVEYING EQUIPMENT		\$2.80 / SF	\$171,908
21 FIRE SUPPRESSION		\$4.68 / SF	\$286,811
22 PLUMBING		\$17.76 / SF	\$1,088,622
23 HEATING, VENTILATING, & AIR CONDITIONING (HVAC)		\$38.94 / SF	\$2,387,126
26 ELECTRICAL		\$30.14 / SF	\$1,847,609
27 COMMUNICATIONS		\$0.85 / SF	\$52,380
28 ELECTRONIC SAFETY & SECURITY		\$3.25 / SF	\$199,172
32 EXTERIOR IMPROVEMENTS		\$0.00 / SF	\$0
33 UTILITIES		\$0.00 / SF	\$0

POOL	61,310 SF	\$117.19 / SF	\$7,184,693
03 CONCRETE		\$4.34 / SF	\$266,269
04 MASONRY		\$3.80 / SF	\$233,143
05 METALS		\$12.31 / SF	\$754,819
06 WOOD, PLASTICS, & COMPOSITES		\$0.53 / SF	\$32,561
07 THERMAL & MOISTURE PROTECTION		\$15.34 / SF	\$940,443
08 OPENINGS		\$6.63 / SF	\$406,474
09 FINISHES		\$6.23 / SF	\$382,084
10 SPECIALTIES		\$0.17 / SF	\$10,131
11 EQUIPMENT		\$0.22 / SF	\$13,695
13 SPECIAL CONSTRUCTION		\$41.92 / SF	\$2,570,000
21 FIRE SUPPRESSION		\$1.56 / SF	\$95,810
22 PLUMBING		\$4.09 / SF	\$250,981
23 HEATING, VENTILATING, & AIR CONDITIONING (HVAC)		\$14.99 / SF	\$919,097
26 ELECTRICAL		\$4.48 / SF	\$274,889
27 COMMUNICATIONS		\$0.12 / SF	\$7,186
28 ELECTRONIC SAFETY & SECURITY		\$0.21 / SF	\$12,575
32 EXTERIOR IMPROVEMENTS		\$0.14 / SF	\$8,375
33 UTILITIES		\$0.10 / SF	\$6,161
SITE	61,310 SF	\$51.83 / SF	\$3,177,531
02 EXISTING CONDITIONS		\$0.00 / SF	\$0
03 CONCRETE		\$1.29 / SF	\$78,848
26 ELECTRICAL		\$3.50 / SF	\$214,862
31 EARTHWORK		\$22.50 / SF	\$1,379,191
32 EXTERIOR IMPROVEMENTS		\$15.56 / SF	\$953,722
33 UTILITIES		\$8.99 / SF	\$550,908
Subtotal Direct Cost		\$593.27 /SF	\$36,373,111
Indirect Costs		Amount	Total Cost
Subtotal			\$32,331,654
Escalation- Excluded		0.00%	\$0
Projected Cost of Work			\$36,373,111
Contractor Related Costs		12.00%	\$3,879,799
Subtotal 2			\$40,252,909
Design Fees		10.00%	\$4,472,545
Total Construction Cost		\$729.50 /SF	\$44,725,455



STARCK
ARCHITECTS



Cost Saving Suggestion	Cost Savings
1. Delete Pool Building (+/- 10,450 GSF).	\$ 8,500,000.00
2. Delete Auditorium (+/- 9,155 GSF).	
A - Delete Auditorium (including training room, mechanical space and child care room.	\$ 7,900,000.00
B - Delete Auditorium however keep training room, child care and mechanical room.	\$ 7,050,000.00
3. Walking Track	
A - Delete Elevated Walking Track except keep offices on 2nd floor	\$ 550,000.00
B - Delete Walking track and expand ground floor gym width by 15ft to provide a ground level walking track	\$ 550,000.00
4. Second Level	
A - Delete second floor and program elements from the project in their entirety except for the walking track, elevators and stairs.	\$ 5,040,000.00
B - Delete second floor, walking track, elevators and stairs from the project in their entirety.	\$ 5,925,000.00
C - Delete second floor and 1st floor shower rooms. Move the 2nd floor office program elements to the ground level. These areas will be located in the entry lobby area and the cost savings shown account for required increases in the ground floor square footage to accommodate the second-level program elements while leaving a corridor for a future pool project at the rear of the building.	\$ 6,555,000.00
5. Delete the exterior patio/amphitheater area	\$ 370,000.00

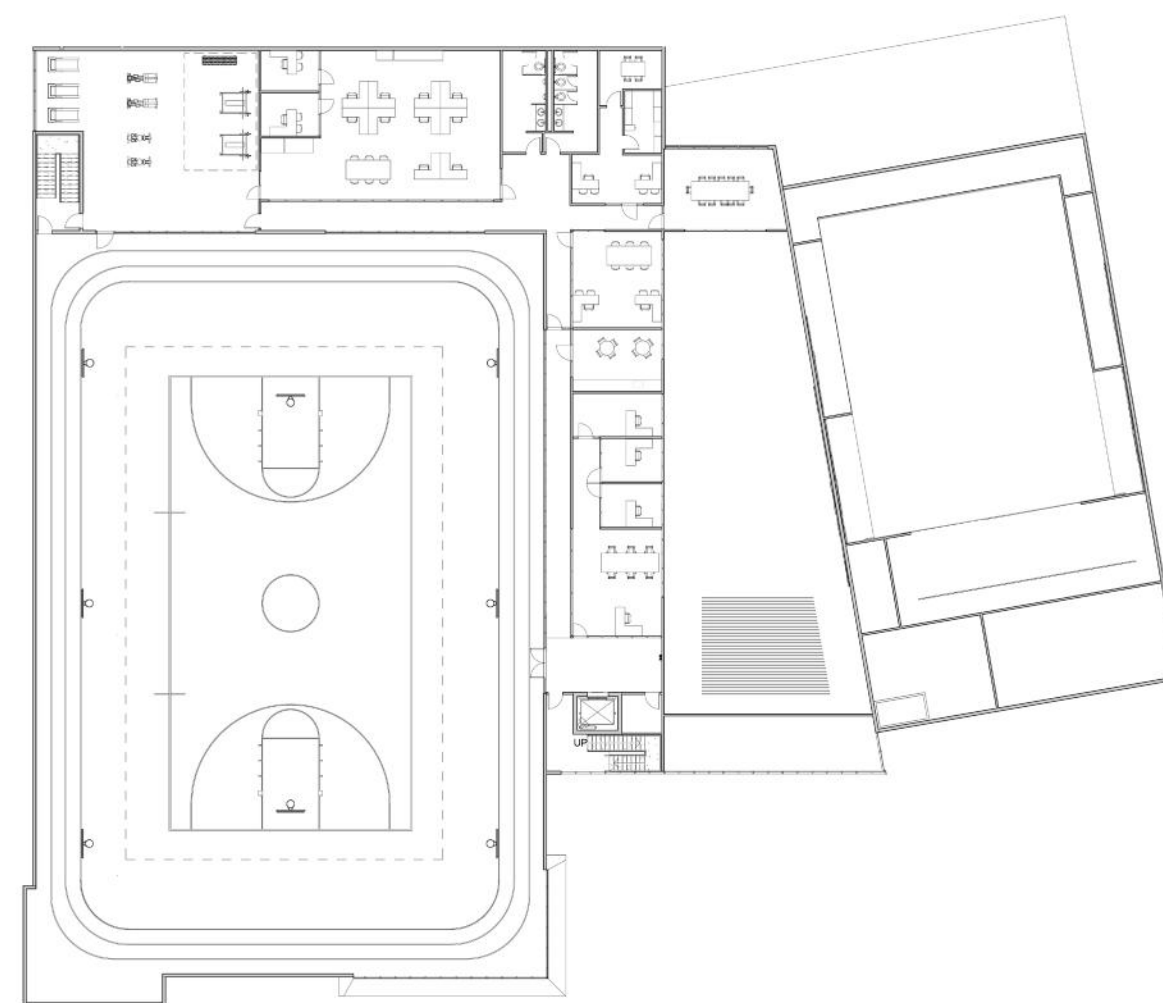
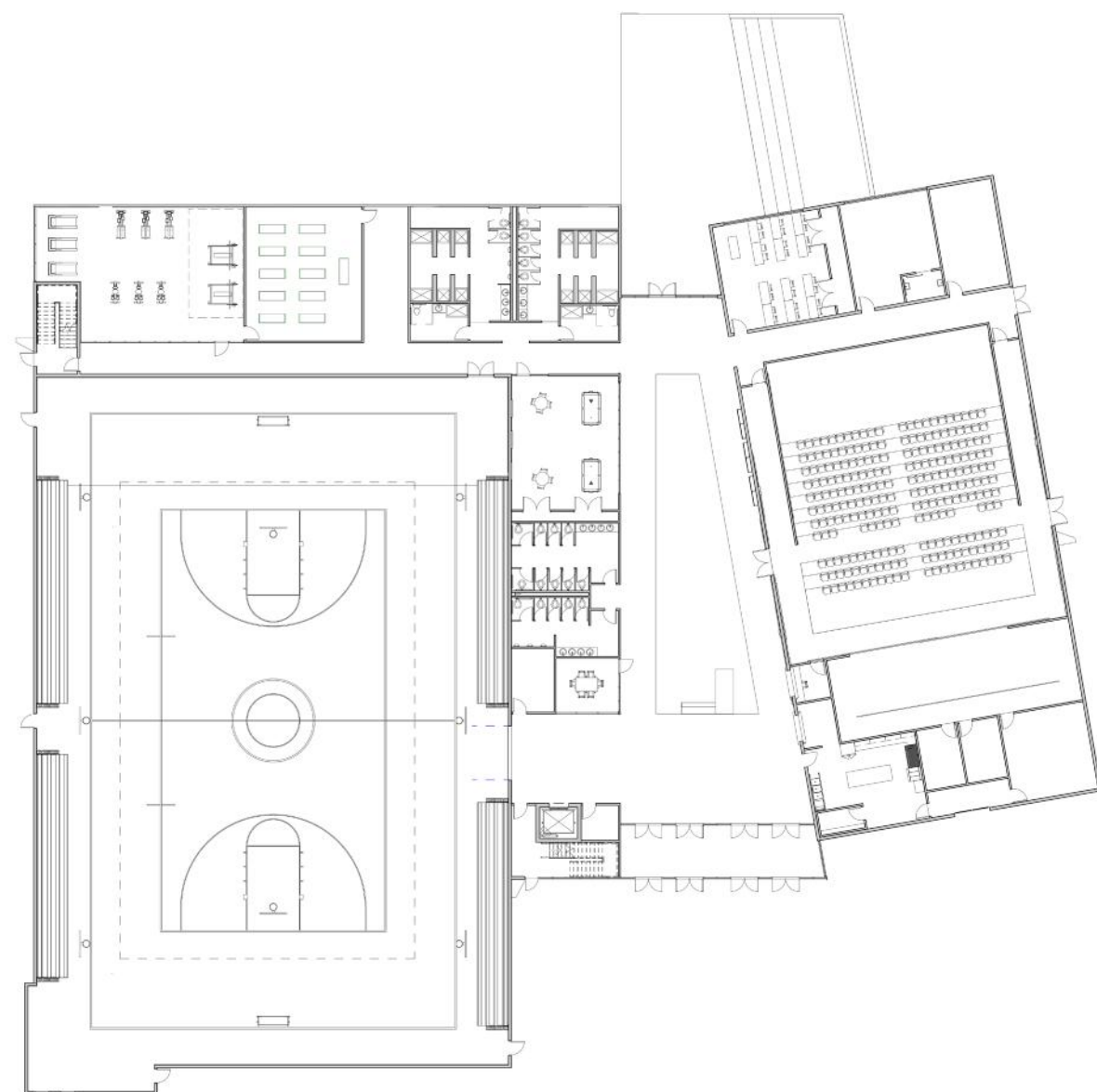
Option 1: Delete Pool Building

Savings: \$8,500,000

New Total project cost: \$36,225,455



STARCK
ARCHITECTS



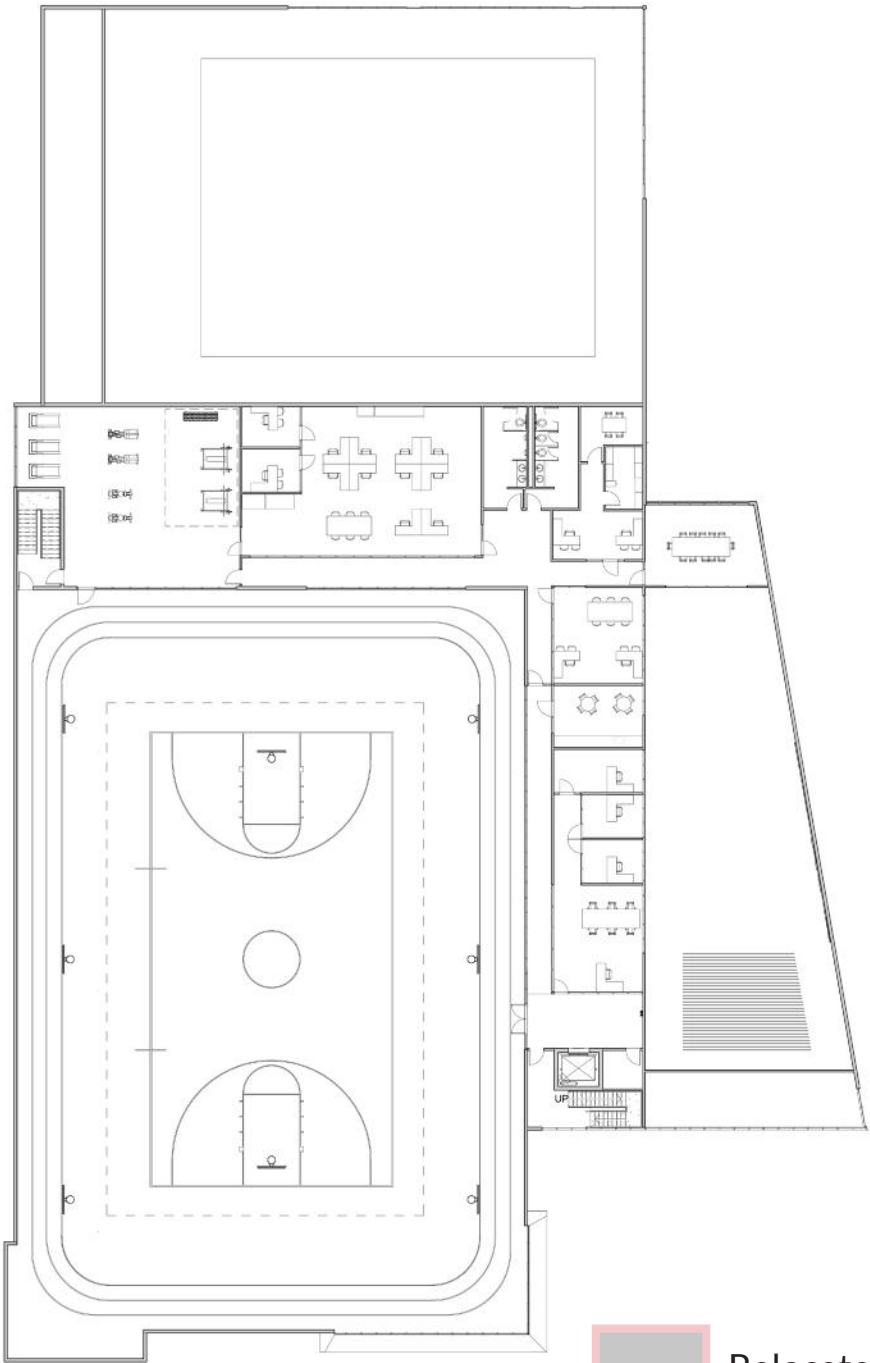
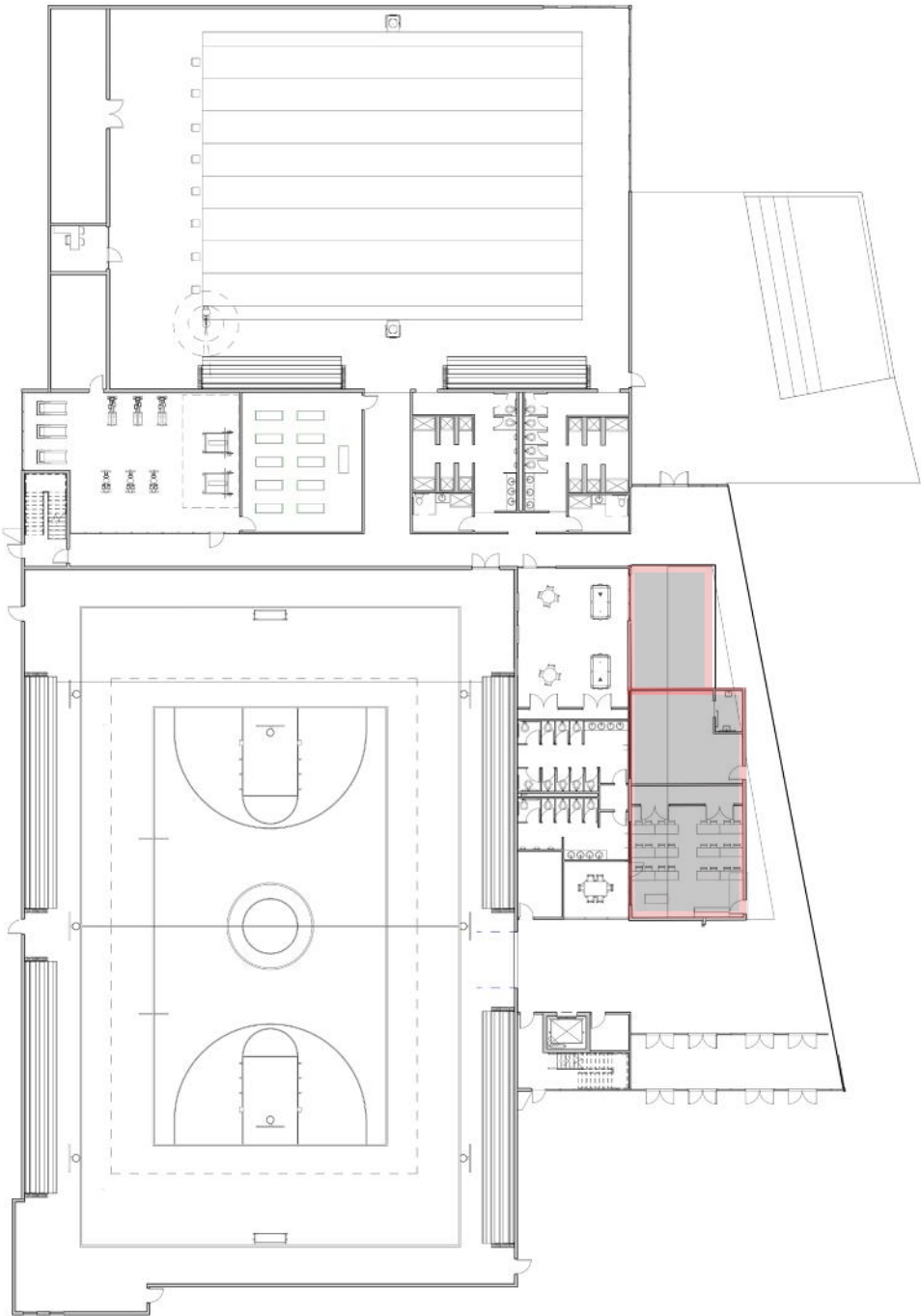
Option 2b: Delete auditorium

Savings: \$7,050,000

New Total project cost: \$37,675,455



STARCK
ARCHITECTS



Relocated Childcare, Training
Room and Utility Space

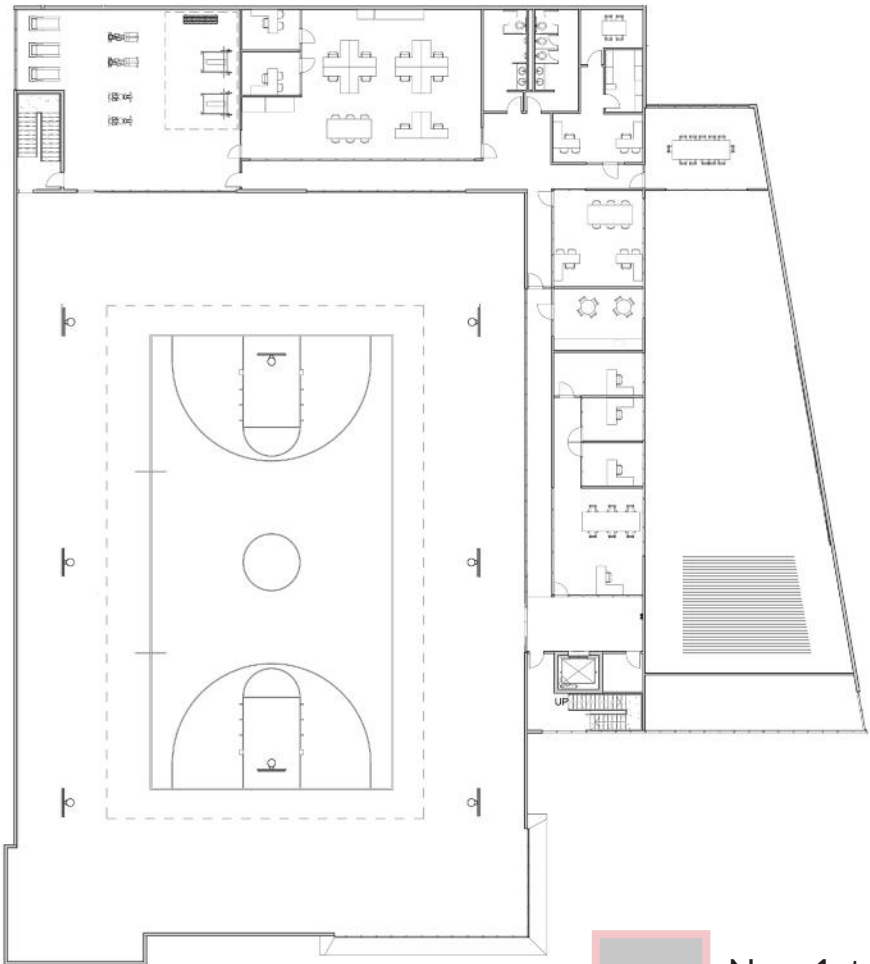
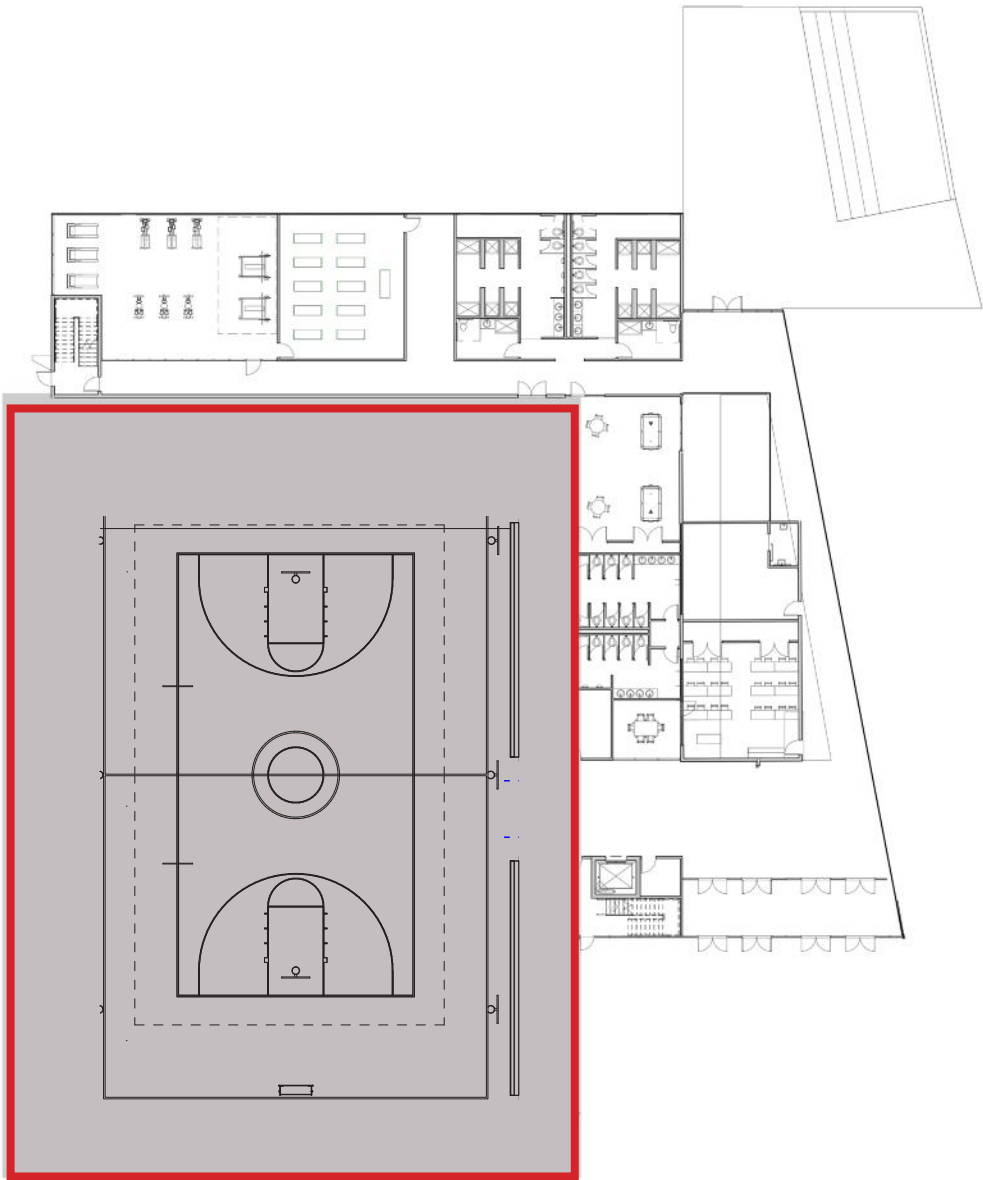
Option 3b: Delete walking track and expand first floor to include ground level walking track

Savings: \$550,000 Cost: \$2,800,000

New Total project cost: \$31,425,455



STARCK
ARCHITECTS

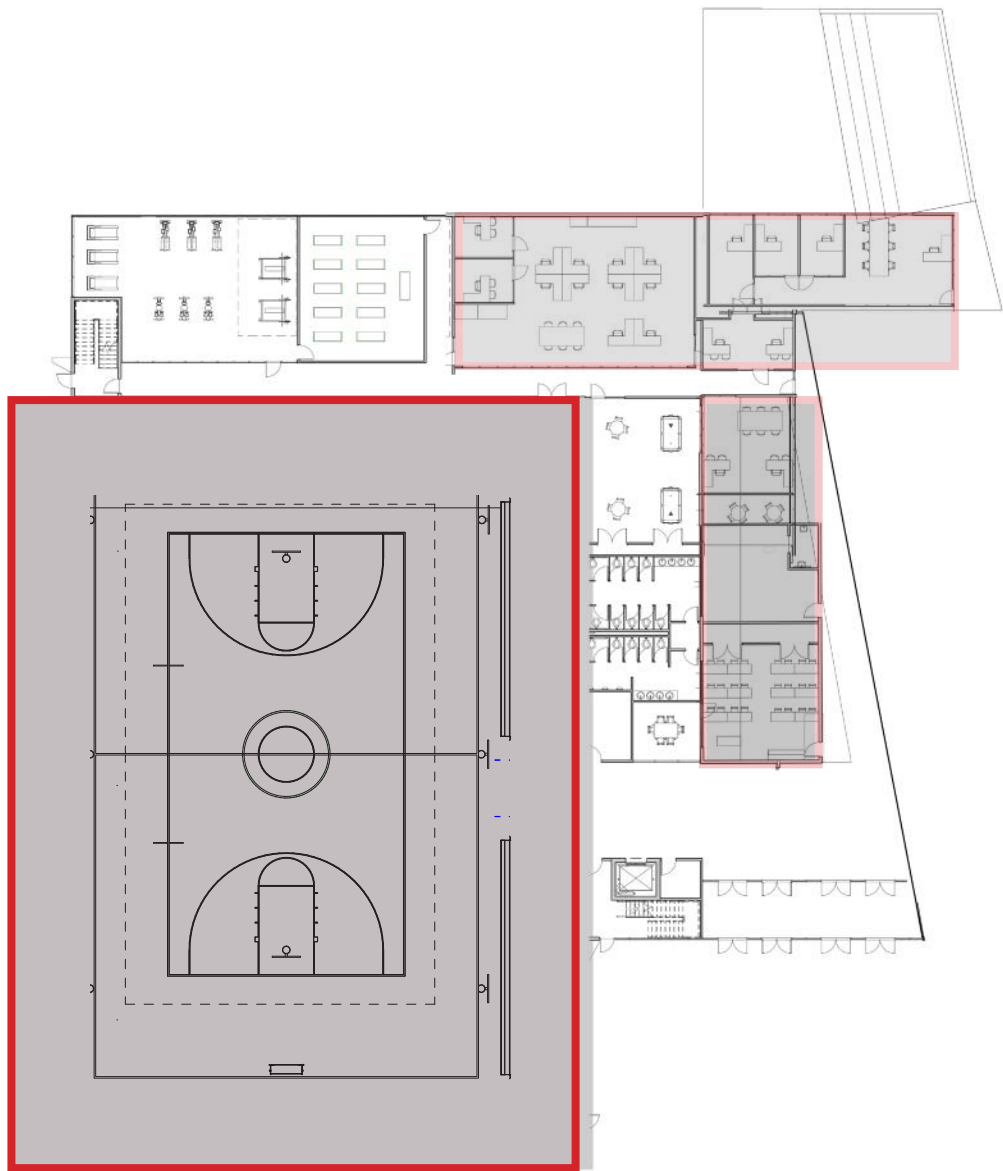


New 1st Floor Walking Track

Option 4c: Delete 1st floor shower rooms and entirety of 2nd floor

Savings: \$6,555,000

New Total project cost: \$24,870,455





Relocated Second Floor Program