



Phase 1 Fact Sheet:  
 Military Munitions Response Program  
 Remedial Action  
 For Rumford Rifle Range Munitions Response Site  
 Rumford, East Providence, Rhode Island

3 June 2022

**Introduction**

The Army National Guard Directorate (ARNG), Rhode Island Army National Guard (RIARNG), and U.S. Army Corps of Engineers (USACE) are conducting a remedial action at the Rumford Rifle Range Munitions Response Site (MRS). The MRS is located in the town of Rumford, a subdivision of the City of East Providence in Providence County, Rhode Island.

Portions of the 7.22-non-contiguous acre MRS lie within the city-owned Kimberly Ann Rock Memorial Athletic Complex, other city- and town-owned properties, and commercial and residential properties. The MRS is located in a mostly wooded area, adjacent to a large pond named Central Pond and several other small water bodies. The Ten Mile River Greenway runs north from the athletic complex and extends into Pawtucket, Rhode Island, outside the MRS boundary.

Rumford Rifle Range opened in 1896 and was used by the Rhode Island Army National Guard and other U.S. Department of Defense organizations. The rifle range was leased from 1896 until 1922 when the state purchased the property. Due to safety concerns related to the encroaching residential properties, the range was closed in 1946.

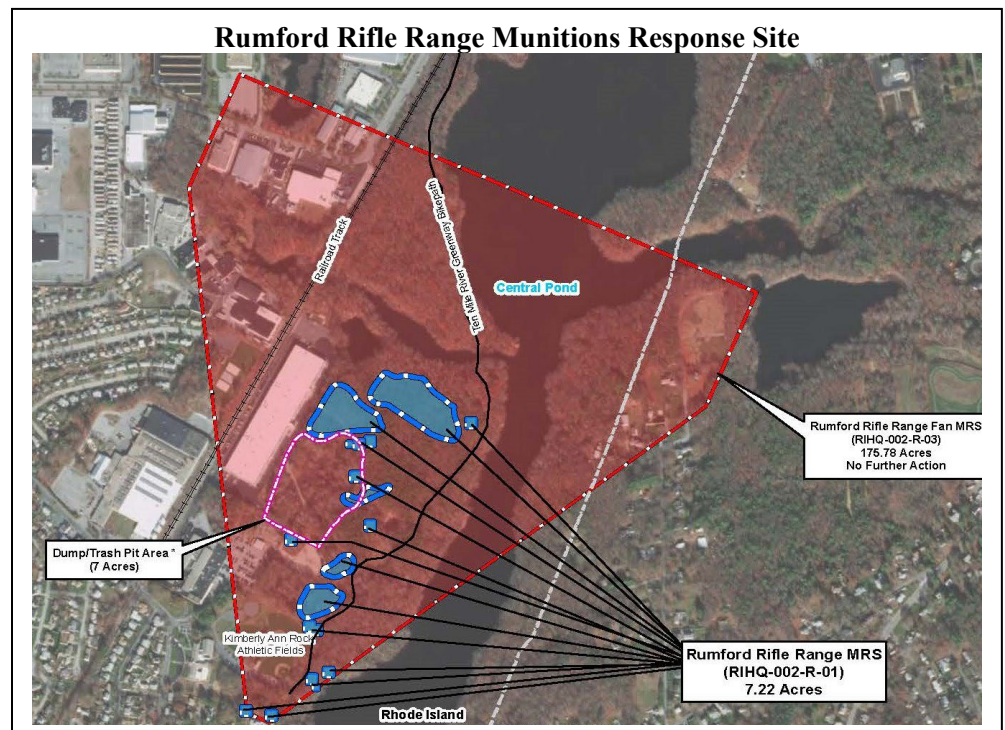
Numerous state rifle competitions were held at the range. Potential munitions used were small arms (.22, .30, .38, .45, and .50 caliber). The range consisted of 200-, 300-, 500-, 600-, 800-, and 1,000-yard target locations.

**Recent Studies Conducted at Rumford Rifle Range MRS**

A site inspection was completed in 2012 during which range features and elevated munitions constituents concentrations were identified in a 183-acre range area. A Remedial Investigation was conducted in 2018 and lead-contaminated soils were identified within 19 separate non-contiguous areas that comprise a total of 7.22-acres. No munitions and explosives of concern or munitions debris were

identified during the Remedial Investigation. In 2019, a feasibility study was prepared and presented the evaluation of three remedial alternatives. The public had the opportunity to comment on the proposed remedial alternative for Rumford Rifle Range Fan MRS (RIHQ-002-R-03) (Alternative 1 – No Action) and Rumford Rifle Range MRS (RIHQ-002-R-01) (Alternative 3 – Munitions Constituents [MC] Soil Removal to Various Depths across 7.22 Non-Contiguous Acres with No Land Use Controls [LUCs]). The record of decision documented that a remedial action is necessary to reduce the risk associated with the MC to human health and the environment based on the current and intended future land use of the site. The record of decision for the site was signed on January 16, 2020.

This fact sheet provides a summary of the remedial design. The technical documents on which this fact sheet was prepared is the Remedial Design/Remedial Action Uniform Federal Policy Quality Assurance Project Plan.



**MRS Remedial Action Approach**

During the Remedial Investigation, contamination was determined to be present due to metals (i.e., lead) in soil that presents potential risk to human receptors who may come into direct contact with contaminated surface or subsurface soil. The soil also contains leachable lead at a level that meets the definitions of a hazardous waste.

The hazards include lead in soils above the Rhode Island Department of Environmental Management standards that do not allow for unlimited use and unrestricted exposure. It is expected that land use for the MRS as open recreational with portions designated for commercial and residential will remain the same. After the alternatives were evaluated in a feasibility study, a remedy was selected and presented to the public in a Proposed Plan, and the final selected remedy was documented in a Record of Decision. It was determined by ARNG, RI ARNG, USACE, and other stakeholders that hazards associated with lead can be reduced through soil removal.

The Remedial Action will be completed in two Phases as outlined in the following sections.

## Phase 1 On-Site Technical Approach

All work conducted by the Army National Guard on this MRS is being performed in accordance with the Comprehensive Environmental Response, Compensation, and Liability Act (CERCLA), as amended by the Superfund Amendments and Reauthorization Act (SARA) (together known as Superfund), and the National Contingency Plan (NCP). A Uniform Federal Policy – Quality Assurance Project Plan was prepared to present the technical approach for the overall framework of the remedial design/remedial action activities to meet the remedy selected in the Record of Decision. The Phase 1 site activities will involve the following:

**Mobilization** - Includes field staff, equipment, and consumable materials to the site; setup, maintenance, and testing of equipment and facilities; familiarizing project personnel with the site; and safety requirements.

**Surveying** – Surveying equipment for marking and surveying excavation areas may include base stations, survey stakes, and survey personnel who will be on site periodically for the duration of the project.

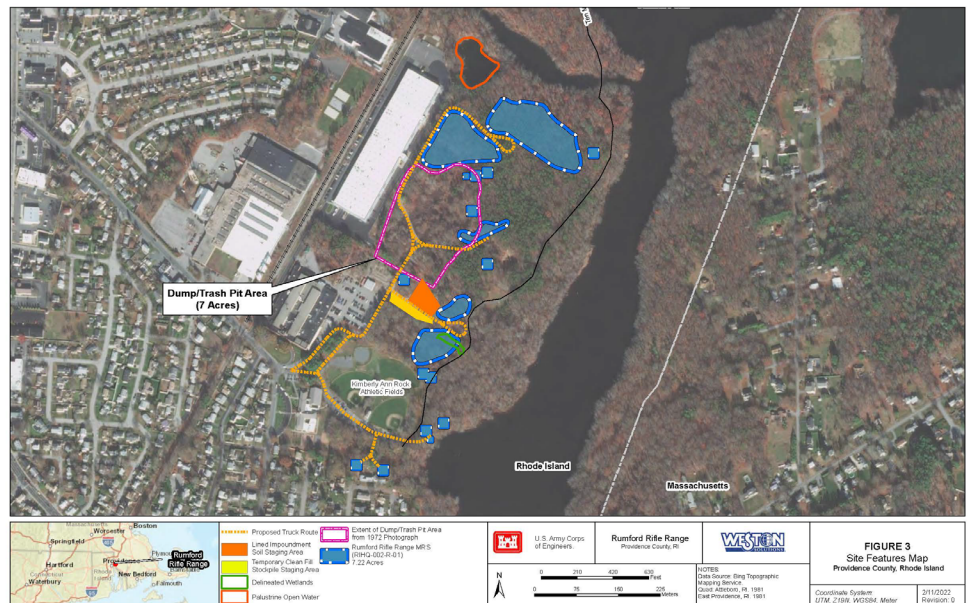
**Erosion and Sediment Controls and Perimeter Fencing** – Installation of soil erosion control requirements and perimeter temporary fencing with signs. Erosion control devices and temporary fencing will be constructed around each excavation area to control any precipitation runoff water, notify the public that it is a restricted area, and to restrict wildlife access to those areas.

**Vegetation Clearing** – Vegetation and tree removal will be conducted only where necessary to ensure safety of personnel and to prepare areas containing contaminated soil for excavation.

**Haul Road Construction** – Existing roads will be improved where necessary, pruned of vegetation, and made ready for construction vehicles. A separate entrance for trucks and equipment will be constructed adjacent to the northern ballfield parking lot to ensure parking for park patrons is maintained and to allow easier access for larger vehicles.

**Traffic Control** – Temporary traffic control measures will be established leading to and on site to ensure workers, truckers, and visitors recognize the entrance as belonging to an active construction site/work zone. The proposed parking area for the Command Post trailer is off the entrance to the Kimberly Ann Rock Athletic Fields and will be clearly marked. Overflow parking will be adjacent to the Interplex entrance road. Trucks and construction vehicles will access the site using the northern portion of Ferris Avenue to avoid residential areas, and traffic will be coordinated with the Wolf School to avoid disruptions to school traffic.

**Phase 2 Activities** – the Phase 1 Fact Sheet provides a summary of site activities prior to the planned excavation of lead-contaminated soil. A summary of site activities related to sampling and analysis of excavated soil and post-excitation soil, transportation and disposal of excavated soil, and site restoration will be included in a separate Phase 2 Fact Sheet.



## Project Information Repositories

All documents prepared for the Rumford Rifle Range MRS will be available to the public at the following locations:

Rhode Island Army National Guard  
2841 South County Trail  
East Greenwich, Rhode Island 02818

Weaver Library  
41 Grove Avenue  
East Providence, Rhode Island 02914

### For More Information

For more information regarding the Rumford Rifle Range MRS and remedial action process please contact:

John Haines  
Army National Guard Directorate  
111 South George Mason Drive  
Arlington, VA 22204-3231  
(703) 607-7986  
john.b.haines.ctr@army.mil